

Project:
Proposed alterations to Old Farm, Ivy Lane, Great Brickhill,
Milton Keynes. MK17 9AH

Drawing Title:
**Dormer windows & family
bathroom window**

Scale 1: 200 @ A3 paper size
1: 100 @ A1 paper size

Date August 2023
Drawn by MD

Drawing No:
1110/20
Rev.A

Michael Dolan Associates Architects
36 Cedar Crescent Thame Oxon.OX9 2AU

mail@michaeldolan.co.uk
tel: (01844) 217557

Elevations as existing



north 1 : 100



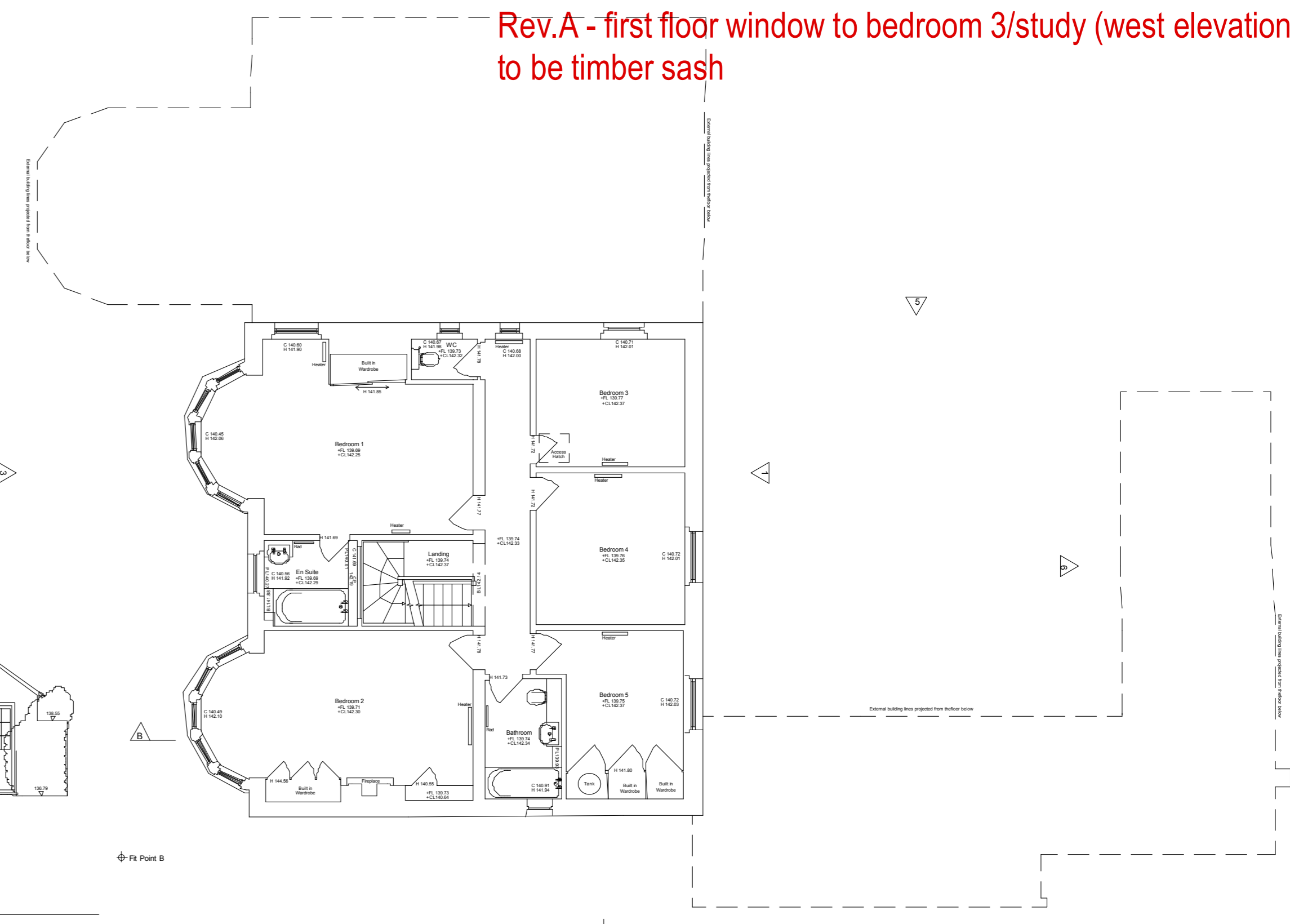
west 1 : 100



east 1 : 100



south 1 : 100

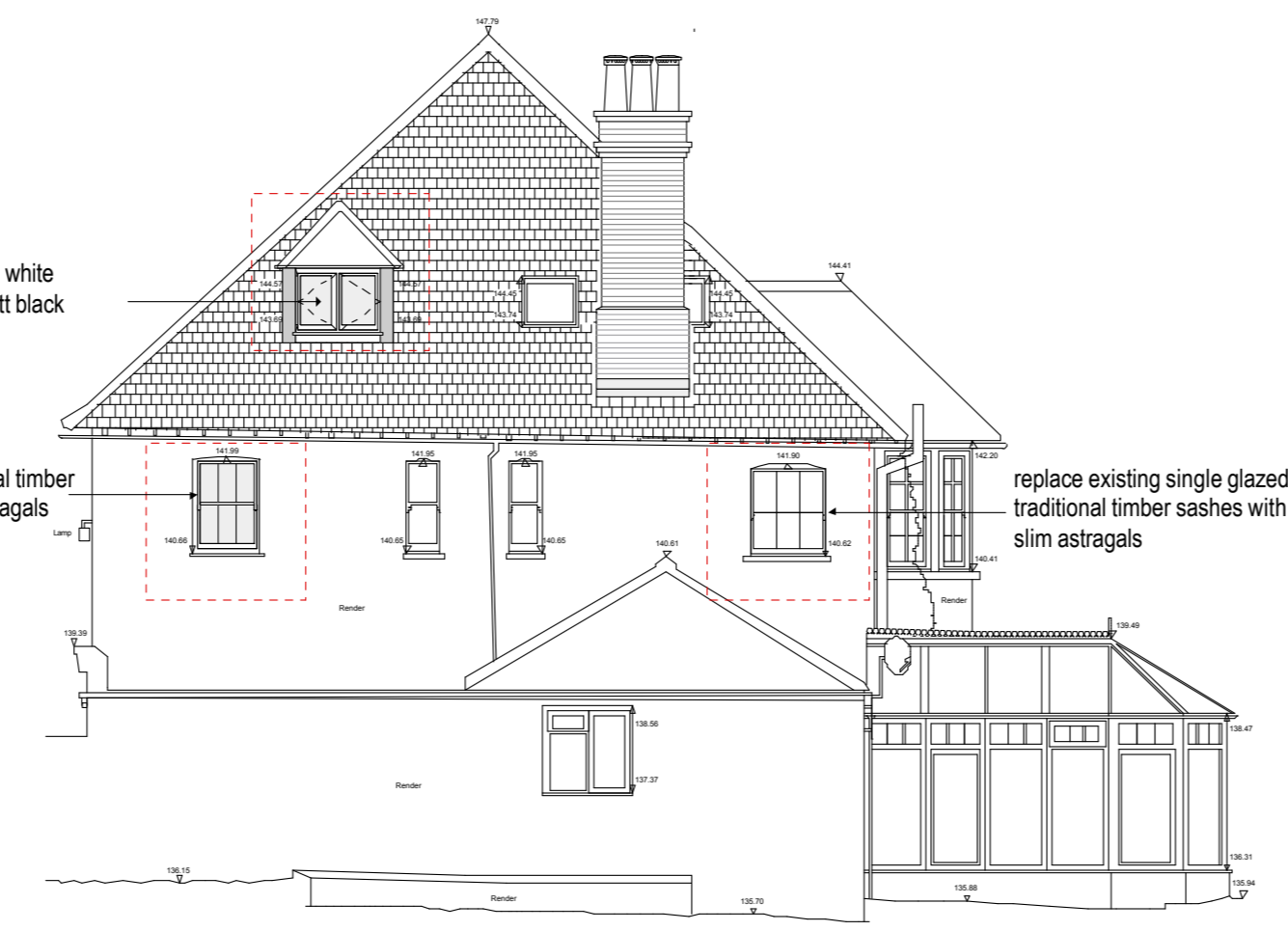


existing first floor plan 1 : 100

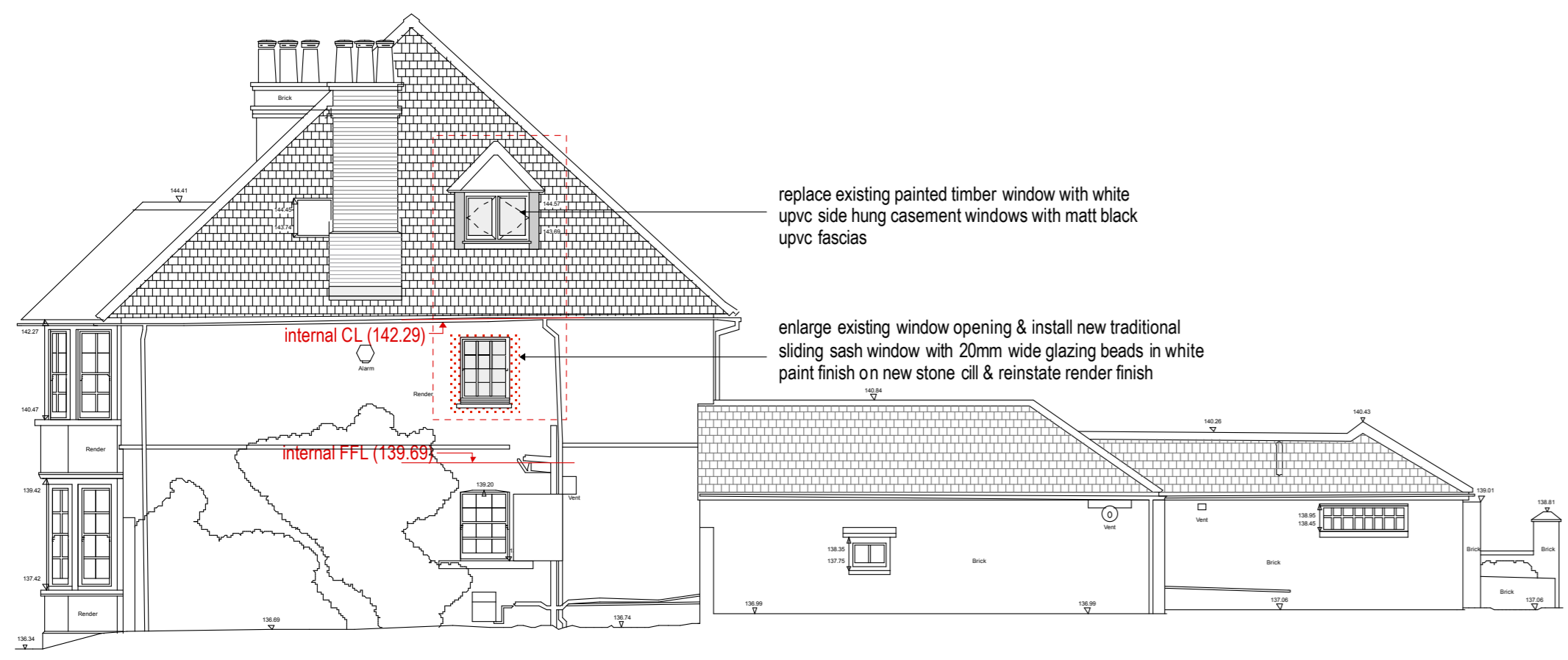
Elevations as proposed



north 1 : 100



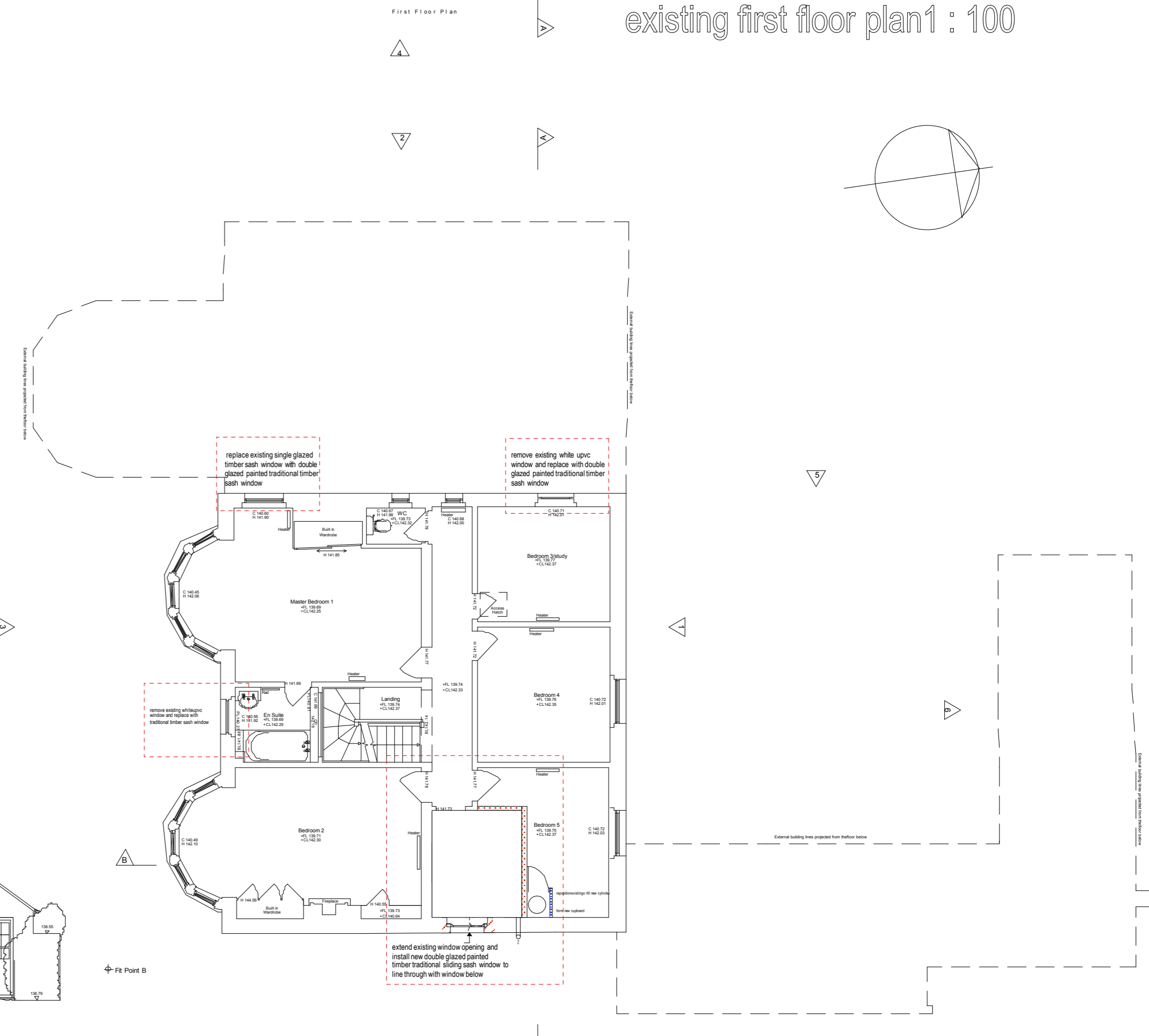
west 1 : 100



east 1 : 100



south 1 : 100



proposed first floor plan 1 : 100

replace existing painted timber window with white upvc side hung casement windows with matt black upvc fascias

replace existing upvc window with traditional timber sashes with double glazed units & slim astragals

replace existing single glazed timber window with traditional timber sashes with double glazed units & slim astragals

replace existing painted timber window with white upvc side hung casement windows with matt black upvc fascias

enlarge existing window opening & install new traditional sliding sash window with 20mm wide glazing beads in white paint finish on new stone cill & reinstate render finish

replace existing upvc window with traditional timber sashes with double glazed units & slim astragals

replace existing single glazed timber sash window with double glazed painted traditional timber sash window

remove existing white upvc window and replace with double glazed painted traditional timber sash window

extend existing window opening and install new double glazed painted timber traditional sliding sash window to line through with window below

internal CL (142.29)

internal FFL (139.89)