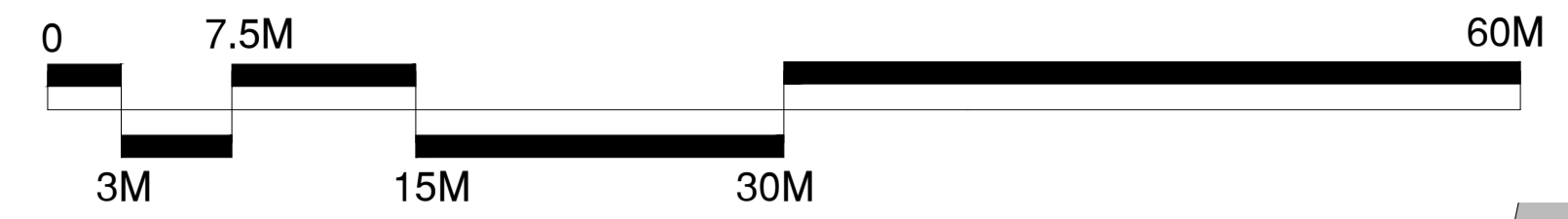


Queen Elizabeth Grammar School

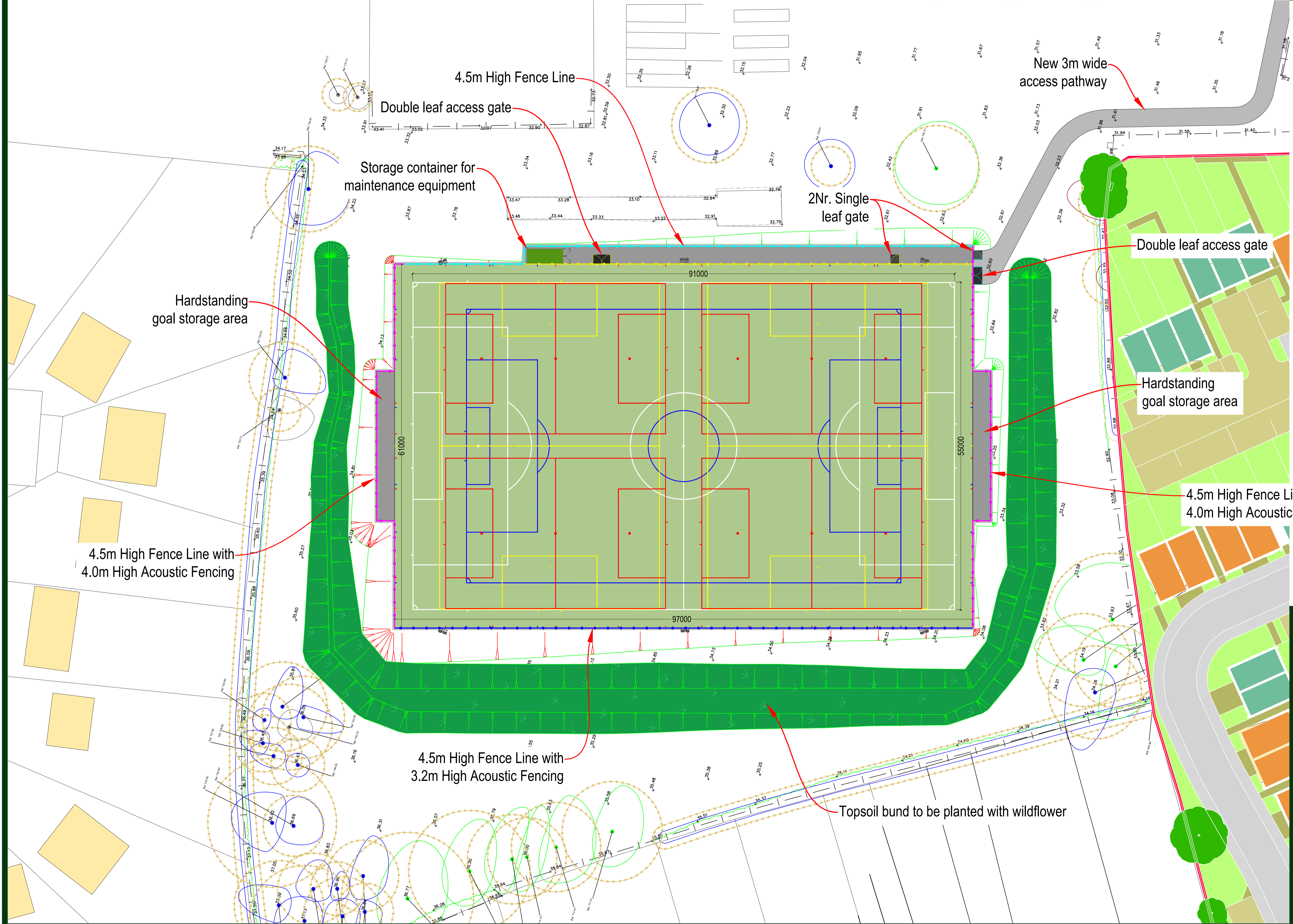
Creation of an AGP



SSL
SURFACING SOLUTIONS LTD
Office: 2, Longwalk House,
Waltham Road, Coptham, LE15 9WY
01535 400 013

CONSULTANTS
SURFACING SOLUTIONS LTD
Office: 2, Longwalk House,
Waltham Road, Coptham, LE15 9WY
01535 400 013

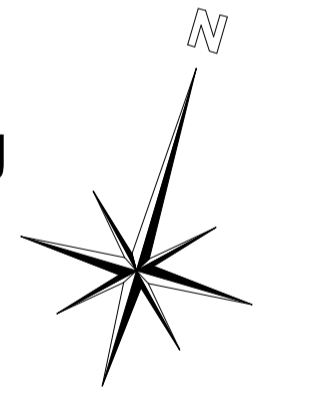
1. ALL DIMENSIONS TO BE CHECKED ON SITE PRIOR TO COMMENCEMENT OF WORKS.
2. THIS DRAWING IS COPYRIGHT TO SURFACING SOLUTIONS LTD.
3. ALL PERSONNEL SHOULD BE AWARE OF THE HEALTH AND SAFETY PLAN WHICH IS RETAINED IN THE SITE MANAGERS OFFICE.



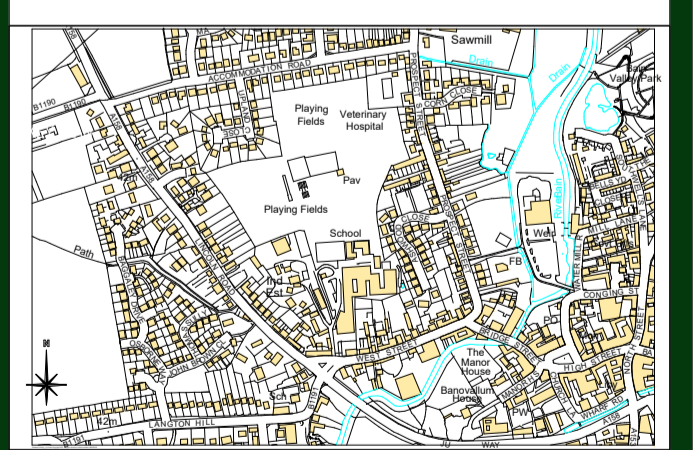
- Artificial Turf Playing Area
- Footpaths & Hard Standing Areas
- 4.5m High Fence Line
- 4.5m High Fence Line with 3.2m High Acoustic Fencing
- 4.5m High Fence Line with 4.0m High Acoustic Fencing
- 1.2m High Fence Line

Notes:
Line markings to accommodate:
1Nr. 11v11 91x55m (white)
1Nr. 9v9 73x46m (blue)
2Nr. 7v7 54.8x37m* (yellow)
4Nr. 5v5 37x25.32m* (red)

*Smaller than recommended size but acceptable for FA match play



| | | | | |
|-----|----------------|-----|----|----------|
| 00 | PLANNING ISSUE | ME | WB | 30.08.23 |
| REV | DESCRIPTION | REV | CK | DATE |



AUTHOR
ME

TITLE
Queen Elizabeth Grammar School
Creation of an AGP
Proposed AGP Plan

| | | |
|------------|----------|------|
| PROJECT | SCALE | SIZE |
| SC104 | 1:300 | A1 |
| DRAWING NO | REVISION | |
| 04 | 00 | |