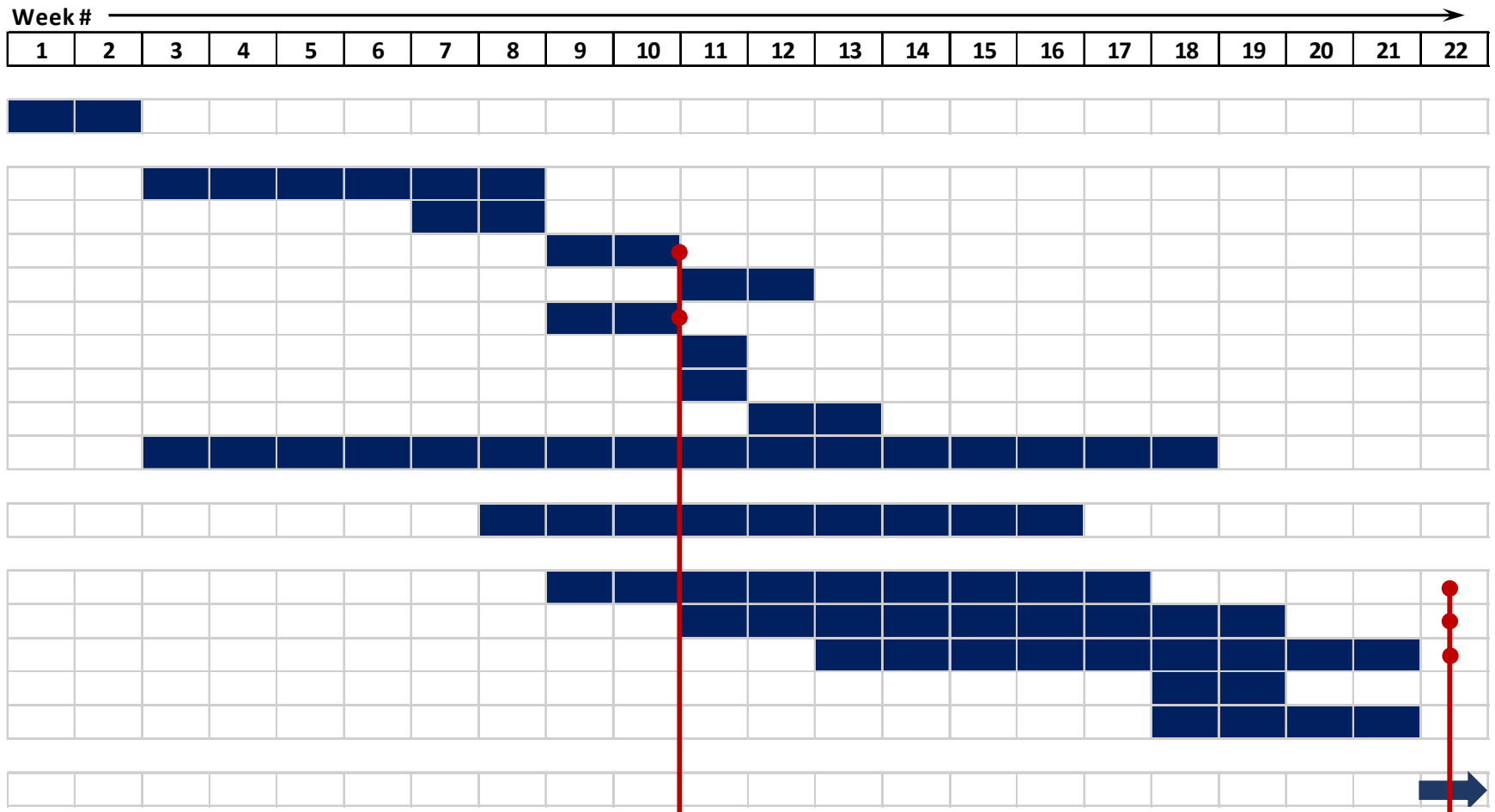


Fennings Farm Poultry Site Development Phase Plan

Fennings Farm Poultry Site Development Phase Plan



Notes

- Reservoir construction to be prioritised following completion of archaeological works (pre commencement condition).
- Existing site drainage & bore water to be utilised to begin filling reservoir as soon as possible to ensure adequate supply for first flock.
- Development to be in two phases with three sheds completed in Phase 1 and three sheds to follow at a later date (as soon as practically possible).

← 12 weeks →

Reservoir filling commences. See next page for calculations of water levels.

Birds place in H1-3 only. Development of H4-6 to follow as Phase 2 of development

Fennings Farm Poultry Site

Reservoir Levels

- The below graph shows the water collected in the reservoir from the date the reservoir begins filling (week 11) through the next 100 weeks
- The calculations used are the same as those agreed by Essex & Suffolk Water in February 2023.
- Based on rainfall levels over the past 10 years, the reservoir will ultimately reach capacity (16,000m³) in year 2 of operation (assuming excess capacity is not utilised on existing sheds).
- Based on 1921 drought rainfall levels, the reservoir levels are significantly lower but still increase over time.
- Calculations assume rainwater flows from new house roofs are only captured once birds are stocked (conservative assumption) – H1-3 in Week 22 and H4-6 in Week 44.

