

WELCOME TO
A WORLD
OF POSSIBILITIES



Lacuna[®]
Made in Denmark

“We don’t just make bi-folding doors,
we create quality of living”

- Henrik Brunsø
CEO

In this brochure, we focus on design options in the models:

Lacuna CLASSIC®

The classic outward folding door, with optional glazing bars in numerous shapes. Uw value down to 0.85.

Lacuna PRIMETIME®

Outward folding door with optimum insulation. Uw value down to 0.75.

Lacuna URBAN®

Inward folding door. Uw value down to 0.75.

Lacuna ARCTIC®

Outward folding door. Uw value down to 0.6.

Lacuna also manufacture:

Lacuna FIXED®

Fixed frames designed as a folding door, however, without ironmongery. Measuring up to 6 x 2.8 m (frames in a frame), they are assembled on site and so, like any other Lacuna products, can be installed by two persons, without crane assistance. Uw value down to 0.75.

Lacuna TERRAZZO®

Outwards- and inwards opening single and double doors, for whenever you require a design match for your folding doors. Uw values down to 0.75.





OPEN UP YOUR HOUSE AND EXPERIENCE NATURE BOTH INSIDE AND OUT

At Lacuna, we believe that creating a home should be defined by possibilities and not restrictions. Our vision is to set the stage for a life of well-being, comfort and good times, both on the inside and outside.

We want to be the best at what we do, focusing on quality, innovation and design. A folding door is more than just a folding door. We customise all our products to your individual wishes, so they match the doors and windows of your home.

Lacuna doors are the new way to access your terrace, garden or balcony, featuring wide openings to the outside and fantastic design flexibility.

Driven by our ambition to make the world's best folding doors, we are focused on safety, design and quality with a product lifetime expectancy of 30 to 50 years.



LACUNA URBAN® QUALITY OF LIFE AT YOUR BALCONY

An inward opening folding door is ideal if you have a small balcony or Juliet balcony. With an inward folding door, you get a large opening to your balcony, without the door taking up the space on the balcony. In this way you get the most out of your outdoor area and at the same time nature and the balcony blends in with the kitchen, family room or living room, so the whole apartment and balcony become much larger. URBAN® has been airtightness tested at the Danish Technological Institute to more than hurricane strength (1,200 Pa).



URBAN® is also available in an option (Lacuna URBAN® French) with integrated glass balustrade for Juliet balconies.



QUALITY AND DESIGN INSIDE AND OUT

After almost 15 years in the market, Lacuna is known for its unique design and exceptional quality. This reflects everyone at Lacuna's drive to be the best in the world at creating this one product.

We believe that our devotion to folding doors should match the love and passion people invest in their homes.

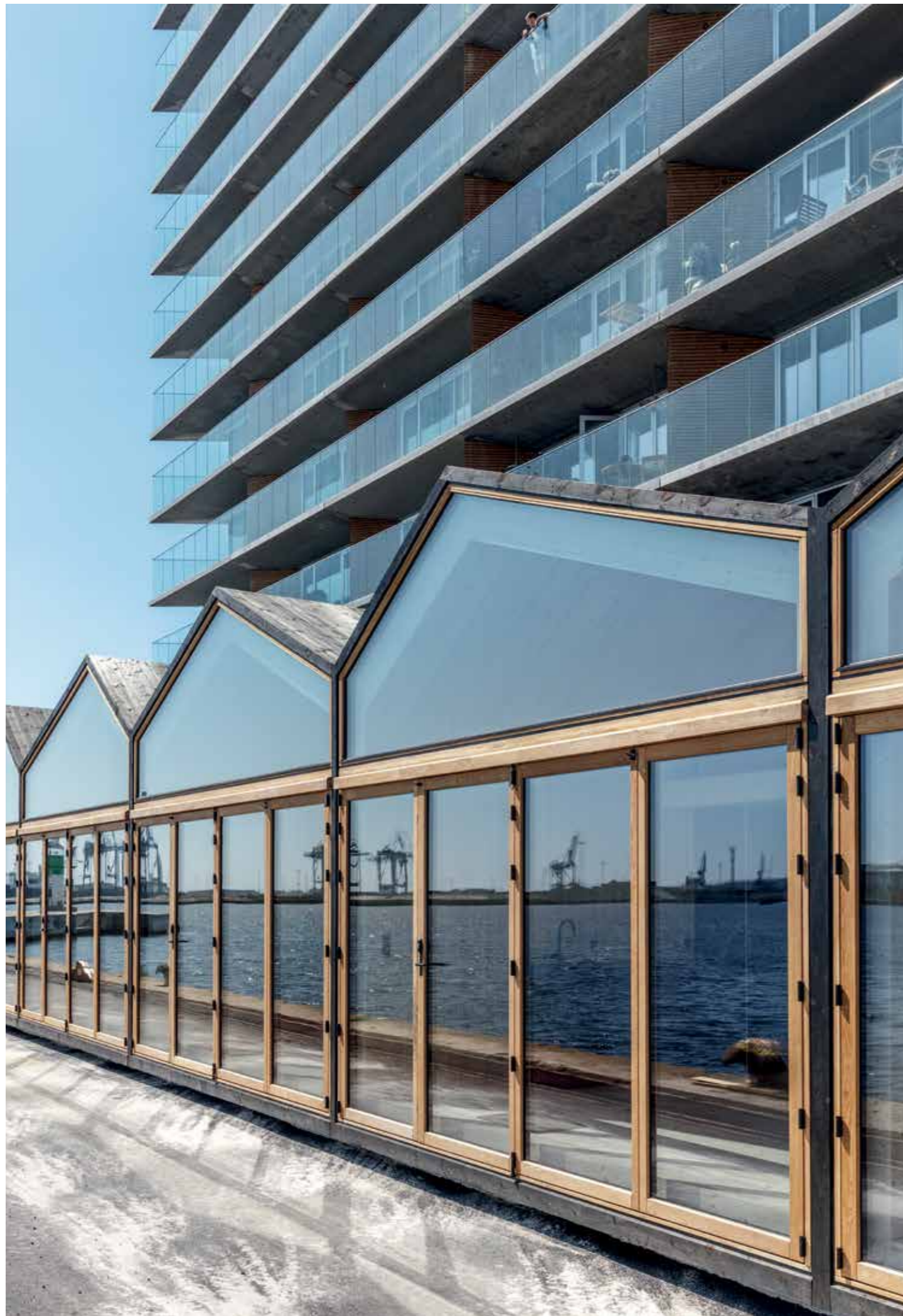
IMAGINE THE POSSIBILITIES

Imagine you had the option to connect your living room to your terrace within just a few minutes? What if you could transform your kitchen into an open-air kitchen with just a simple set of moves? And what if you could watch the game on TV from your back yard, without having to move anything other than your feet?

Possibilities are exactly what you get when you choose a folding door from Lacuna. Our exclusive use of natural or modified hardwood, handcrafted hinges and double or triple sealing to ensure stability and a high level of insulation. Our solutions offer you new ways to open your home.

Are you interested in opening your cosy cottage to the surrounding nature, or expanding the horizons in your penthouse flat? Lacuna folding doors make it possible to be at once both indoors and out.





A FOCUS ON SUSTAINABILITY

With respect to dimensional stability and longevity, Lacuna works exclusively with hardwoods. We use Northern German beech wood, which is subsequently heat-treated in Denmark so that the durability becomes like teak. At the Lacuna factory on Funen, we laminate the timber for the finished product, which provides the unique properties required of a folding door. Other timbers include German oak and Sapelli mahogany. All timber is certified FSC or equivalent.

To document our green efforts and requirements for future sustainable building (DGNB or BREEAM), an EPD (Environmental Product Declaration) has been prepared for the Lacuna folding doors. The EPD is a detailed environmental declaration and product description, which also maps energy consumption, resources and waste recycling in the folding door's life cycle.

It is part of the Lacuna DNA to naturally include climate and sustainability in everything we do, without compromising quality, longevity and minimal maintenance requirements.





**YOUR
FOLDING DOORS
DESIGNED TO
MATCH YOUR DREAMS**

Lacuna folding doors are custom made for each individual home and project and aimed to meet your requirements. Flexibility is a key feature of our folding doors. They can be customised to match different designs, styles and architectural elements of doors and windows in any home.

There are endless possibilities and combinations when it comes to width, height, frame types, indoor and outdoor colours, handles, glazing bars, horizontal mullions, etc. Integrating a window into your folding doors is now also an option.

DANISH DESIGN OF HIGHEST QUALITY AT A REASONABLE PRICE

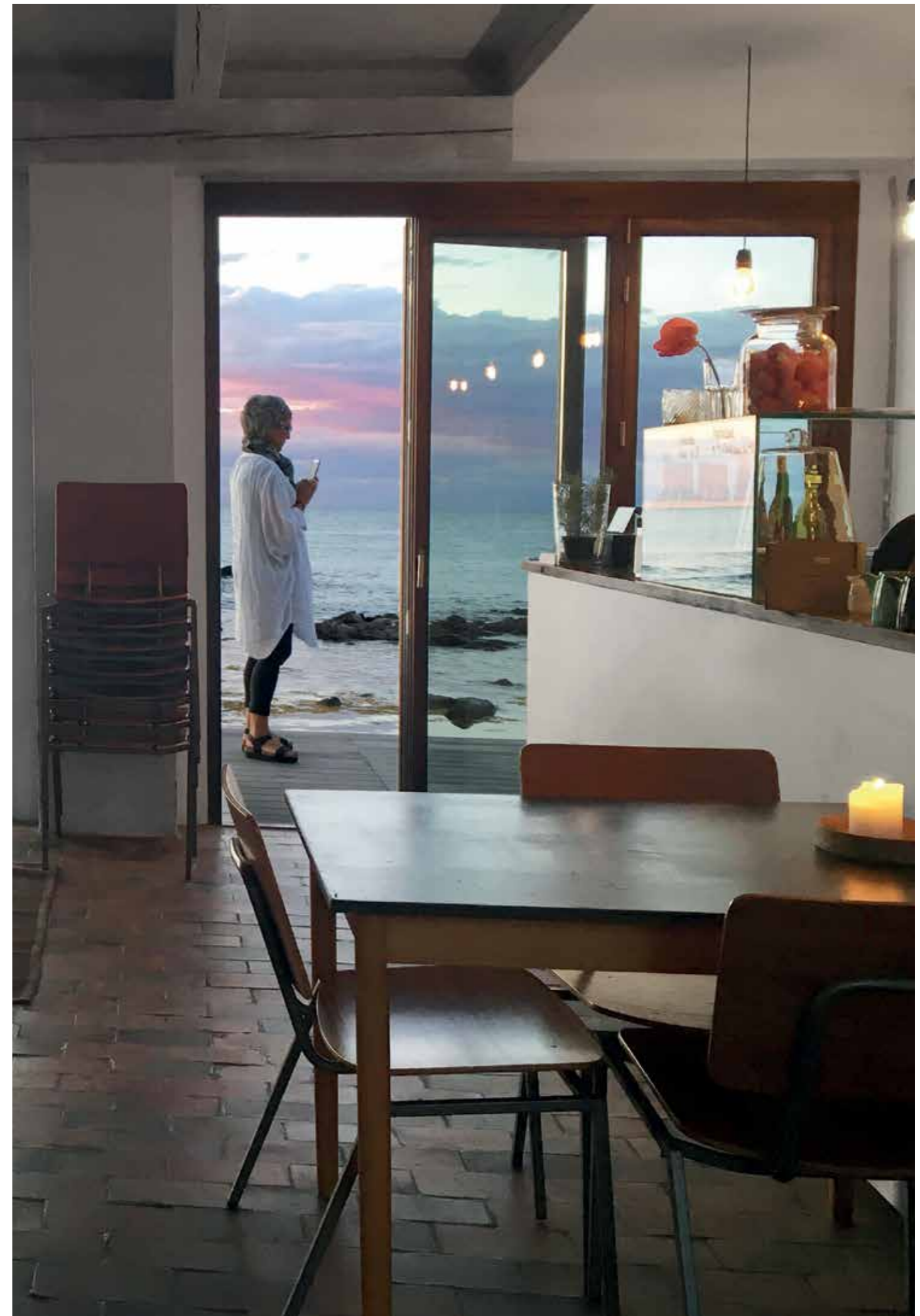
All Lacuna products are designed and manufactured in our factory in Denmark, where we combine Danish design and quality. Lacuna folding doors are certified as the tightest and most well insulated in the world. The Danish Technological Institute (DTI) has tested our products with regards to extreme weather, insulation and security, to give our customers peace of mind during extreme wind and weather conditions.

Beyond complying with international standard tests, Lacuna also performs its own extreme tests on moisture absorption, dimensional stability and insulation of the folding doors. We also have our products tested by third parties in order to ensure full transparency regarding their performance. We are therefore very proud to be able to call Lacuna folding doors the tightest in the world.

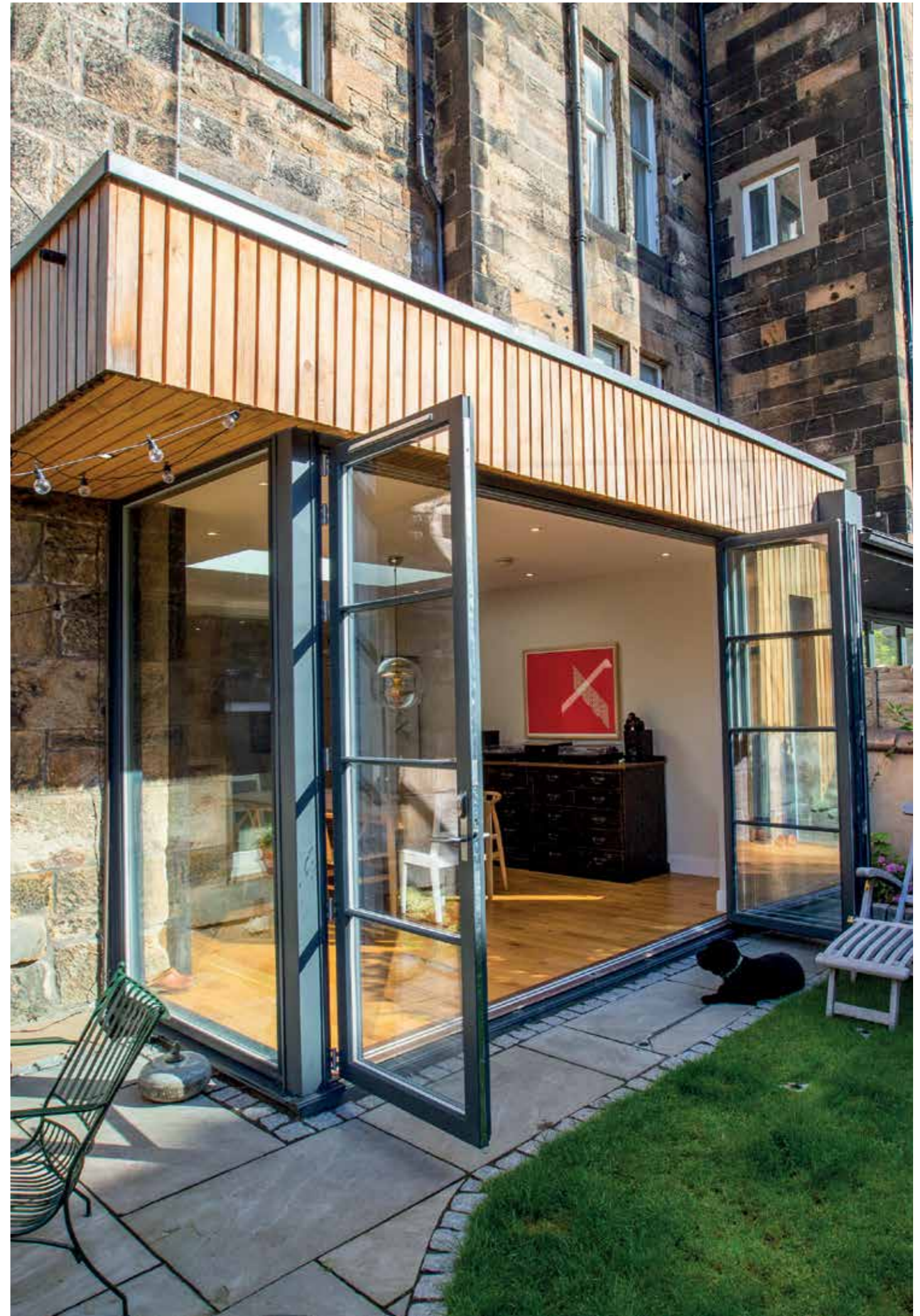
Lacuna folding doors are designed with double or triple sealing and are certified in accordance with C3 requirements for burglary protection. Lacuna folding doors meet the highest requirements, including the British PAS 24 standard and RC2N.

The folding doors are designed to work in temperatures ranging from -50 °C up to +60 °C, and their resistance has been tested for hurricane conditions with wind speeds of up to 280 km/h.

You can find documentation for the tests on our website: www.LacunaOfDenmark.com.



LOCAL INSPIRATION



LOCAL
INSPIRATION



IT'S ALL IN THE DETAILS



ENVIRONMENTALLY FRIENDLY WOOD

TMT Composite® (Thermally Modified Timber) is the concept of Lacuna's advanced heat-treatment, which we use on beech for painted bi-folding doors. No chemicals whatsoever, only heat, is used in the treatment.

Through the TMT® process the timber obtains durability class 1, like teak, and a humidity of about 5.5%, making the modified timber very suitable for folding doors, as dimensional stability is extremely important for an airtight product that should not need adjustment due to changing weather conditions (moisture/draught).

At the same time TMT Composite® has a much better insulation as the treated wood does not absorb humidity as untreated wood would, resulting in bi-folding door that will last for many years.

A sustainable process for sustainable construction.

European oak and FSC-certified Sapelli mahogany are alternatives, either oiled or painted with transparent coating. Pine and other soft woods are not used due to their lack of dimensional stability.

SAFETY AND DESIGN

Our customers don't need to worry about being burgled. Lacuna folding doors are suspended from the top frame, have locks on all the doors, and work without a rail in the bottom frame, which is known to gather snow, ice and dirt. The glass is fitted from the inside and fully glued from both sides, so that a potential burglar cannot get in even if the doors are damaged.



HINGES, HANDLES AND BRACKETS

One thing that all Lacuna products have in common is that all hinges, handles and fittings are manufactured in acid-proof stainless steel that guarantees a durable and timeless design. These are also available powder coated in black or white. Special colours can be supplied.



STRONGER BOTTOM FRAME

In our continuing efforts to make the world's best folding door, we are constantly developing our products. For instance, Lacuna has upgraded the threshold to fibreglass so that it has become maintenance-free on the outside. Internally, the visible part of the bottom frame will still be wood. The reinforced fibreglass frame is available for both inward and outward folding doors.



A GREEN AND SUSTAINABLE FUTURE

Here at Lacuna, we care about the environment. Insulation is therefore an essential factor to ensure a green and sustainable future. You can build a low-energy home, save on heating costs and reduce your CO2 impact when choosing Lacuna folding doors.

The insulation capacity of our doors is considerably above standard. Insulation is measured in U_w , a lower number indicating better insulation. A normal double-glazed, energy-saving window has a U_w value of between 1.0 and 1.5. Equipped with comparable glass, our products have U_w values going down to below U_w 0.6 (model Lacuna ARCTIC®).

*Find more technical details and further information about folding doors on our website.



EASY ASSEMBLY QUICK INSTALLATION

Over and above its energy efficiency, longevity and luxurious finish, a Lacuna bi-folding door contains a revolutionary, patented top frame system with an integrated rail. The system is more precise, more cost efficient during assembly and it offers a better finish than other solutions.

The system is available in different versions, depending on the load the top frame is to bear. Assembling the system makes the entire installation easier. Compared to traditional folding doors, assembly time can be reduced by half which obviously results in cost reduction.

Many times, the Lacuna top frame system makes introducing I-beams or similar in a renovation or substitution project superfluous. The top frame is available with carbon fiber reinforcement, which makes it partially or fully self-bearing.



All products can be sold with a complete mounting kit which includes everything required for assembly (except electrical tools, joints, etc.). We distinct between lintels made of wood, iron, concrete or brick. Our mounting kit also allows for later adjustments, should this ever become necessary. The mounting kit can be used in 85% + of all installations and renders a perfect result.

Lacuna is of course available for general consulting and the proper product selection for each individual project.

Lacuna manufactures bi-folding doors of up to 6 meters in width and 2.8 meters in height.

ORDERING A FOLDING DOOR

Lacuna folding doors can help you create your dream home, where the views, sights and sounds of your outdoors become a part of your indoors.

We also produce fixed parts, patio doors and folding windows. Please consult our homepage for further information.

By breaking down the process into five simple steps, anything from selection to delivery is made easy for our customers.

Meeting our customers' expectations is our success: you are always welcome to contact us so that we can help you find the right solution for you and your home.

Final pricing will depend on width, height, frame type, indoor and outdoor colours, glass type, type of handle, etc. Please fill in the simple form to receive a no-obligation quotation.



STEP 1

CONTACT LACUNA

Please contact your local Lacuna representative.

STEP 2

RECEIVE YOUR QUOTATION

Based on your wishes and our professional knowhow, we will prepare a customised quote for you, including drawings, dimensions and prices. The offer will be sent to you via e-mail alongside relevant information.

STEP 3

APPROVE THE DETAILS

Read through the quote and check over the specifications and attached materials. If the quote meets your wishes, please contact your Lacuna distributor to place an order and to tell us about your desired time of delivery.

STEP 4

ORDER CONFIRMATION

Your Lacuna distributor will return to you with an order confirmation, well ahead of starting the production and the delivery of your doors. Once you have read and agree with our order confirmation, simply respond as specified and the order will be released for production.

STEP 5

DELIVERY AND INVOICING

When your folding door is ready, you will receive an invoice and photographic documentation of your folding door. You will be contacted to arrange a delivery time. Our transport partners only deliver Lacuna folding doors if there is somebody to receive the door at the delivery address.

Europe • North America • Asia • Australia • Africa

www.LacunaOfDenmark.com



Lacuna representative:

Lacuna[®]
Made in Denmark

Lacuna A/S
Industrivej 2
DK-5550 Langeskov
+45 8689 8689
info@lacuna.dk
www.LacunaOfDenmark.com