

Scale bar 1:100 @ A3

Ian Smillie Architectural Services  
 75 Camden Road, Ipswich IP3 8JN  
 telephone 01473 714209  
 Do not scale from this drawing  
 - If in doubt ASK

As proposed elevations  
 Proposed extension  
 Beech Trees, School Road, Coddanham  
 For Steve Birch

Scale 1:100 @ A3 drg. number 2021218/24

Rev. A: Updated to clients comments

**Materials:**  
**Walls:** Facing brickwork, timber boarding  
**Roof:** Pantiles  
**Frames:** Aluminium

number and position of solar PV panels to specialists design

patio level flush with internal floor level



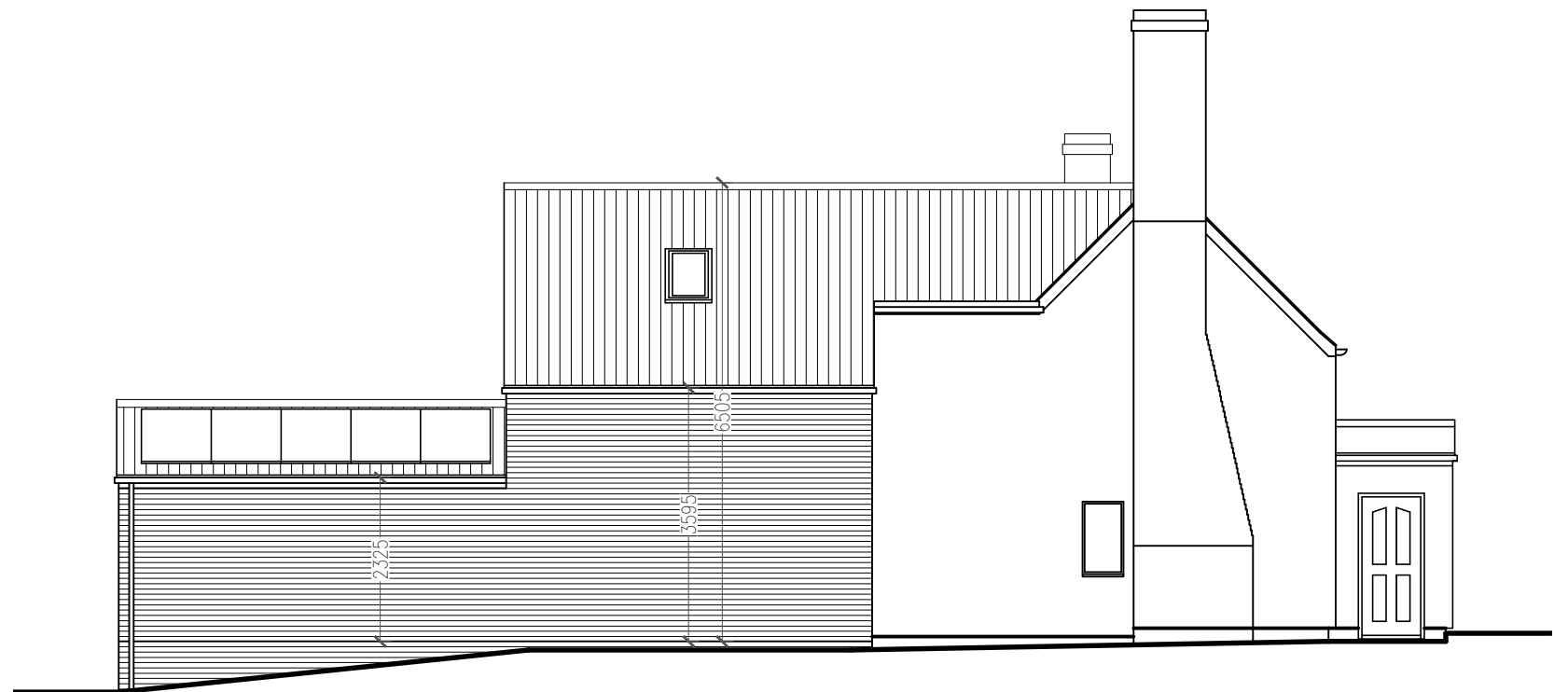
Front elevation to East



Side elevation to South



Rear elevation to West



Side elevation to South