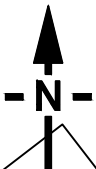


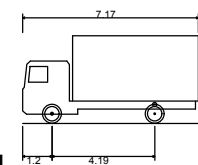
NOTE THE PROPERTY OF THIS DRAWING AND DESIGN IS VESTED IN KEY TRANSPORT CONSULTANTS LIMITED AND MUST NOT BE COPIED OR REPRODUCED IN ANY WAY WITHOUT THEIR WRITTEN CONSENT
CAD FILE NAME : F:\DATA\Jobs\1023 Hanham High Street\AutoCAD\1023-003B.dwg



RIGID VEHICLE LEAVING SITE

RIGID VEHICLE ENTERING SITE

RIGID VEHICLE TURNING IN SITE



FTA Design 7.5 Tonne Rigid Vehicle (2016)
 Overall Length 7.170m
 Overall Width 2.300m
 Overall Body Height 3.580m
 Min Body Ground Clearance 0.375m
 Track Width 2.120m
 Lock to lock time 3.00s
 Kerb to Kerb Turning Radius 7.000m

HANHAM HIGH STREET

TRACKING OF FTA 7.5 TONNE RIGID VEHICLE

KILDARE HOMES



KEY TRANSPORT CONSULTANTS LTD
 26 BERKELEY SQUARE
 BRISTOL
 BS8 1HP
 Tel : 0117 920 9430
 E-mail : info@key-transport.com

REV	DESCRIPTION	DR	CH	PA	DATE
A	Revised layout and tracking	BE	SM	SM	12/19
B	Revised layout	BE	SM	SM	12/19

DRAWN BY	CHECKED BY	PASSED BY	DATE	SCALES @ A3 SIZE	ISSUE STATUS
BE	SM	SM	NOV 19	1:200	PRELIMINARY

DRAWING NUMBER	REV.
1023-003	B