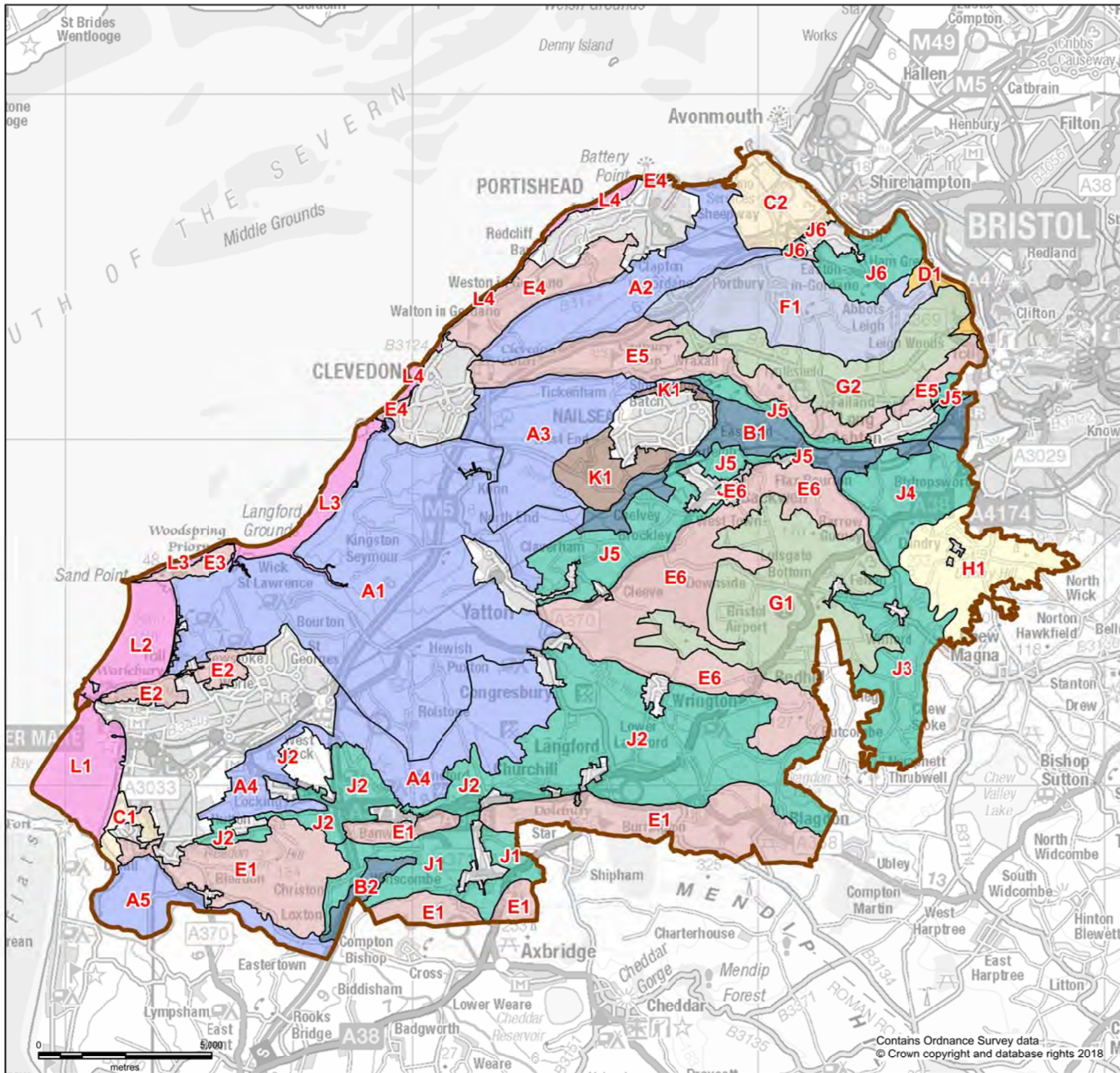





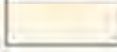






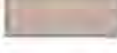

Appendix A

-
*Figures from Landscape Character Area,
North Somerset Council Supplementary Planning Guidance;
Wardell Armstrong*

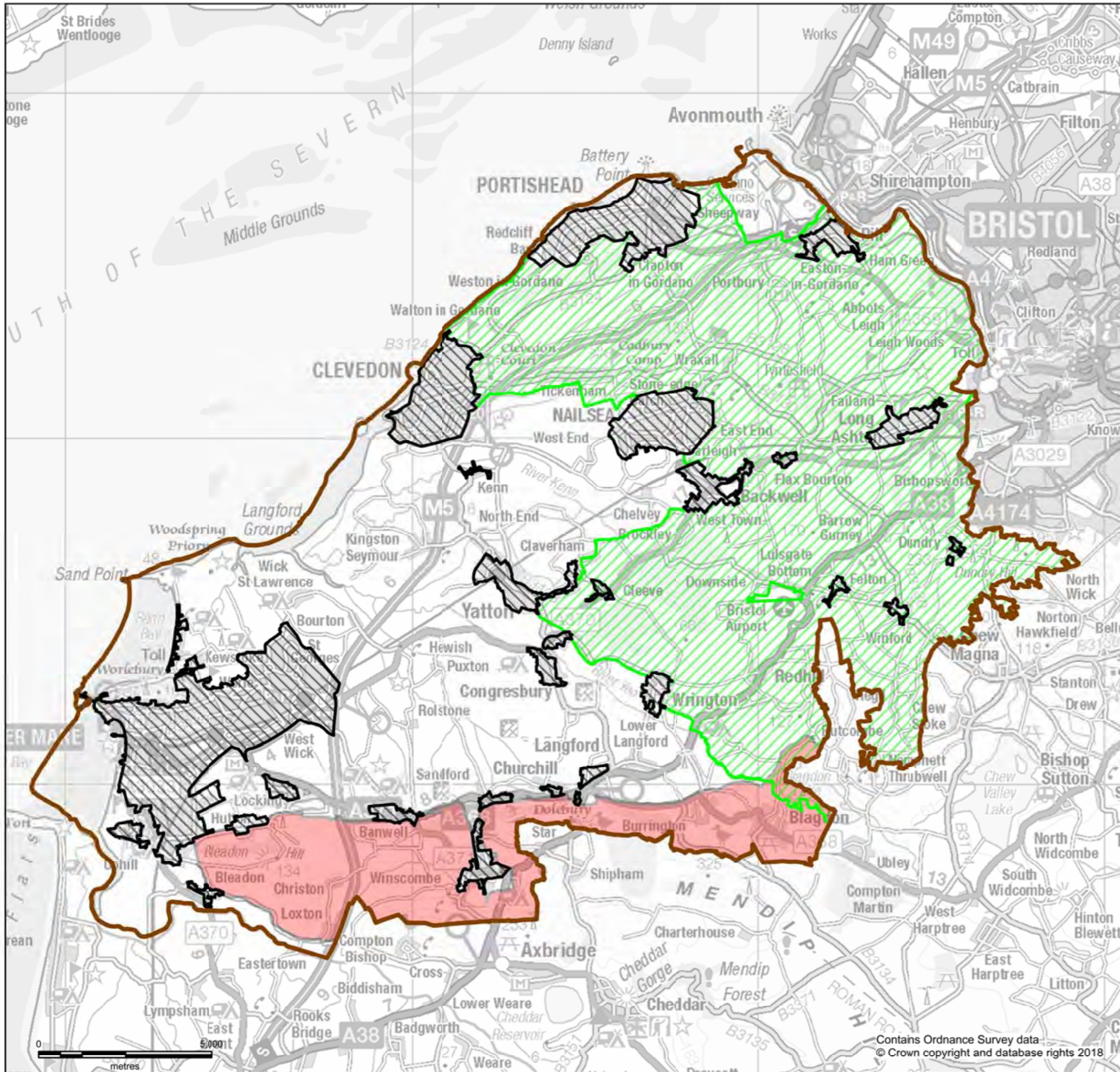


North Somerset Landscape Character Assessment Update
Figure B: Landscape Character Areas





KEY

-  North Somerset Boundary
-  **A : Moors**
 A1: Kingston Seymour and Puxton Moors
 A2: Clapton Moor
 A3: Kenn and Tickenham Moors
 A4: Locking and Banwell Moors
 A5: Bleadon Moor
-  **B : River Floodplains**
 B1: Land Yeo, Kenn River and River Avon Flood Plain
 B2: Lox Yeo River Flood Plain
-  **C : Settled Coastal Edge**
 C1: Weston Bay Settled Coastal Edge
 C2: Portbury Settled Coastal Edge
-  **D : Limestone Gorges**
 D1: Avon Gorge
-  **E : Limestone Ridges and Combes**
 E1: Mendip Ridges and Combes
 E2: Worlebury Ridges and Combes
 E3: Middlehope Ridges and Combes
 E4: Portishead Ridges and Combes
 E5: Tickenham Ridges and Combes
 E6: Cleeve Ridges and Combes
-  **F : Sandstone Uplands**
 F1: Abbots Leigh Sandstone Uplands
-  **G : Settled Limestone Plateau**
 G1: Broadfield Down Settled Limestone Plateau
 G2: Failand Settled Limestone Plateau
-  **H : Settled Hills**
 H1: Dundry Hill
-  **J : Rolling Valley Farm Land**
 J1: Lox Yeo Rolling Valley Farmland
 J2: River Yeo Rolling Valley Farmland
 J3: Chew Rolling Valley Farmland
 J4: Colliters Brook Rolling Valley Farmland
 J5: Land Yeo and Kenn Rolling Valley Farmland
 J6: Avon Rolling Valley Farmland
-  **K : Farmed Coal Measures**
 K1: Nailsea Farmed Coal Measures
-  **L : Inter-tidal Bays**
 L1: Weston Bay
 L2: Sand Bay
 L3: Woodspring Bay
 L4: Clevedon





North Somerset Landscape Character Assessment Update
Figure A: Location and Context

- KEY**
-  North Somerset Boundary
 -  Settlement Boundary
 -  Green Belt
 -  Area of Outstanding Natural Beauty

Contains Ordnance Survey data
 © Crown copyright and database rights 2018



© Crown copyright and database rights 2018 OS 100023397.
You are granted a non-exclusive royalty free, revocable licence solely to view the Licensed Data for non-commercial purposes for the period during which North Somerset Council makes it available. You are not permitted to copy, sub-license, distribute, sell or otherwise make available the Licensed Data to third parties in any form. Third party rights to enforce the terms of this licence shall be reserved to OS.

