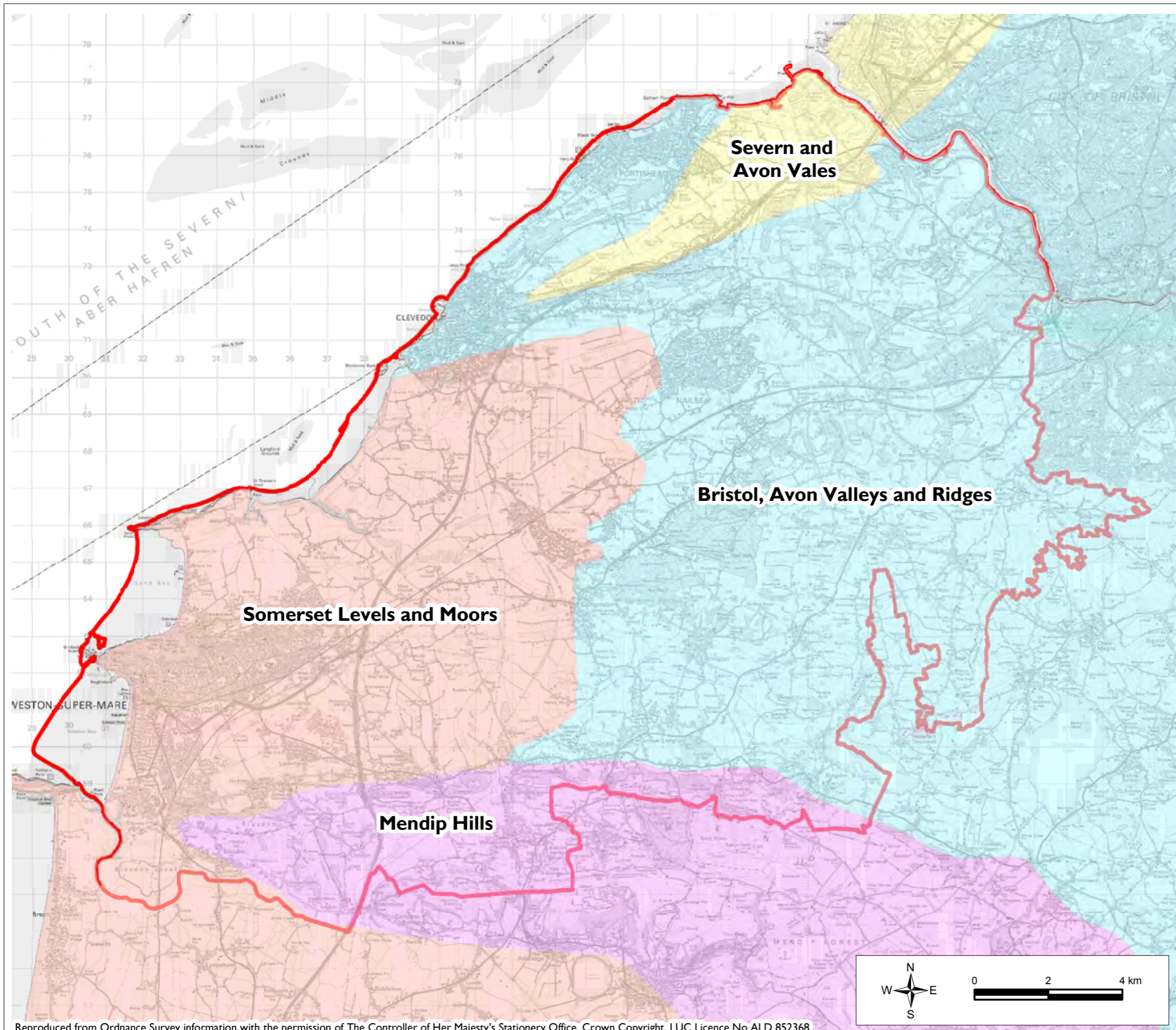


Appendix B

*Figures from Landscape Character Assessment SPG , London Land Use  
Consultants*



**NORTH SOMERSET  
LANDSCAPE CHARACTER  
ASSESSMENT**

**Figure 2:  
National Character Area Context**

- Key**
- North Somerset Boundary
- Joint Character Areas**
- Bristol, Avon Valleys and Ridges
  - Mendip Hills
  - Severn and Avon Vales
  - Somerset Levels and Moors

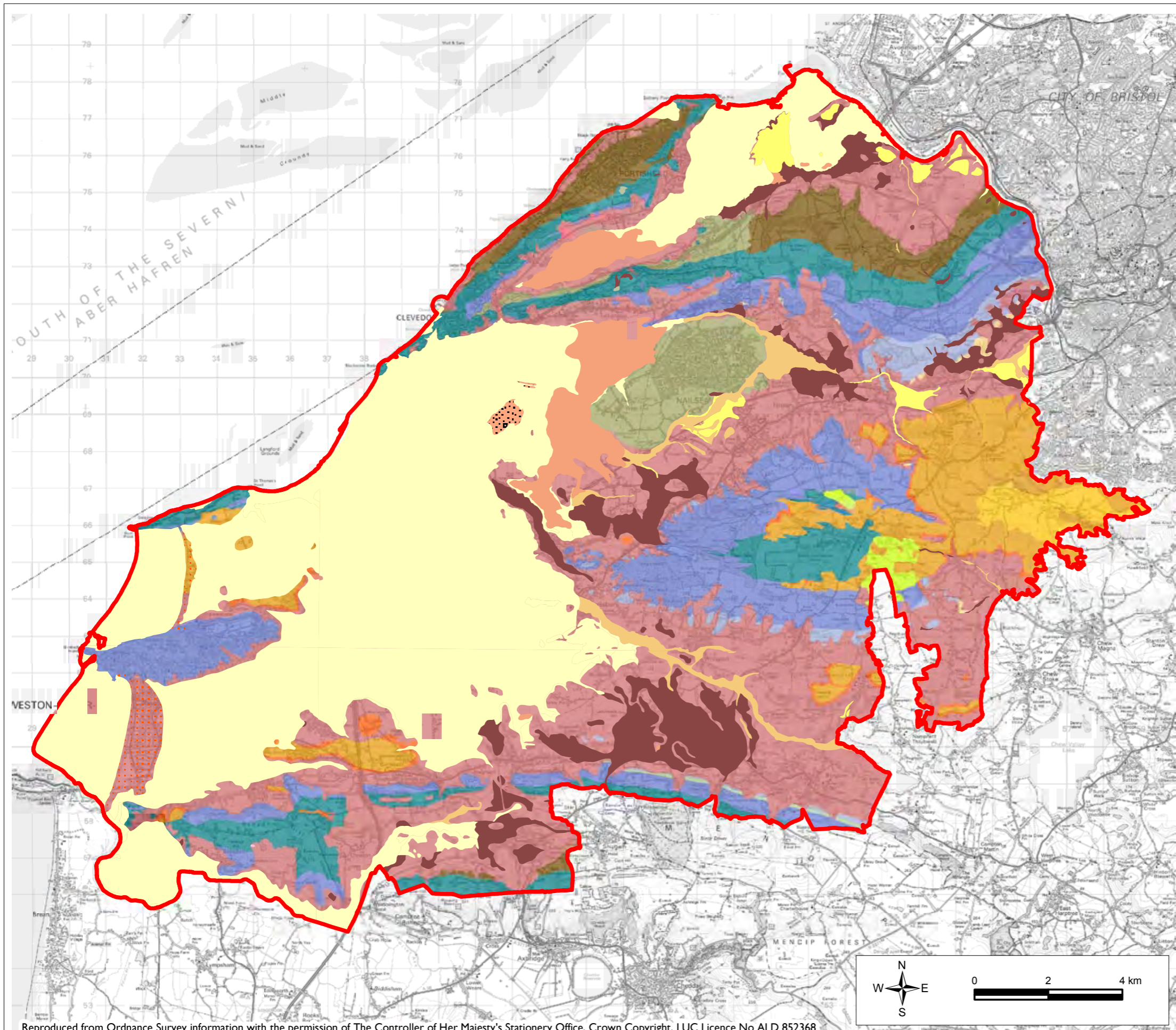
Source:  
JCA - English Nature and Countryside Agency  
Mendip LCA -

Drawing No:  
3170-01\_001\_location\_and\_context\_A4.mxd

LAND USE CONSULTANTS  
43 Chalton Street  
London NW1 1JD  
Ph: 020 7383 5784  
Fax: 020 7383 4798  
Luc@london.landuse.co.uk



Reproduced from Ordnance Survey information with the permission of The Controller of Her Majesty's Stationery Office, Crown Copyright, LUC Licence No ALD 852368



**NORTH SOMERSET  
LANDSCAPE CHARACTER  
ASSESSMENT**

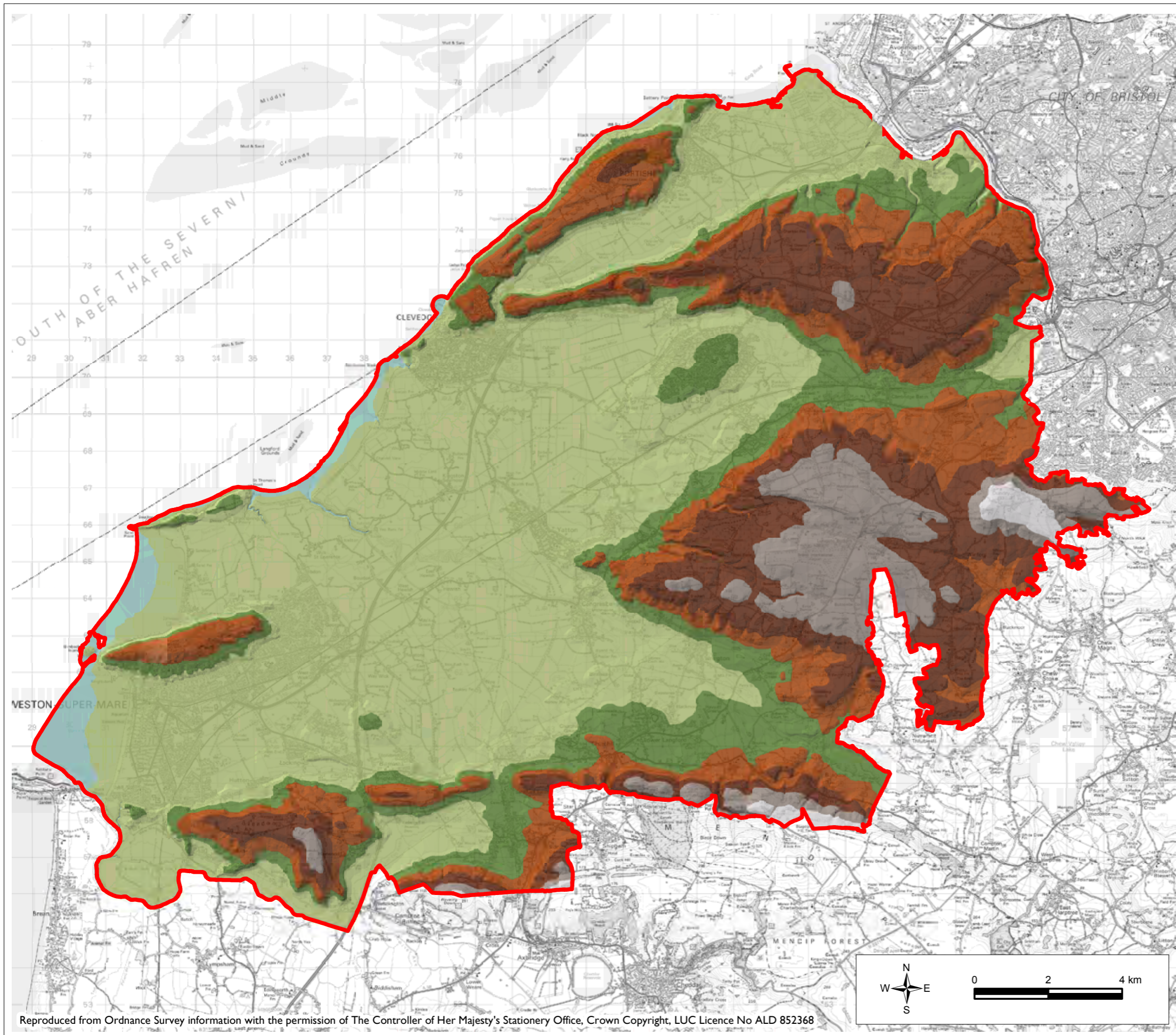
**Figure 4:  
Simplified Geology  
Key**

- North Somerset Boundary
  
- Superficial**
- Blown Sand
- Peat
- Alluvium
- River Terrace Deposits
- Beach & Tidal Flat Deposits (undiff.)
- Head (undiff.)
- Sand/Gravel (Uncert. Age&Origin)
- Glaciofluvial Deposits (undiff.)
- Burtle Beds
  
- Bedrock**
- Jurassic**
- Inferior Oolite Group
- Lias Group
- Harptree Beds
- Triassic**
- Penarth Group
- Mercia Mudstone Group
- Carboniferous**
- Coal Measures Group
- Chinastones
- Quartzitic Sandstone Formation
- Hotwells Group
- Clifton Down Group
- Black Rock Group
- Devonian**
- Old Red Sandstone

Source: Derived from 1:50,000 scale  
BGS Digital Data under Licence 2003/149A  
British Geological Survey. NERC  
Drawing No: 3170-01\_003\_simplified\_geology\_A4.mxd  
LAND USE CONSULTANTS  
43 Chalton Street  
London NW1 1JD  
Ph: 020 7383 5784  
Fax: 020 7383 4798  
Luc@london.landuse.co.uk



Reproduced from Ordnance Survey information with the permission of The Controller of Her Majesty's Stationery Office, Crown Copyright, LUC Licence No ALD 852368



# NORTH SOMERSET LANDSCAPE CHARACTER ASSESSMENT

**Figure 5:  
Simplified Topography**

**Key**  
 North Somerset Boundary

**Elevation (m)**

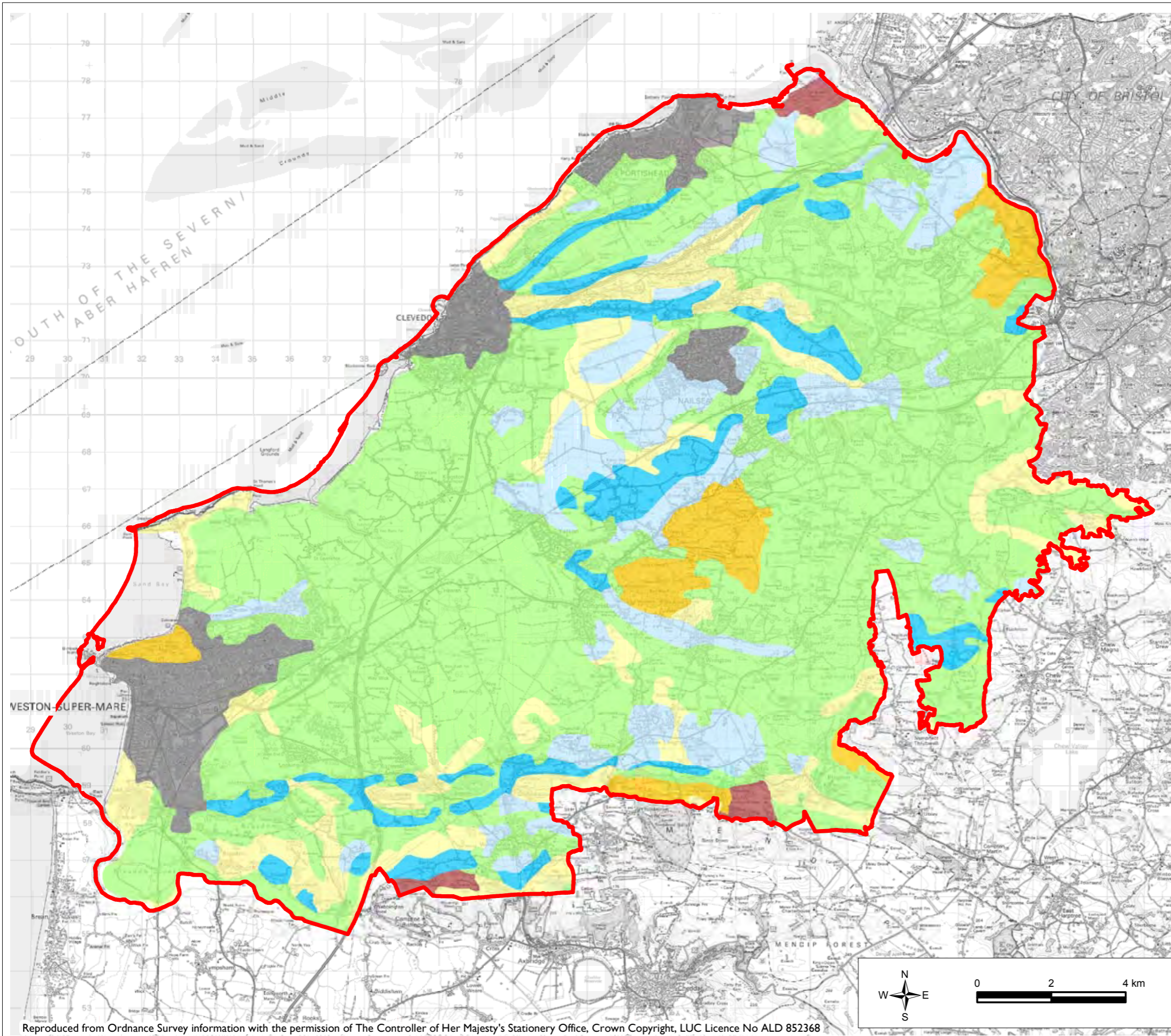
	200.1 - 242.6
	150.1 - 200.0
	100.1 - 150.0
	50.1 - 100.0
	25.1 - 50.0
	0.1 - 25.0
	-4.0 - 0.0

Drawing No:  
3170-01\_04\_simplified\_topography\_A4.mxd

LAND USE CONSULTANTS  
 43 Chalton Street  
 London NW1 1JD  
 Ph: 020 7383 5784  
 Fax: 020 7383 4798  
 Luc@london.landuse.co.uk



Reproduced from Ordnance Survey information with the permission of The Controller of Her Majesty's Stationery Office, Crown Copyright, LUC Licence No ALD 852368



## NORTH SOMERSET LANDSCAPE CHARACTER ASSESSMENT

**Figure 7:  
Agricultural Land Classification**

### Key

- North Somerset Boundary
- Grade 1 - Land with very minor or no physical limitations to agricultural use
- Grade 2 - Land with some minor limitations which exclude it from Grade 1
- Grade 3 - Land with moderate limitations due to soil, relief or climate, or some combination of these factors which restricts the choice of crops, timing of cultivations, or level of yield
- Grade 4 - Land with severe limitations due to adverse soil, relief or climate or a combination of these
- Grade 5 - Land with very severe limitations due to adverse soil, relief or climate, or a combination of these
- Non Agricultural
- Urban

Source:  
DEFRA

Drawing No:  
3170-01\_006\_agric\_land\_class\_A4.mxd

LAND USE CONSULTANTS  
43 Chalton Street  
London NW1 1JD  
Ph: 020 7383 5784  
Fax: 020 7383 4798  
Luc@london.landuse.co.uk





Architecture by Studio HIVE  
33 Oakfield Road  
Clifton, Bristol BS8 2AT  
United Kingdom