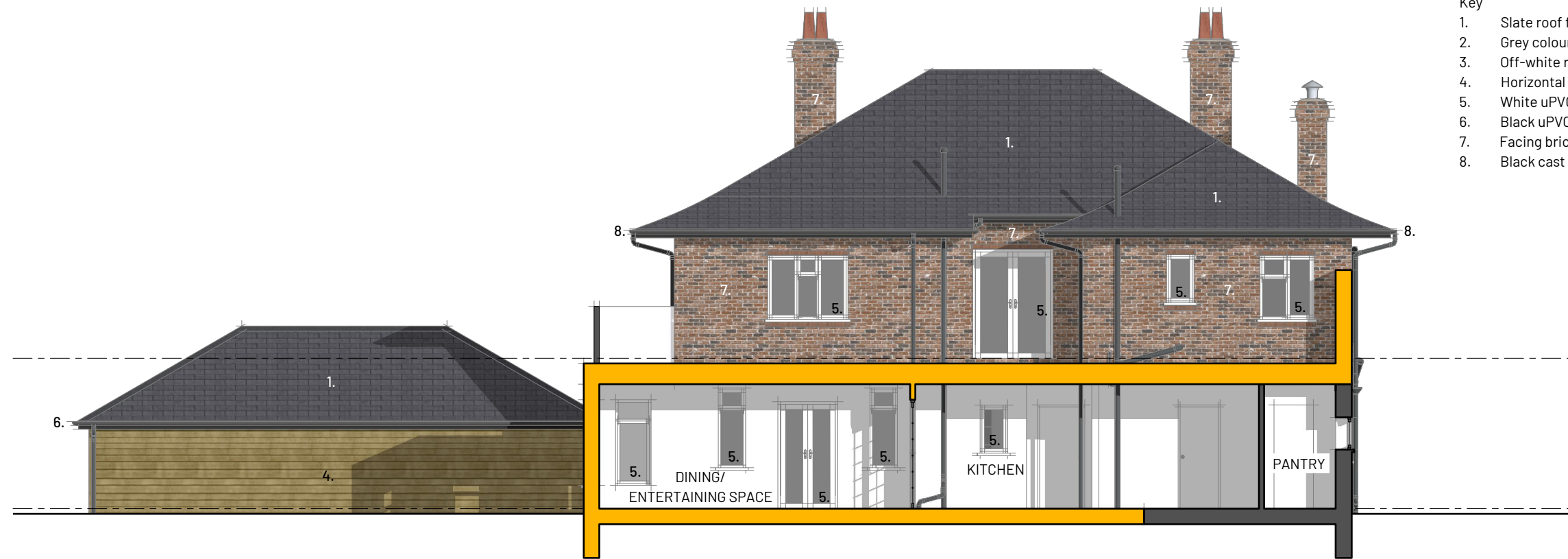


Section A:A



Section B:B

- Key
- 1. Slate roof finish.
 - 2. Grey colour flat roof finish.
 - 3. Off-white render wall finish.
 - 4. Horizontal weatherboard cladding.
 - 5. White uPVC windows / doors.
 - 6. Black uPVC rainwater goods.
 - 7. Facing bricks.
 - 8. Black cast iron / uPVC rainwater goods.

