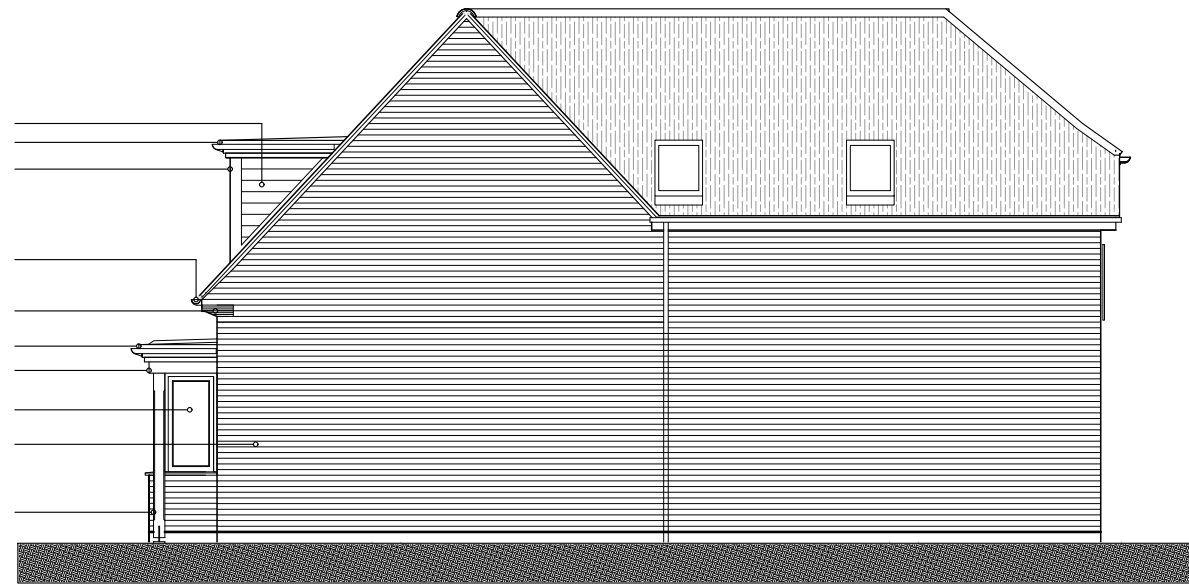




south elevation

- tiled roof (small format terracotta colour) with half round terracotta clay ridge tiles & pointed verge
- Tiled cheeks to dormer
- flat roof with lead effect finish
- UPVC white fascias and soffits
- Tile finish between windows to dormer
- UPVC casement windows
- UPVC black gutters, downpipes & associated fittings and brackets
- corbel detail in tile to match No 44
- flat roof with lead effect rolls
- UPVC white fascias and soffits
- UPVC casement bay window
- red FFL face brick bedded and pointed in natural mortar
- composite front door in factory paint finish
- timber support post with arised corners



east elevation

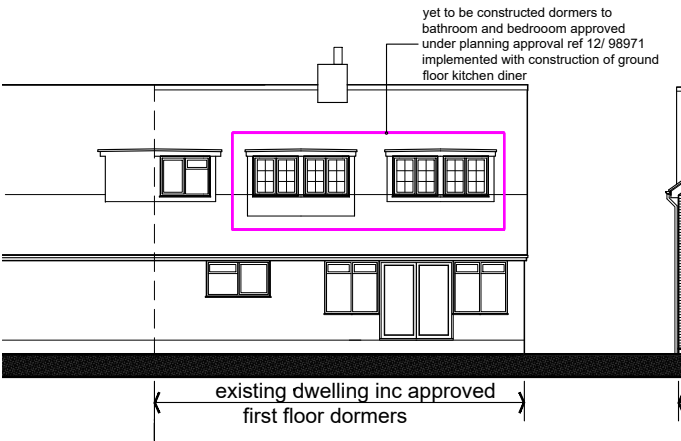


north elevation

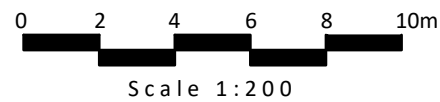
- tiled roof (small format terracotta colour) with half round terracotta clay ridge tiles & pointed verge
- UPVC black gutters, downpipes & associated fittings and brackets
- UPVC white fascias and soffits
- UPVC casement windows
- UPVC casement doorset
- laminated glass balustrade fixed back to brickwork
- velux rooflight
- brickwork header course above opening
- bifold doorset
- red FFL face brick bedded and pointed in natural mortar



west elevation



north elevation in context



Proposed elevations & north elevation in context

rev.	date	details	drawn	check
PLANNING				
project:	Proposed Dwelling		project no:	2222
	44 Frys Lane		dwg no:	005
	Hordle		rev:	
drawing:	proposed elevations & north elevation in context		scale:	as specified
	eos		drawn by:	date:
	eos		checked by:	date:
	eos			12.01.23
	eos			12.01.23