

Condition No 8

PRIOR TO ANY WORKS ABOVE SLAB LEVEL: BIODIVERSITY ENHANCEMENT STRATEGY

Prior to any works above slab level, a Biodiversity Enhancement Strategy for protected and Priority species shall be submitted to and approved in writing by the local planning authority.

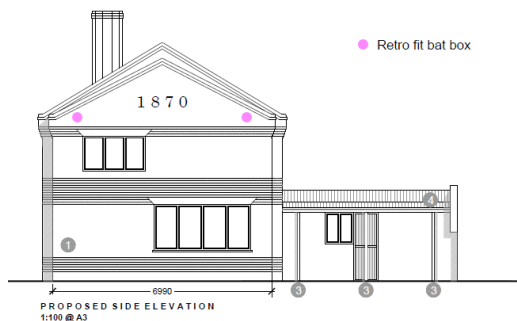
The content of the Biodiversity Enhancement Strategy shall include the following:

- a) Purpose and conservation objectives for the proposed enhancement measures;*
- b) detailed designs or product descriptions to achieve stated objectives;*
- c) locations, orientations, and heights of proposed enhancement measures by appropriate maps and plans;*

- d) persons responsible for implementing the enhancement measures;*
- e) details of initial aftercare and long-term maintenance (where relevant).*

The works shall be implemented in accordance with the approved details prior to occupation and shall be retained in that manner thereafter.

- 2 no retrofit bat boxes – on East Gable



- Ecologist Biodiversity Enhancements statement extract below (full assessment appendix 4)

6.5 Biodiversity Enhancements

- 6.5.1 In line with the NPPF (2021), biodiversity enhancements will include the installation of two externally mounted bat boxes on the east gable end of the new extension. The boxes will be suitable for crevice-dwelling species, such as the genus *Pipistrellus*. Both boxes will be erected a minimum of 4m above ground level to reduce the risk of predation. No security or other external lighting will shine directly onto or within proximity to the boxes to encourage use by bats.

