



Design and Access Statement

The Bank House Social Club

05/09/23

Statement completed by **Yaseen Laher**

Rev	Date	By	Comments
1	05/09/2023	Yaseen Laher	V1

Contents

1. Introduction
2. Context
3. Design
4. Access
5. Conclusion
6. Appendices
 - 6.1 Site Location Drawing
 - 6.2 ANPR Location Drawing
 - 6.3 Signage Plan
 - 6.4 Signage Templates
 - 6.5 Pay and Display Location
 - 6.6 Example ANPR System.
 - 6.7 Camera Column Detail
 - 6.8 Signage Pole Detail
 - 6.9 Pay and Display Detail

1. Introduction

1.1 Background

ParkingEye propose to install a car park management system on an existing car park which utilises automatic number plate recognition cameras (ANPR) and associated signage to monitor the entrance and exit of vehicles within the specified car park.

This design and access statement has been produced to accompany THE planning application in accordance with the requirements of *Town and Country Planning (Development Management Procedure) (England) Order 2013*

This report illustrates the manner in which the inclusive design and access requirements for the proposed development have been considered and worked into the proposal. This report will be submitted with the planning application.

2. Context of the Site

The site is currently used as a car park with 90 parking bays including disabled bays.

The proposal seeks to provide management of the existing car park to reduce car park abuse and ensure that spaces are available for genuine site users

The planning application red line boundary shows the area operated by the land owner and the extent of the existing car park.

3. Design

3.1 Introduction

The following section of the Design and Access Statement looks at the design issues and impacts of each key element of the proposed development against the following criteria

- Use
- Layout
- Scale
- Appearance

3.2 Overall Scheme

The site will continue to operate as a car park however it will be managed by the introduction of an ANPR system.

The proposal will consist of the following elements:

- ANPR cameras
- Camera columns
- Camera cabinets
- 3m signage poles
- Associated signage

Each of the above ground elements has incorporated sensitive design principles where feasible and these are detailed in the attached appendices. The assessment will focus on the potential effects each element will have on the existing local environmental and landscape character.

3.3 Design Issues and Impacts

The proposed development will have a minimal impact on the local landscape character and no landscape elements would be lost as a result of the construction and installation of an ANPR car park management system. As the site is an existing car park, the new infrastructure will be installed in an area that already incorporates similar style features.

4. Access

4.1 Proposed Access Arrangements

Access to the proposed development will be from the existing access road to the car park. The site access and exit arrangements will not change due to installation of an ANPR system.

Due to the small scale of the required infrastructure, extra vehicle movements will be limited to the movement of personnel travelling to and from the site.

5. Conclusion

The equipment used for the proposed development will be of a standard specification and be as environmentally sensitive as possible in terms of design. The scheme has been located on an area of land that is already used for car parking and as such will not significantly impact upon visual or landscape receptors. The proposal will ensure that the existing car park is used more effectively and reduce the amount of abuse that currently occurs.

6. Appendices
6.1 Site Location Drawing



6.2 ANPR Location Drawing



6.3 Signage Plan



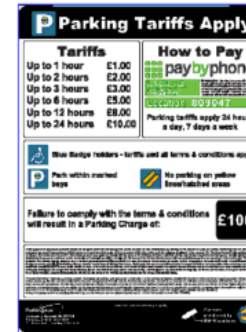
6.4 Signage Template



Sign 1
600x800mm



Sign 1a
600x800mm



Sign 2
600x800mm

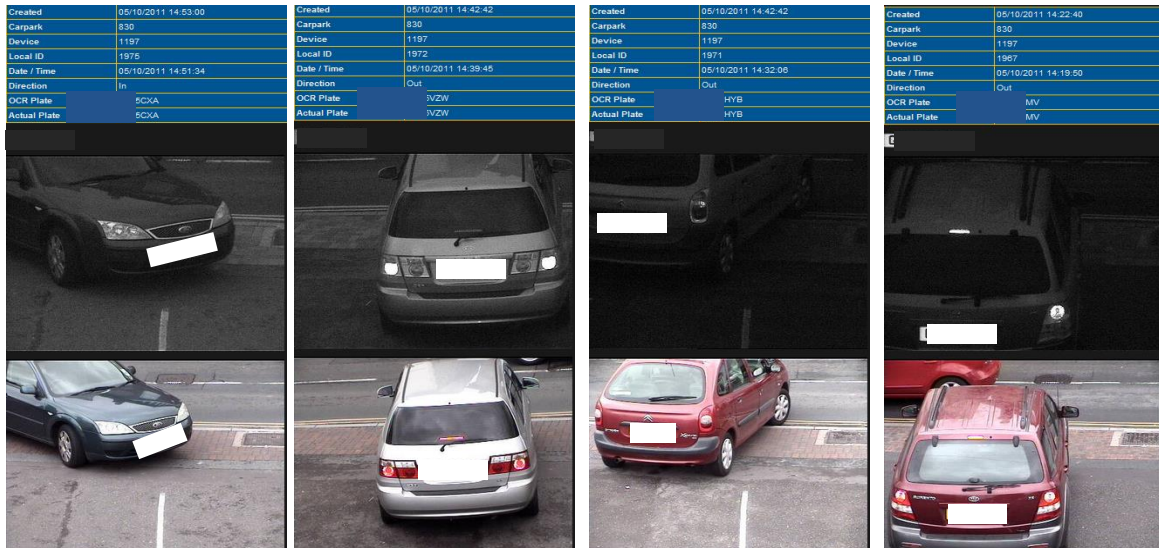


Sign 2a
600x800mm

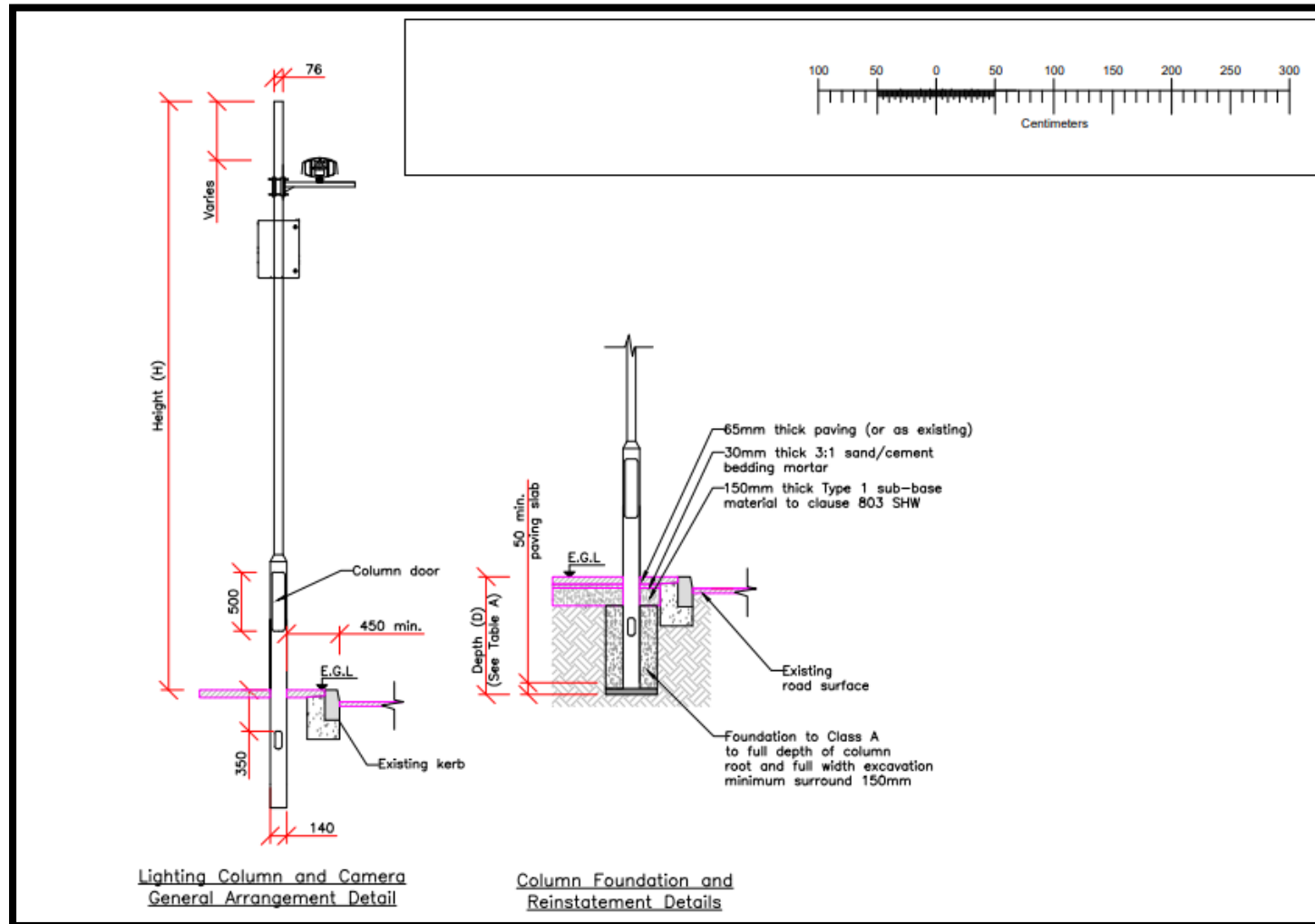
6.5 Pay and Display Location
N/A

6.6 Example ANPR System

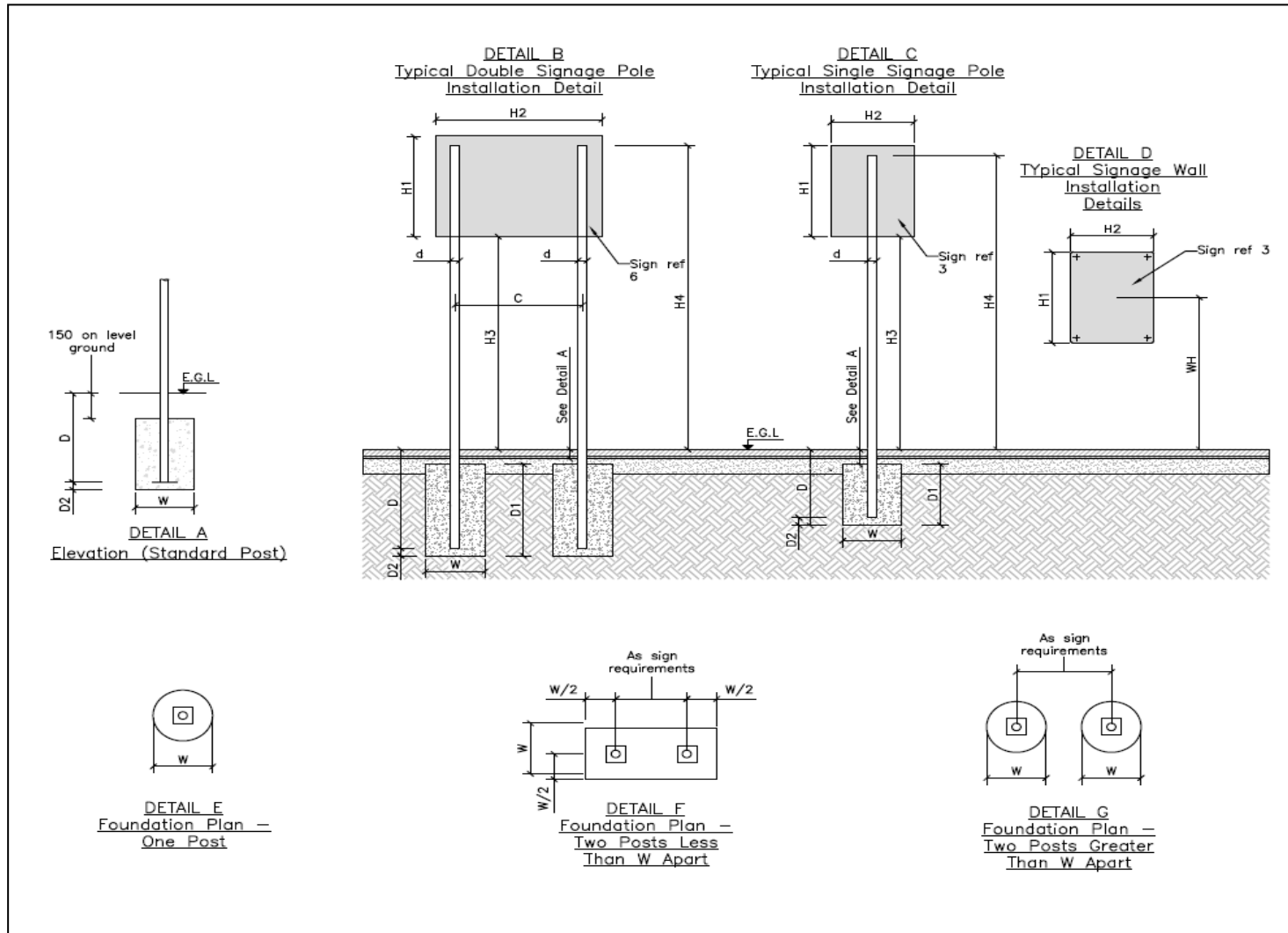
Below is an example of the images that the ParkingEye ANPR system captures within a designated capture zone.



6.7 Camera Column Detail



6.8 Signage Pole Detail – Generic Drawing



6.9 Pay and Display Detail

N/A