



LEGEND			
Utility Survey Point Features			
AV	Air Valve	GR	Gully Round
BB	Belisha Beacon	IC	IC - Comms
CP	CCTV Camera Pole	IC-E	IC - Electric
CR	Cable Riser	IC-R	IC - Round
DP	Down Pipe	IC-T	IC - Telecom
DPG	Down Pipe To Ground	IC-TCSUTFL	IC - TCSUTFL
EP	Electrical Pole	IC-CATV	IC - CATV
ER	Earth Rod	LP	Lamp Post
FM	Fire Hydrant	MH	MH
GM	Gas Meter	MH-DH	MH - District Heat
GV	Gas Valve	MH-F	MH - Foul
G	Gully		
MH	MH - Round		
MH-S	MH - Surface Water		
MK	Marker Post		
12.24	Pipe Riser		
RE	Recessed Light		
RE	Rodding Eye		
SC	Stop Cock		
TL	Traffic Light		
TP	Telegraph Pole		
V	Valve General		
WM	Water Meter		
WV	Water Valve		

Utility Survey Linework Features			
BT	British Telecom	EHV	Electrical - Extra High Voltage
CATV	Cable TV	HV	Electrical - High Voltage
CCTV	Closed Circuit TV	LV	Electrical - Low Voltage
COMMS	Communications	TFL	Electrical - TFL
FOL	Fibre Optic Line	SL	Street Lighting
FOL-C	Fibre Optic Line - Cot	TCSU	Traffic Control System Unit
FOL-E	Fibre Optic Line - Energis	G	Gas
FOL-F	Fibre Optic Line - Fibernet	GLP	Gas Low Pressure
FOL-L	Fibre Optic Line - Level 3	GIP	Gas Intermediate Pressure
FOL-M	Fibre Optic Line - Mercury	GMP	Gas Medium Pressure
FOL-MF	Fibre Optic Line - MFS	GHP	Gas High Pressure
FOL-T	Fibre Optic Line - Tanet	GPR+	Gas + Unknown
FOL-V	Fibre Optic Line - Virgin	ED	Empty Duct
FOL-VF	Fibre Optic Line - Vodafone	GPR-A	GPR Anomaly
FOL-VN	Fibre Optic Line - Verizon	UA	Unknown Asset
FOLW	Fibre Optic Line - WCOM	UA-PS	UA Passive Sweep
TS	Telecom Service	UCL	Unknown Cable
CW	Combined Water	GPR-S	GPR Slab
FW	Foul Water	GPR-SA	GPR Survey Area
SW	Surface Water	GPR-BS	GPR buried structure
RM	Rising Main	GPR-RS	GPR Reinforced Slab
FRW	Fire Water		GPR interface layer (change in material)
WM	Water Main		
WS	Water Service		
E	Electrical Service		
EE	Electrical Earth		
P	Electrical Pilot Cable		
DH	District Heat		
FU	Fuel Pipe		
XX	Decommissioned/Abandoned		
Manhole ID	Manhole ID		
PEO	Pot End		
Scope of Works	Scope of Works		

PAS128 Quality Levels			
(Consult document 'PAS128-2014.pdf' for full details)			
XX-A	Quality Level A	XX-B3	Quality Level B3
XX-B1	Quality Level B1	XX-B3P	Quality Level B3P
XX-B1P	Quality Level B1P	XX-B4	Quality Level B4
XX-B2	Quality Level B2	XX-C	Quality Level C
XX-B2P	Quality Level B2P	XX-D	Quality Level D

Special Survey Features			
E-XXXX-XXX	Survey Station	E-XXXX-XXX	Scan Target
ID A N-YYYY.YYYY	Survey Station	ID N-YYYY.YYYY	Scan Target
H-ZZZ-ZZZ		H-ZZZ-ZZZ	

Utility Survey Abbreviations			
AB	Abandoned	MH	Manhole
AR	Assumed Route	OE	Overhead Electric
BI	Illuminated Bollard	OT	Overhead Telecom
CL	Cover Level	SOF	Soft Level
CPD	Capped	TFR	Taken From Records
CUT	Disconnected Utility	TVM	Ticket Vending Machine
EDG	End of GPR Signal	UTO	Unable to Open
EOT	End of Tape	UTS	Unable to Survey
IC	Inspection Cover	UKN	Unknown
IL	Invert Level	WL	Water Level
CSER	Confined Space Entry Required	XXd	Service Depth
AC	Asbestos Cement	CO	Concret
BC	Brick Chamber	DI	Ductile Iro
CI	Cast Iron	PE	Polyethylene
SI	Spun Iron	ST	Steel
		WTR	Water

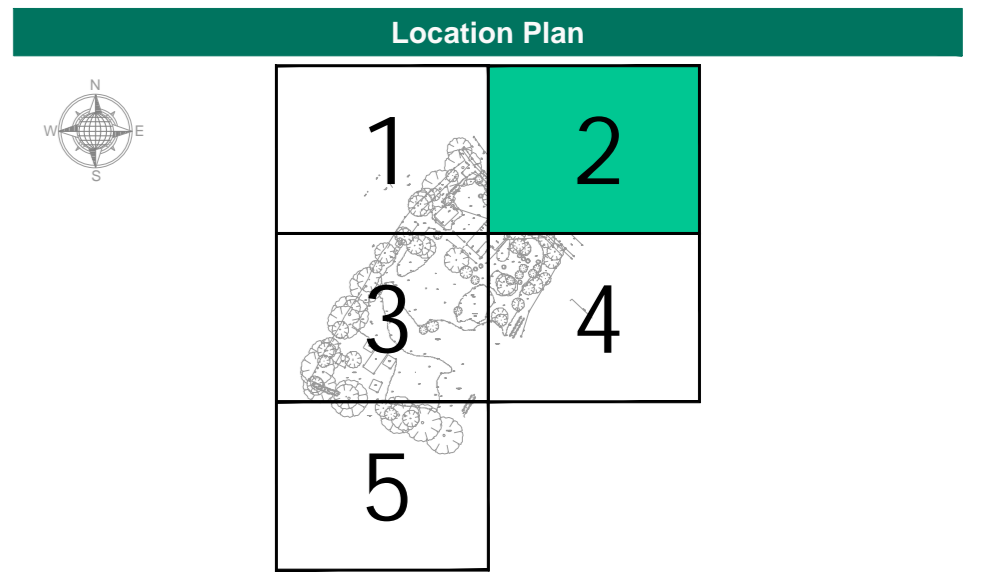
Utility Material Abbreviations	
Level Measured For Ducts/Pipes At Pits Is To Top of The Service	Level Measured For Drainage At Pits Is To Invert Level Of The Service
0.80d	0.80d

**Murphy Geospatial Disclaimer**

All reasonable endeavours have been used to capture the required data in the survey to the agreed standards of accuracy. Where features have been distorted due to a lack of access, the areas will be annotated as UTS (Unable To Survey). The Company shall not be liable for any damage or consequential losses arising from the reliance on survey information beyond its specified scale and accuracy, or survey information used for purposes other than that stated in the Contract of Works.

Any concerns with the survey should be raised with Murphy Geospatial, who will endeavour to promptly provide a remedy. The Client shall not seek recourse through any third party until such time as Murphy Geospatial have had the opportunity to address any concerns raised.

For full terms and conditions visit [www.murphygs.com](http://www.murphygs.com)



Revisions			
Rev	Description	Surveyed by	Drawn by
A	First Issue	LL - 23/06/23	BK - 04/07/23
		DS - 04/07/23	



Geospatial certainty you can trust [murphygs.com](http://murphygs.com)

**UK Head Office**  
39-41 North Road  
London

London Manchester Birmingham Glasgow Belfast Cork Kildare

Client	LNT Construction Ltd
Project	The Towers, Clacton Road, Weeley Heath CO16 4J Utilities and CCTV surveys
Site Address	Clacton Road, Clacton-on-Sea, CO16 9EF
Description	Underground Utility Survey (PAS128)
Survey Grid	Localised OSGB36(15) - Scale Factor 1.0
Survey Datum	GNSS - Ordnance Datum Newlyn (ODN)
RICS Band	Band E
Drawing Scale	1:100 @A0
Drawing Number	MGS53500-U-A11-02

**PLEASE NOTE:**

Topographical plan and Utility assets records supplied by client.