

West Yorkshire Shopfront LTD.

Unit 2, Watercock Street,
Wakefield road, Bradford BD4 7DZ
Phone: 07305555674, 07510101414, 01274031443
Email: westyorkshireshopfront@gmail.com
Web: www.westyorkshireshopfront.co.uk

Date:16/03/2023

Product specification

Description

The security roller shutters are constructed from 76mm Curved, galvanized solid 22-gauge lath.

Common use

Range from shop front security roller shutters to industrial roller shutter doors

Maximum Width

7000 mm

Dimensions

Normally 76 mm x 0.71 mm

Weight

9.34 kg per square meter

Finish

Galvanized bright rolled mild steel, polyester powder coat colors are available.

Construction

Standard guide rails: 65 mm x 32 mm x 3 mm – 100 mm x 32 mm x 3 mm dependent on width. Electric shutters require a 50 mm x 50 mm steel box section (both sides) used to allow for motor unit and safety brake. A 76 mm x 50 mm box section will be used for shutters over 160 kg in weight (5000 mm x 3200 mm approximately).

OPERATIONAL SPECIFICATION

Single Phase Electric

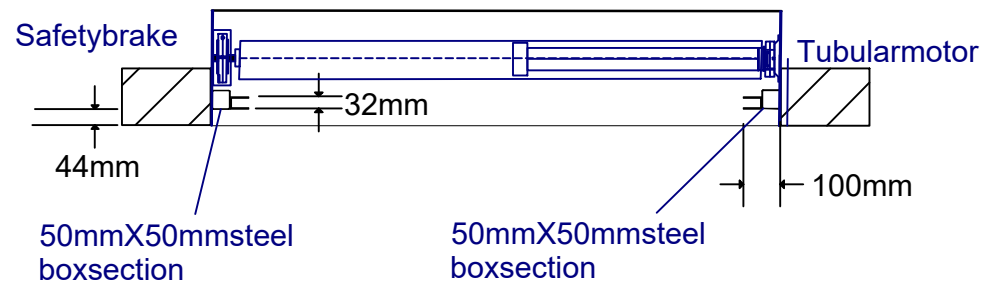
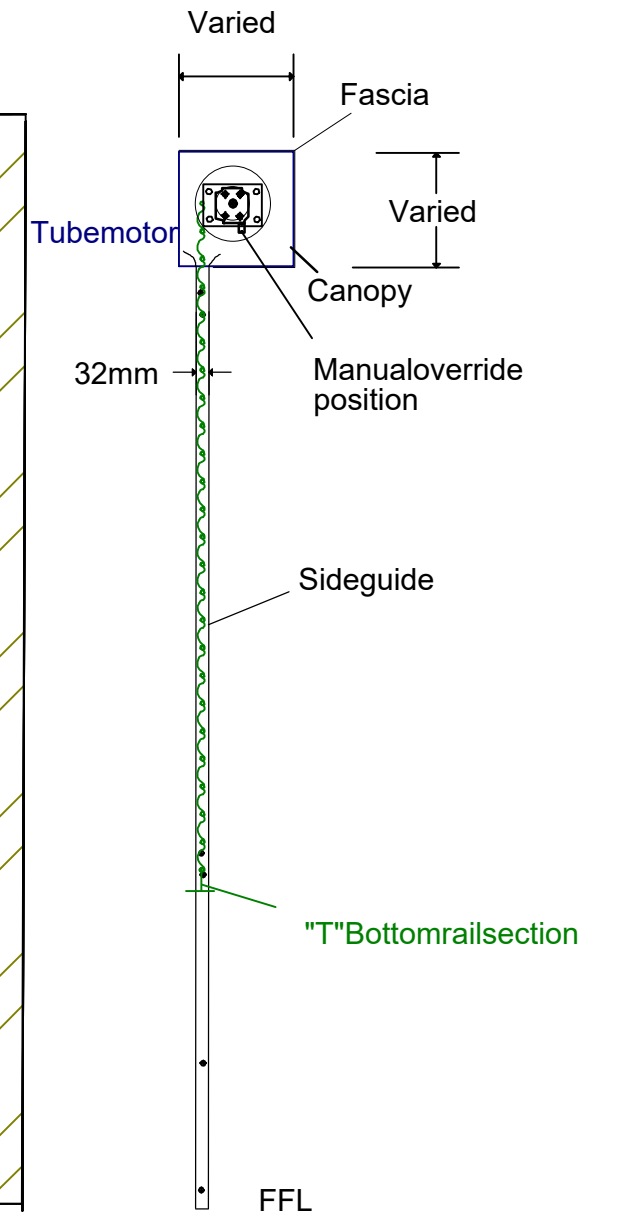
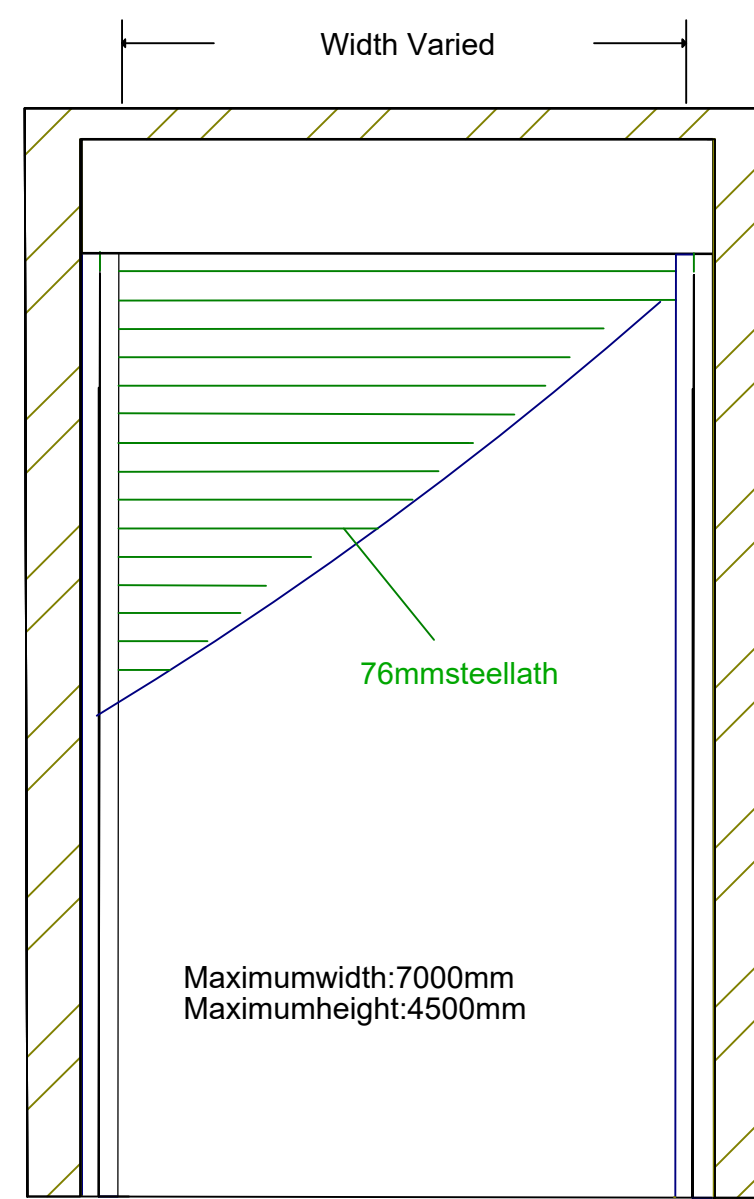
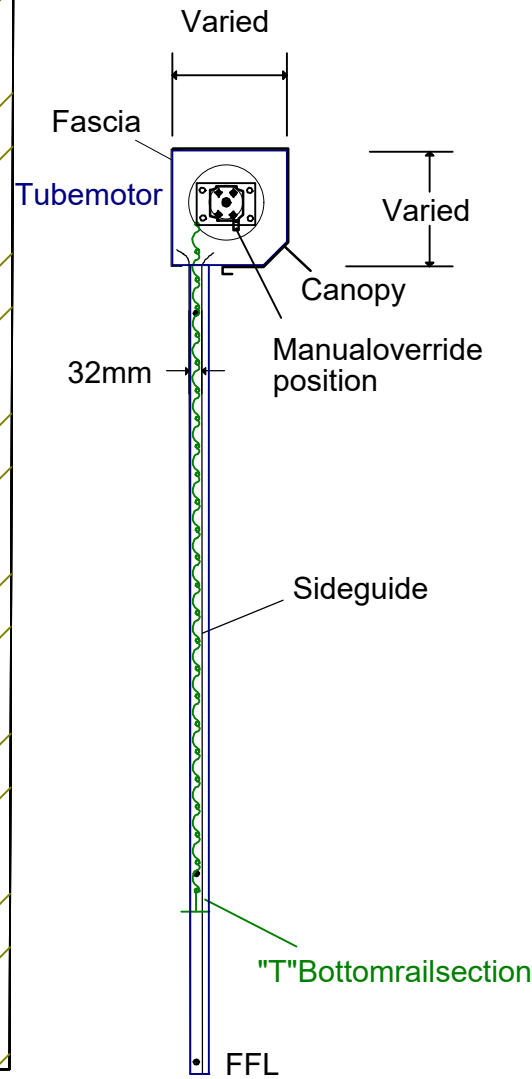
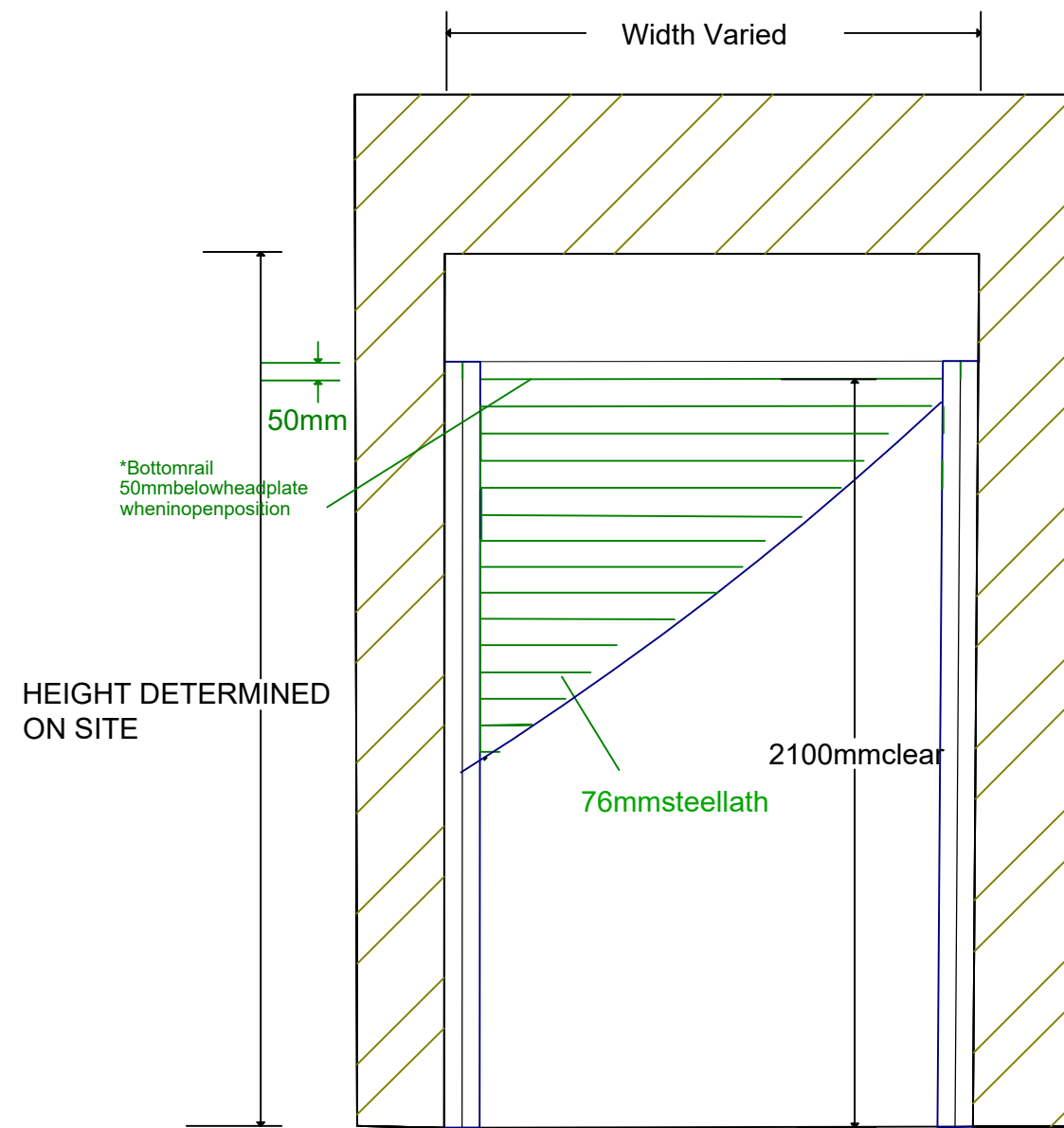
A tubular motor within the barrel assembly with limit switches and thermal cut out to prevent overheating. Draw 240 volts and 0.5 – 2.5 amps dependent upon the shutter size. Provision of a 13-amp fused spur is required for installation.

Override

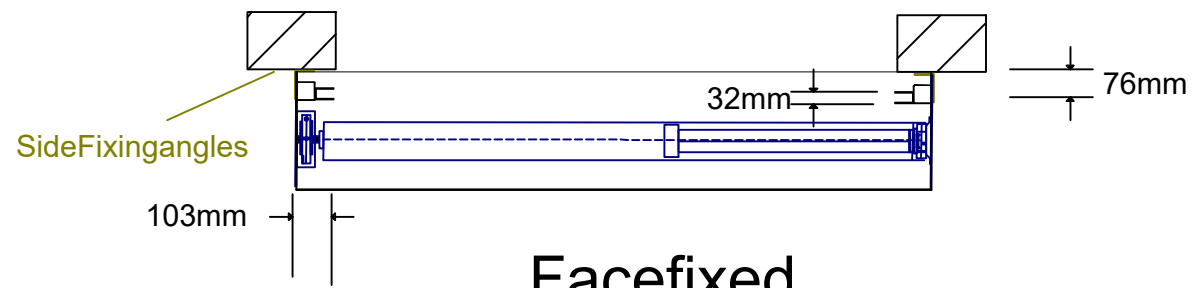
A manual override is included to operate the shutter in the event of a power failure. This is usually operable from one side only.

Control

Standard security key switch or rocker switch. Other controls are available on request.



Reveal fixed



Face fixed

SCALE 1:20@A3