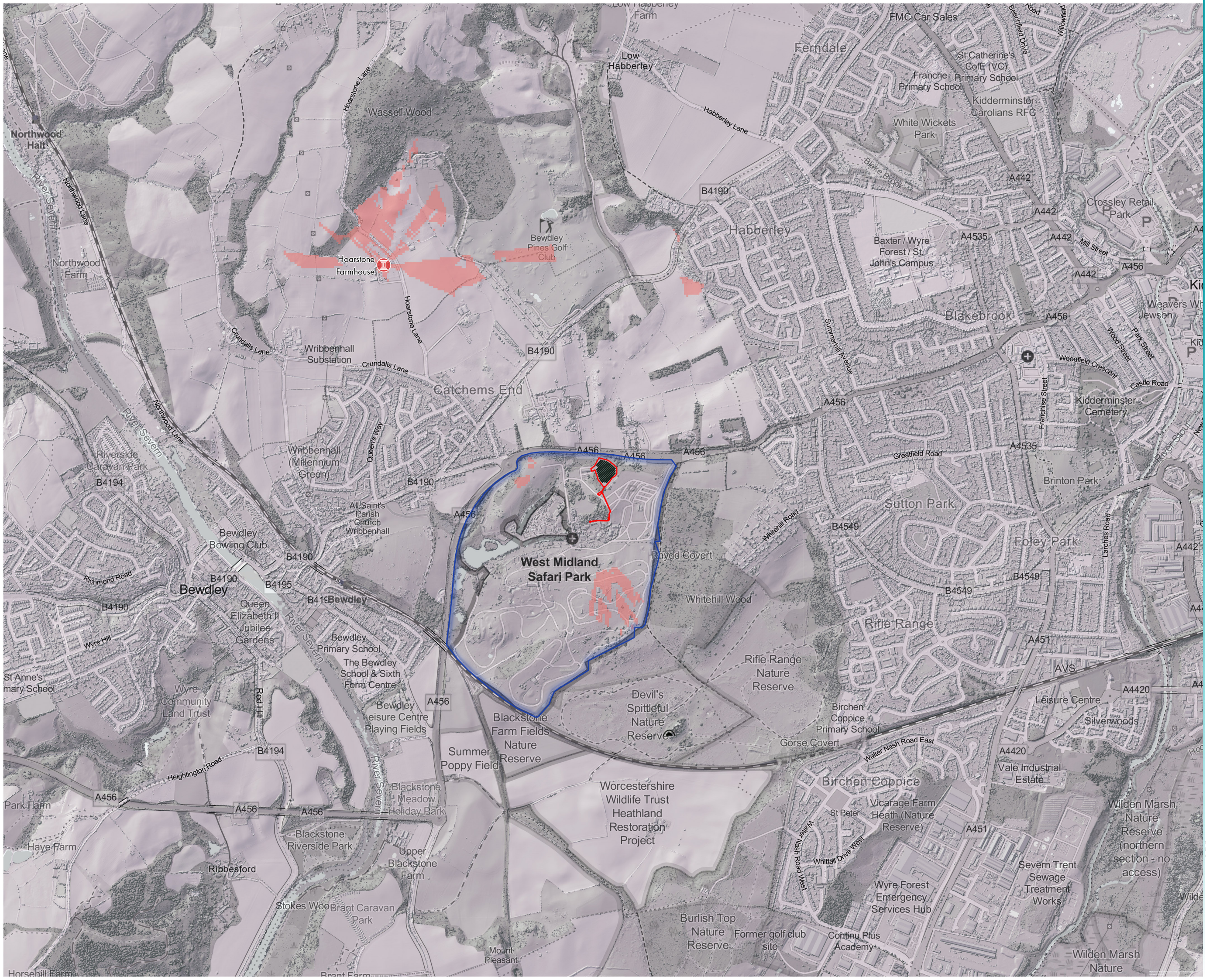


Appendix 6.4

Hoarstone Farmhouse Co-visibility

-  Development Area: 9,335 m²
-  West Midland Safari Park Ownership Boundary
-  Hoarstone Farmhouse
-  Hoarstone Farmhouse Co-visibility ZTV



Map Details
 Combined ZTV mapping of proposed array & Hoarstone Farmhouse. The ZTV mapping allows for exclusion zones of existing pockets of woodland and built form which would screen direct views of development. Whilst there may be no direct inter-visibility between the heritage asset and the proposed development, this mapping highlights the potential areas where both the proposed array and the heritage asset may be viewed from (co-visibility). The ZTV does not allow for determination of co-visibility within any one view. It is, rather, a tool to identify potential zones of combined (in combination or in succession) visibility.

The ZTV is computer generated in ReSoFT Windfarm V5 using OS landform terrain 50 data and takes into account natural and built features within the landscape. All barriers are considered by the software to obscure the development entirely with no demonstration of filtered views or partial screening. The earth's curvature and atmospheric refraction are included. Viewer height above the ground is 1.7m.

Scale: 1:15,000 @ A3



Client Name: E.ON Heat UK Ltd
 Site Name: West Midlands Safari Park
 Drawing Reference: COG321/APP/022/d
 Date: 22/09/23

This drawing is the property of Cogeo Planning & Environmental Services Ltd. Copyright is reserved by them & the drawing is issued on the condition that it is not copied either wholly or in any part without the written consent of Cogeo. OS Mapping Licence Number: 100022432.