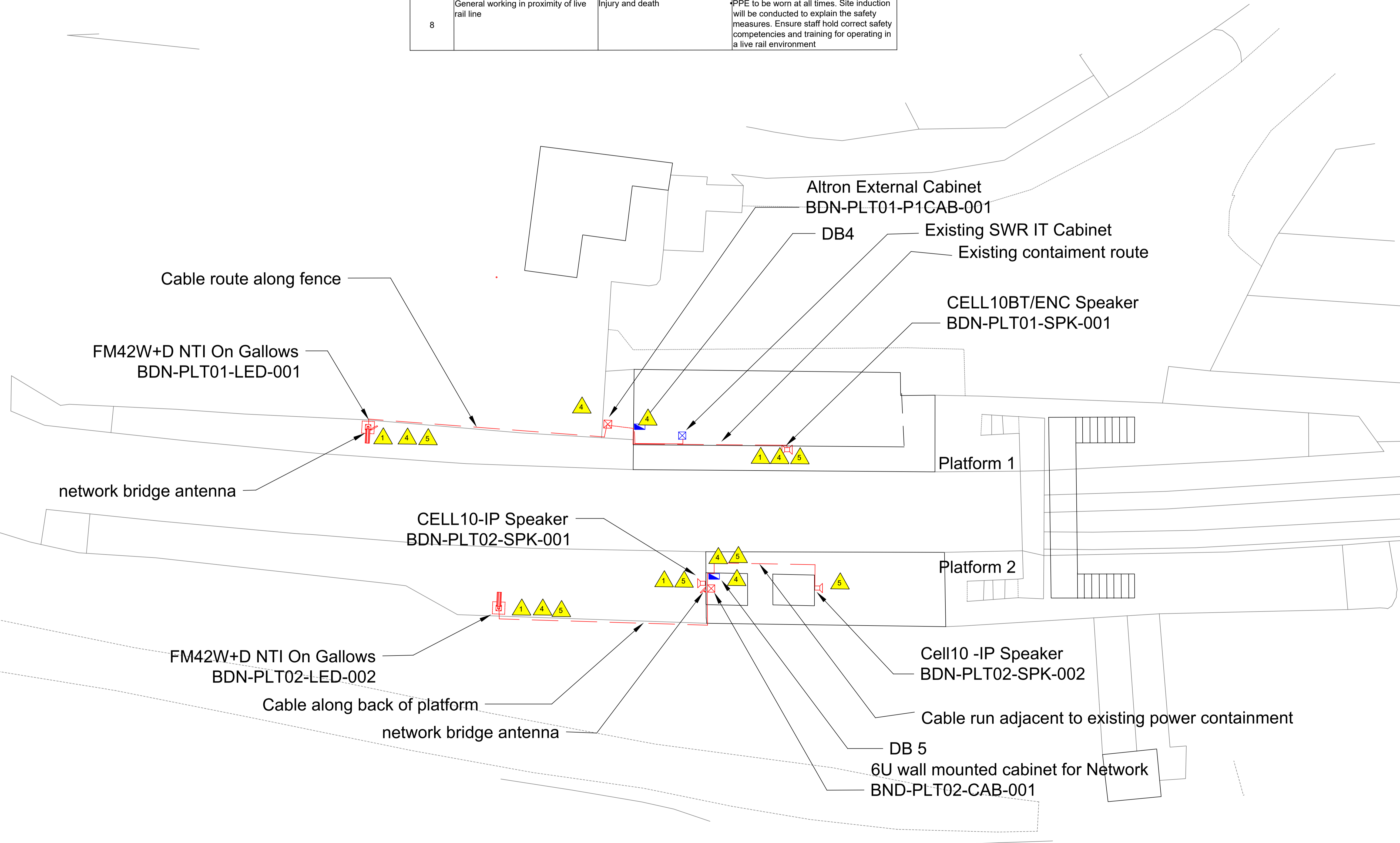


Designer Risk Assesment			
No.	Activity/Design	Hazard/Risk	Design measure taken, or being taken to eliminate or reduce hazard
1	SISS equipment falling into passenger flow	Injury to passengers	Details of equipment and mounting brackets are shared with project team for load analysis.
2	Adverse weather effect on Equipment	Performance of equipment will be affected by adverse weather condition.	IP 66, IP 65, IP 33 rated telecom equipment will be used to protect against adverse weather condition.
3	Electromagnetic interference to new comms equipment.	EMC Hazard	By using PADS / client approved equipment / components the risk can be mitigated. Use of shielded cable types where appropriate.
4	Electrical connection to equipment	Risk Of electricution/disruption to supplies	Ensure equipment is isolated before commencing work
5	Working at Height	Fall/ Death Injury to workers	Working at Heights regulations to be adhered to
6	Interface with civils for containment routes	Flaws in design due to lack of coordination	Co-ordinate with electrical & civil and structural teams as a part of IDC process
7	TOC SISS system architecture/ equipment details not fully available	System capacity may be inadequate to support new equipment	Site surveys conducted. Site SISS maintainer information requested
8	General working in proximity of live rail line	Injury and death	PPE to be worn at all times. Site induction will be conducted to explain the safety measures. Ensure staff hold correct safety competencies and training for operating in a live rail environment



Risks apply for entire site



Key Plan

General Notes

- BLACK - Existing Equipment
- RED - New Equipment
- BLUE - Modified Equipment
- GREEN - Removed Equipment

Rev	Date	Reason for Issue	D	C	A
A01	04/09/2023	For Approval	NTH	MS	SB

For Approval

Trans Data Management
 12 Raleigh Court
 Prestley Way
 Crawley
 RH10 9PD
 Tel : +44 (0) 1293 516 691
 Fax: +44 (0) 870 458 0586
 www.trans-data.co.uk

Project
PA & CIS New install Works

Title
Brading Station Risk Assesment

Project No.	Date	Checked By
23-13601	04/09/2023	MS

Revision	Scale	Approved By
A01	NTS	SB

Drawing No.
 23-13601_SWR_BDN_RSK