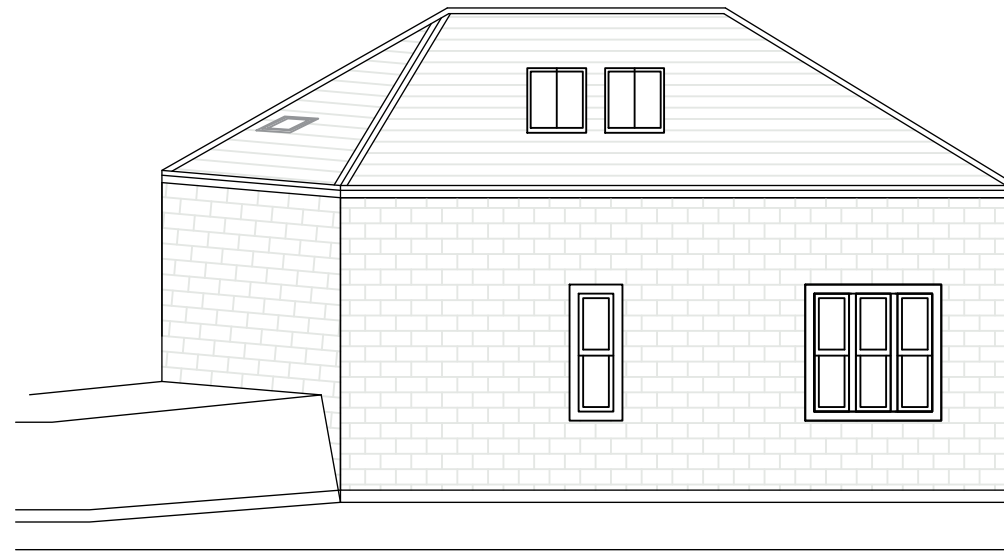
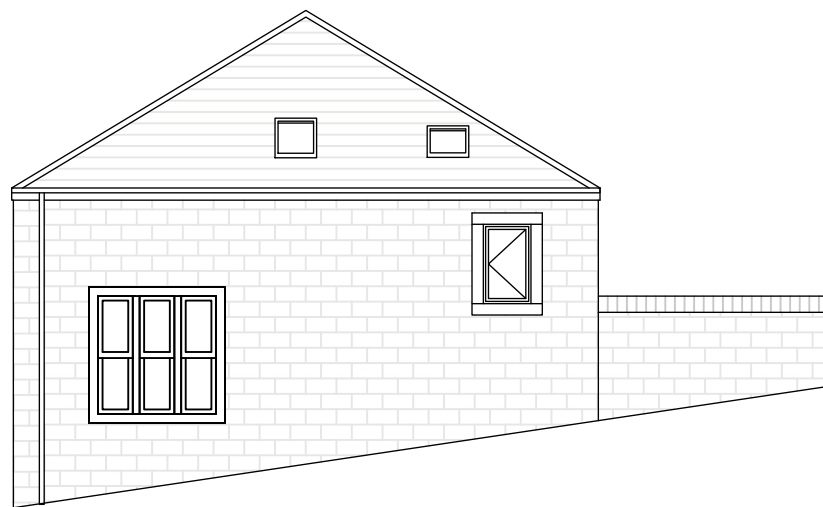


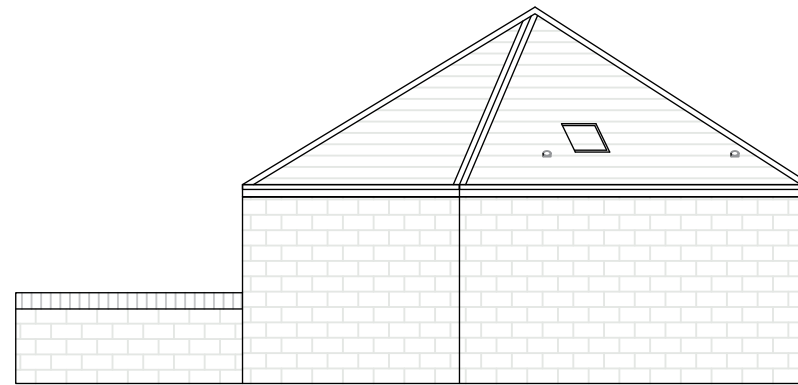
NORTH



SOUTH



EAST



WEST

General Notes:

North view:
No alterations to building, front door to remain.

South view:
Two Velux conservation style windows
Two main sliding sash windows toughened safety glass (to lower half)

East view:
1 main sash window with toughened glass to lower half
Two new conservation style Velux windows
One new fire escape window
New Air Source Heat Pump

West view:
New Velux replacing existing roof light.
Stonework to be made good where damage and cracks are. See engineers drawing and Bat roosting positions.

All stone work to be re-pointed. No re-pointing to be carried out between November and February.

Openings for new windows and doors to be made with dressed stone similar to existing stone. See stone detail drawing.

Renew all existing guttering.

Heritage Rose Vertical uPVC Sliding Sash windows - white

Existing roof windows to be replaced with low level conservation style Velux windows.

