

Advice : HSL-231003110413-442 DO NOT ADVISE AGAINST

Your Ref: 23/503927/FULL

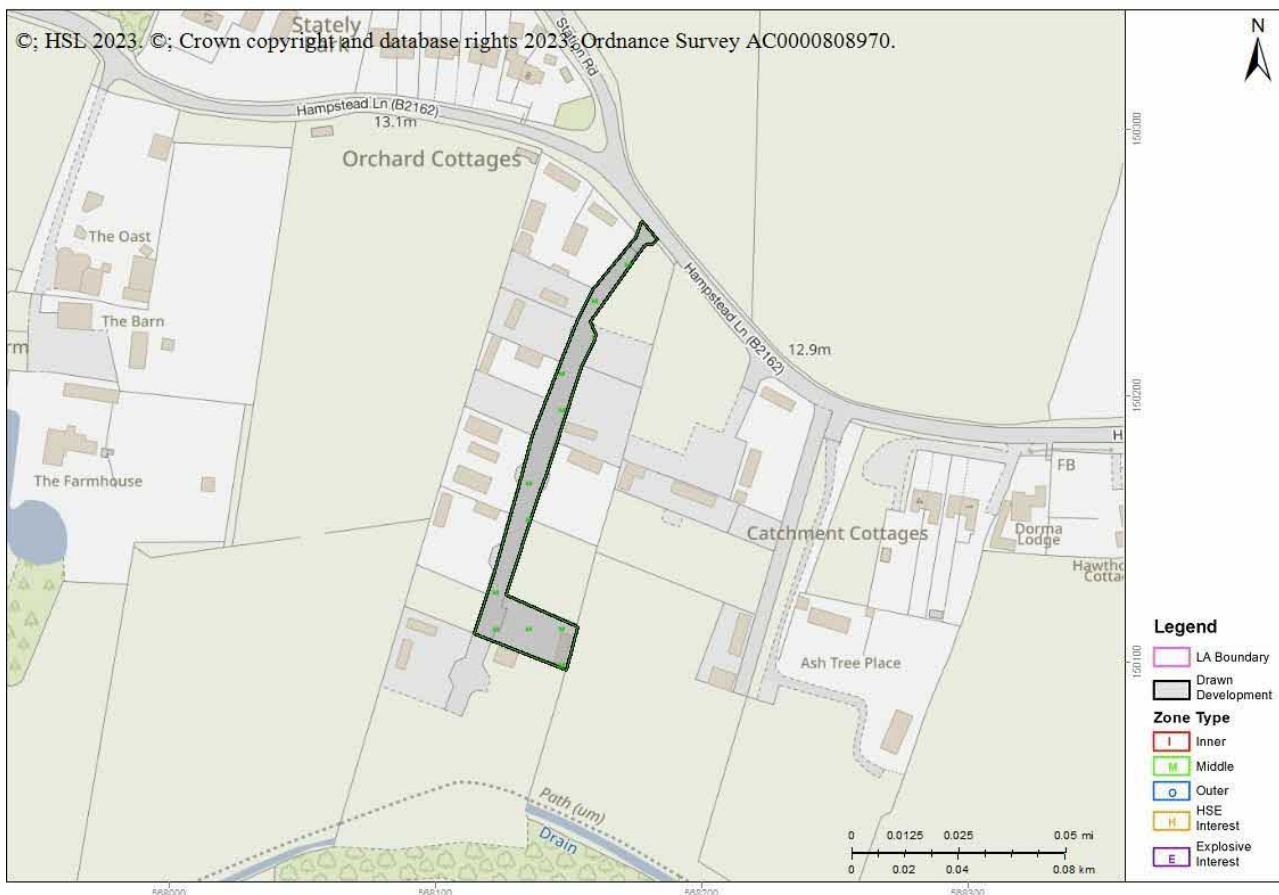
Development Name: Plot 10 The Three Sons Hampstead Lane Nettlestead Kent ME18 5HN

Comments: Retrospective change of use of the land for the use as 1no. Gypsy and Traveller pitch for personal occupation only, including siting of 1no. mobile home, 1no. Touring caravan and a utility shed with associated hard and soft landscaping.

Land Use Planning Consultation with Health and Safety Executive [Town and Country Planning (Development Management Procedure) (England) Order 2015, Town and Country Planning (Development Management Procedure) (Wales) Order 2012, or Town and Country Planning (Development Management Procedure) (Scotland) Regulations 2013]

The Health and Safety Executive (HSE) is a statutory consultee for certain developments within the Consultation Distance of Major Hazard Sites/ pipelines. This consultation, which is for such a development and is within at least one Consultation Distance, has been considered using HSE's planning advice web app, based on the details input on behalf of Mid Kent .

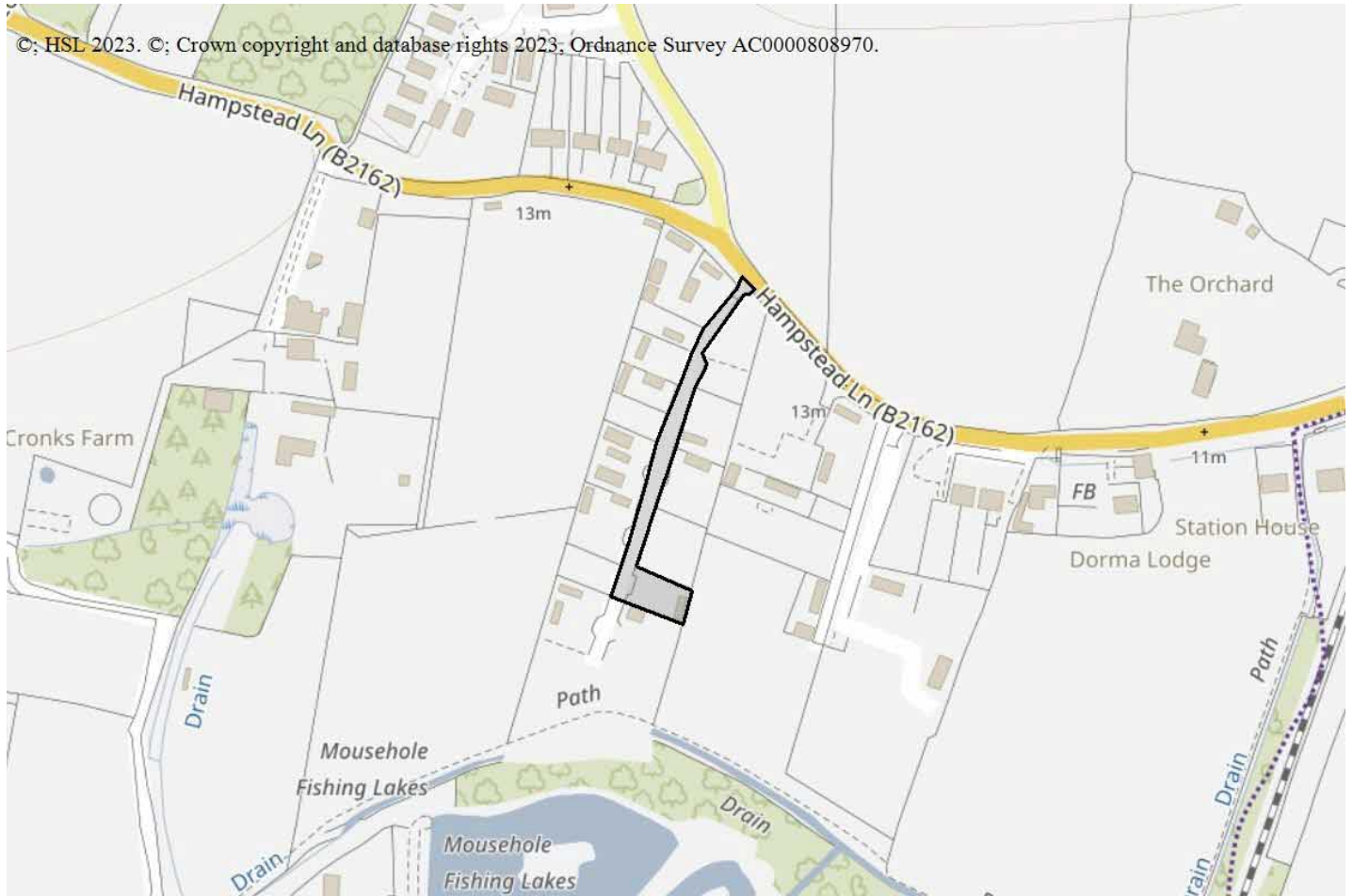
HSE's Advice: Do Not Advise Against, consequently, HSE does not advise, on safety grounds, against the granting of planning permission in this case.



Breakdown:

Housing : Do Not Advise Against

How many dwelling units are there (that lie partly or wholly within a consultation distance)? Less than 3



This advice report has been generated using information supplied by [REDACTED] Mid Kent on 03 October 2023.

Note that any changes in the information concerning this development would require it to be re-submitted.