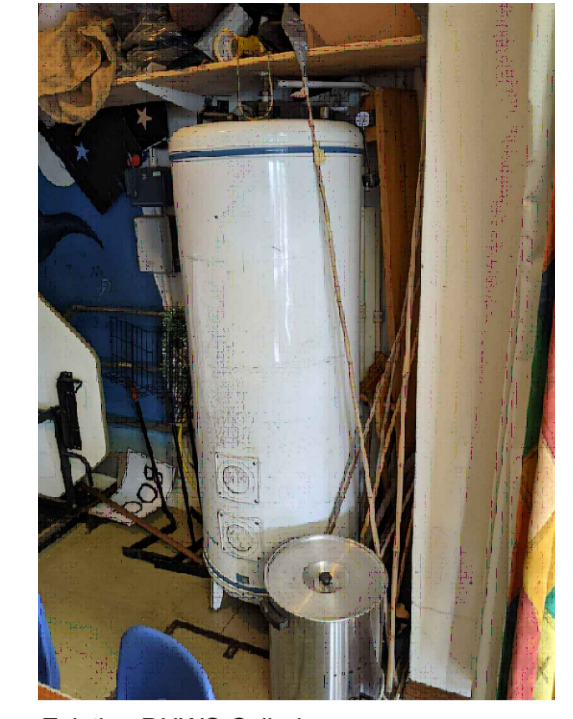
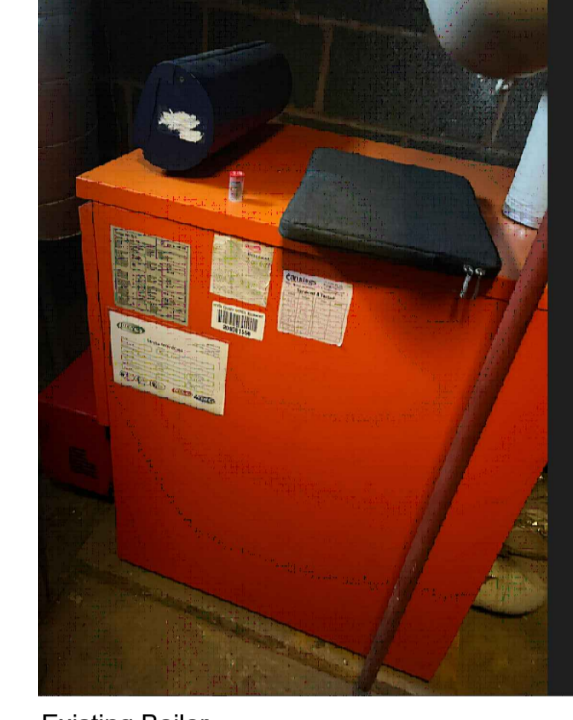


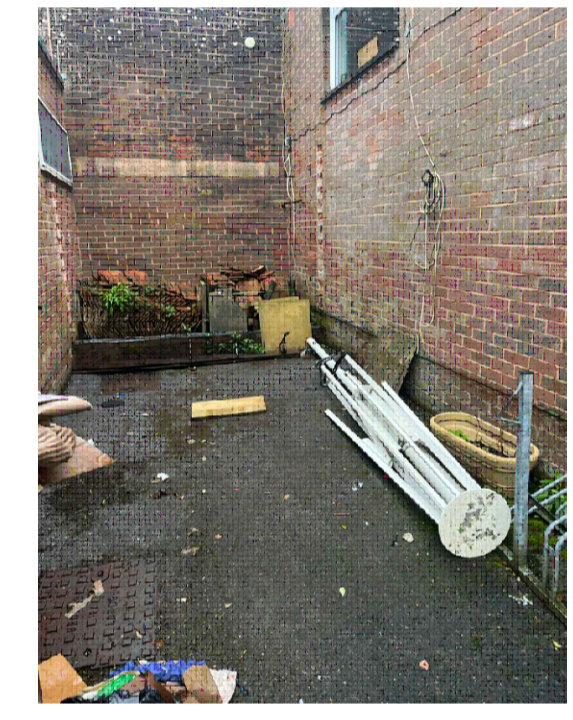
Existing oil storage Tank



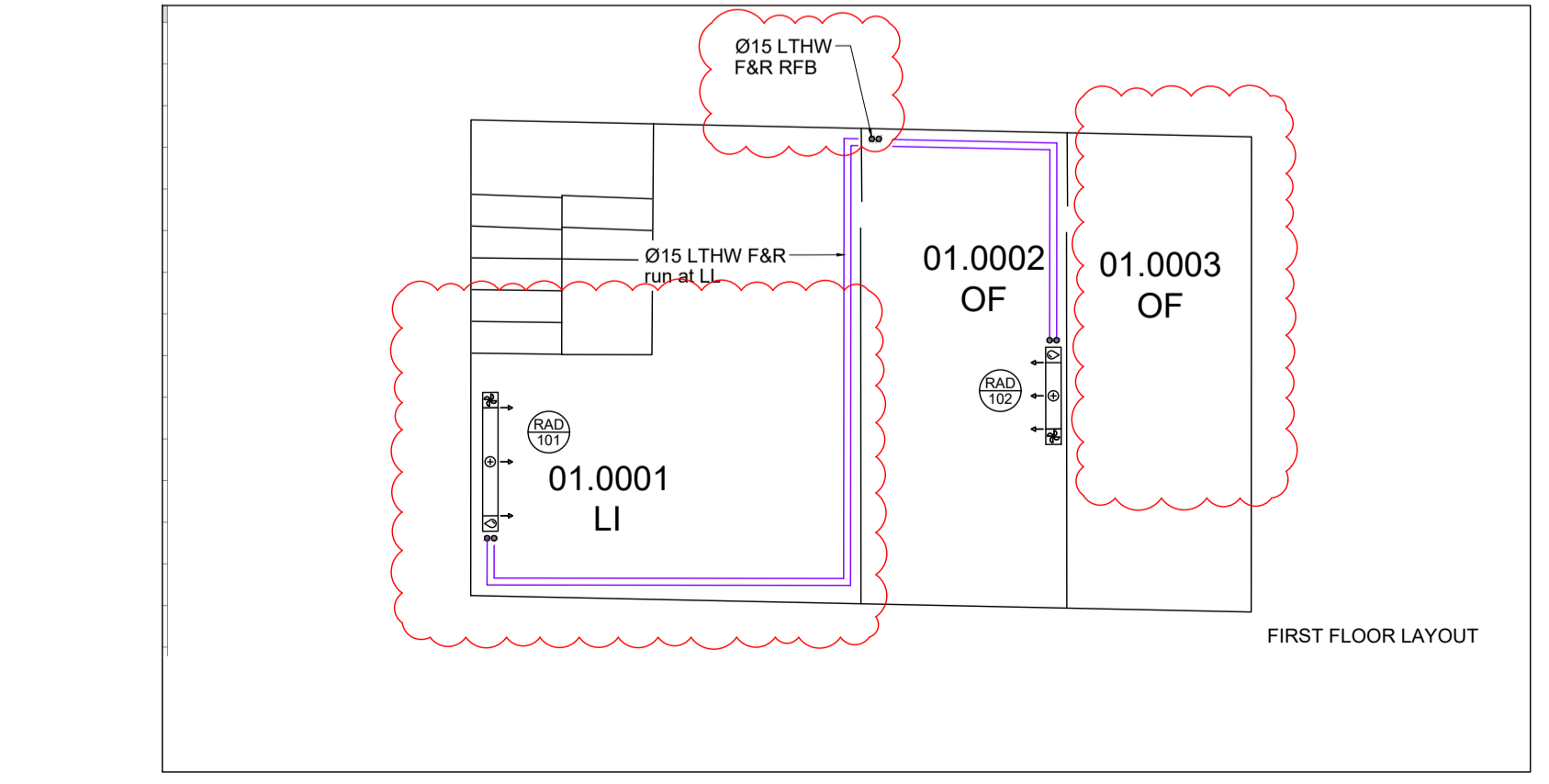
Existing DHWS Cylinder



Existing Boiler



External Courtyard for new ASHP



Radiator / Heat Emitter Schedule											
Reference	Area Served / Location	Manufacturer	Model	Type	Width (mm)	Height (mm)	Output (W)	Corrected (W)	LTHW (kg/s)	TRV	LSV
001	Staff GD0015	Jaga	Strada Hybrid	11	1100	650	2582	1472	0.035	✓	✓
002	Staff GD0017	Jaga	Strada Hybrid	11	1100	650	2582	1472	0.035	✓	✓
003	Corridor GD0014	Jaga	Strada Hybrid	11	1400	650	3333	1900	0.045	✓	✓
004	Classroom GD0007	Jaga	Strada Hybrid	11	1800	650	4376	2494	0.059	✓	✓
005	Classroom GD0007	Jaga	Strada Hybrid	11	1800	650	4376	2494	0.059	✓	✓
006	Classroom GD0007	Jaga	Strada Hybrid	11	1800	650	4376	2494	0.059	✓	✓
007	Classroom GD0004	Jaga	Strada Hybrid	11	1800	650	4376	2494	0.059	✓	✓
008	Classroom GD0004	Jaga	Strada Hybrid	11	1800	650	4376	2494	0.059	✓	✓
009	Classroom GD0004	Jaga	Strada Hybrid	11	1800	650	4376	2494	0.059	✓	✓
010	Corridor GD0003	Jaga	Strada Hybrid	21	600	650	5302	3022	0.072	✓	✓
011	Corridor GD0002	Jaga	Strada Hybrid	11	1100	650	2582	1472	0.035	✓	✓
012	Office GD0001	Jaga	Strada Hybrid	16	1200	350	3472	1979	0.047	✓	✓
013	Classroom GD0039	Jaga	Strada Hybrid	11	1600	650	3835	2186	0.052	✓	✓
014	Classroom GD0039	Jaga	Strada Hybrid	11	1600	650	3835	2186	0.052	✓	✓
015	Classroom GD0039	Jaga	Strada Hybrid	11	1600	650	3835	2186	0.052	✓	✓
016	Classroom GD0034	Jaga	Strada Hybrid	11	1400	650	3333	1900	0.045	✓	✓
017	Classroom GD0034	Jaga	Strada Hybrid	11	1400	650	3333	1900	0.045	✓	✓
018	Classroom GD0034	Jaga	Strada Hybrid	16	1200	350	3474	1980	0.047	✓	✓
019	Corridor GD0024	Jaga	Strada Hybrid	11	1400	650	3333	1900	0.045	✓	✓
020	Cloakroom GD0030	Jaga	Strada Hybrid	11	800	650	1770	1009	0.024	✓	✓
021	Cloakroom GD0050	Jaga	Strada Hybrid	11	1000	650	2301	1312	0.031	✓	✓
022	Corridor GD0029	Jaga	Strada Hybrid	11	800	650	1770	1009	0.024	✓	✓
023	Classroom GD0036	Jaga	Strada Hybrid	11	1200	650	2822	1609	0.039	✓	✓
024	Classroom GD0033	Jaga	Strada Hybrid	11	1000	650	2301	1312	0.031	✓	✓
025	Classroom GD0031	Jaga	Strada Hybrid	11	2000	650	4821	2758	0.066	✓	✓
026	Classroom GD0031	Jaga	Strada Hybrid	11	2000	650	4821	2758	0.066	✓	✓
027	Classroom GD0031	Jaga	Strada Hybrid	11	2000	650	4821	2758	0.066	✓	✓
028	Hall	Jaga	Strada Hybrid	16	2000	350	5971	3403	0.081	✓	✓
029	Hall	Jaga	Strada Hybrid	16	2000	350	5971	3403	0.081	✓	✓
030	Hall	Jaga	Strada Hybrid	16	2000	350	5971	3403	0.081	✓	✓
031	Hall	Jaga	Strada Hybrid	21	1400	500	5302	3022	0.072	✓	✓
032	Hall	Jaga	Strada Hybrid	21	1400	500	5302	3022	0.072	✓	✓
033	Kitchen	Jaga	Strada Hybrid	16	1000	500	2817	1606	0.038	✓	✓
034	Kitchen	Jaga	Strada Hybrid	16	1000	500	2817	1606	0.038	✓	✓
101	Library	Jaga	Strada Hybrid	11	2000	650	4821	2758	0.066	✓	✓
102	Office	Jaga	Strada Hybrid	11	1400	650	3333	1900	0.045	✓	✓
103	Corridor	Jaga	Strada Hybrid	11	1400	650	3333	1900	0.045	✓	✓

**Notes**

Bailey Partnership is the trading name of Bailey Partnership (Consultants) LLP, a limited liability partnership registered in England and Wales No. - OC420278.

This drawing is copyright and owned by Bailey Partnership (Consultants) LLP, and is for use on this project and site only unless contractually stated otherwise.

DO NOT SCALE from this drawing (printed or electronic versions). Unless otherwise stated all dimensions are given in millimeters and shall be checked on site by the contractors.

All other design team elements, where indicated, have been imported from the consultant's drawings and reference should be made to the individual consultant's drawings for exact setting out, size and type of component.

Discrepancies and / or ambiguities within this drawing, between it and information given elsewhere, must be reported immediately to the engineers for clarification before proceeding.

All works are to be carried out in accordance with the latest British Standards and Codes of Practice unless specifically directed otherwise in the specification.

Responsibility for the reproduction of this drawing in paper form, or if issued in electronic format, lies with the recipient to check that all information has been replicated in full and is correct when compared to the original paper or electronic image. Graphical representations of equipment on this drawing have been co-ordinated, but are approximations only. Please refer to the Specifications and / or details for actual sizes and / or specific contractor construction information.

Ordnance Survey Paper Map Copying License number: 40006119

This original document is issued for the purpose indicated below and contains information of confidential nature. Further copies and circulation will be strictly in accordance with the confidentiality agreement under the contract.

© Bailey Partnership (Consultants) LLP. This document is issued for the party which commissioned it and for specific purposes connected with the captioned project only. It should not be relied upon by any other party or used for any other purposes. We accept no responsibility for the consequences of this document being relied upon by any other party, or being used for any other purpose, or containing any error or omission which is due to an error or omission in data supplied to us by others.

**SAFETY, HEALTH AND ENVIRONMENTAL INFORMATION**

Refer to the relevant Construction (Design and Management) documentation where applicable.

It is assumed that all works on this drawing will be carried out by a competent contractor, working where appropriate to an approved method statement.

**Project Notes**

The Contractor shall ascertain the nature of the site, access thereto and all local conditions and restrictions likely to affect the installation. No claim will be considered on the grounds of the lack of site knowledge.

The Contractor shall be responsible for the final coordination of all new and existing services, with the building structure, architecture and fixed furniture and equipment.

The Contractor shall allow for all required changes in height and direction not identified on the drawing and the final setting out of all plant, equipment and services shall be agreed on site with the Engineer.

The Contractor shall be responsible for any temporary access or lifting equipment required to carry out the works.

xx	Revision Cloud Reference (A1)		
P02	Radiator Changes	DJ/BV/BV	27/07/23
P01	Tender Issue	CH/BV/BV	16/11/22
Rev	Description	By / Chk'd / App'd	Date



Client  
Link Academy Trust

Project  
Morchard Bishop Heating CIF BID

Drawing Title  
Mechanical Engineering Services Heating Layout

Suitability - Status Code	Suitability - Purpose of Issue	
S3	Preliminary	
Project No.	Scale @ A1	Revision
34235	1:100	P02

A1 Drawing Identifier  
Project Code - Function - Space - Form - Discipline - Number  
34235-BPC-XX-ZZ-D-M-5601  
www.baileypartnership.co.uk