

Do not scale from this drawing.

SAFETY HEALTH AND ENVIRONMENTAL INFORMATION

IN ADDITION TO THE HAZARD/RISKS NORMALLY ASSOCIATED WITH THE TYPES OF WORK DETAILED ON THIS DRAWING, NOTE THE FOLLOWING RISKS AND INFORMATION.

RISKS LISTED HERE ARE NOT EXHAUSTIVE. REFER TO DESIGN ASSESSMENT FORM NO.

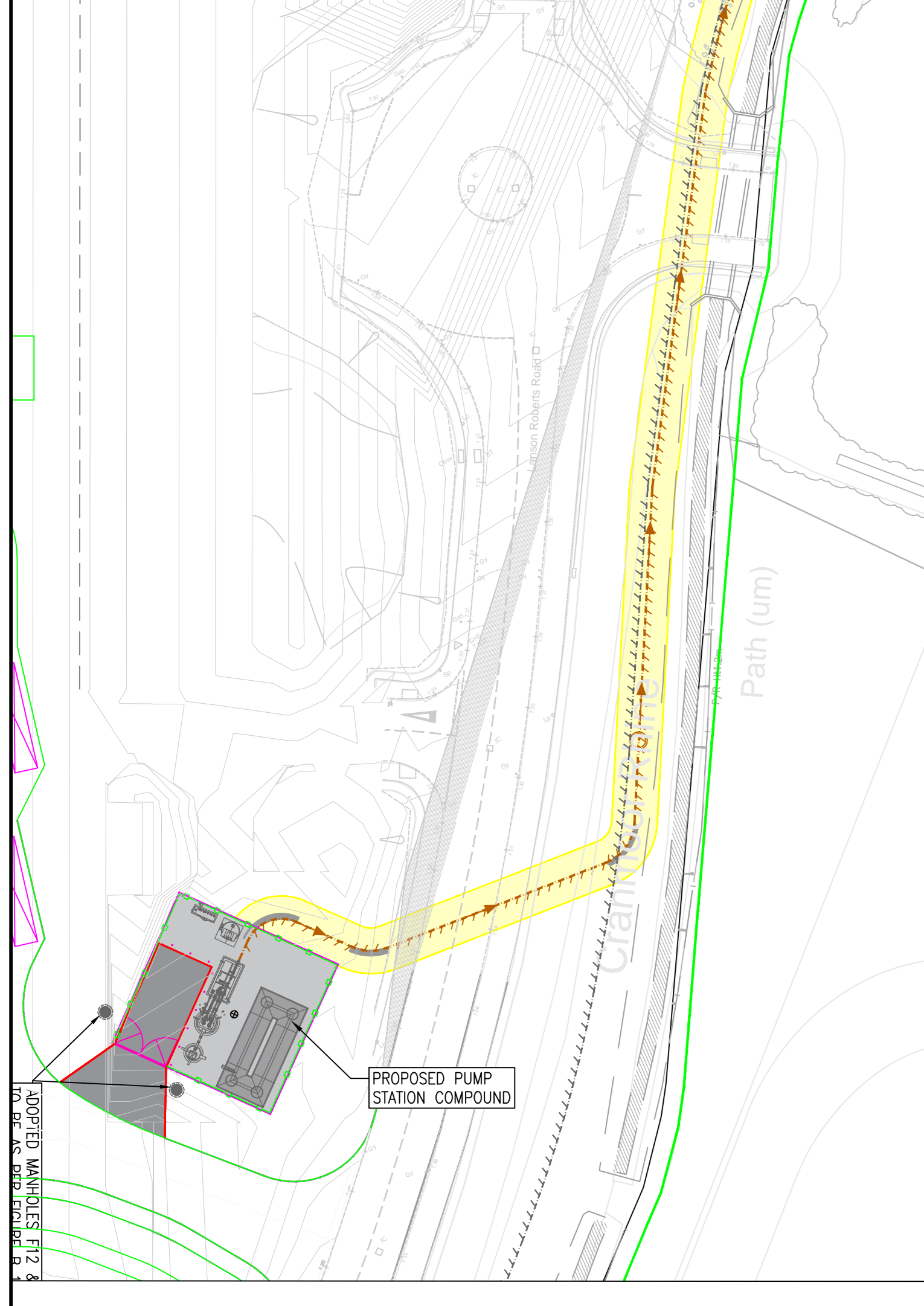
CONSTRUCTION

DEMOLITION

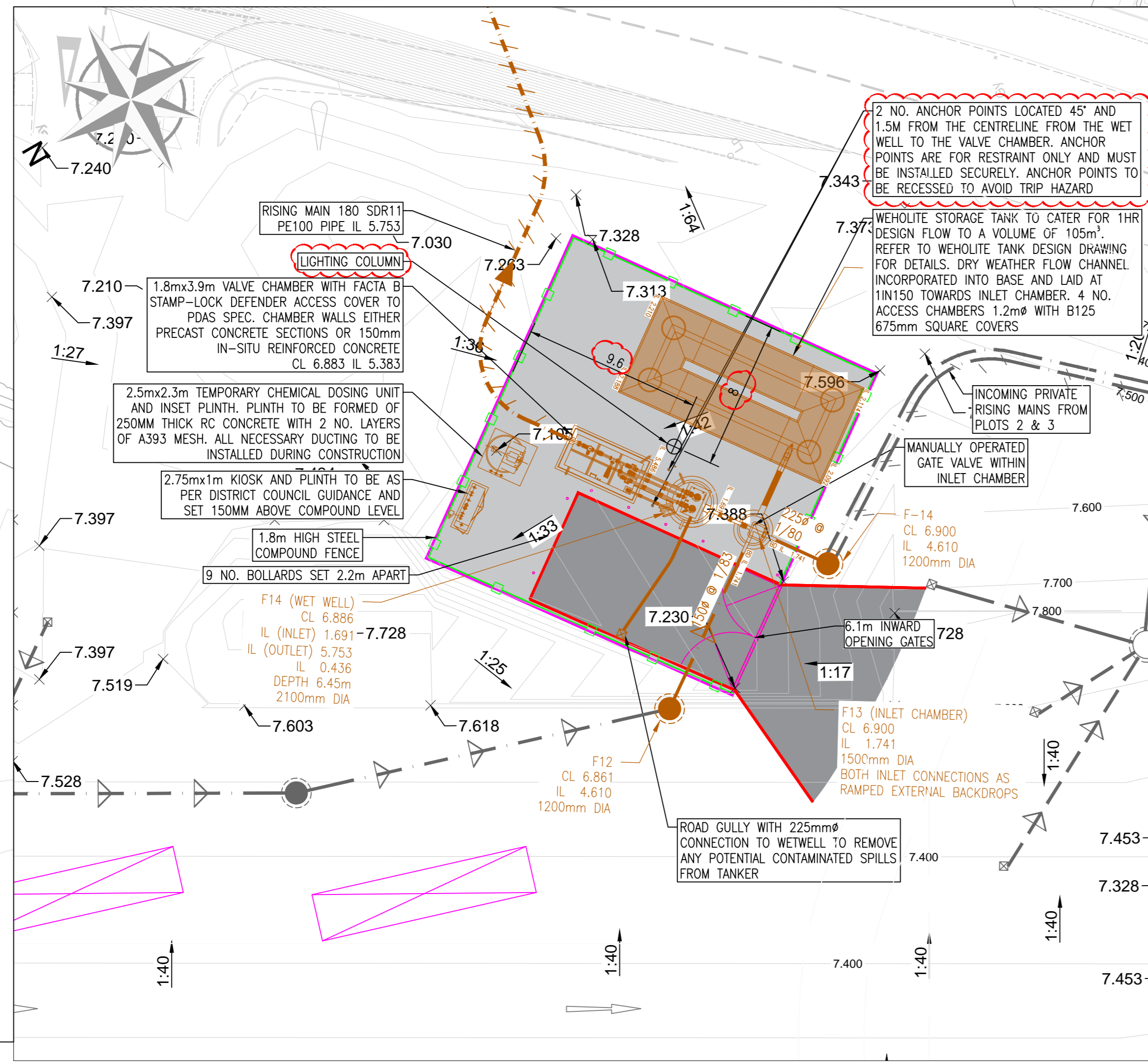
FOR INFORMATION RELATING TO USE, CLEANING AND MAINTENANCE SEE THE HEALTH AND SAFETY FILE

IT IS ASSUMED THAT ALL WORKS WILL BE CARRIED OUT BY A COMPETENT CONTRACTOR WORKING, WHERE APPROPRIATE, TO AN APPROVED METHOD STATEMENT.

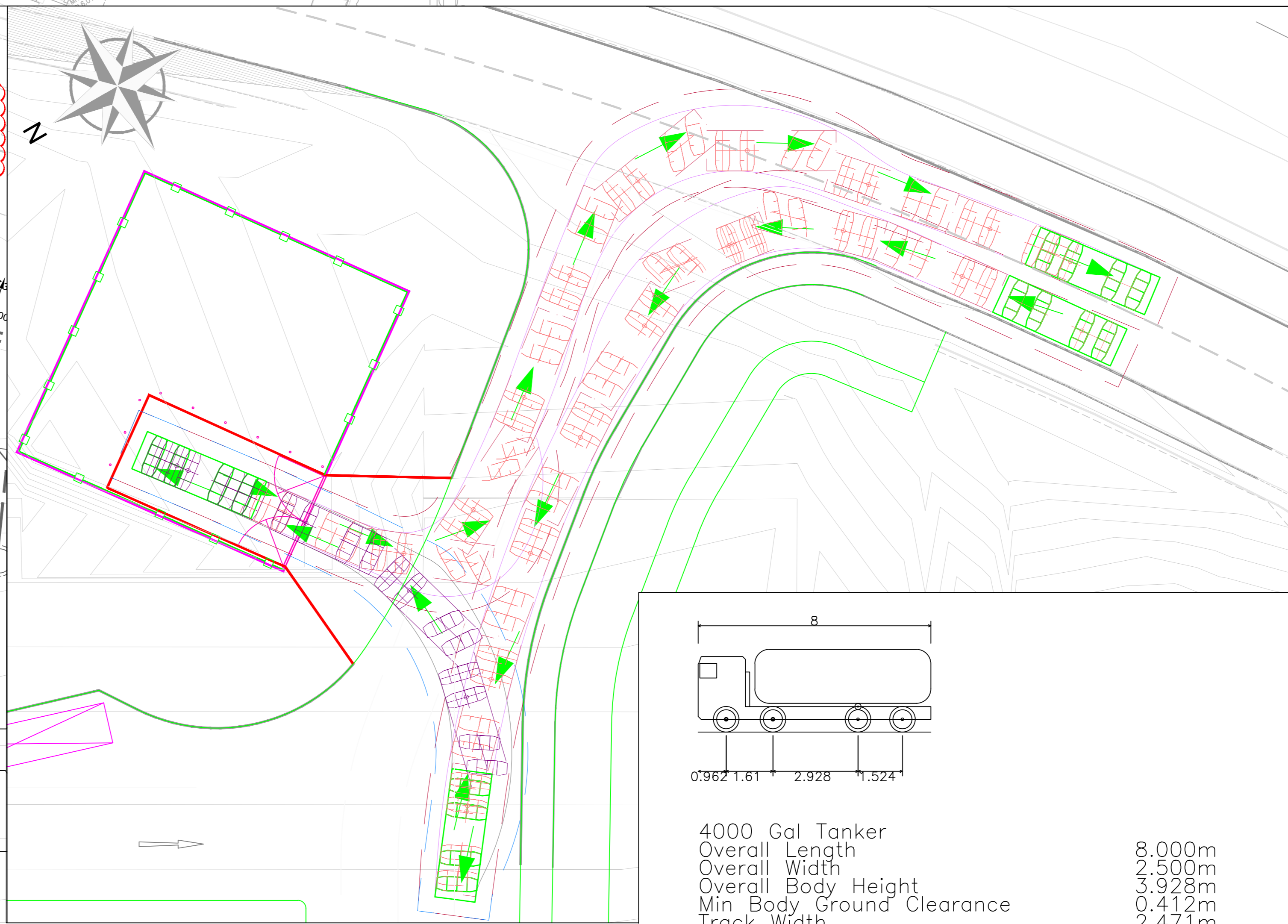
RISING MAIN & PUMP STATION DETAILS	
Incoming invert level	1.741m AOD
Incoming peak flow rate	Plot 4 : 7.74 l/s ; Plot 2 & 3 : TBC
Rising main delivery invert level	5.753 A.O.D
Ground level at pump station	6.886m AOD
Sump invert level	0.436m AOD
Static head	REFER TO PDAS DETAILS
Total head	REFER TO PDAS DETAILS
Rising main total length	666.55 m
Rising main diameter	180 SDR11 PE100
Pump rate	Restricted to 14.60 l/s.
Required storage	105 m ³
Pump power supply	REFER TO PDAS DETAILS



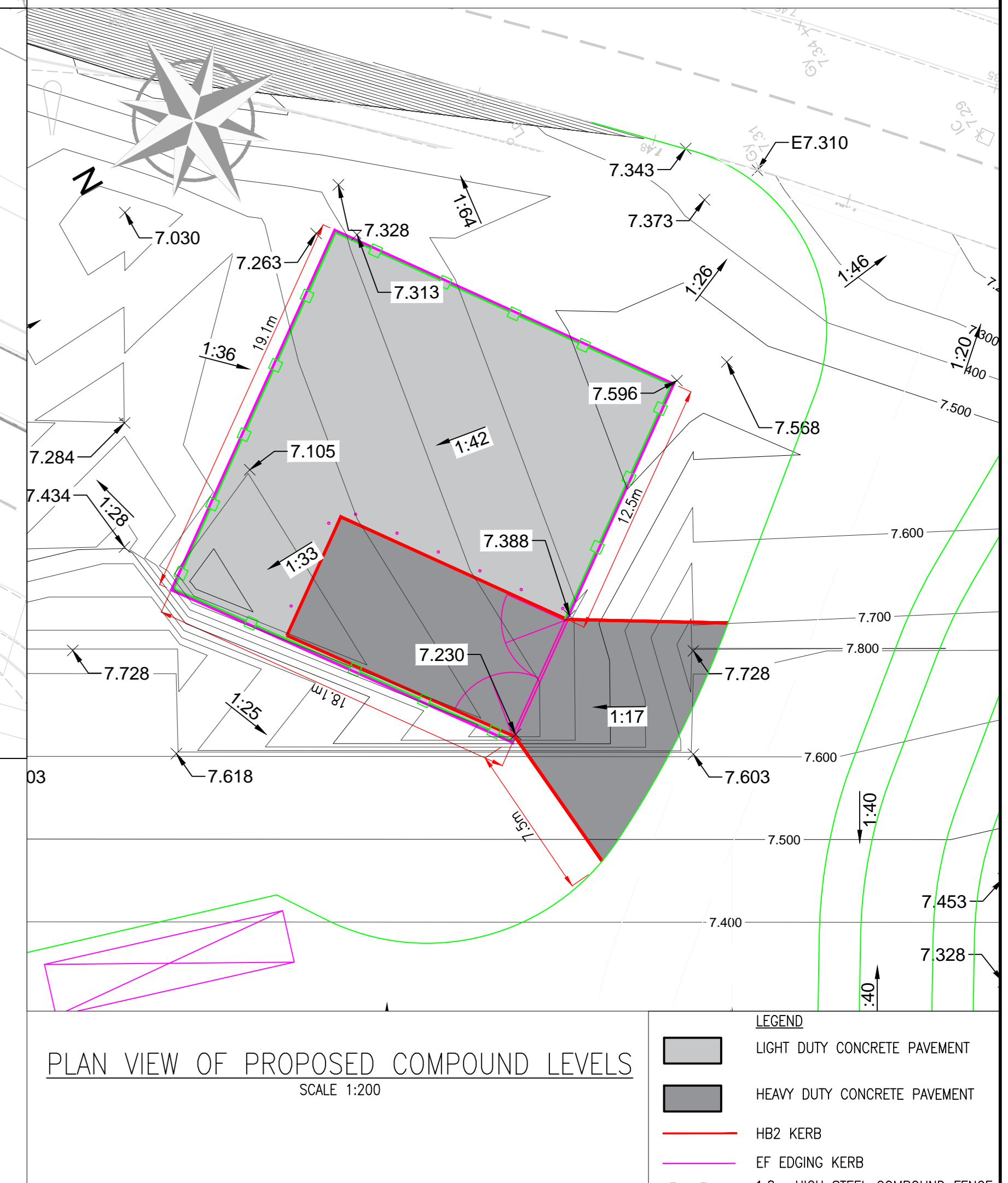
LOCATION PLAN SHOWING ROUTE OF RISING MAIN
SCALE: 1:500



PLAN VIEW OF ADOPTABLE FOUL WATER PUMP STATION
SCALE 1:200



4000 Gal Tanker
Overall Length 8.000m
Overall Width 2.500m
Overall Body Height 3.328m
Min Body Ground Clearance 0.412m
Track Width 2.471m
Lock to lock time 6.00s
Kerb to Kerb Turning Radius 7.900m



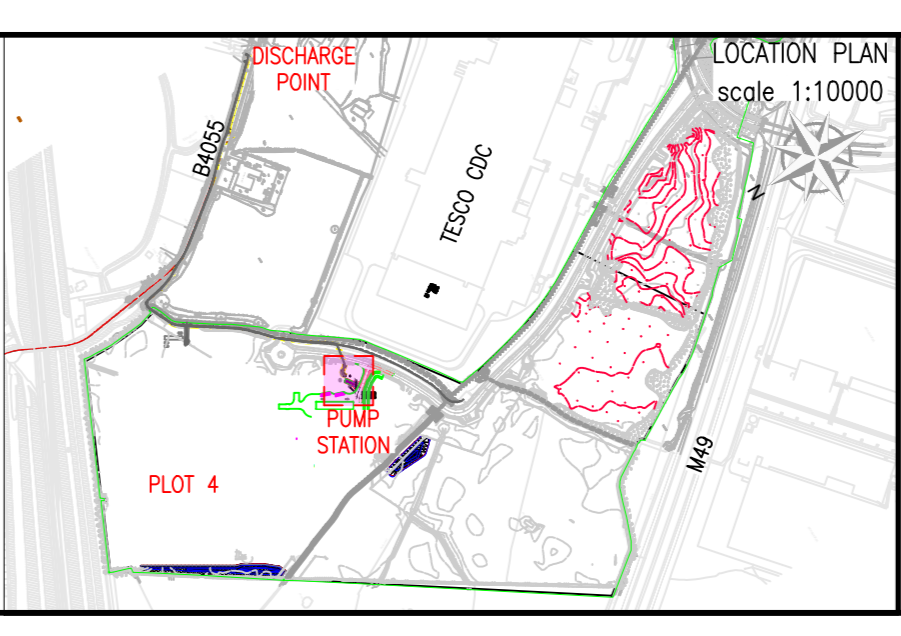
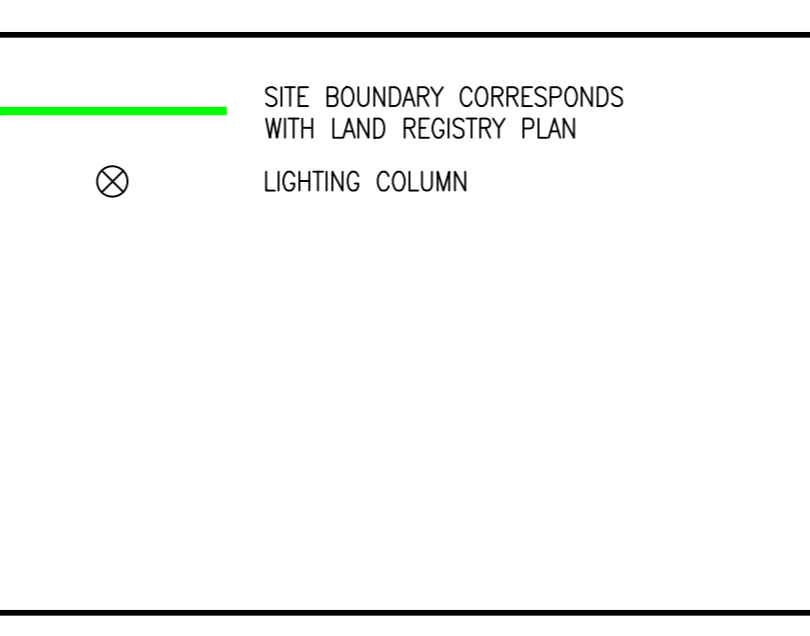
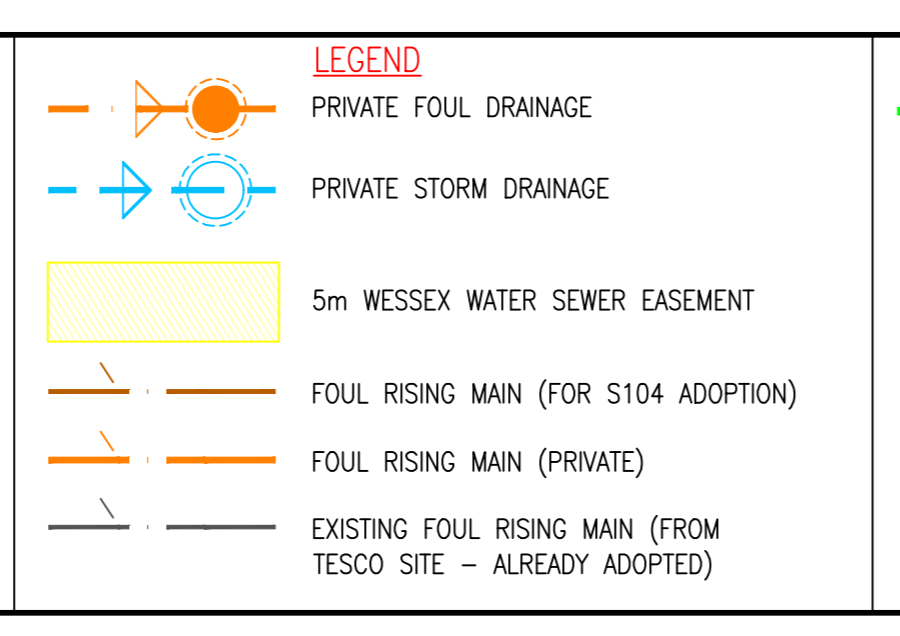
PLAN VIEW OF PROPOSED COMPOUND LEVELS
SCALE 1:200

LEGEND

- Light duty concrete pavement
- Heavy duty concrete pavement
- HB2 KERB
- EF EDGING KERB
- 1.8m HIGH STEEL COMPOUND FENCE

Rev.	Date	Description	Drawn	Checked	Approved
P08	30/03/22	UPDATED TO INCORPORATE WW COMMENTS	DH	DT	DT
P07	09/01/22	UPDATED ACCORDING TO WW COMMENTS	TA	DT	DT
P06	28/11/22	UPDATED ACCORDING TO WW COMMENTS	TA	DT	DT
P05	09/09/22	RISING MAIN ROUTE ALTERED TO AVOID BRIDGE	DH	DT	DT
P04	01/03/22	COMPOUND LAYOUT CO-ORDINATED WITH PDAS PROPOSALS. ISSUED FOR S104 APPROVAL	SS	BH	DT
P03	15/12/21	UPDATED ACCORDING TO THE COMMENTS	SS	BH	DT

- Notes:
- THIS DRAWING IS TO BE READ IN CONJUNCTION WITH ALL OTHER FAIRHURST DRAWINGS AND SPECIFICATIONS FOR THIS PROJECT & THE TOPOGRAPHICAL SURVEY BY OREDMATCH REF 3838_L_REV00.
 - CONTRACTOR IS TO CHECK AND CONFIRM ALL DIMENSIONS ON SITE PRIOR TO COMMENCING WORKS
 - ANY DISCREPANCIES BETWEEN THE ENGINEERS DRAWINGS AND SITE CONDITIONS TO BE REPORTED TO THE ENGINEER IMMEDIATELY AND INSTRUCTIONS RECEIVED BEFORE PROCEEDING
 - ALL ADOPTABLE FEATURES HAS BEEN DESIGNED ACCORDING TO - SSSI/SSSI (SECTOR GUIDANCE) APPENDIX C - DESIGN AND CONSTRUCTION GUIDANCE AND WESSEX WATER PUMPING STATION AGREEMENT.
 - MARKER TAPE TO BE INSTALLED 300mm ABOVE PROPOSED FOUL RISING MAIN. REFER TO CONSTRUCTION DETAILS
 - ALL SERVICES WITHIN THE COMPOUND ARE TO BE DUCTED



Project Title: **MATRIX 49 AVONMOUTH**

Drawing Title: **S104 -WESSEX WATER FOUL WATER PUMPING STATION AND RISING MAIN GENERAL ARRANGEMENTS**

FAIRHURST

Oak Road, Redditch, Warwickshire, B97 0JH
Tel: 01923 210 400 Fax: 0844 381 4412

Subsidiary: Fairhurst Ltd
138977

Scale: 1:250
Date: 21/09/21
Tender/For Approval

Drawn: SS
Checked: LC
Approved: DT

Date: 21/09/21
Date: 21/09/21
Date: 21/09/21

Project No: BRS8-FRH-XX-EX-DR-CVL-2030
Revision: P08