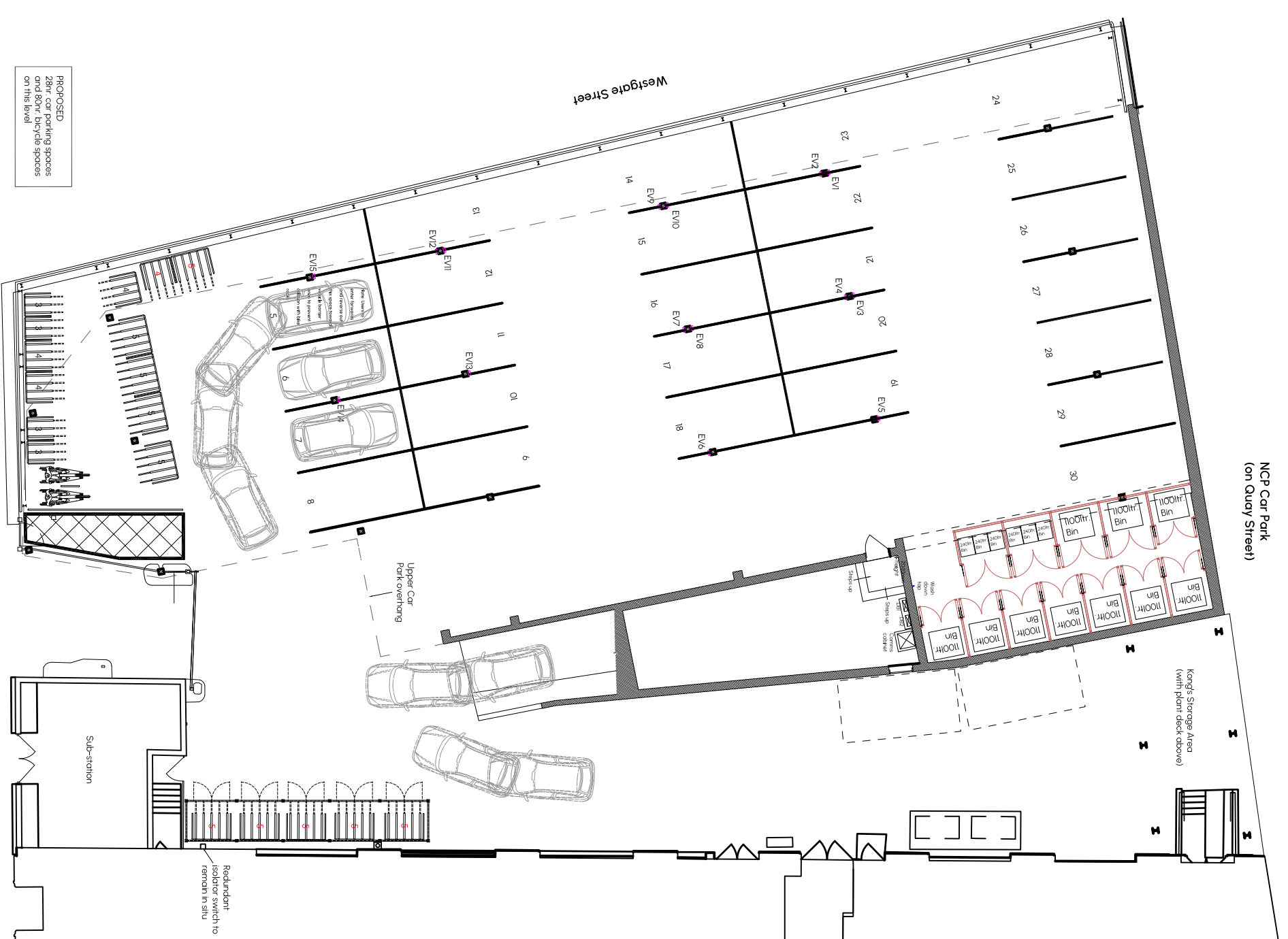
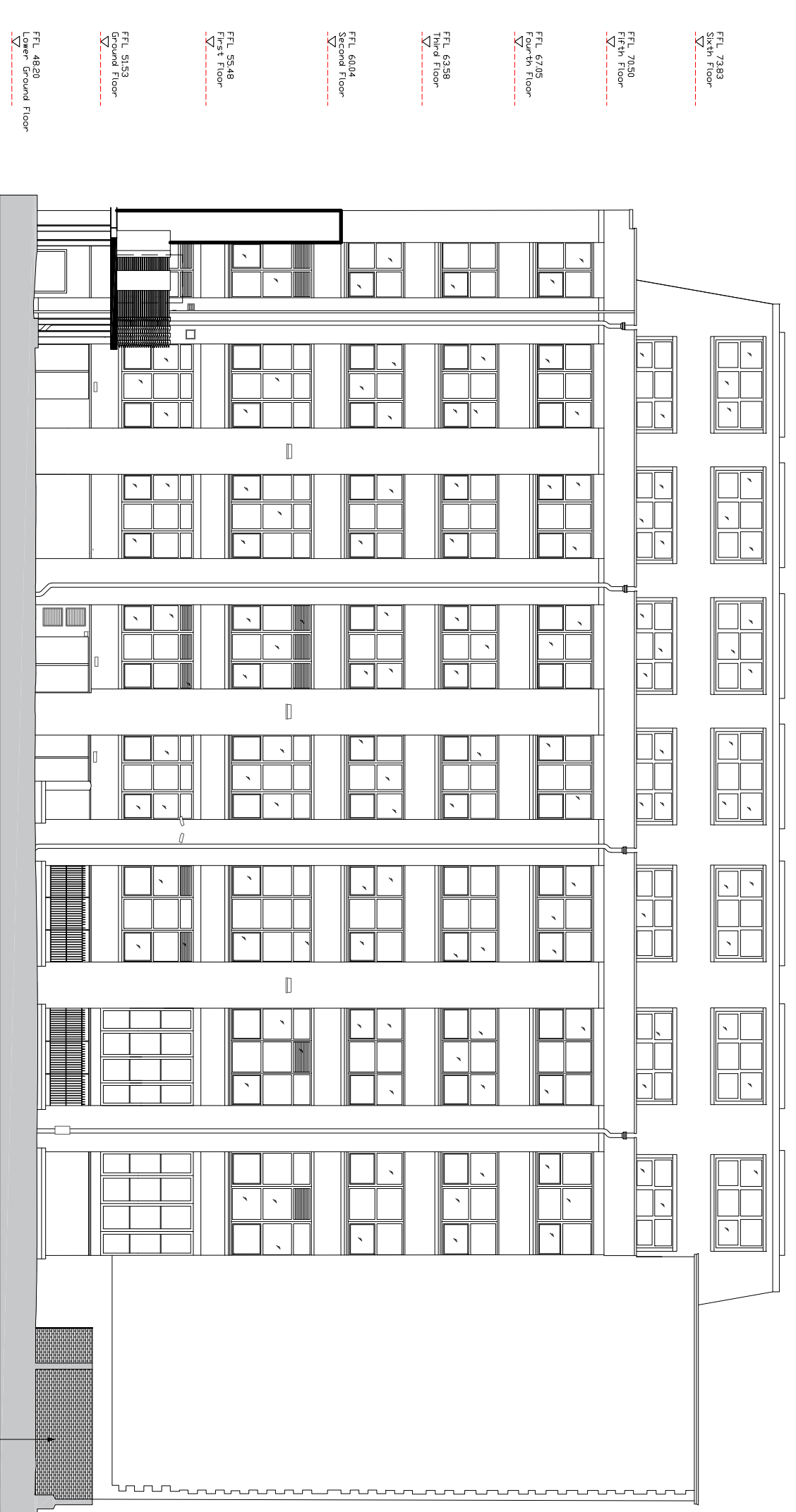


Car Park Plan View - Existing
Scale 1:200@A1

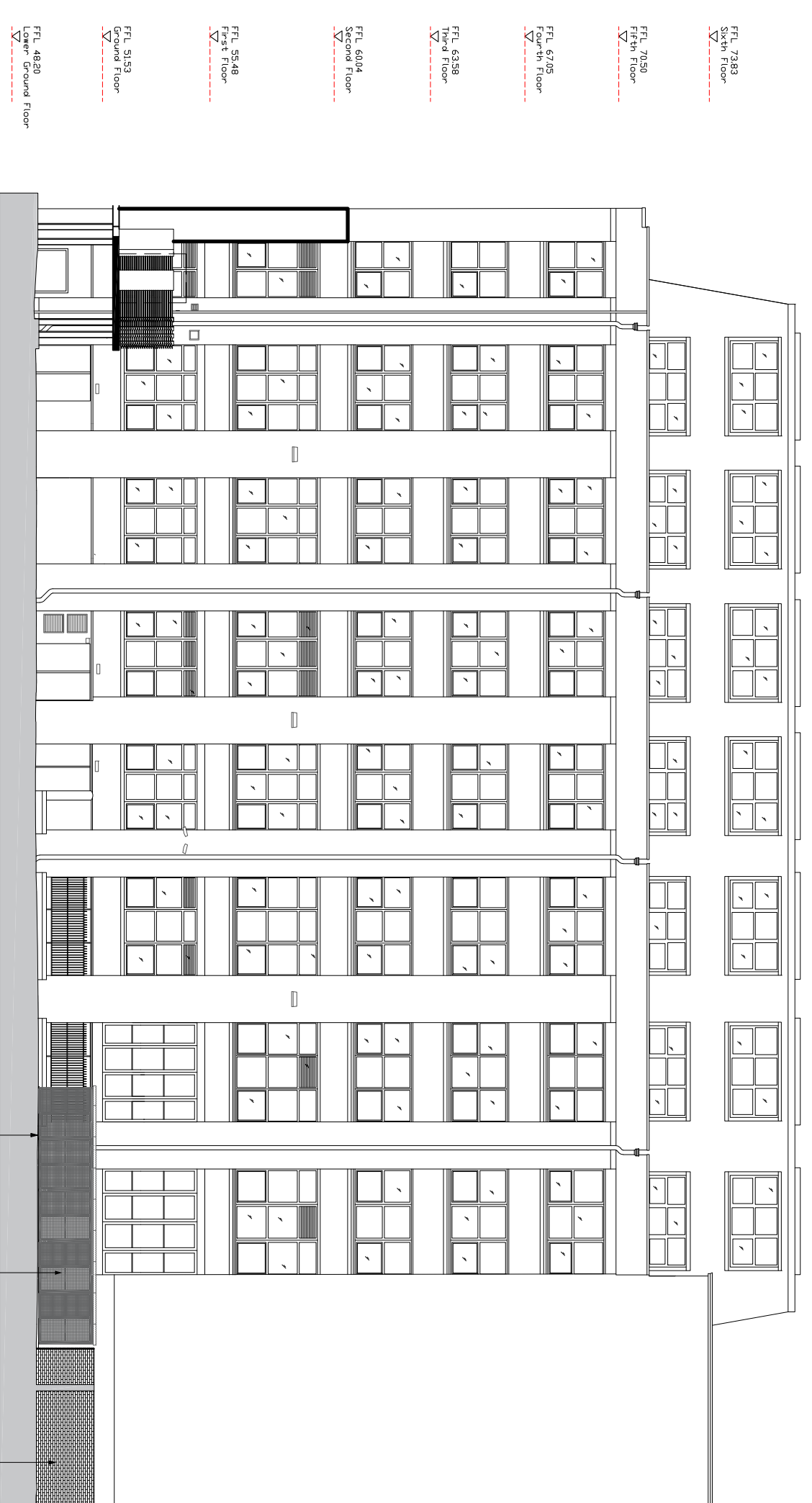


Car Park Plan View - Proposed
Scale 1:200@A1

Image showing enclosure type (Hodge House design would differ as would be single sided bike racks only with gates along front elevation)



Westgate Street Elevation - Existing
Scale 1:200@A1



Westgate Street Elevation - Proposed
Scale 1:200@A1



Scale bar
Distances in metres

Suitability key:
WIP - Work in Progress*
(Friendly Use Only)

SHARED
SI - Fit for co-ordination
S2 - Fit for information
S3 - Fit for internal review and comment
S4 - Fit for construction approval

DOCUMENTATION
D1 - Fit for costing
D2 - Fit for tender
D3 - Fit for contractor design
D4 - Fit for manufacturer/procurement

ARCHIVE
A8 - As Built

Client: Legal and General
Hodge House 14-16 St Mary Street,
Cardiff, CF10 1DY
Title: Car Park, Bicycle Enclosure
Scale: 1:200 @A1
Date created: 14.08.23
Revision: PO2
Checked by: HB

Drawing status: FOR INFORMATION
Suitability: S2
Drawing number: P9000-PAR-XX-00-DR-1-900001

All dimensions are in millimetres unless otherwise stated

Paramount
Cardiff | Summit House, Royal Canal, St. Malins, Cardiff CF3 0LW
Bristol | Dock House, Water Road, Bristol BS1 4SB
029 2085 9800 | paramountinteriors.com
Copyright | This drawing is the property of Paramount Office Interiors Ltd