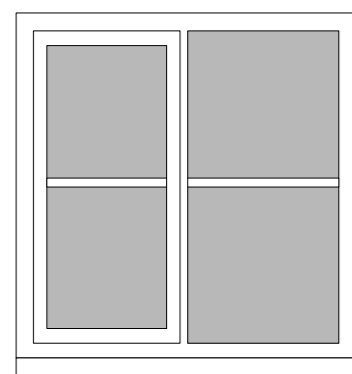
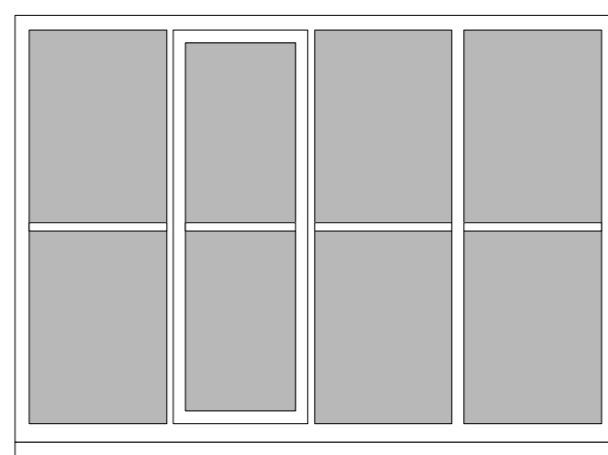


KEY / NOTES



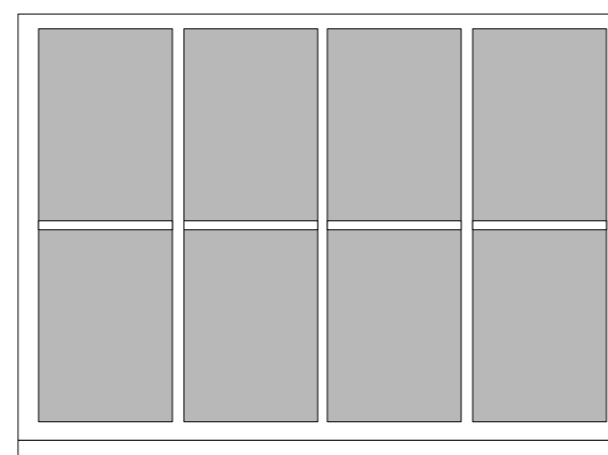
W001
 kitchen
 timber window to timberframed part of house,
 double window with 1no fixed, 1no. side hung opener,
 timber external sill, timber lintel.

Proposed works:
 retain and refurbish as required,
 secondary glazing to inside.



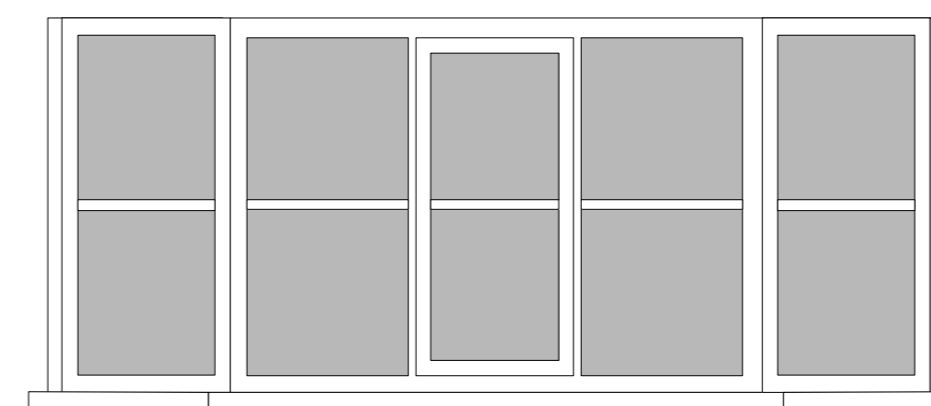
W002
 dining room
 timber window to timberframed part of house,
 4-part window with 3no fixed, 1no. side hung opener,
 timber external sill, timber lintel.

Proposed works:
 retain and refurbish as required,
 secondary glazing to inside.



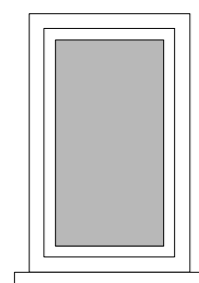
W003
 sitting room
 timber window to timberframed part of house,
 4-part window, no opening elements,
 timber external sill, timber lintel.

Proposed works:
 retain and refurbish as required,
 secondary glazing to inside.



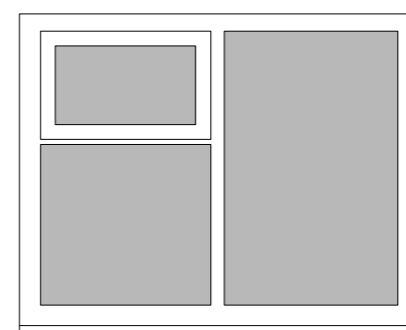
W004
 study
 timber bay window to timberframed part of house (rendered section),
 5-part window with central side hung opener,
 timber external sill, assumed timber lintel behind render.

Proposed works:
 retain and refurbish as required,
 secondary glazing to inside.



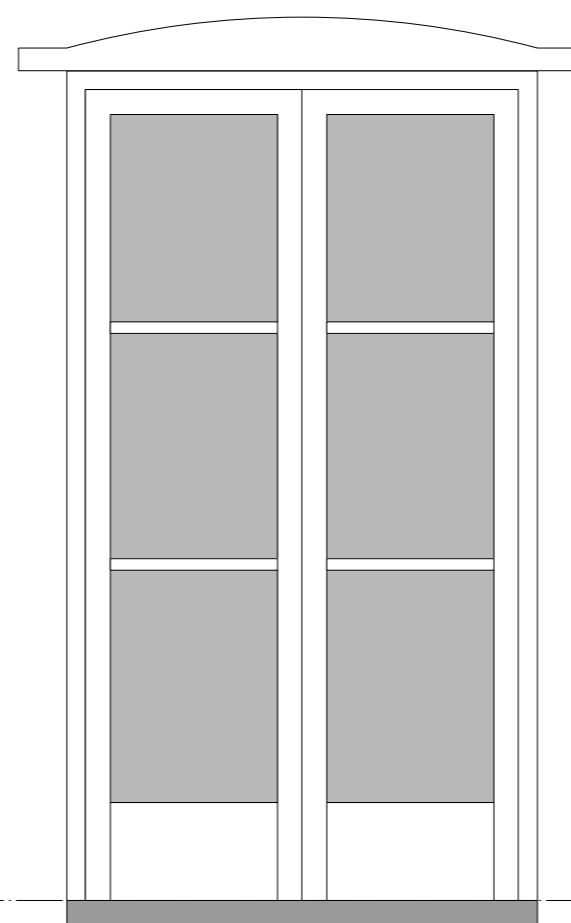
W005
 WC
 timber window to single storey rear extension of house,
 single, openable window,
 frosted glass,
 timber external sill, lintel tbc.

Proposed works:
 retain and refurbish as required,
 secondary glazing to inside.



W006
 hallway
 timber window to brickwork rear of house,
 3-part window with 2no fixed parts and 1no top hung part,
 frosted glass
 timber external sill, stone lintel tbc.

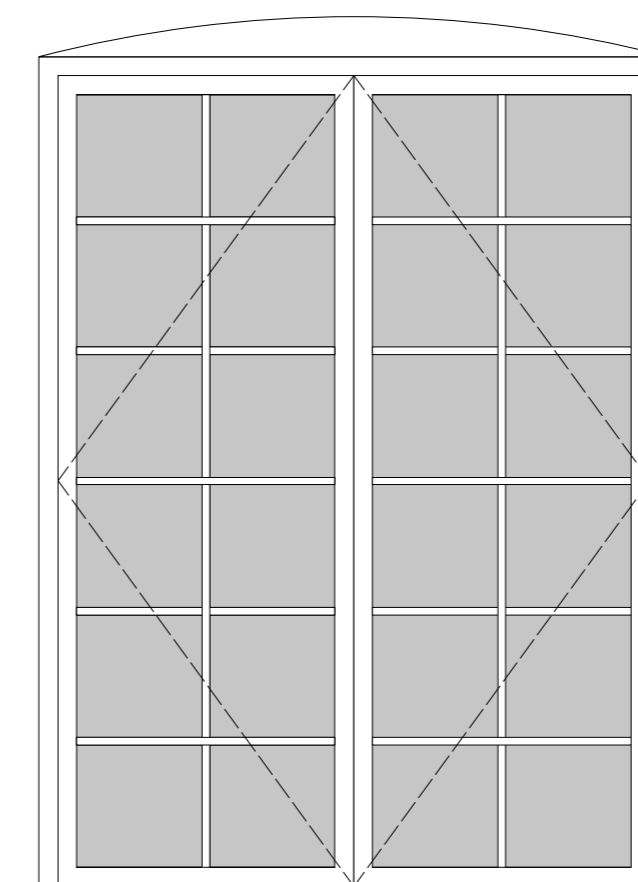
Proposed works:
 retain and refurbish as required,
 secondary glazing to inside.



W007
 entrance hall
 timber french door set to brickwork rear of house,
 stone external sill, timber lintel below brickwork arch lintel.

Has internal timber shutters recessed in reveal.

Proposed works:
 retain and refurbish as required.

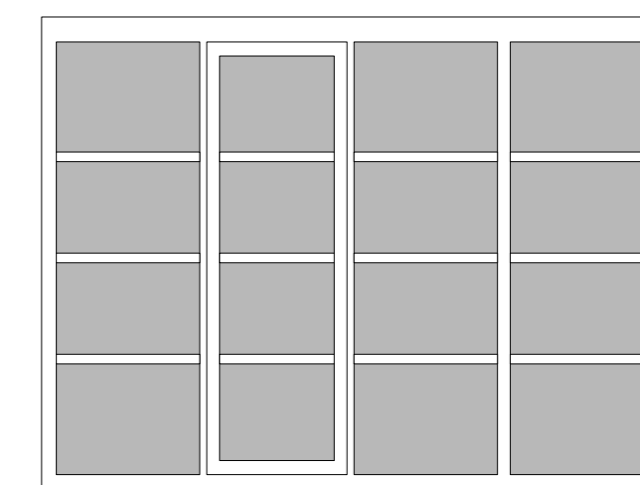


W008 - proposed french door

W008
 kitchen
 timber window to brickwork rear of house,
 4-part window with 3no fixed parts and 1no side hung opener,
 timber external sill, brickwork arch lintel (infilled with brickwork).

Has internal timber shutters recessed in reveal.

Proposed works:
 To be replaced with new french door set to suit style of existing doors and windows.



W008 - existing window to be replaced

REV	DESCRIPTION	DATE
-----	-------------	------

RAISE
 ARCHITECTS

PROJECT

Proposed alterations to the Farmhouse at Churton Hall Farm, Churton, Chester CH3 6LR

DRAWING

Window schedules 01
 Residential unit 01
 Ground floor

SCALE	DATE	DRAWN BY	CHECKED BY
1:20@A2	JUN 21	AB	AF
DRG N°	REV		

439-PL/FH-10 -