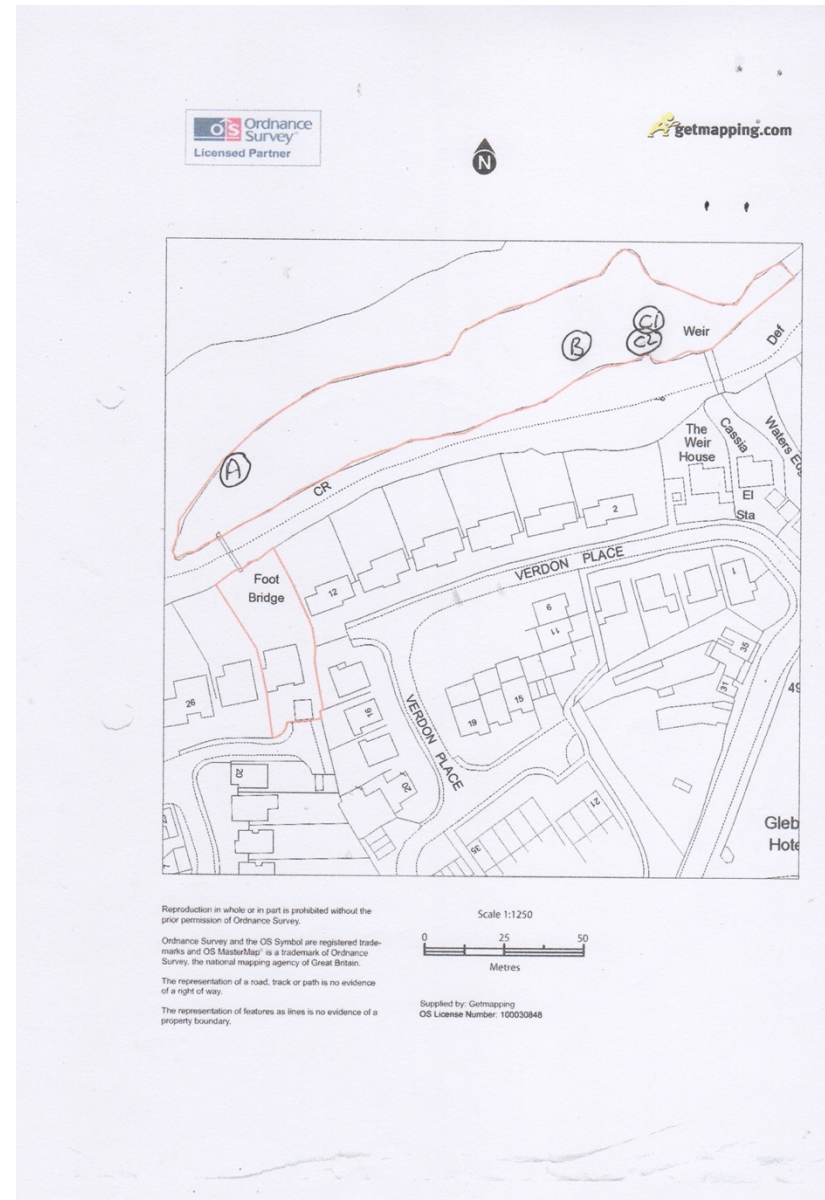


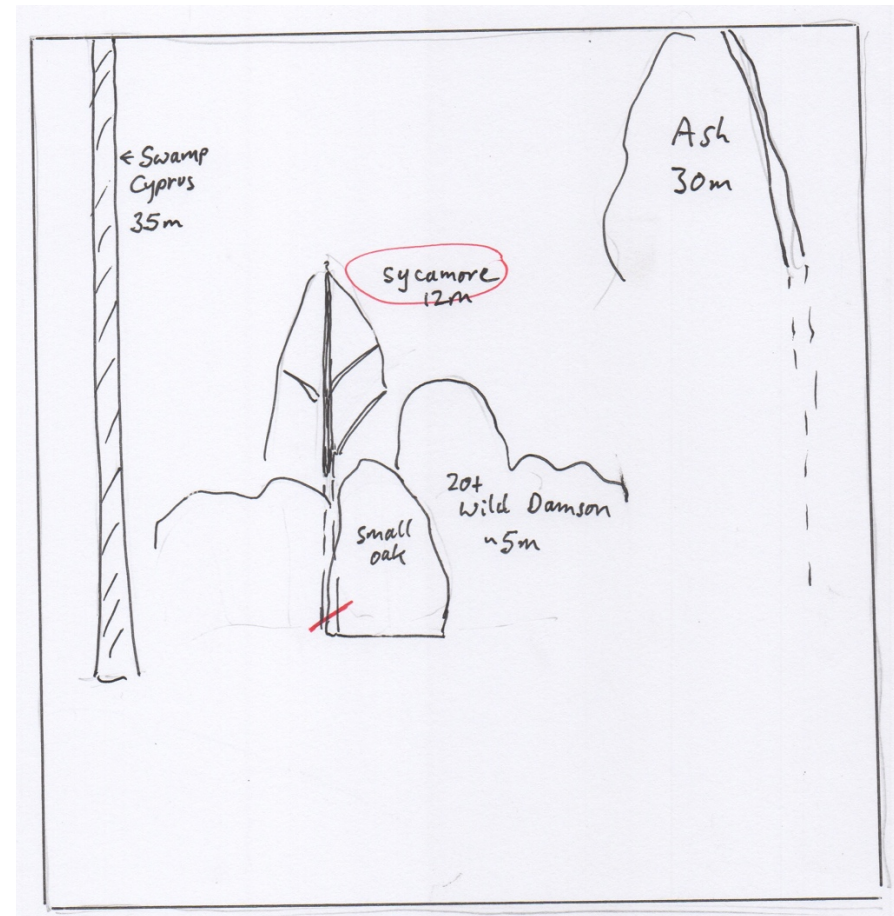
## Tree Application 23 Sep 23

At 22 Keytes Lane Barford  
CV35 8EP

### General remarks.

The island which forms part of the garden of 22 Keytes Lane Barford contains around 200 trees, with willow and sycamore the most numerous, and with specimens of weeping willow, ash, yew, hornbeam, hazel, larch and horse chestnut all over 10 metres. We aim to maintain it as a largely tree covered area, with spaces to let the sun in. The present application is to thin out some of the smaller and less interesting sycamores, and to remove a diseased horse chestnut.





Tree A. Sycamore 12 metres. To Do: remove Sycamore.  
Notes: The area is dominated by the mature Swamp Cyprus and ash trees. The space between those two has a lower growth of wild Damson, in which the Sycamore – rather mutilated by squirrel damage – has no amenity value and detracts from the larger trees.



Tree B Horse Chestnut

To Do: Remove Tree

Notes: This tree shows signs of fungus attack (see closer picture above) and is likely to die soon. It is surrounded by willow and sycamore trees all taller than it, and so has little amenity value when viewed from any distance. We are trying to encourage more wild flowers to grow on this part of the island, and wish to reduce the excessive shade which this tree produces





Trees C1, C2 Sycamore

To Do: Remove 2 trees

Notes: This clump of 15 Sycamores is crowded. The work is to remove two of the smaller trees to leave room for the others.

