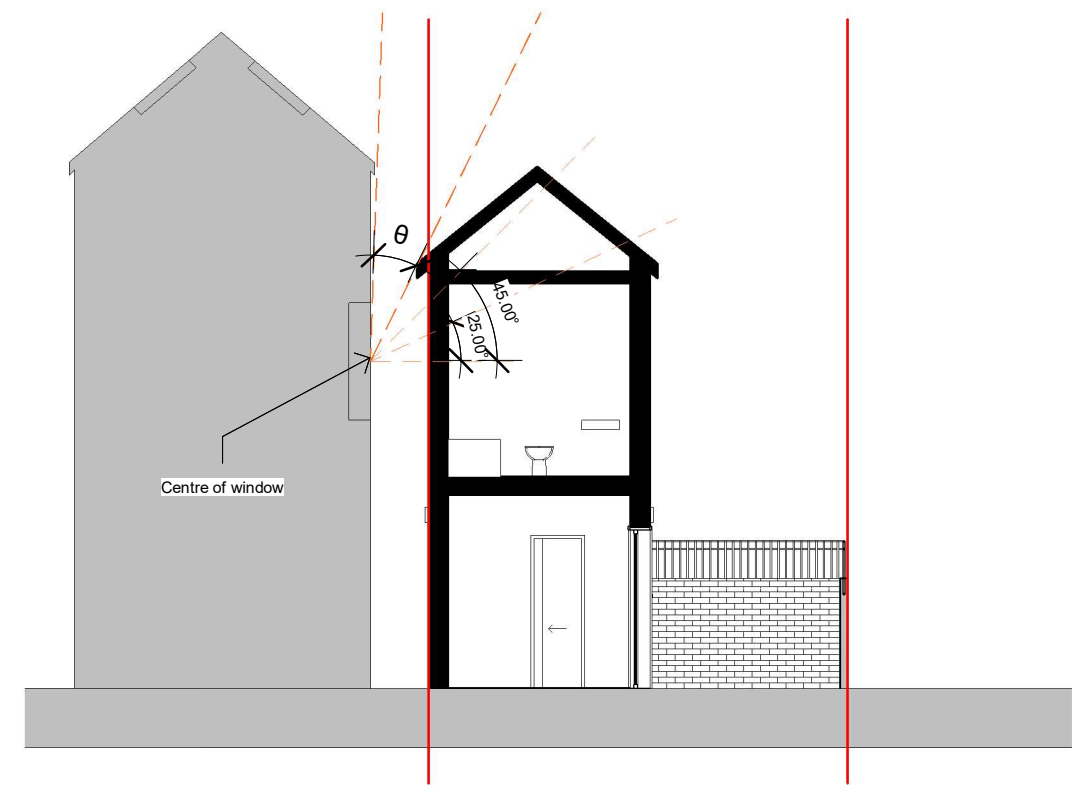


W1: 25 and 45 degree lines from window at 26 Elm Road

W1 Daylighting likely to be significantly affected- vertical sky component <27% for any main window and the proposal decreases the value by more than 0.8 times

W1 is facing staircase and thus not considered to have a major impact



W2: 25 and 45 degree lines from window at 26 Elm Road

No change in vertical sky component
The proposal does not impact daylight/sunlight for W2