

Project name  
**Garden House, Nunwick**  
 Replacement windows

Date	Drawn by	Scale
August 2022	KLD	1:50, 100, 5@A1

Job no	Drawing no	Rev
1449	P1	C

For  
**Nunwick Estate**

Drawing title  
**Proposed works to windows**

Discrepancies, ambiguities and/or omissions between this drawing and information given elsewhere must be reported to the architect before proceeding.  
 This drawing is copyright.  
 Dimensions must be checked on site.  
 Do not scale off dimensions from this drawing.

REV A KLD 1 Feb 2023  
 Window joinery details amended

REV B KLD 8 March 2023  
 Window joinery details amended

REV C KLD 20 Sept 2023  
 Joinery detailing amended following Planning comments

Remove existing windows at W6 and W7.  
 Install new sliding sash box frame windows. Upper sashes with horns.  
 Include for slim line sealed double glazed units.

Remains of blocked window

Remove existing windows at W3, W4 and W11.

Install new sliding sash box frame windows to W3 and W11. Upper sashes with horns.  
 Include for slim line sealed double glazed units.

Install a fixed light window to W4: 3no panes to upper panel (slim line sealed double glazed units) and staggered solid boarding to lower panel.

SOUTH ELEVATION 1:50

NORTH ELEVATION 1:50

Remove existing windows at W1, W2, W8, W9 and W10.  
 Install new sliding sash box frame windows. Upper sashes with horns.  
 Slim line sealed double glazed units.

Remove existing window at W5.  
 Install new sliding sash box frame window. Upper sash with horns.  
 Include for slim line sealed double glazed units.

Carefully remove the existing casement windows, exposing the existing internal lining.

- Install a new sliding sash box frame windows:
- Slim-line sealed glazed units (4,4,4mm),
  - HW glazing bars and general joinery.
  - Traditional pulleys, cords and weights.
  - Install a new internal hw window board.
  - Burnt sand mastic external pointing.
  - Make good to internal lining

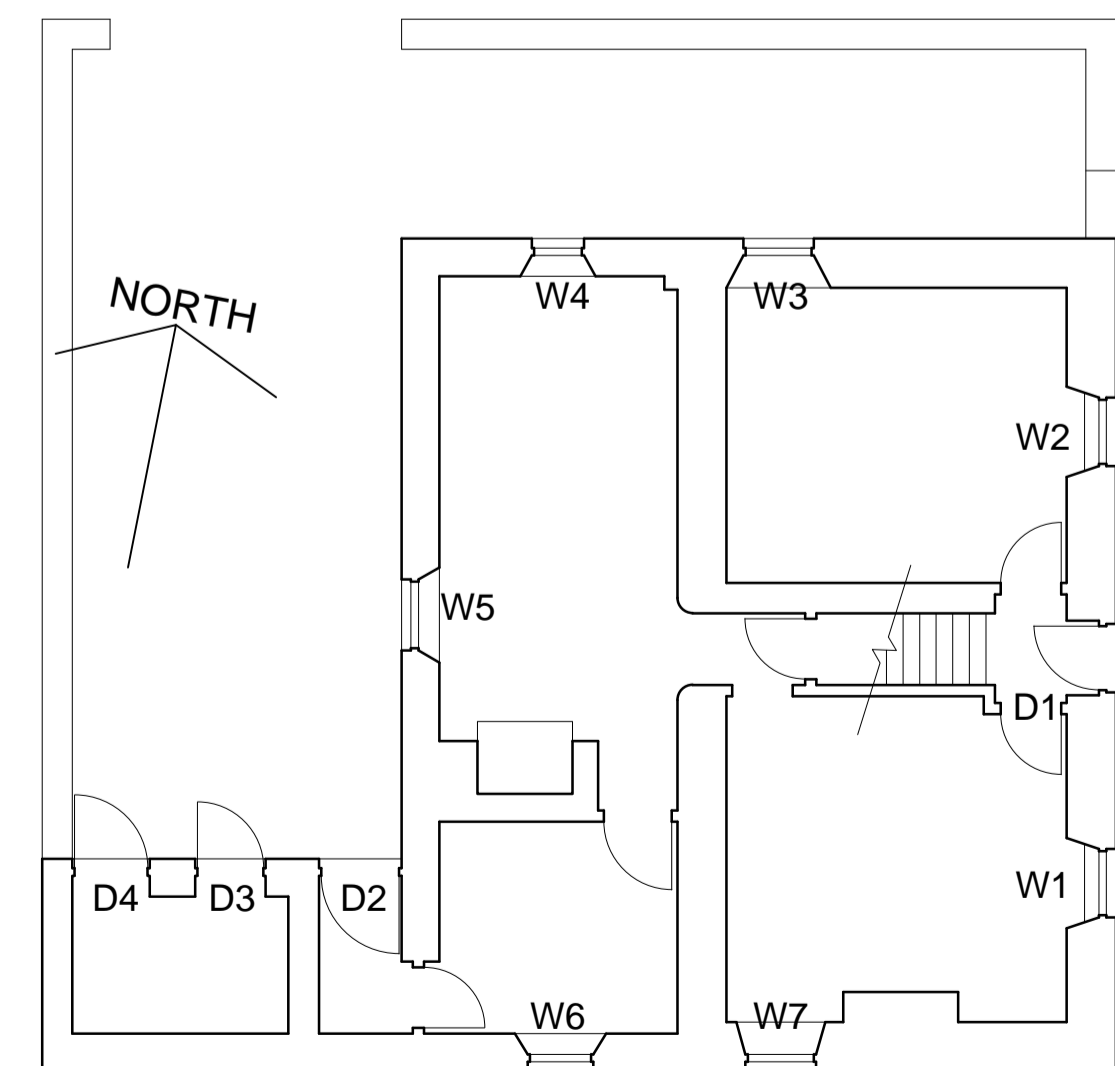
TYPICAL HORIZONTAL SECTION DETAIL TO NEW BOX FRAME WINDOWS 1:5

EAST ELEVATION 1:50

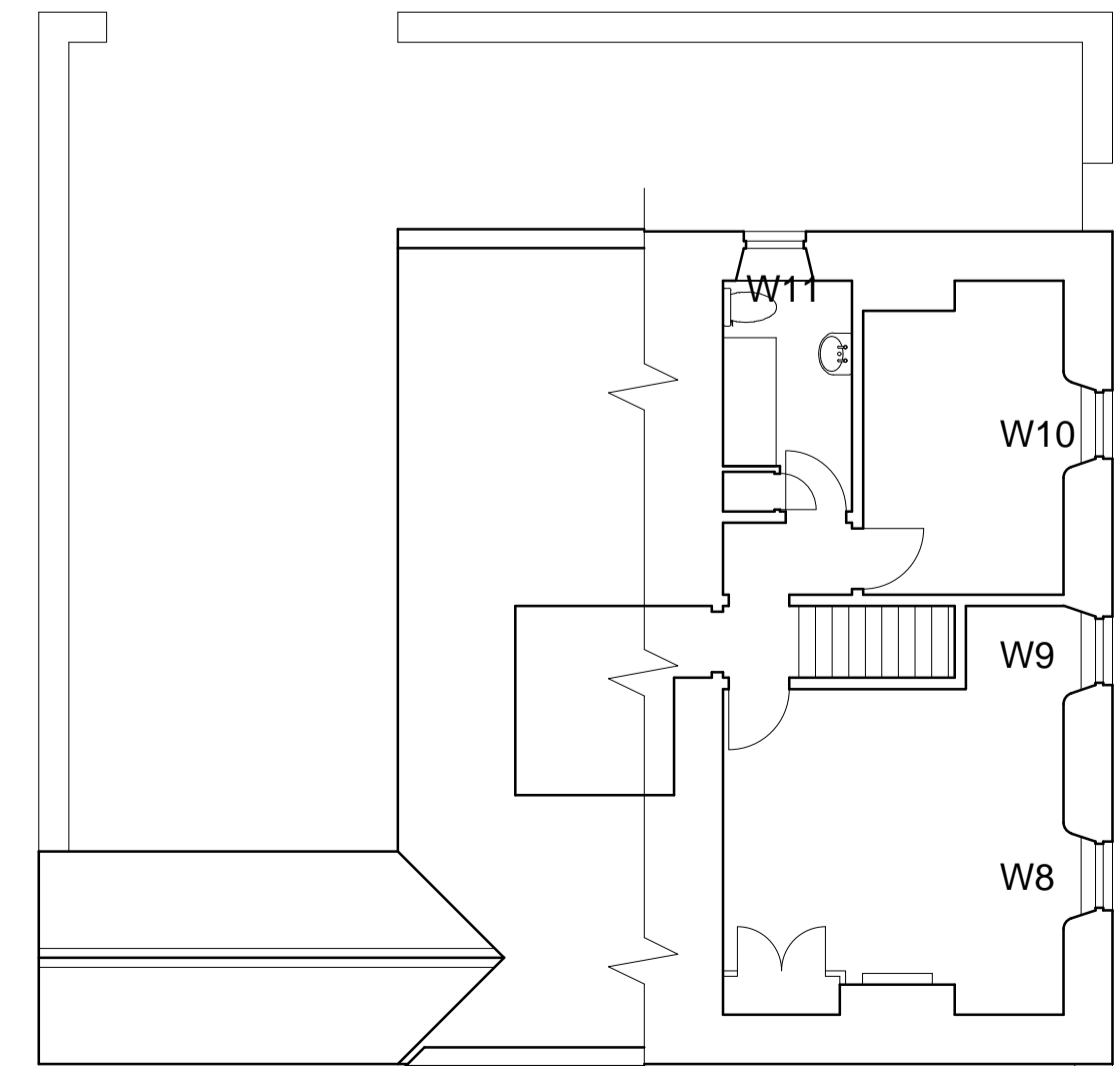
WEST ELEVATION 1:50

VERTICAL DETAIL SECTIONS TO W4 1:5

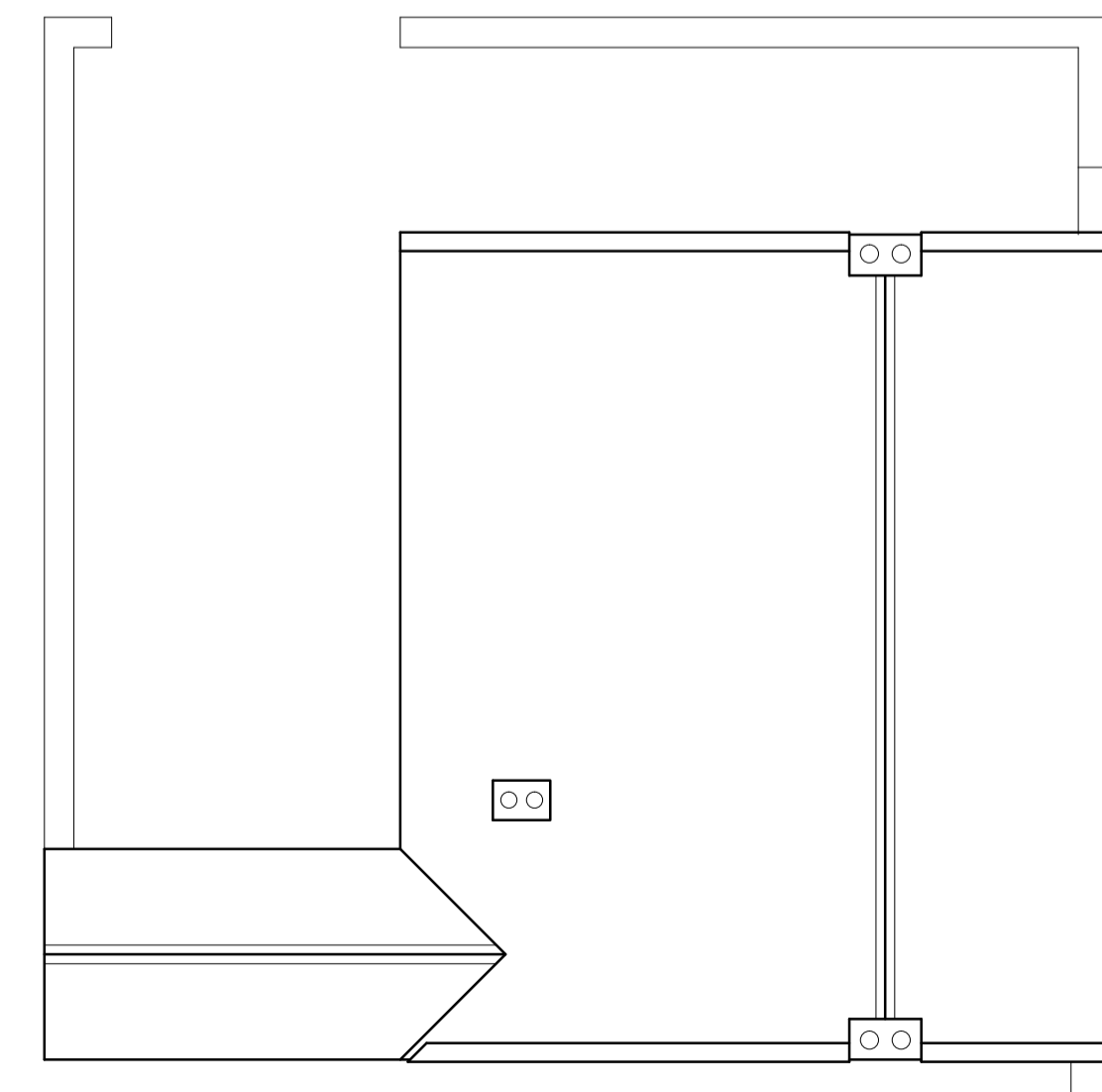
VERTICAL DETAIL SECTIONS TO ALL SLIDING WINDOWS, 1:5



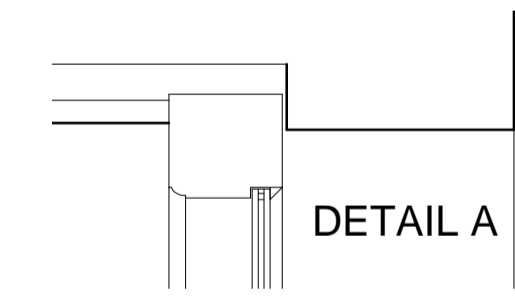
GROUND FLOOR FOOTPRINT PLAN 1:100



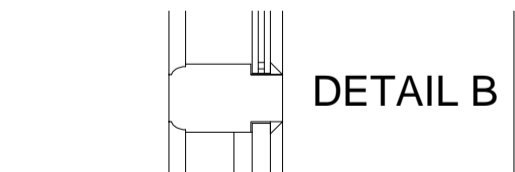
FIRST FLOOR FOOTPRINT PLAN 1:100



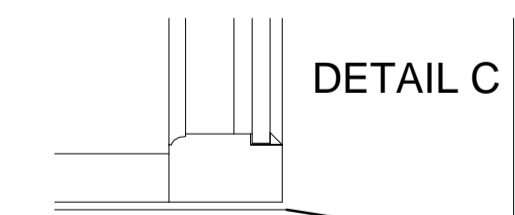
ROOF AND BLOCK PLAN 1:100



DETAIL A

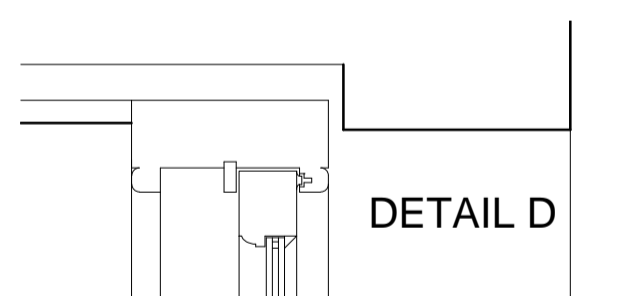


DETAIL B

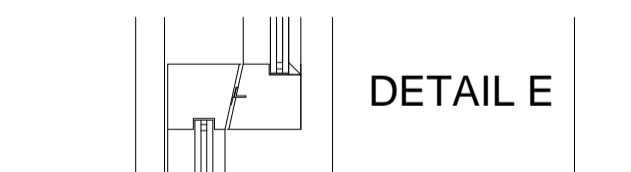


DETAIL C

Specification to W4:  
 Fixed slimline glazing to upper panel.  
 Staggered 75 x 12mm solid boarding to lower panel.



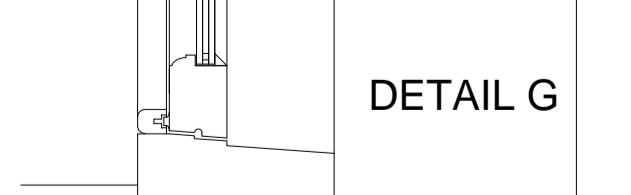
DETAIL D



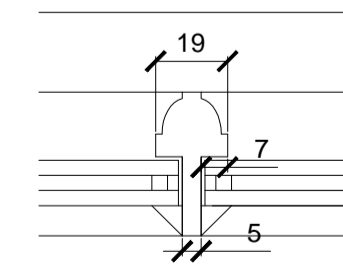
DETAIL E



DETAIL F



DETAIL G



TYPICAL GLAZING BAR DETAIL TO SLIDING SASH, 1:2