

Proposed windows – overview

The proposed windows for the replacement for windows marked F1, F2, F3, F4 and F5 are traditional timber spring sash windows specified with traditional detailing shown in the pictures below

Scaled drawings and full specification of the windows and other associated information is included in other documents that are part of this application.

Features of the proposed timber sash windows



4-coat finishing process



Traditional construction



Window bars



Horn detail to sash



Traditional ironmongery



Child safety features



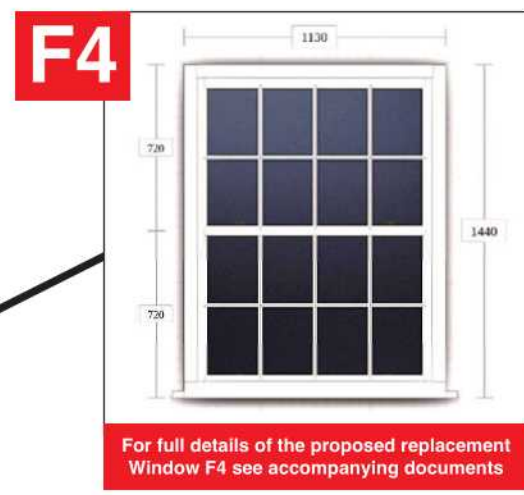
For full details of the proposed replacement Window F1 see accompanying documents



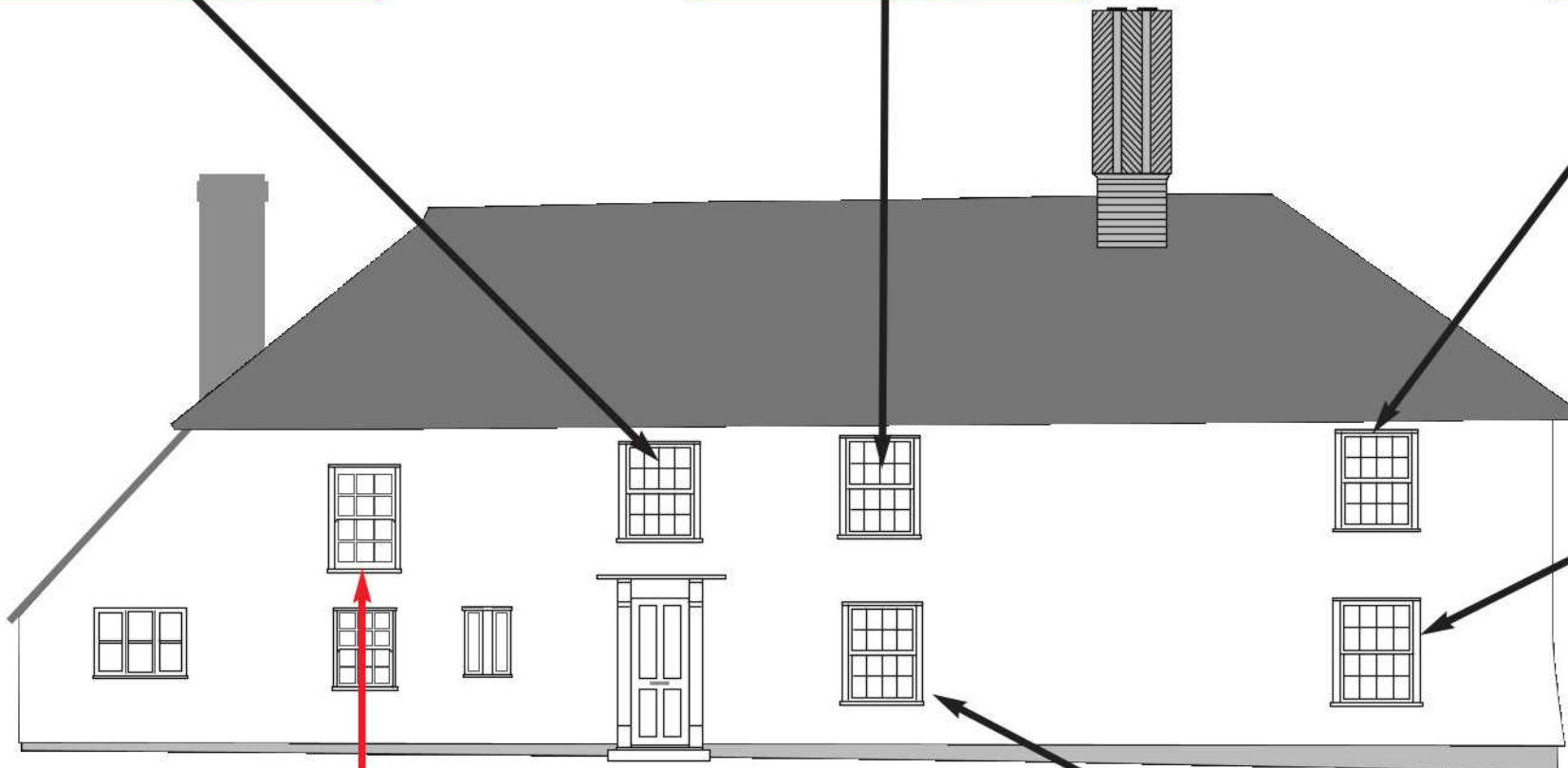
For full details of the proposed replacement Window F2 see accompanying documents



For full details of the proposed replacement Window F3 see accompanying documents



For full details of the proposed replacement Window F4 see accompanying documents



Scale for drawing above
0 5m
SCALE 1:50 @ A1 SIZE

FRONT ELEVATION

Original timber window – features

The existing timber vertical sash window (shown) provides the design template for the proposed new timber vertical sash windows.

Features of the existing timber window are shown here; these features are included in the proposed replacement windows (shown left) and are detailed in the documents that accompany the application.



Traditional design style with two vertically sliding sashes



Horn details at the bottom of the top sash



Traditional window bars retaining the glass



Frame and sash construction uses traditional jointing methods

SEE FULL DETAILS OF PROPOSED REPLACEMENT WINDOWS IN SEPARATE DOCUMENTS THAT ARE PART OF THIS APPLICATION.



For full details of the proposed replacement Window F5 see accompanying documents

Proposed replacement windows – FRONT

Print plans at A1 size

Purely Planning Limited
Unit 21
Shire Hill
Saffron Walden
Essex CB11 3AQ
Telephone: 01799 527542

TITLE: Proposed replacement windows - front of property

PROJECT: Contact Purely Planning for details

REFERENCE: PPL1080/proposed-front

DRAWN BY: PPL/MG

DATE: 26/09/2023 SCALE: AS SHOWN