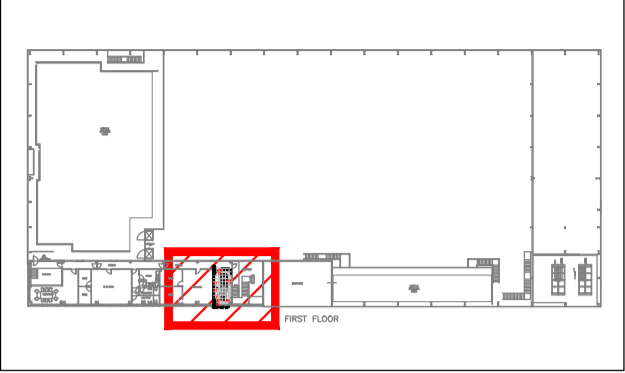


PROPOSAL

NOTE: DO NOT SCALE OFF THIS DRAWING.
ALWAYS WORK TO NOTED DIMENSIONS

LOCATION PLAN:



LEGEND:

NOTES:

- ALL INTERNAL PIPEWORK TO BE INSULATED USING 13mm WALL CLASS 'O' ARMAFLEX OR EQUIVALENT AND APPROVED MANUFACTURER, WITH JOINTS BEING TAPED TO FORM A THERMAL AND VAPOUR BARRIER.
- ALL EXTERNAL PIPEWORK TO BE INSULATED USING 13mm WALL CLASS '1' HT ARMAFLEX OR EQUIVALENT AND APPROVED MANUFACTURER, WITH JOINTS BEING TAPED TO FORM A THERMAL AND VAPOUR BARRIER.
- PIPEWORK TO BE SUPPORTED USING HYDROSORB TYPE FIXINGS OR EQUAL AND APPROVED.
- PIPEWORK SHALL NOT BE RUN ON CABLE TRAY UNLESS APPROVED BY SUDLOWS.
- INTERCONNECTING CONTROL CABLE TO BE APPROPRIATE CABLE TIES.
- ALL PIPEWORK TO BE PURGED USING OXYGEN FREE NITROGEN WHILST BRAZING.
- REFRIGERATION PIPEWORK SHALL BE MANUFACTURED FROM SEAMLESS QUALITY HARD DRAWN COPPER TO BS2781 PART II ASTM, DIN 1754/8905, FULLY TESTED BY THE EDDY CURRENT METHOD, DEHYDRATED AND CAPPED.
- PIPEWORK SHALL BE STRAIGHT DRAWN COPPER USING 3m OR 6m LENGTHS, SOFT DRAWN COPPER COILS SHALL NOT BE ACCEPTED.
- SOFT DRAWN COPPER COILS SHALL NOT BE USED UNLESS APPROVED BY SUDLOWS.
- ALL PENETRATIONS THROUGH INTERIOR WALLS AND/OR FLOORS SHALL BE SEALED AND FIRE COMPARTMENTATION SHALL BE MAINTAINED.
- CONDENSATE DRAINS SHALL BE INSTALLED AND ROUTED TO ENSURE A GRADIENT OF 1:100.
- REFRIGERATION PIPEWORK TO BE PRESSURE TESTED USING OXYGEN FREE NITROGEN AND WITNESSED BY THE SUDLOWS NOMINATED PERSON.
- REFRIGERATION PIPEWORK TO BE EVACUATED TO <2TORR AND BE HELD FOR A MINIMUM OF 1 HOUR WITHOUT ANY RISE IN PRESSURE AND SHALL BE WITNESSED BY THE SUDLOWS NOMINATED PERSON.
- EXISTING SPLIT SYSTEMS TO BE DECOMMISSIONED AND REPLACED WITH NEW MITSUBISHI ELECTRIC 10KW SYSTEMS.
- POWDER COATED DRIP TRAYS TO BE FITTED UNDER EACH INDOOR WALL MOUNTED UNIT WITH LEAK DETECTION SENSOR INSTALLED.

P01	PROPOSAL ISSUE	14/07/23	SE	JC
REV	DESCRIPTION	DATE	BY	CHK



SUDLOWS LIMITED
DUCIE WORKS
HULME HALL LANE
MANCHESTER M40 8HH

TELEPHONE: 0800 783 5697
FAX: 0161 205 0295
EMAIL: CAD@SUDLOWS.COM
WWW.SUDLOWS.COM

Client:



Site:

BELLSHILL

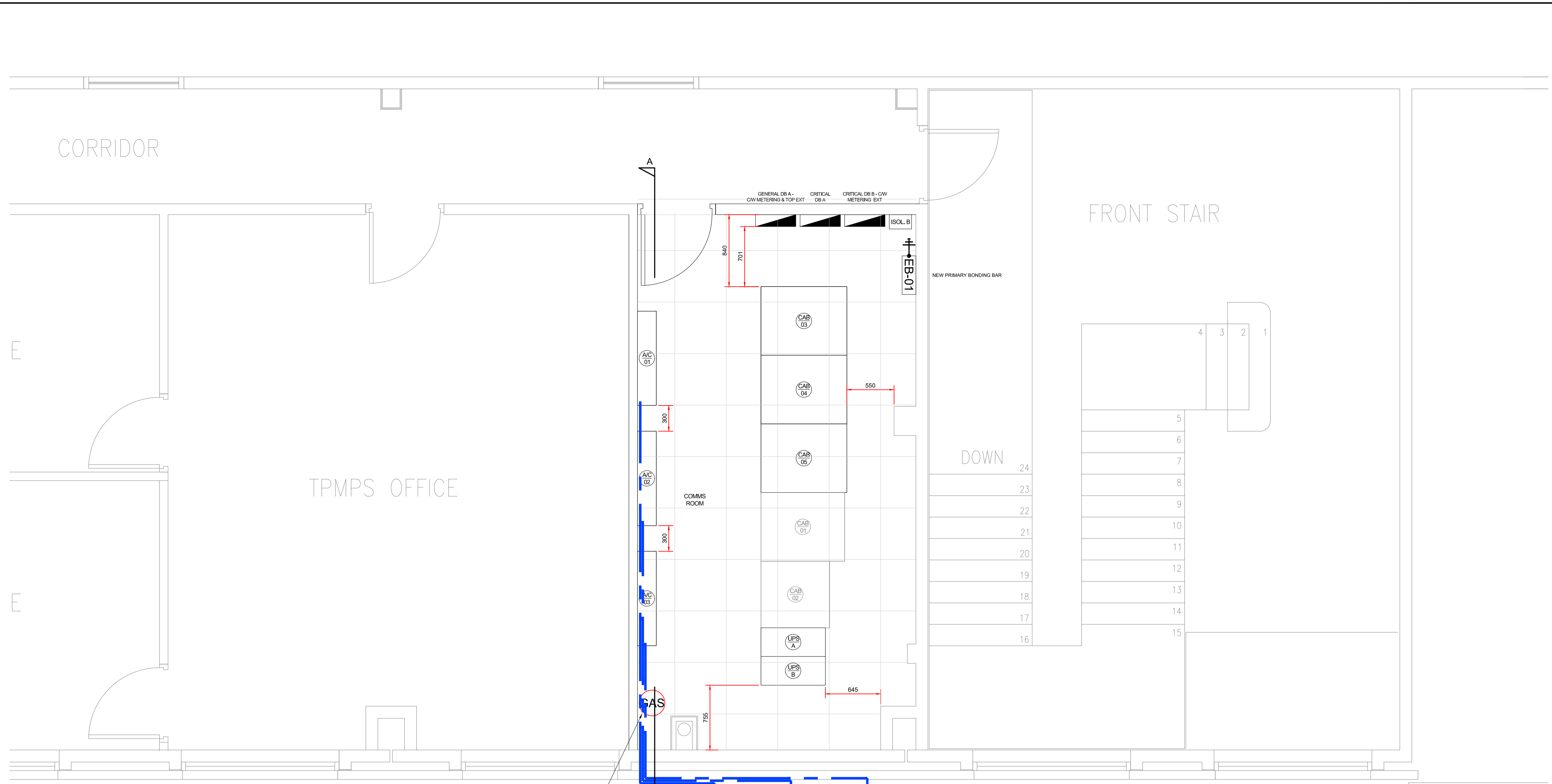
Status: PROPOSAL Scale: 1:25

Date Created: 12/07/23 Drawn By: SE Sheet Size: A1

Drawing Title:
COOLING LAYOUT
DC2
FIRST FLOOR

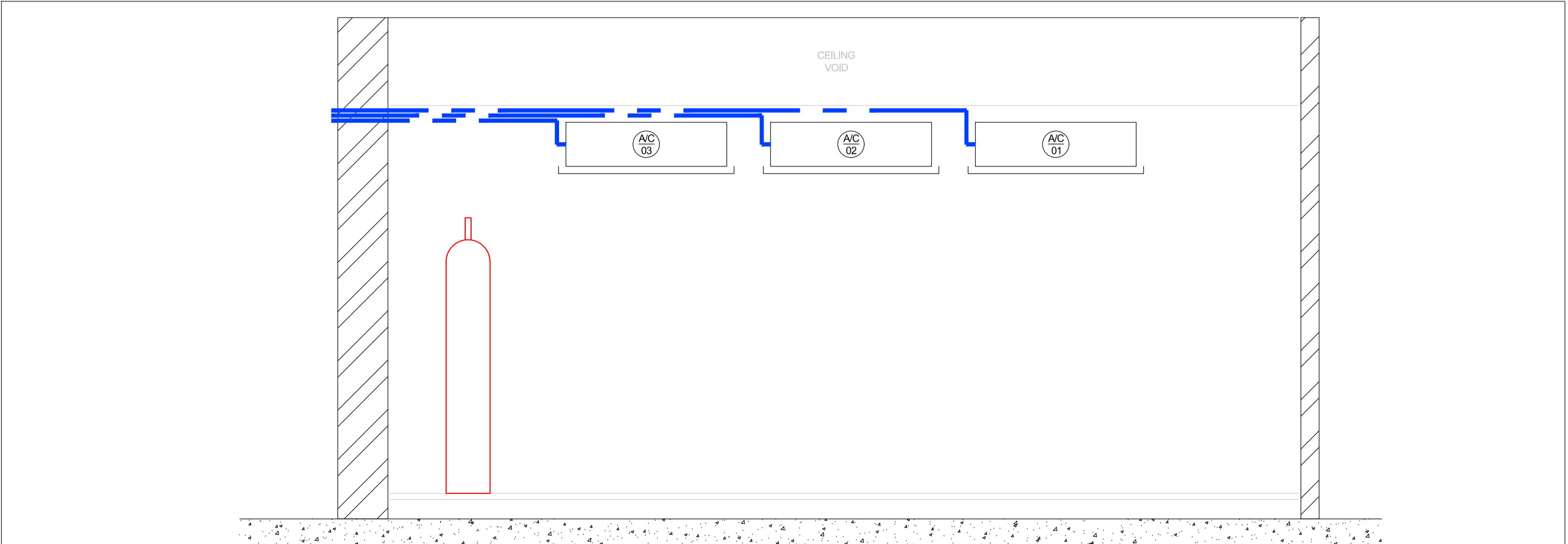
Project No.: PR85150 Suitability: S3

Drawing No.: SUD-XX-01-DR-M-3001 Rev: P01



PIPEWORK RUNS WITHIN DC2, SURFACE FIXED TO WALL AND PENETRATES EXTERNAL ELEVATION

NEW CONDENSING UNITS TO BE LOCATED AT HIGH LEVEL EXTERNALLY TO SIMILAR LOCATION AS EXISTING



SECTION A-A
SCALE: 1:25