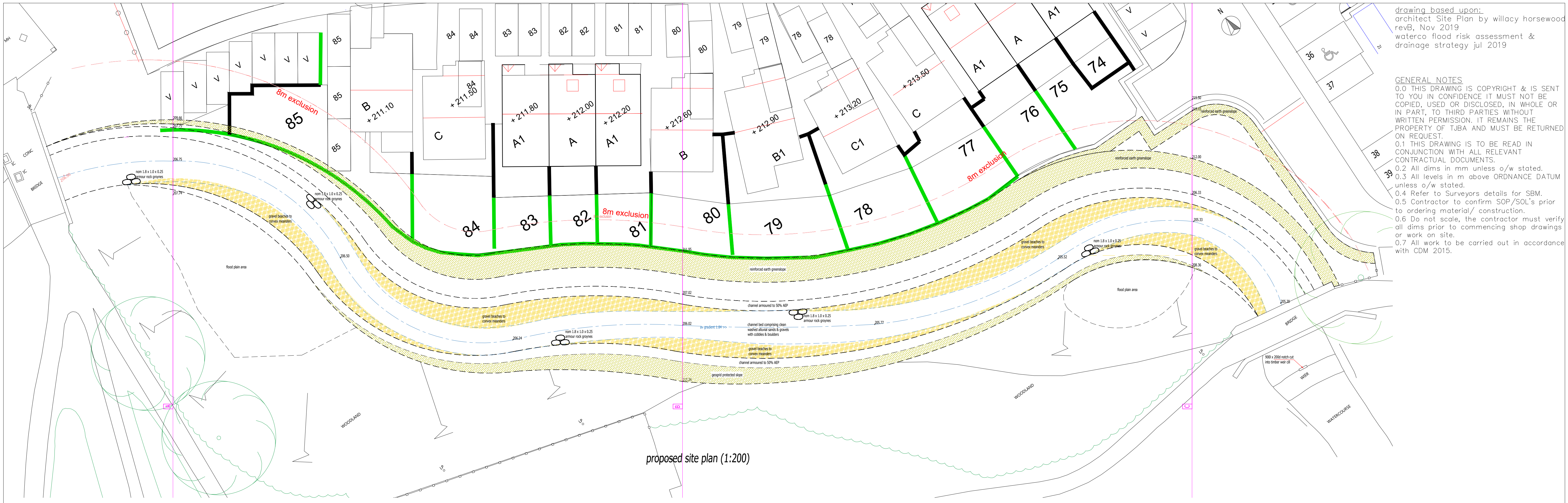
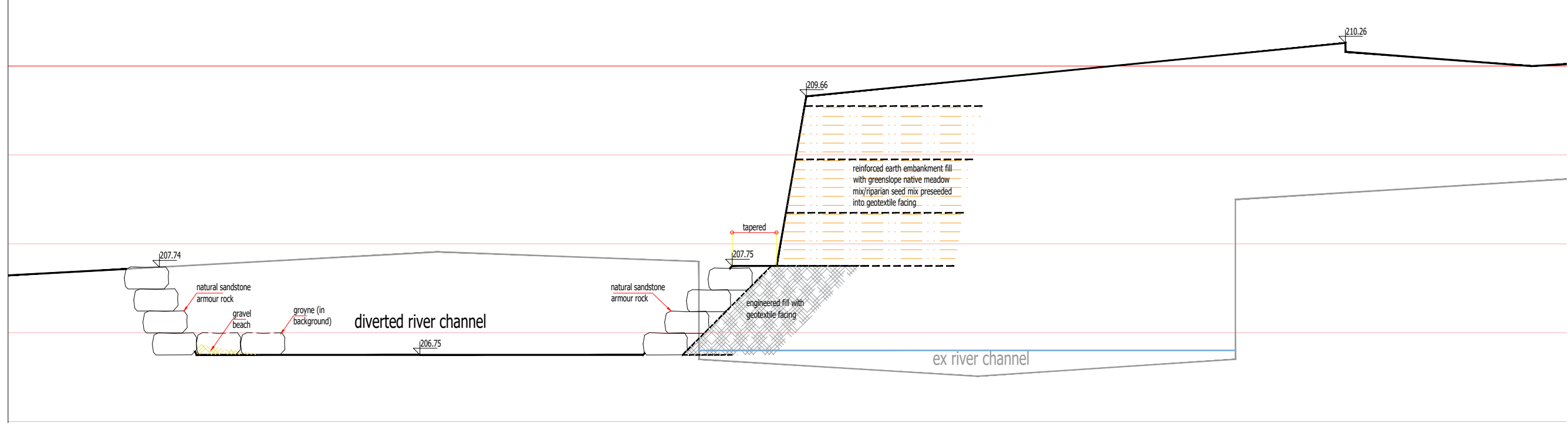


drawing based upon:
 architect Site Plan by willacy horsewood
 revB, Nov 2019
 waterco flood risk assessment &
 drainage strategy jul 2019

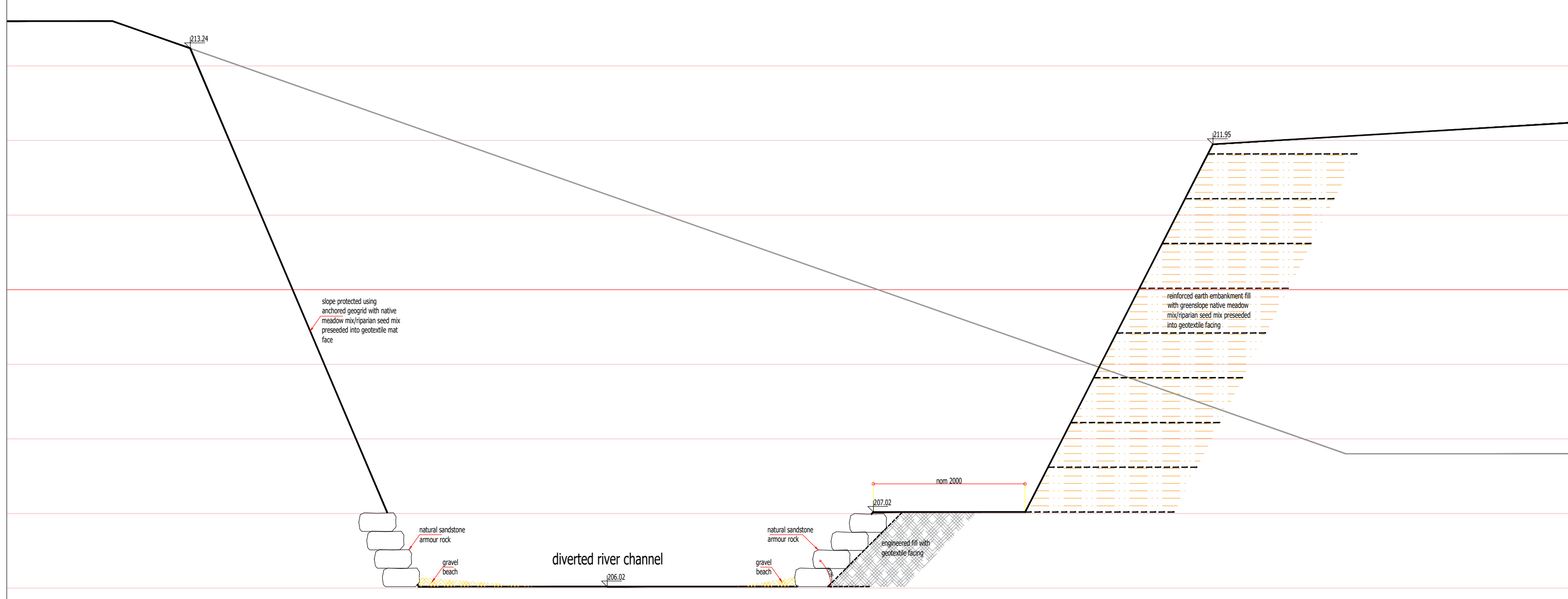
- GENERAL NOTES**
- 0.0 THIS DRAWING IS COPYRIGHT & IS SENT TO YOU IN CONFIDENCE IT MUST NOT BE COPIED, USED OR DISCLOSED, IN WHOLE OR IN PART, TO THIRD PARTIES WITHOUT WRITTEN PERMISSION. IT REMAINS THE PROPERTY OF TJBA AND MUST BE RETURNED ON REQUEST.
 - 0.1 THIS DRAWING IS TO BE READ IN CONJUNCTION WITH ALL RELEVANT CONTRACTUAL DOCUMENTS.
 - 0.2 All dims in mm unless o/w stated.
 - 0.3 All levels in m above ORDINANCE DATUM unless o/w stated.
 - 0.4 Refer to Surveyors details for SBM.
 - 0.5 Contractor to confirm SOP/SOL's prior to ordering material/ construction.
 - 0.6 Do not scale, the contractor must verify all dims prior to commencing shop drawings or work on site.
 - 0.7 All work to be carried out in accordance with CDM 2015.



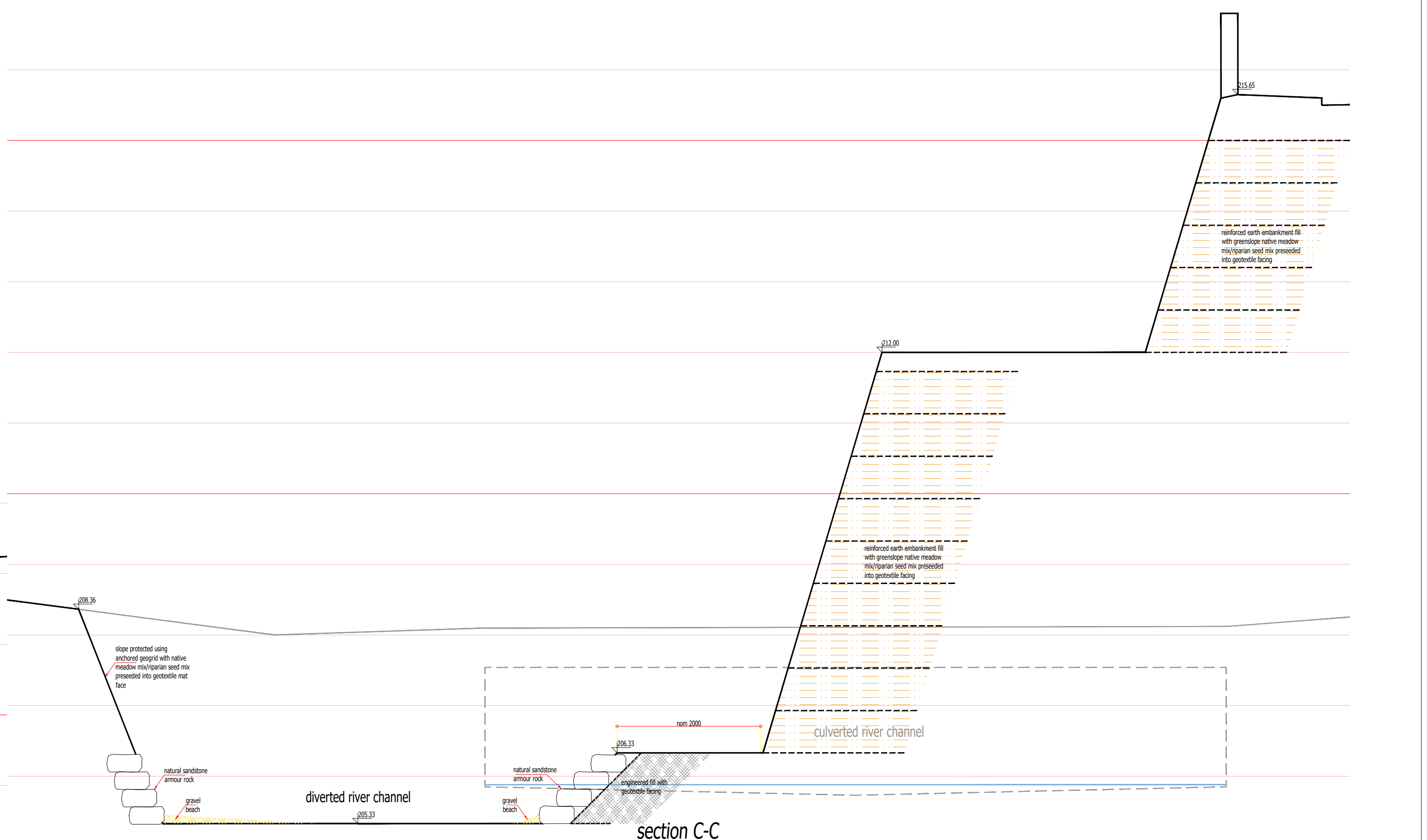
proposed site plan (1:200)



section A-A



section B-B



section C-C

AMENDMENTS/ ISSUES			
1	river bed profile & notes amended	sept 23	ds
0	sendng note to embankment	sept 23	ds
rev 00	original	sept 23	ds
REVISION	REASON/ CHANGE	DATE	BY

planning T J BOOTH ASSOCIATES 20A Eastgate Street Rochdale Lancashire OL16 1DH Tel:01706 868288
 CONSULTING CIVIL & GEOTECHNICAL ENGINEERS
JA YATES / ALBERT MILL, WHITWORTH
 river diversion plan & sections
 FILE NAME: dwg-tjba-JAY-albert mill-050423
 SCALE: 1 : 50 @ A1