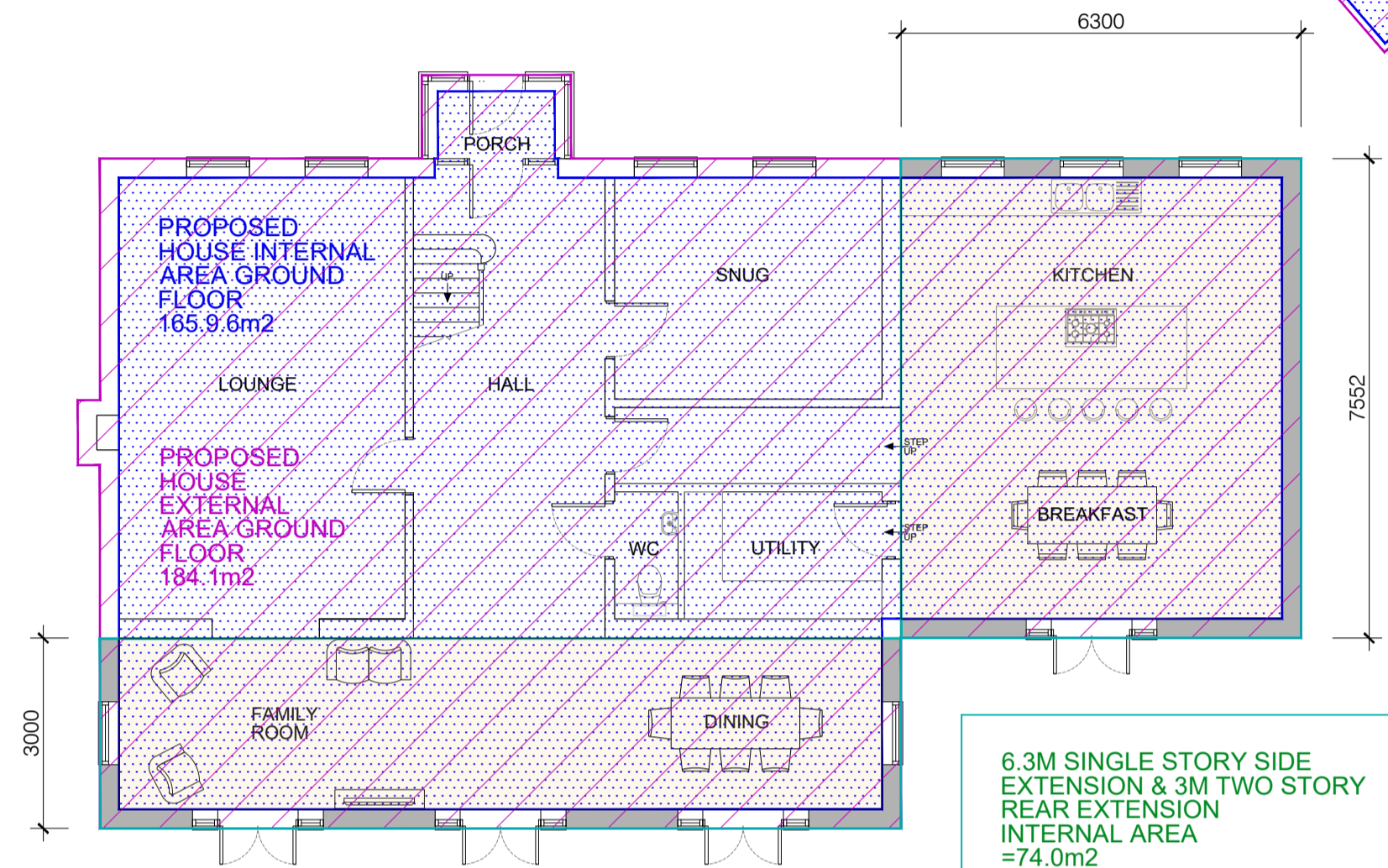
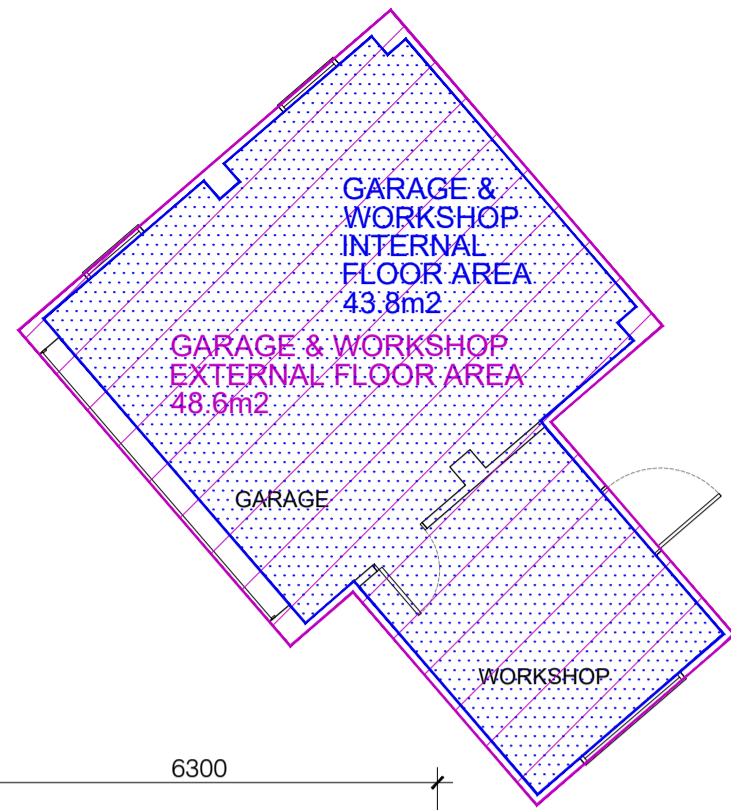


PROPOSED PD - TWO STORY REAR EXTENSION & SINGLE STORY SIDE EXTENSION



GROUND FLOOR PLAN 1:100

6.3M SINGLE STORY SIDE EXTENSION & 3M TWO STORY REAR EXTENSION
INTERNAL AREA = 74.0m²

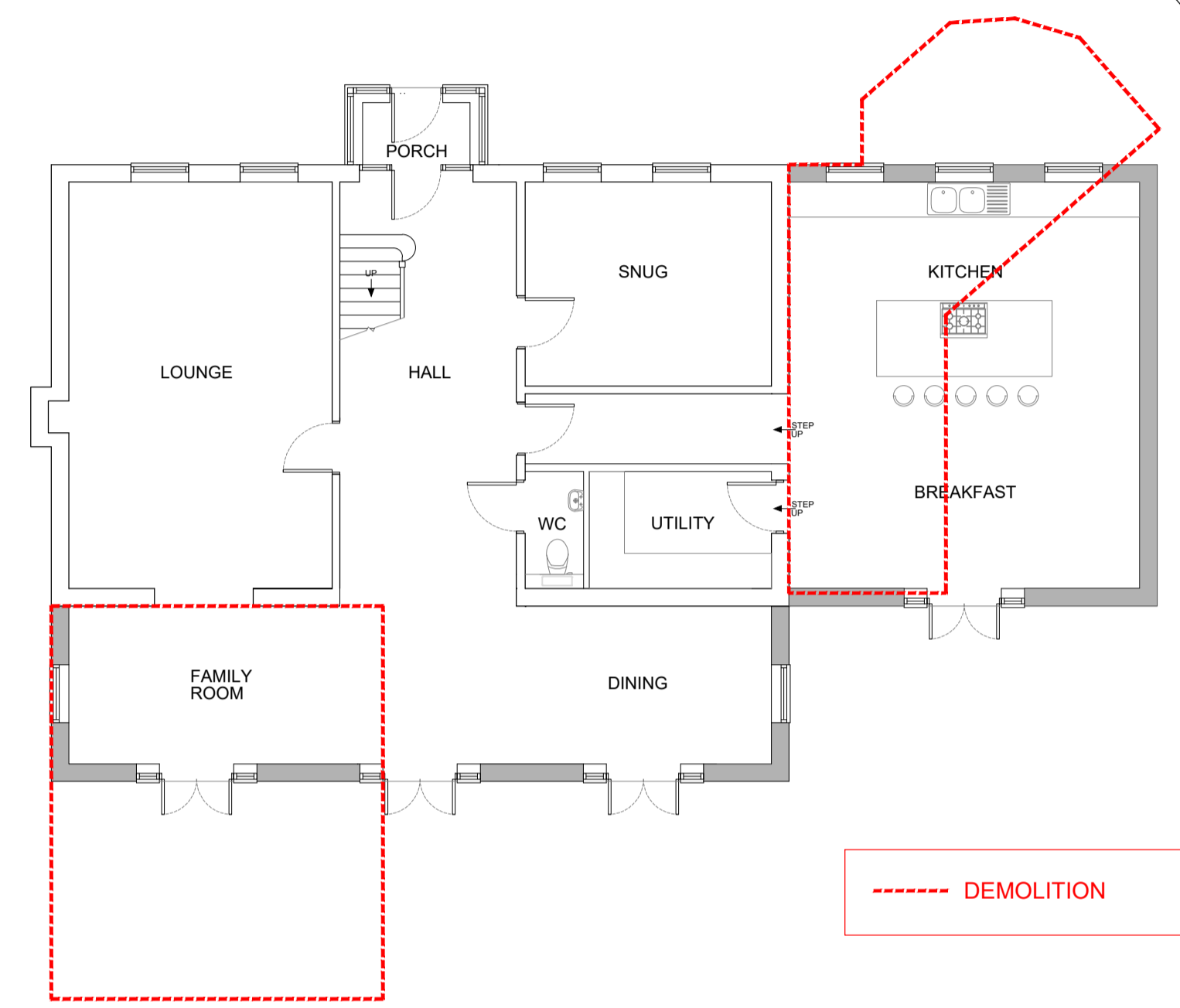
6.3M SINGLE STORY SIDE EXTENSION & 3M TWO STORY REAR EXTENSION
EXTERNAL AREA = 85.2m²

6.3M SINGLE STORY SIDE EXTENSION & 3M TWO STORY REAR EXTENSION
TOTAL GROSS EXTERNAL VOLUME = 455.1m³

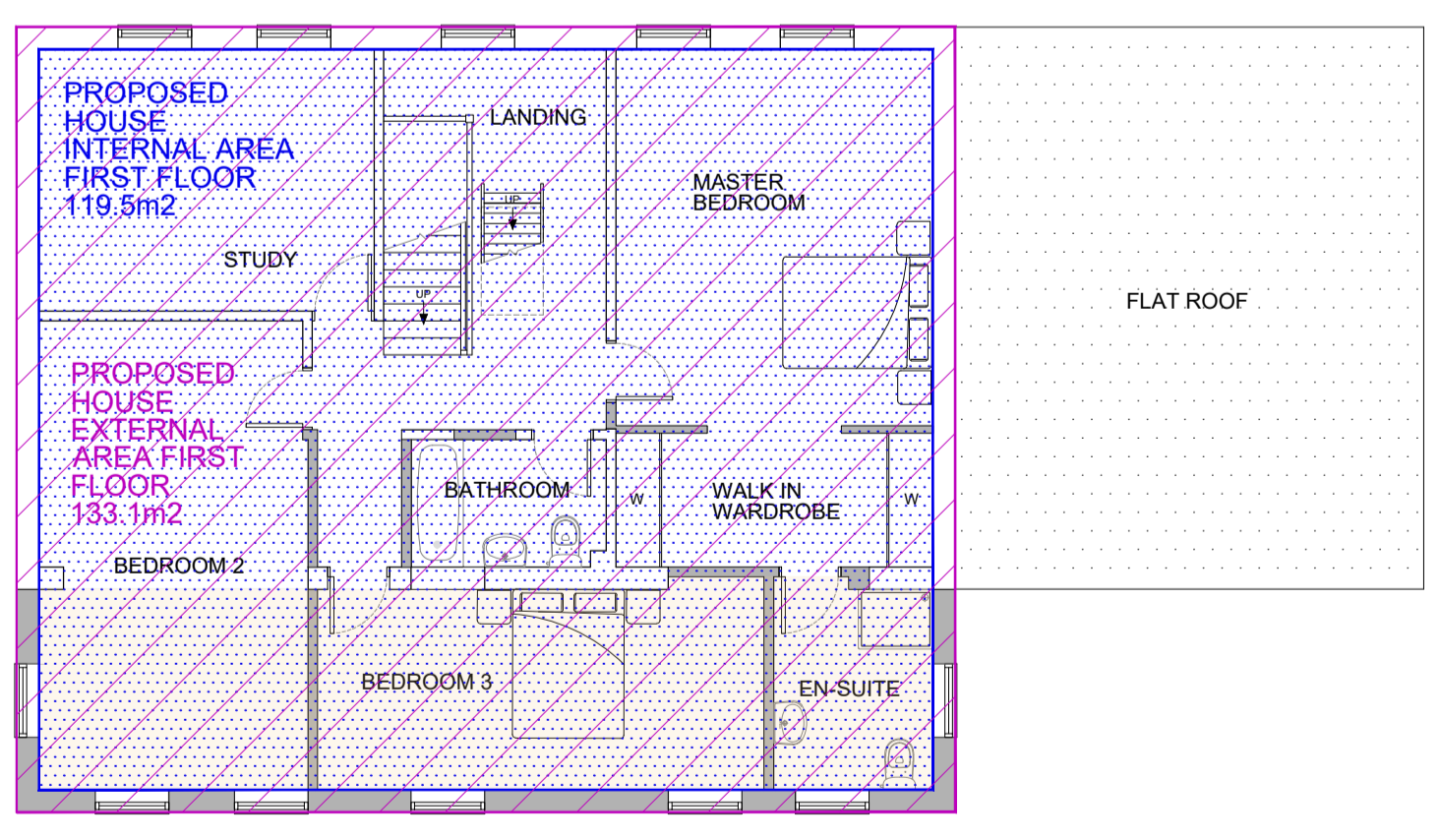
HOUSE TOTAL INTERNAL LIVING SPACE AREA = 165.9 + 119.5 + 39.8 = 325.2m²

HOUSE TOTAL EXTERNAL LIVING SPACE AREA 184.1 + 133.1 + 46.4 = 363.6m²

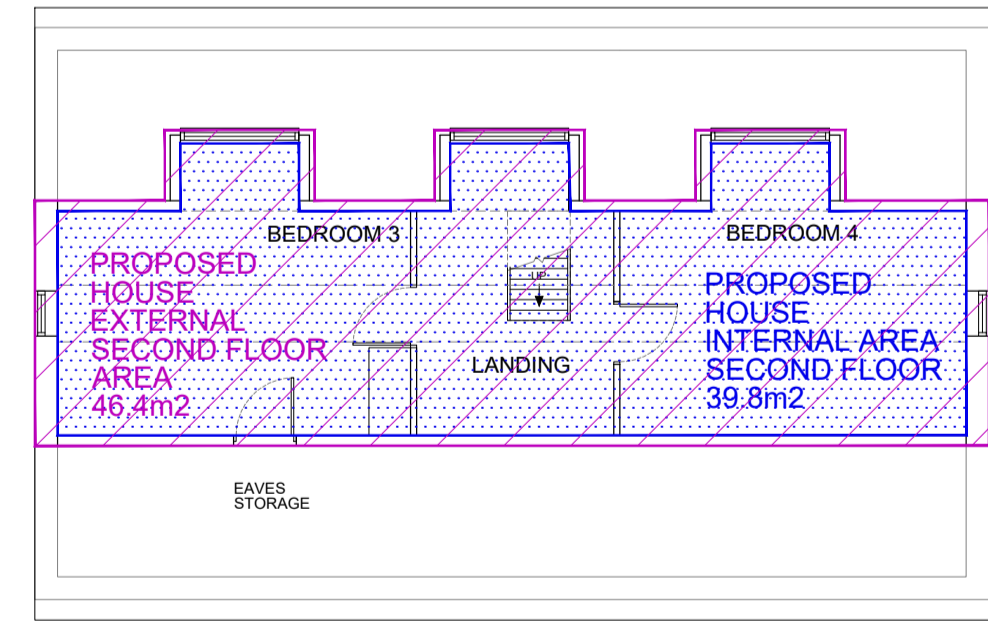
HOUSE TOTAL EXTERNAL GROSS VOLUME (LIVING SPACE) 682.9 + 9.3 + 142.5 + 312.6 = 1147.3m³



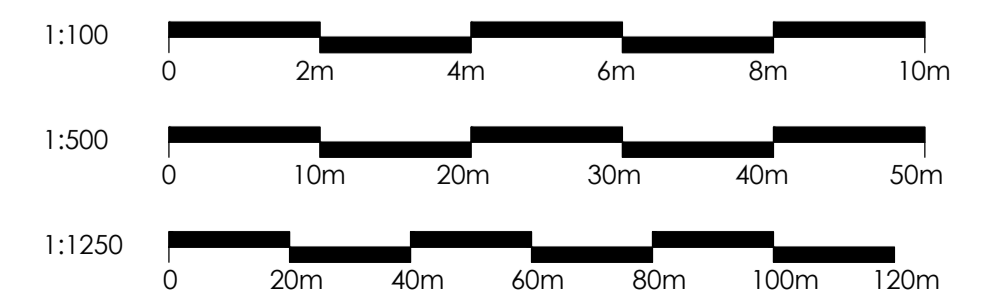
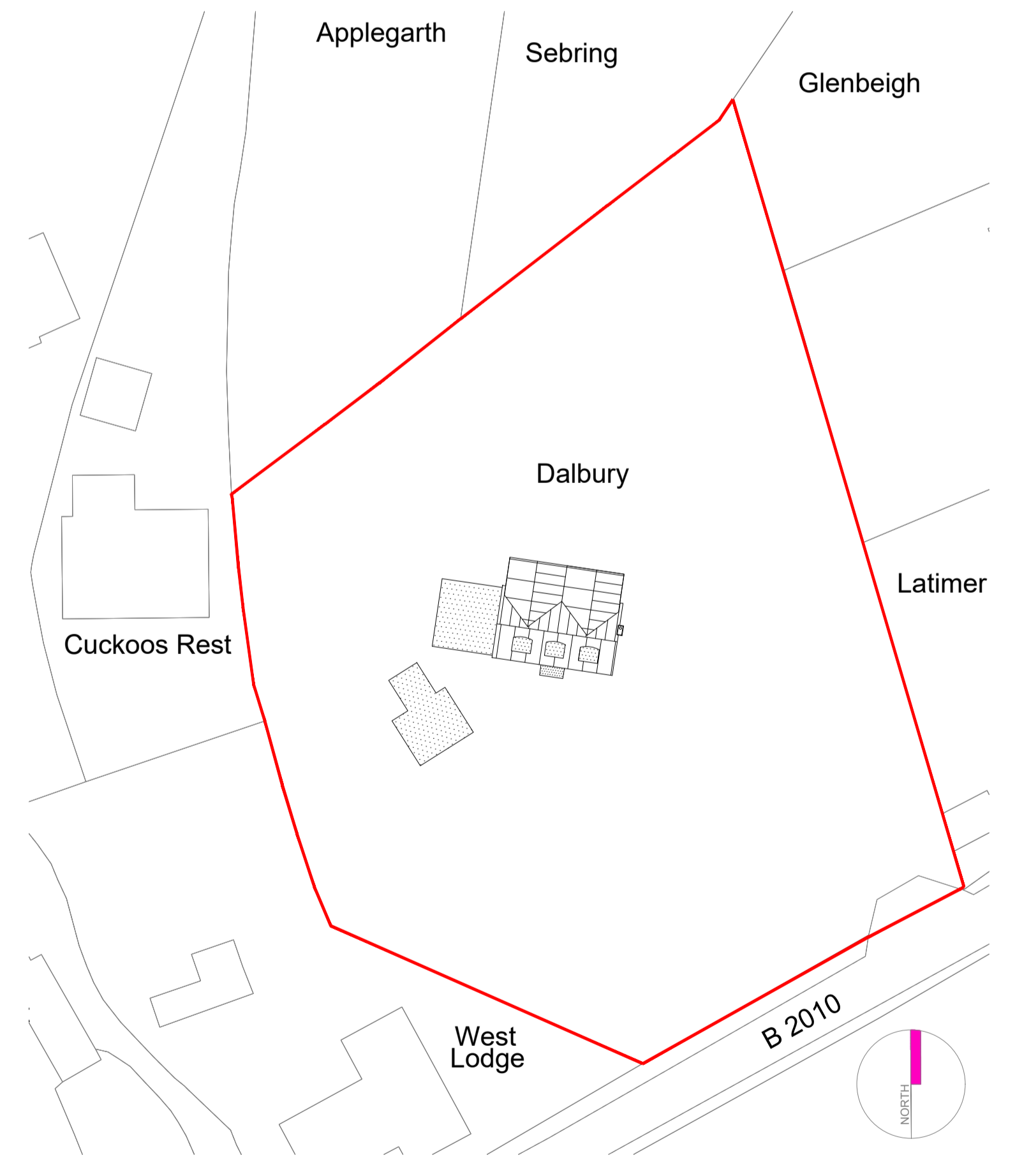
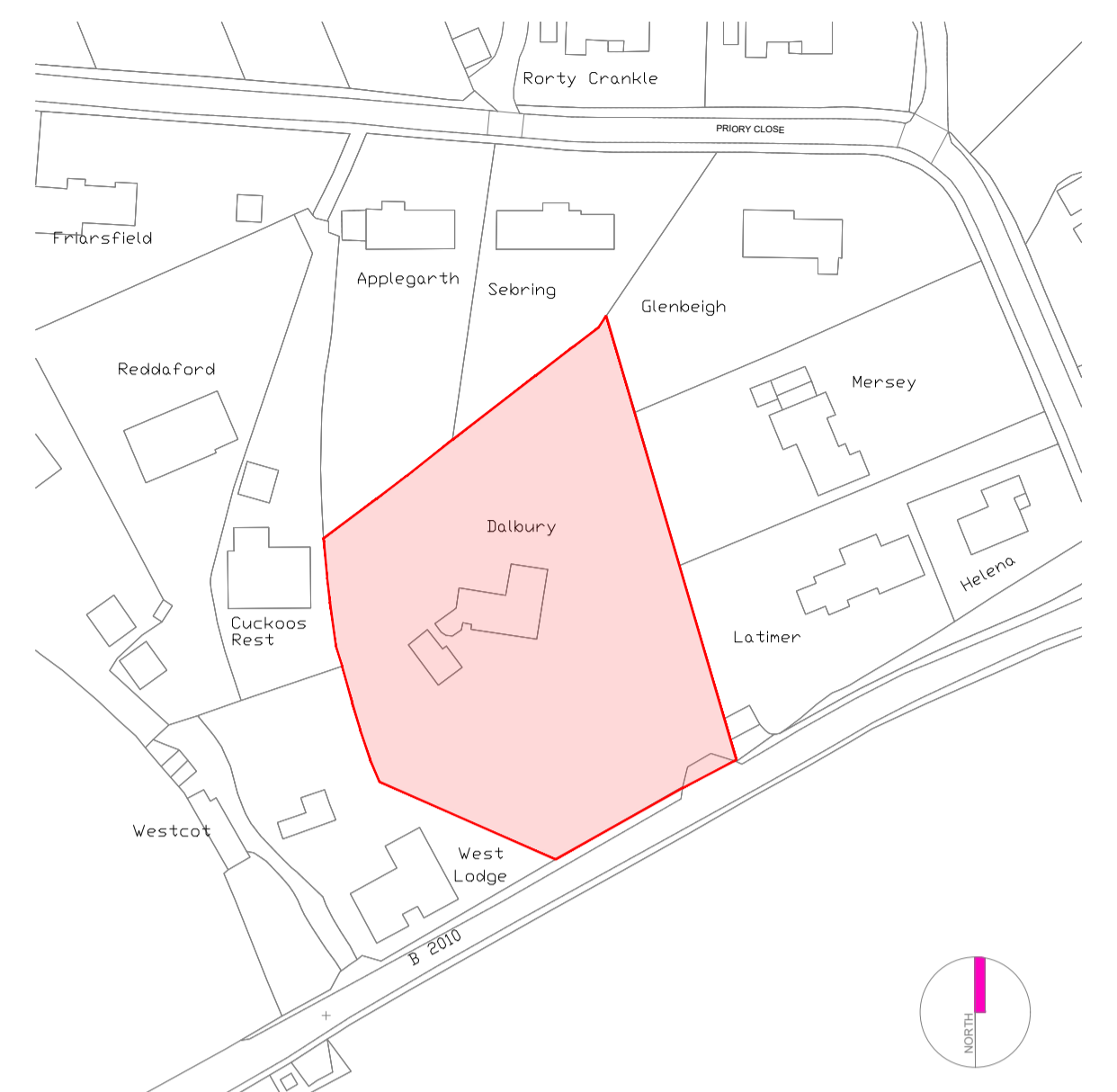
GROUND FLOOR DEMOLITION PLAN 1:100



SECOND FLOOR PLAN 1:100



SECOND FLOOR PLAN 1:100



JOB TITLE DALBURY EAST FARLEIGH, MAIDSTONE ME15 0JH	DRAWING TITLE TWO STORY REAR EXTENSION & SINGLE STORY SIDE EXTENSION- AREAS & VOLUME
SCALE A1:100@A1 DATE SEPT 23	DRAWING NUMBER BDS-DB-PD104 REVISION A



DO NOT SCALE FROM THIS DRAWING