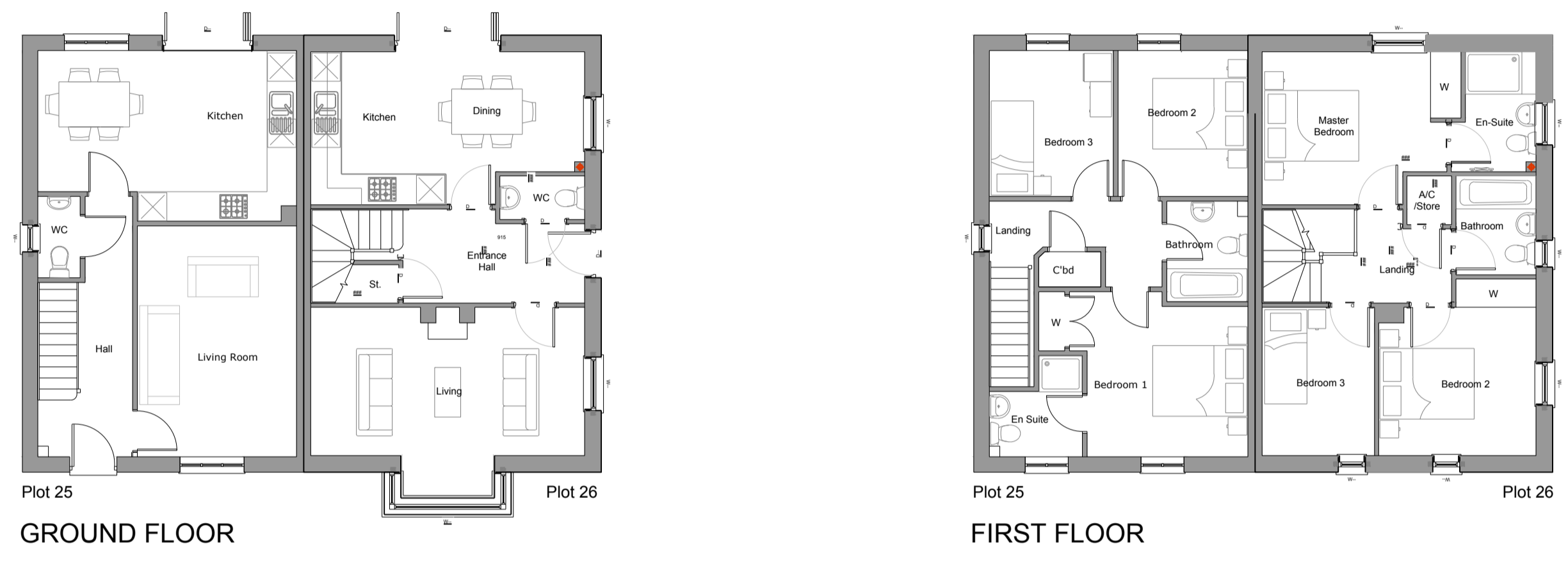


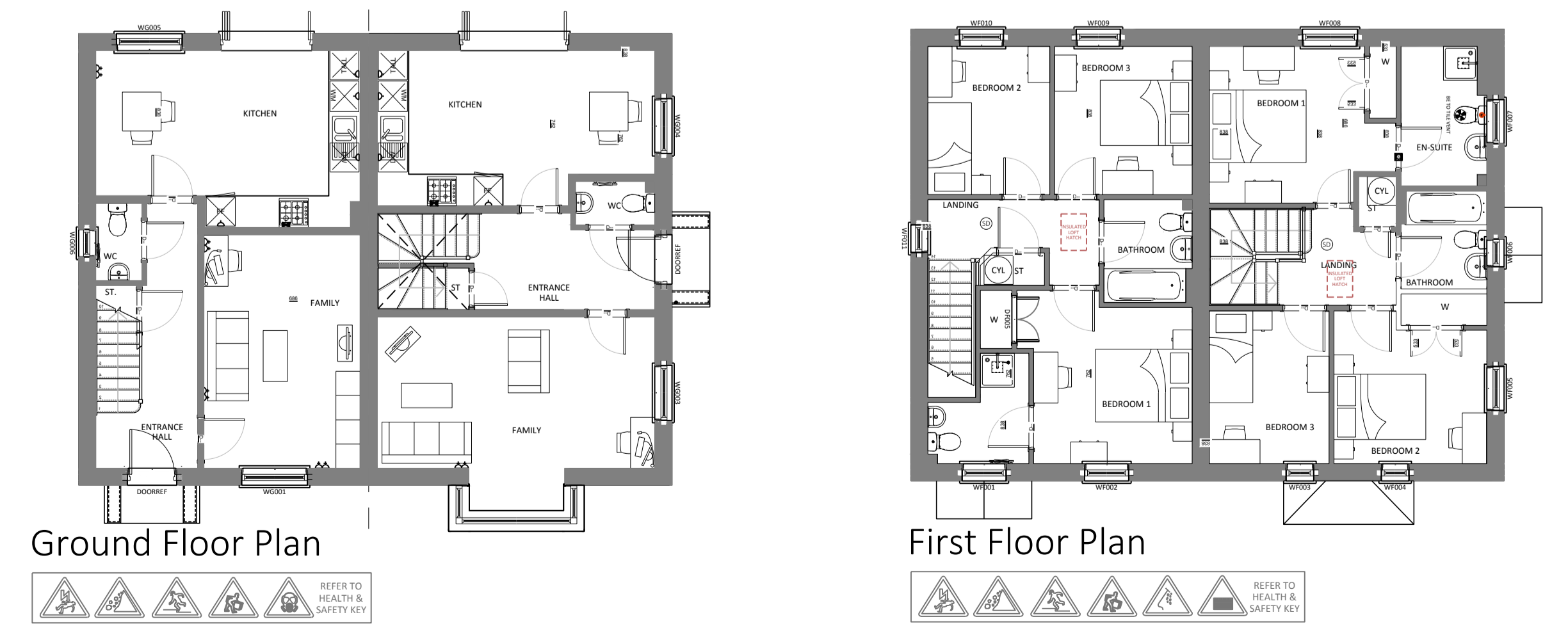
Rev	Date	Amendment	By



- Amendments**
- Chimney and fire place removed.
 - Porch design changed.
 - Eaves design changed.
 - Headers and cill changed.



APPROVED DESIGN



CURRENT DESIGN

GRANARY DEVELOPMENTS

RDC DEVELOPMENT CONSULTANTS
01604 500047 | www.rdc.co.uk

Project:
Glebe Street
Church Street
Weldon

Client:
Granary Developments Ltd
Harston
Cambridgeshire

Drawing:
Plots 25 26
Plans and Elevations - NMA
Plots As: 25 26 Opp: -

Drawing No: Revision:
21028-NMA-11

Drawn By: GJ
Checked By: SC
First Issue: July 2023

