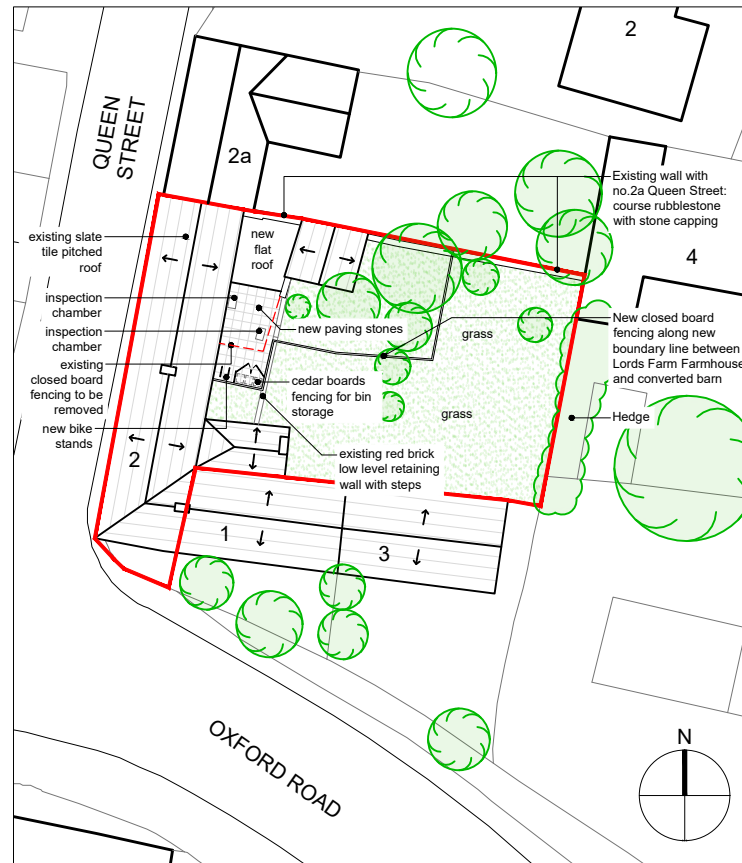


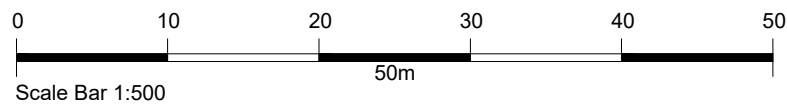
Notes

1. Copyright Jessop and Cook Architects Limited.
2. Do not scale from drawings, all dimensions to be checked on site.



SITE PLAN - PROPOSED

Scale 1:500



Revisions

PLANNING ISSUE

Conversion of thrashing barn into residence at
Lords Farm, 2 Queen Street
Eynsham, Witney OX29 4HQ

for

Oxford Preservation Trust
10 Turn Again Lane, St Ebbes, Oxford. OX1 1QL

Drawing title

Proposed Site Plan
between Farmhouse and Barn

JESSOP & COOK
ARCHITECTS

WEST WING, SECOND FLOOR
9 PARK END STREET
OXFORD OX1 1HH

T: 01865 591212
E: info@jessopandcook.co.uk
www.jessopandcook.co.uk

Scale at A4
1:500

Date
Sep 19

Drawn by
AB

Checked

Drawing number

Revision

P.1354_087