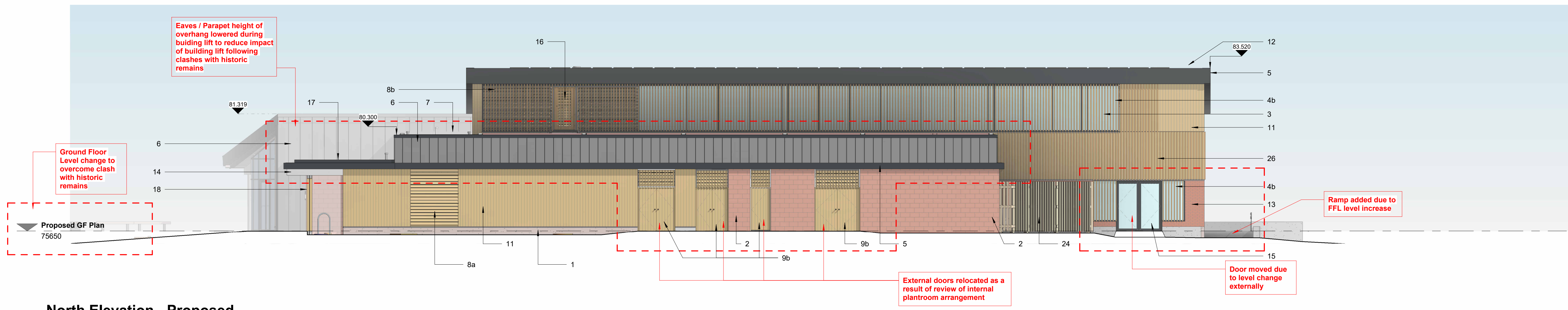


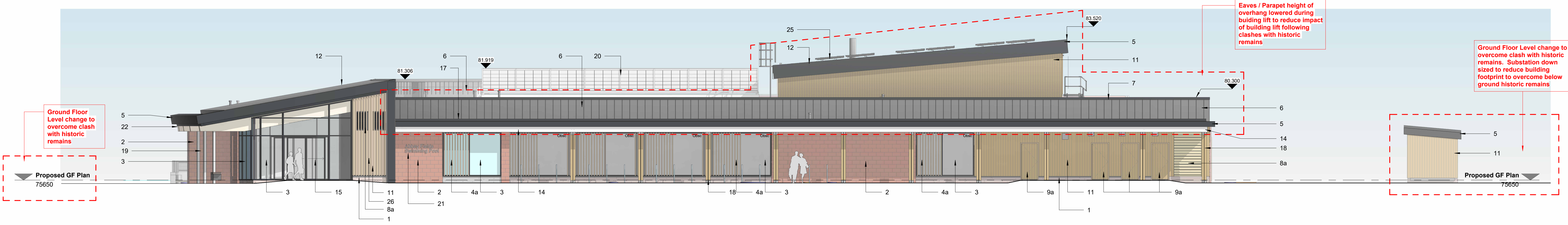
**ENVELOPE MATERIALS KEY:**

- 1 - In situ concrete plinth course, natural finish.
- 2 - Facing stonework, 100mm thick random coursed red sandstone. Fine tooled Vertical joints can be different. Mortar to be flush jointed, Colour matched to red sandstone.
- 3 - PPC aluminium framed, double glazed, thermally broken curtain walling system, colour 7021 (opens where indicated, hatching indicates glass spandrel), (Obsc indicates obscured glazing)
- 4a - 100 x 50mm Vertical format brise soleil (timber finish western red cedar) set in front of PPC aluminium curtain walling (as per 3) - timber fin detailing
- 4b - 70 x 44mm Vertical format brise soleil (timber finish western red cedar) set in front of PPC aluminium curtain walling (as per 3) - timber fin detailing
- 5 - PPC Aluminium feature flashing & fascia system, colour Ral 7021 - 3mm PPC Aluminium sheet.
- 6 - Standing seam zinc cladding, Single lock standing seam cladding - Colour Natural.
- 7 - High performance single ply membrane roofing system to new flat roof areas & parapets - Light Grey
- 8a - PPC Aluminium Louvre to be set behind expressed timber louvre.
- 8b - Expressed Timber external louvre / plant screening - PPC Aluminium Louvre to be set behind expressed timber louvre. Louvre system to be demountable to plant screen for access.
- 9 - PPC external steel doors, colour Ral 7021
- 9a - PPC external steel door with vertical timber cladding to match adjacent walling over clad
- 9b - PPC external steel door with vertical timber cladding to match adjacent walling. Demountable louvres above clad with hardwood feature battens.
- 10 - PPC aluminium framed, double glazed, thermally broken, sliding/folding screen, colour Ral 7021
- 11 - Vertical format cladding plank, Accoya timber cladding - RW119 Profile - Secret fixed (Timber to not have stain applied - Timber to naturally weather)
- 12 - Aluminium standing seam built up roof system - Stucco embossed (mill finished)
- 13 - Facing red brickwork - Mortar colour mid grey
- 14 - Proprietary render system to cement particle board - Ral 9016
- 15 - PPC Aluminium framed external glazed doors, frame colour Ral 7021
- 16 - Timber louvre panel doorset integrated to with demountable louvre panels either side. Vertical format brise soleil (timber finish - Western Red Cedar)
- 17 - High performance single ply membrane roofing system to new flat roof areas & parapets - Light Grey
- 18 - Steel columns with feature hardwood cladding (timber finish - Western Red Cedar)
- 19 - Steel CHS columns with paint finish, colour Ral 7047
- 20 - GRP Twin skinned translucent glazed rooflight system - Kalwall "Clearspan" translucent skylight system - aluminium #72
- 21 - Brushed steel cutout signage
- 22 - Glulam roof beam natural Coloured
- 23 - PPC Aluminium framing Ral 7021 with Western Red Cedar horizontal blade brise soleil canopy system Western Red Cedar
- 24 - Vertical timber slats fence to match external timber cladding to main building
- 25 - Photovoltaic panel fixed to standing seam roofing system
- 26 - 44 x 50mm Feature battens fixed to Vertical timber cladding. Timber finish - Western Red Cedar. Feature fins to appear continuous. Bracket system to be used over curtain walling elements with fins continuing to timber clad areas.



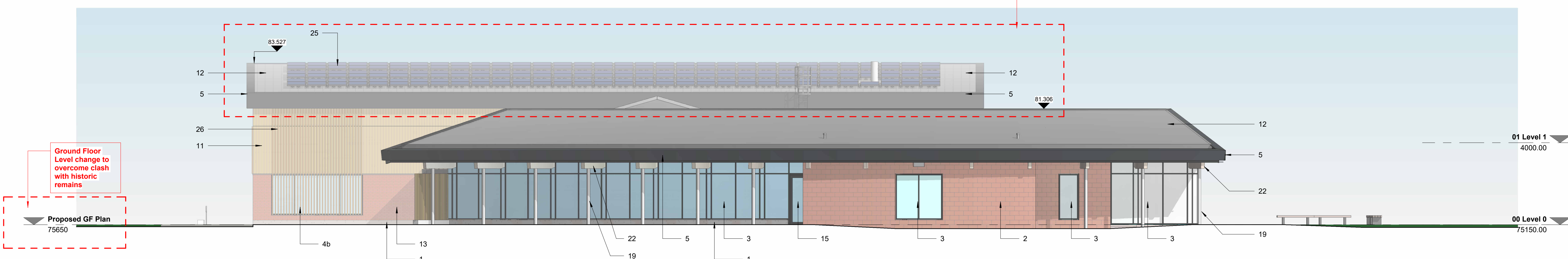
**North Elevation - Proposed**

1:100



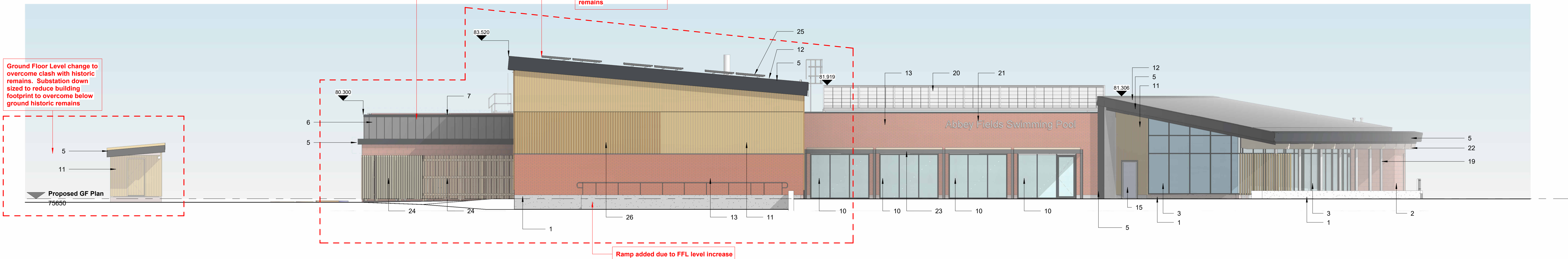
**East Elevation - Proposed**

1:100



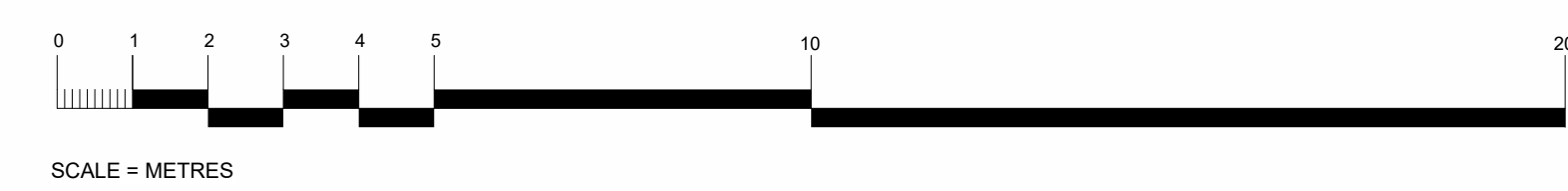
**South Elevation - Proposed**

1:100



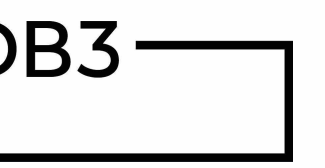
**West Elevation - Proposed**

1:100



P02 270923	PLANNING ISSUE	PW	DH
P01 200223	FIRST ISSUE	PW	DH
Rev	Date	Description	By

**PLANNING**



LEEDS  
10 South Parade, Leeds, LS3 5QS  
Tel: 0113 244 2931 www.dentondb3.com



CLIENT  
WARWICK DISTRICT COUNCIL

PROJECT  
ABBAY FIELDS SWIMMING POOL

TITLE  
PROPOSED ELEVATIONS 1

DATE	SCALE	DRW	CHK	STATUS
11/06/2021	1:100	DM	DM	ISSUED FOR PERMIT

12963 - DB3 - B01 - Z2 - D - A - 2020 - 53 P02

AKF - DB3 - SP - Z2 - D - A - 2020 - 53 P02