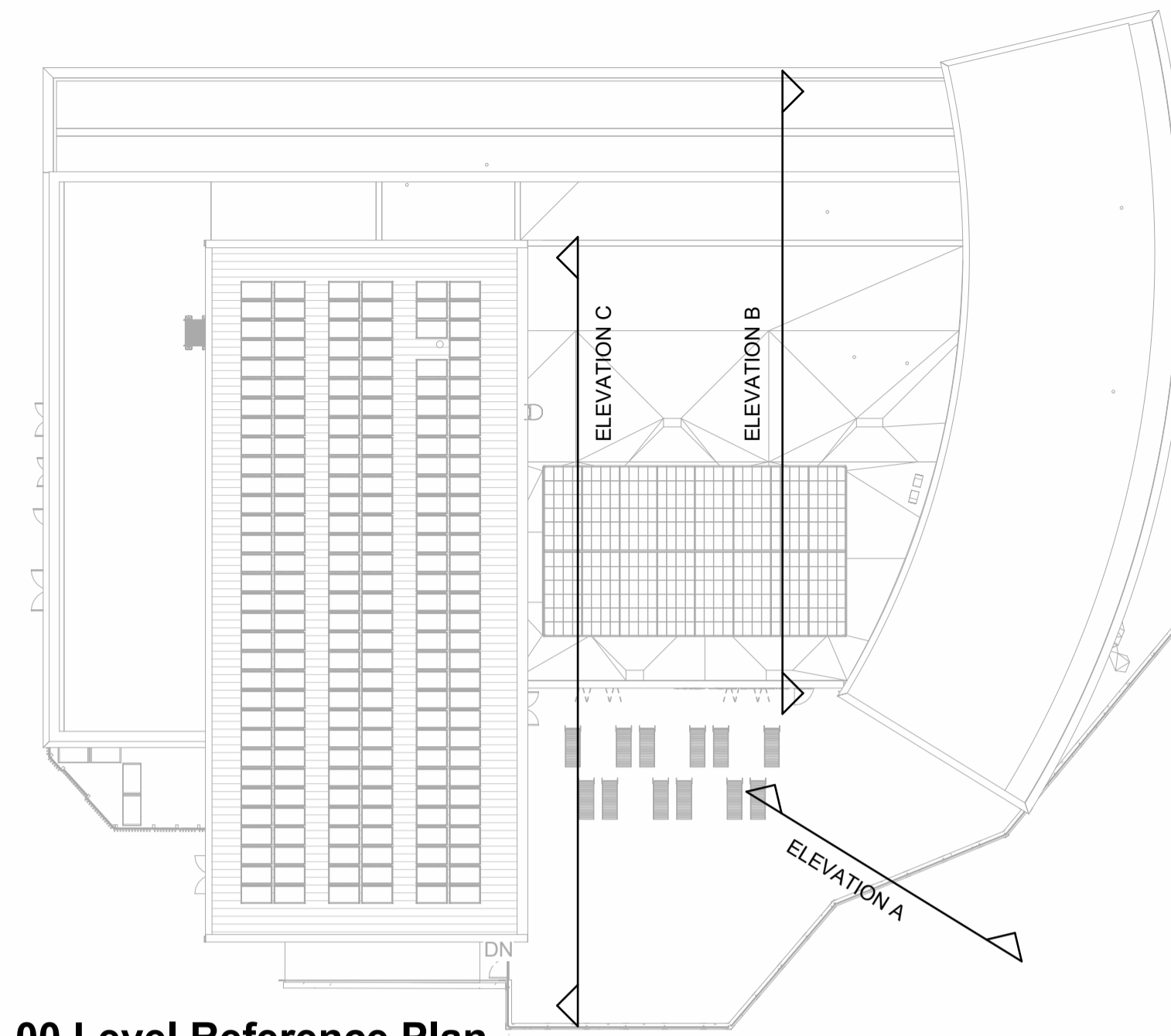
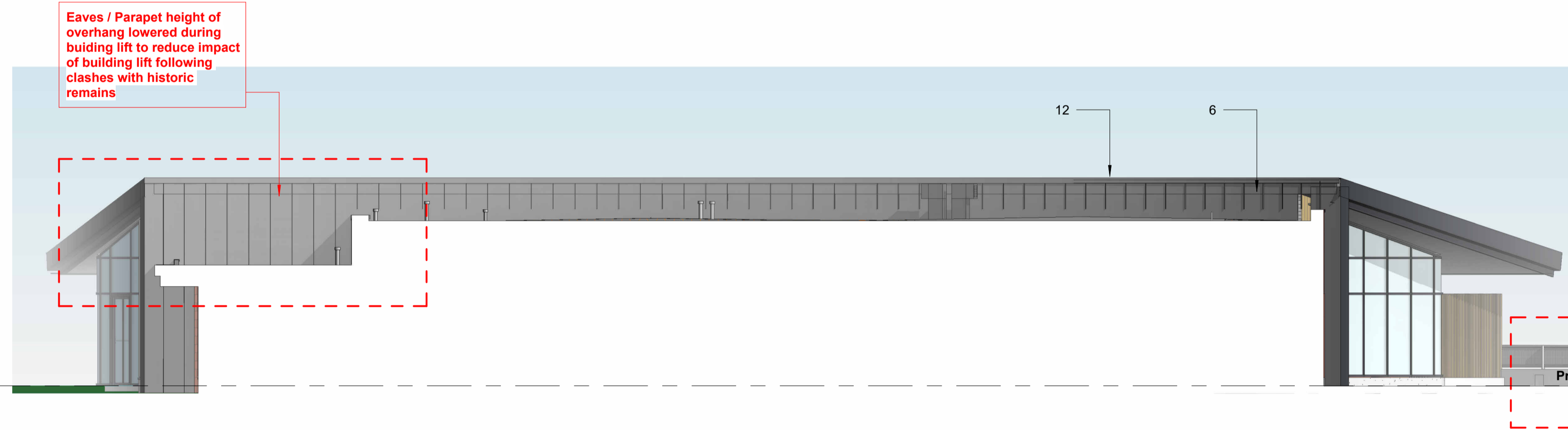


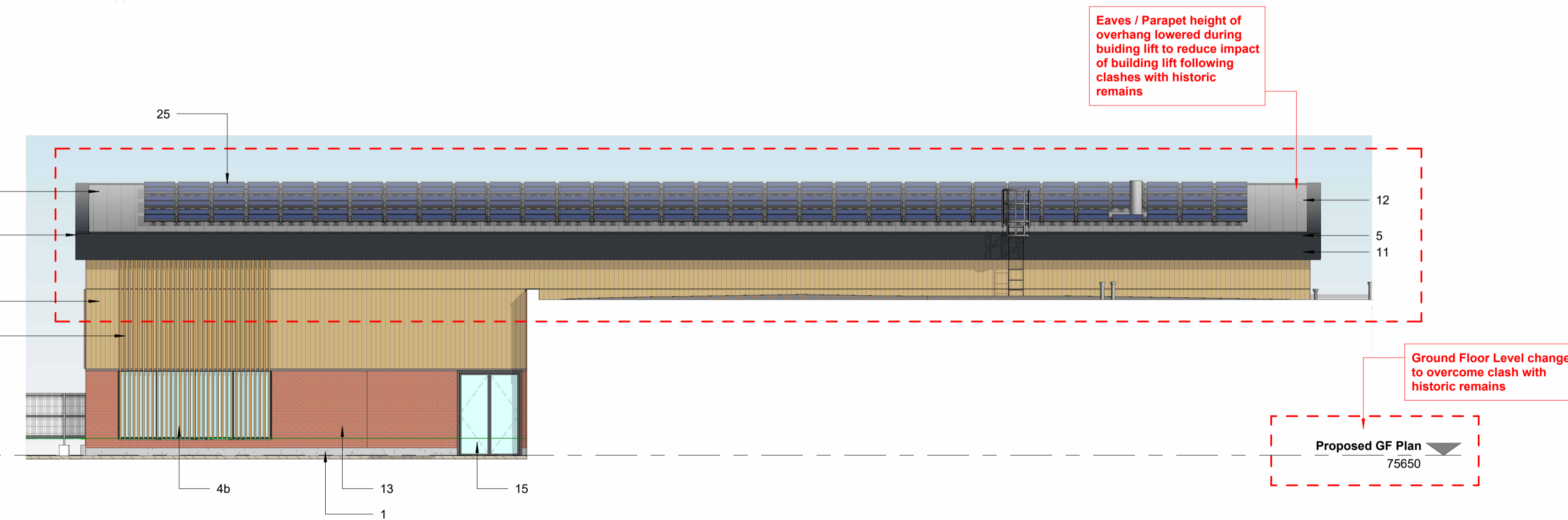
Elevation A
1 : 100



00 Level Reference Plan
1 : 300



Elevation B
1 : 100



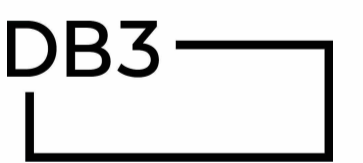
Elevation C
1 : 100

ENVELOPE MATERIALS KEY:

- 1 - In situ concrete plinth course, natural finish.
- 2 - Facing stonework, 100mm thick random coursed red sandstone. Fine tooled Vertical joints can be different. Mortar to be flush jointed, Colour matched to red sandstone.
- 3 - PPC aluminium framed, double glazed, thermally broken curtain walling system, colour 7021 (openers where indicated, hatching indicates glass spandrel), (Obsc indicates obscured glazing)
- 4a - 100 x 50mm Vertical format brise soleil (timber finish western red cedar) set in front of PPC aluminium curtain walling (as per 3) - timber fin detailing
- 4b - 70 x 44mm Vertical format brise soleil (timber finish western red cedar) set in front of PPC aluminium curtain walling (as per 3) - timber fin detailing
- 5 - PPC Aluminium feature flashing & fascia system, colour Ral 7021 - 3mm PPC Aluminium sheet.
- 6 - Standing seam zinc cladding, Single lock standing seam cladding - Colour Natural.
- 7 - High performance single ply membrane roofing system to new flat roof areas & parapets - Light Grey
- 8a - PPC Aluminium Louvre to be set behind expressed timber louvre.
- 8b - Expressed Timber external louvre / plant screening - PPC Aluminium Louvre to be set behind expressed timber louvre. Louvre system to be demountable to plant screen for access.
- 9 - PPC external steel doors, colour Ral 7021
- 9a - PPC external steel door with vertical timber cladding to match adjacent walling over clad
- 9b - PPC external steel door with vertical timber cladding to match adjacent walling. Demountable louvres above clad with hardwood feature battens.
- 10 - PPC aluminium framed, double glazed, thermally broken, sliding/folding screen, colour Ral 7021
- 11 - Vertical format cladding plank, Accoya timber cladding - RW119 Profile - Secret fixed (Timber to not have stain applied - Timber to naturally weather)
- 12 - Aluminium standing seam built up roof system - Stucco embossed (mill finished)
- 13 - Facing red brickwork - Mortar colour mid grey
- 14 - Proprietary render system to cement particle board - Ral 9016
- 15 - PPC Aluminium framed external glazed doors, frame colour Ral 7021
- 16 - Timber louvre panel doorset integrated to with demountable louvred panels either side. Vertical format brise soleil (timber finish - Western Red Cedar)
- 17 - High performance single ply membrane roofing system to new flat roof areas & parapets - Light Grey
- 18 - Steel columns with feature hardwood cladding (timber finish - Western Red Cedar)
- 19 - Steel CHS columns with paint finish, colour Ral 7047
- 20 - GRP Twin skinned translucent glazed rooflight system - Kalwall "Clearspan" translucent skylight system - aluminum #79
- 21 - Brushed steel cutout signage
- 22 - Glulam roof beam natural Coloured
- 23 - PPC Aluminium framing Ral 7021 with Western Red Cedar horizontal blade brise soleil canopy system Western Red Cedar
- 24 - Vertical timber slats fence to match external timber cladding to main building
- 25 - Photovoltaic panel fixed to standing seam roofing system
- 26 - 44 x 50mm Feature battens fixed to Vertical timber cladding. Timber finish - Western Red Cedar). Feature fins to appear continuous. Bracket system to be used over curtain walling elements with fins continuing to timber clad areas.

P02	270923	PLANNING ISSUE	PW	DH
P01	200323	FIRST ISSUE	PW	DH
Rev	Date	Description	By	Chk

PLANNING



LEEDS
10 South Parade, Leeds, LS1 5QS
Tel: 0113 244 2931 www.darntonb3.com



CLIENT
WARWICK DISTRICT COUNCIL

PROJECT
ABBEY FIELDS SWIMMING POOL

TITLE
PROPOSED ELEVATIONS 2

CREATION DATE	SCALE @ A1	DRN	CHK	STATUS
05/11/20	As indicated	PW	DH	S3

DB3 SHEET NO. REVISION

12943 - DB3 - B01 - ZZ - DR - A - 2020 P02

PROJECT NO/ORIGINATOR/ZONE/LEVEL/TYPE/ROLE/NUMBER

KIER SHEET NO. P02

AFK - DB3 - SP - ZZ - D - A - 2001 - S3 P02

PROJECT ORIGINATOR/FUNCTION/LEVEL/TYPE/ROLE/NUMBER/STATUS/REVISION

© COPYRIGHT. ALL RIGHTS RESERVED. THIS DRAWING MUST BE USED IN CONJUNCTION WITH ALL OTHER RELEVANT DRAWINGS AND INFORMATION. ANY OCCURRENCE OF THIS BE SUBJECT TO CONTRACTED CONDITIONS. THE DRAWING OR INFORMATION MUST NOT BE USED FOR CONSTRUCTION UNLESS EXPRESSLY PERMITTED FOR CONSTRUCTION. DO NOT SCALE OFF DRAWINGS. USE DIMENSIONS.

PLOT DATE: 09/03/2019 10:52:08