

DESIGN NOTES

This drawing is the copyright of The Landscape Service 2017 Limited, all rights reserved. Do not scale from this drawing. All dimensions and levels to be checked. The Landscape Service 2017 Limited do not accept responsibility for any expense, loss, damage of whatsoever nature, however arising from the execution of the work to which it relates.

SURFACE WATER: Hard surfacing to comply with Sustainable Urban Drainage Systems (SUDS) where required and to BS 5852

PERMISSIONS AND REGULATIONS: Comply with the latest revisions of the Health and Safety at Work Act, the Management of Health and Safety at Work Regulations, the Construction, Design and Management Regulations (CDM), the Control of Pesticide Regulations, the EU Biocide Regulations, Plant Protection Products legislation, the Control of Substances Hazardous to Health Regulations (COSHH) and all other relevant Acts, Statutory Instruments, Regulations or Orders. Ensure compliance of employees, sub-contractors and all other persons on site. Provide adequate welfare and first aid facilities. Carry out risk assessments and prepare method statements as appropriate. Ensure safe working methods are used.

It is the client's responsibility to apply for all the relevant permissions before commencing work on site. This includes but not limited to Planning permission, Tree Preservation Orders, Building regulation approval and Party Wall Act.

SERVICES: Before starting work locate the exact position of underground and overhead services by making all necessary investigations. No mechanical digging is to take place within 0.5m of gas or electrical services. Follow the guidance issued by the Utility Authority/Company when working close to underground services.

ELECTRICAL WORK: To BS 7671 and Part P of the Building Regulations.

EXTERIOR LIGHTING FITTINGS: To BS 4533 and BS EN 60598-1.

SOFT LANDSCAPING NOTES

The Client will undertake care of the plants and grass after the work is finished.

INVASIVE NON NATIVE SPECIES: Comply with the *Invasive Non Native Species Horticultural Code of Practice*

GROUND WORKS: To BS 4428 Code of Practice for general landscape operations and BS 8007-1 clause 3.1 - 3.3 for excavation and filling.

PREPARATION FOR PLANT TREES AND SHRUBS:

- Remove inorganic containers.
- Check for and reject any damaged, diseased, poorly rooted, pest infested, wrongly identified plants, or plants not complying with all the requirements of the plant list (unless previously agreed).
- Carefully prune any minor root damage.
- Plant in previously prepared pits and planting areas in position shown on the drawings or in the absence of drawings space evenly at the rate specified.
- In holes large enough to allow adequate root spread and tease out congested root balls of container grown plants.
- Excavate holes at least 100mm below the root system.
- Set plants so that their original soil level matches the new surrounding ground and with their best side displayed.
- The backfill is to be the excavated (pre-prepared) soil and evenly worked round the roots and well-heeled in leaving the top slightly proud of the existing level to allow for settlement.

SUPPLY & HANDLING OF TREES & PLANTS: Comply with the *National Plant Specification (NPS)* and the *Code of Practice for Plant Handling (CPSH)* which is incorporated in the *National Plant Specification* (available free at www.csdhub.com).

NURSERY STOCK: In accordance with the plant list and as specified in the *National Plant Specification (NPS)*, available free at www.csdhub.com.

PLANT FAILURES: All plants supplied and planted by the Contractor including trees, which fail to thrive within the period for the correction of faults shall be replaced with the same species to match the size of adjacent plants of the same species at the next suitable planting season, unless otherwise agreed.

IMPORTED TOPSOIL TO BE: To BS 3882 Multipurpose natural (not manufactured) topsoil.

ORGANIC MATTER: Apply and lightly dig into the surface of planting areas with well-rotted farmyard manure at a rate of 5kg/m².

IMMEDIATELY AFTER PLANTING: Lightly prune back any damaged or malformed growth. Rake soil to an even, fine tith to the required levels.

MULCHING: Fork soil to a medium tith in the areas to be mulched. Apply 100mm depth of mulch after watering.

BULBS: Grouped at random for naturalised bulbs. With the base of bulb at the correct depth for the species and in contact with the soil, with fine, stone-free topsoil backfill.

TREE STAKES: 75mm minimum diameter, free of bark, with one end pointed.

STAKING FOR TREES: Drive stake upright minimum 600mm depth into excavated planting pit before planting, close to the tree stem on the windward side. Cut off minimum 600mm above ground and secure tree with ties and spacers at the top of the stake.

WATERING PIPES: Provide perforated watering pipes in a circle around the top of the root ball.

BACKFILLING: To be the excavated (pre-prepared) soil. The backfill is to be evenly worked round the roots and well-heeled in leaving the top slightly proud of the existing level to allow for settlement.

TREE WORK: To be to BS 3998 *Recommendations for Tree Work* unless otherwise agreed.

PROTECTIVE FENCING: Before stripping or clearance of the site, provide, erect and maintain barriers to form Construction Exclusion Zones in accordance with BS 5837, using welded mesh panels securely attached to a braced scaffold pole vertical and horizontal framework as BS 5837 Figure 2. Clear away and make good as necessary when all the work is complete.

GROUND PREPARATION FOR WILD FLOWER MEADOWS: Harrow to reduce soil to a good tith not exceeding 25mm.

SOILING WILD FLOWER SEED MIX: Ensure even mixing of all seed varieties at all times. Seed spread to manufacturers recommendation.

TURF QUALITY: to be BS 3969 with herbicide applied 1 to 3 months before lifting, 900 x 300 minimum size, even thickness, max 10mm thick thatch and 7-18mm thick topsoil. Supply a sample to site for inspection before delivery.

PREPARATION FOR TURFING:

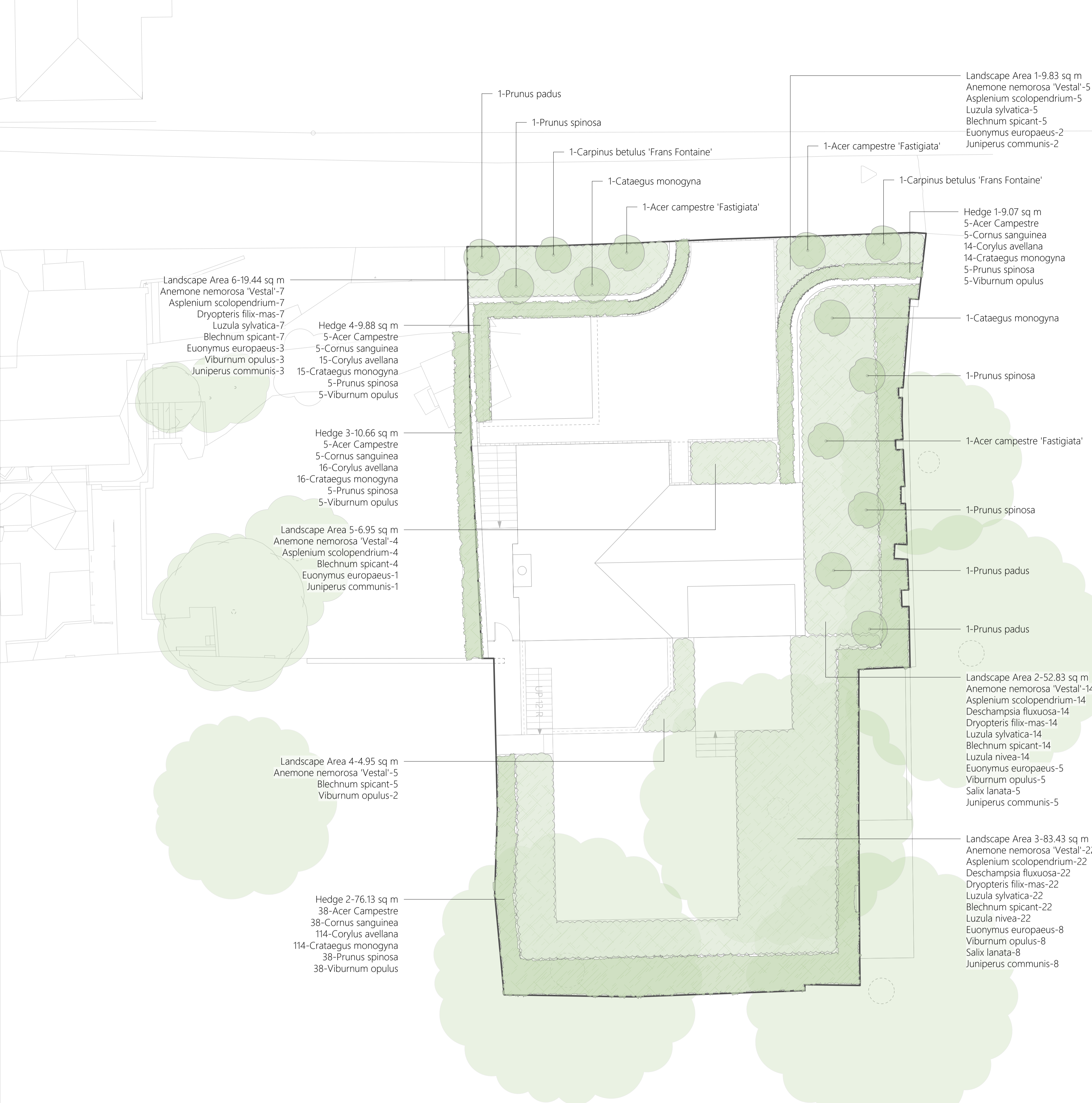
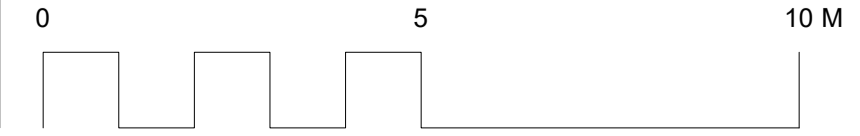
- Remove all weeds, rubbish and stones over 30mm in any dimension.
- Cultivate topsoil to a minimum depth of 100mm.
- Reduce top 30mm to a fine tith and on clay or heavy loam soils work in 50% of coarse sharp sand to produce a 60mm layer.

LAYING TURF:

- Transport turf over close butted timber planks.
- Lay turf in consecutive rows.
- Lay turf from timber planks protecting previously laid turf.
- Lay turf close butted breaking the joint in alternate rows.
- Use only whole turves at margins.
- Consolidate lightly with wooden beaters.
- Brush in finely sieved topsoil to fill all joints.
- Peg turfs with wooden pegs on slopes exceeding 30°.
- Ensure final surface is 20mm above any adjacent hard surface.

FERTILISER: Dress areas to be grass seeded with N7-P7-K7 fertiliser at a rate of 50g/m² and work into the top 30mm of tith 7 days before sowing and water in well. Not applicable to wildflower meadow areas.

SOILING GRASS SEED: Ensure even mixing of all seed varieties at all times. Use a broadcast machine to spread the seed in the quantity specified. Apply in two equal passes in transverse directions. Rake in the seed and roll with a lightweight roller.



Key

- Planting
- Hedge
- Lawn
- Block Paving
- Gravel
- Paving
- Decking
- Existing Tree
- New Tree
- Remove Tree

Plant List				
ID	Qty	Latin Name	Scheduled Size	Remarks
Shrubs	19	Juniperus communis	10L	
Shrubs	71	Viburnum opulus	10L	
Shrubs	13	Salix lanata	10L	
Shrubs	19	Euonymus europaeus	10L	
Shrubs	53	Prunus spinosa	Bare Root	
Shrubs	53	Cornus sanguinea	Bare root	
Shrubs	53	Acer Campestre	Bare root	
Shrubs	159	Corylus avellana	Bare root	
Shrubs	159	Crataegus monogyna	Bare root	
Perennials	36	Luzula nivea	5L	
Perennials	57	Anemone nemorosa 'Vestal'	5L	
Perennials	48	Luzula sylvatica	5L	
New Tree	3	Prunus spinosa	Heavy Standard	
New Tree	3	Prunus padus	Heavy Standard	
New Tree	2	Cataegus monogyna	Heavy Standard	
New Tree	3	Acer campestre 'Fastigiata'	Heavy Standard	
New Tree	2	Carpinus betulus 'Frans Fontaine'	Heavy Standard	
Grasses	36	Deschampsia fluxuosa	5L	
Ferns	52	Asplenium scolopendrium	5L	
Ferns	43	Dryopteris filix-mas	5L	
Ferns	57	Blechnum spicant	5L	



THE LANDSCAPE SERVICE

Landscape & Garden Design

T: 02381 980022
 E: info@thelandscape-service.com
 W: www.thelandscape-service.com

Site Address
 Land at Rose Cottage
 Newbury Hill, Penton Mewsey
 SP11 0RA

Drawing Title
 Landscape Plan
 Drawing Number
 368 - 2
 Date
 11.07.2023
 Scale
 1:100 @ A1