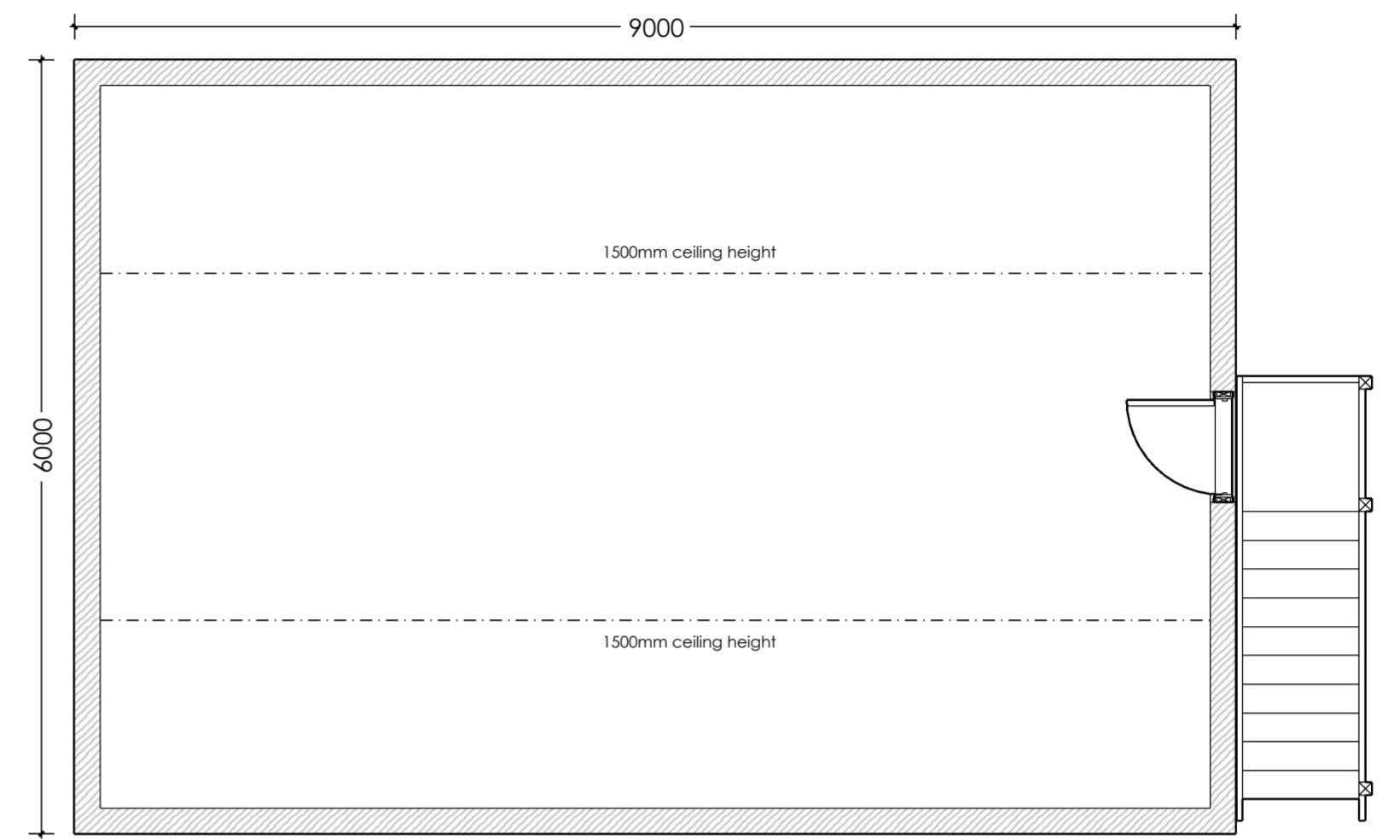
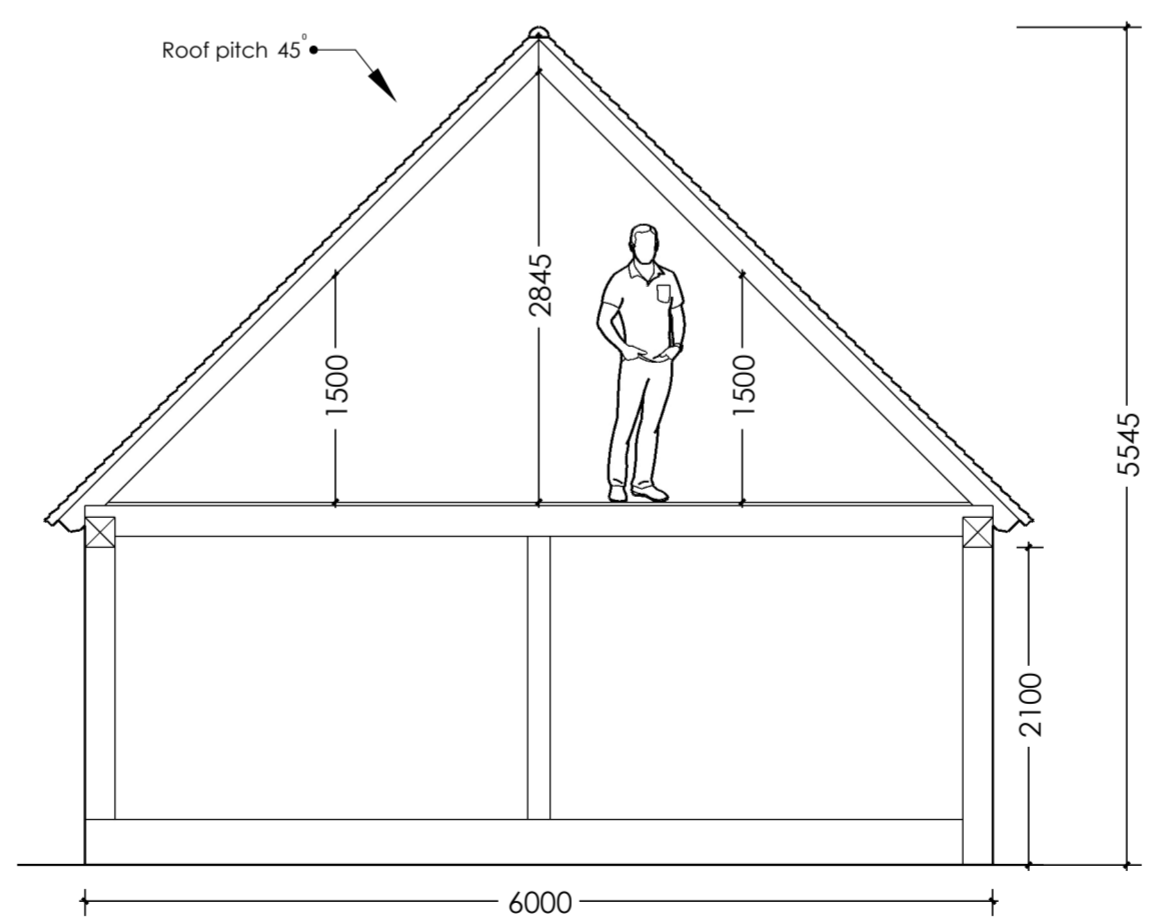


GF Plan

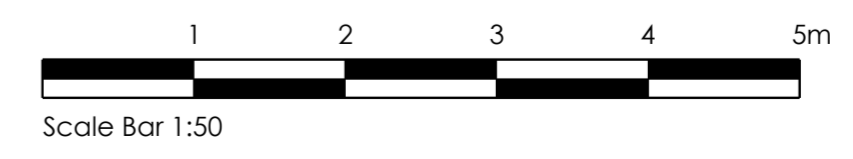


FF Plan



Cross section at left elevation showing useable roof space

Please note:
 Building sits on 300mm high & 215mm wide solid skin brick plinth (Top layer of bricks laid frog side down)
 Front elevation posts/beams are 200 x 200mm
 Rear elevation posts/beams are 200 x 200mm
 Side/tie beam posts are 150 x 150mm
 Rafters are 150 x 50mm
 Studwork 100 x 50mm
 Clearance under front beam 2.1m
 45 degree gable ended roof
 External stairs
 Please see www.swiftoak.com for full terms, conditions & specifications relating to frame manufacture & associated ground works.
 Do not scale from this drawing. These drawings are not for assembly or building control information. Dimensions are provided for planning & estimating purposes. Any discrepancies should be notified to **Swift Oak**.
 Swift Oak is an oak frame manufacturing company; any drawings provided by us are for information only. We consent for you to use our drawings to seek planning consent, however they are not construction drawings. Information & dimensions for products not supplied by Swift Oak (such as windows and access/personnel doors) included in these drawings are shown for illustrative purposes only.



Rev No:	Revision:	Date:
SWIFT OAK - Oak Frame Specialists -		
LOCATION:	CLIENT:	REV:
Planning	N Hickton	1:50 @ A2
DRAWING TYPE:	DRAWING No.:	DATE:
Plan & Spec	NH/001	18.10.23
	DRAWING NAME:	
	Three Bay 9 x 6m Full Height Frame:	