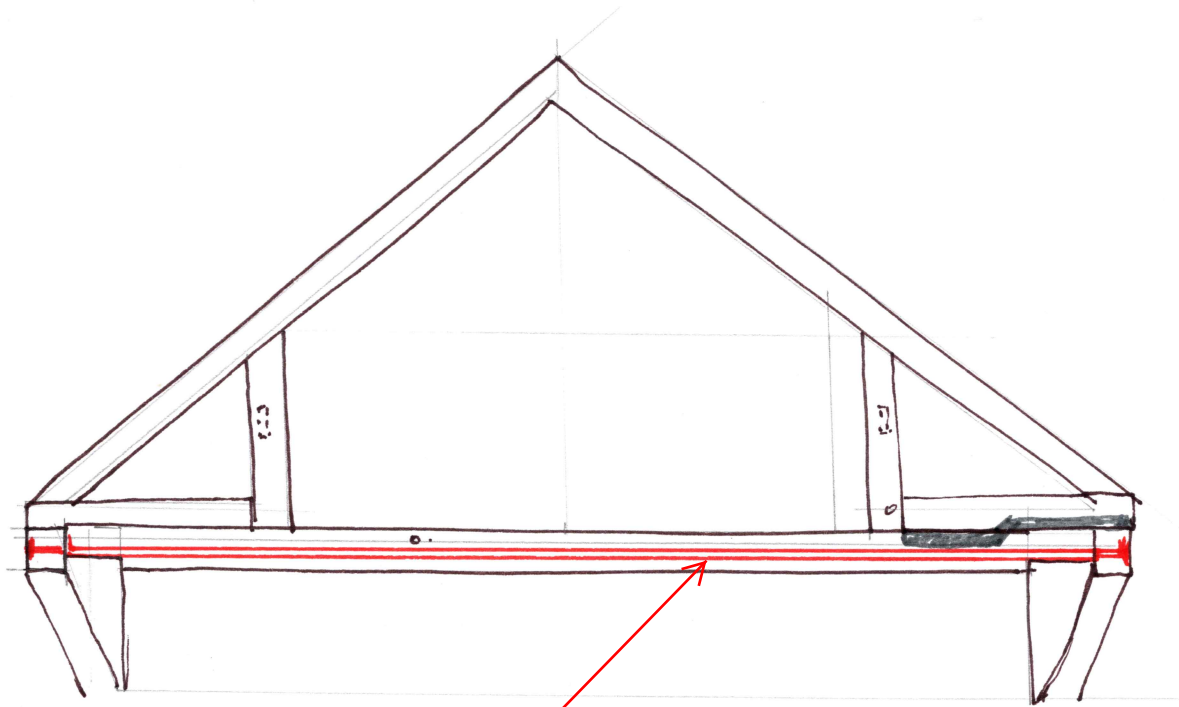
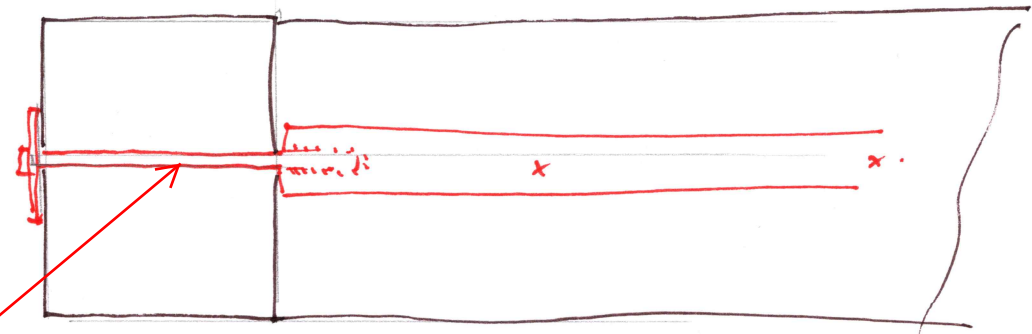


# DETAIL A.



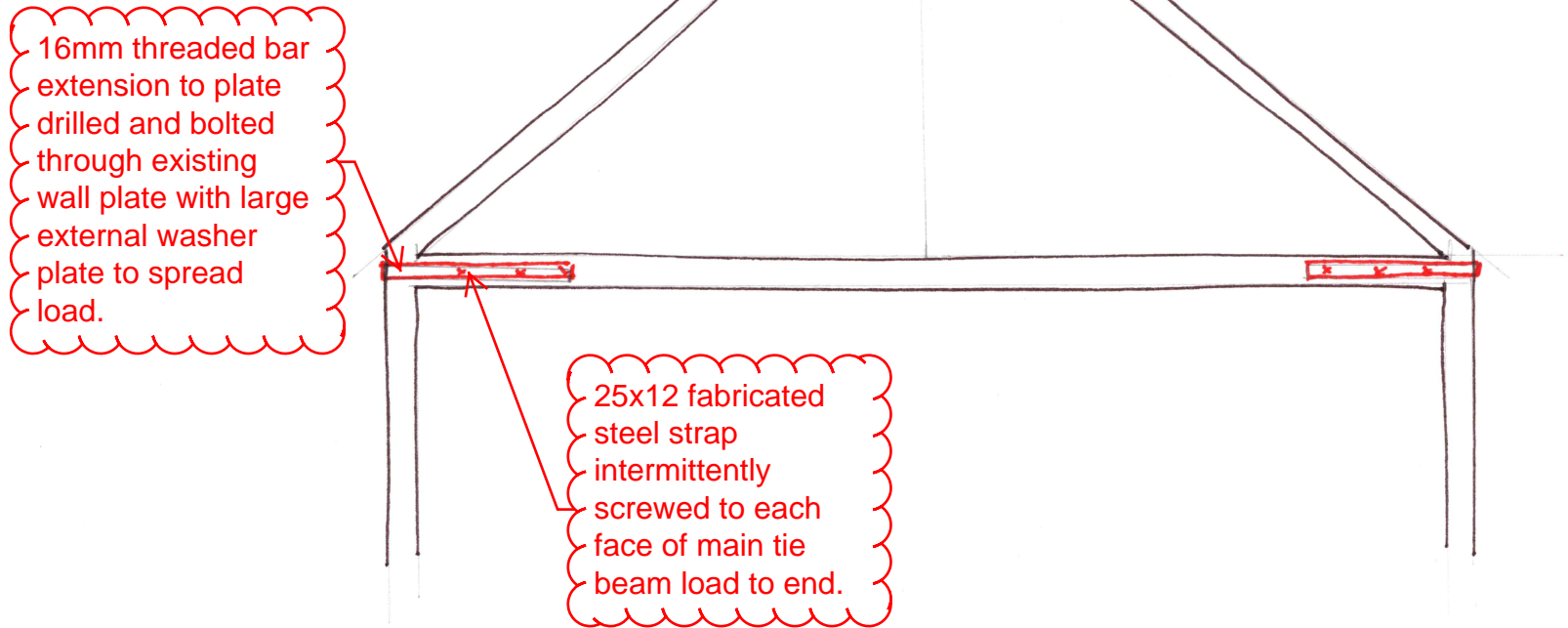
25x12 fabricated steel strap intermittently screwed to each face of main tie beam over full span.

16mm threaded bar extension to plate drilled and bolted through existing wall plate with large external washer plate to spread load.





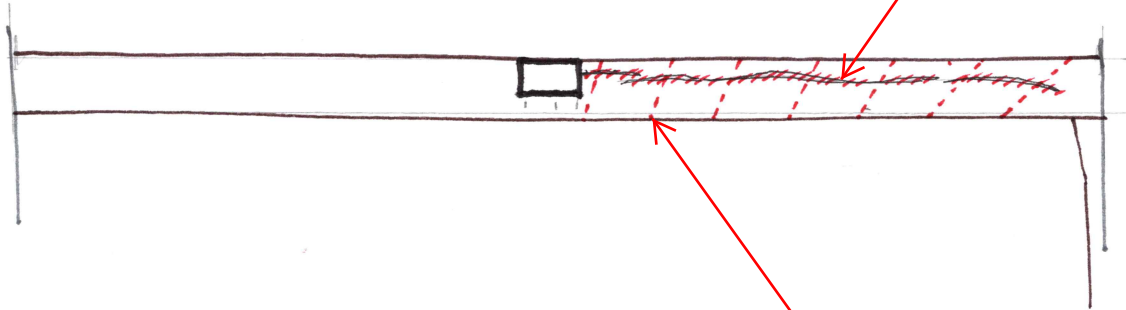
# DETAIL C.



Detail to be used both end of this frame.

# DETAIL 4.

clean out and inject  
heavy shaking to  
beam with timber  
repair resin.



drill and resin bond  
14 number 12mm  
diameter stainless  
steel rods  
diagonally across  
shake in pairs.