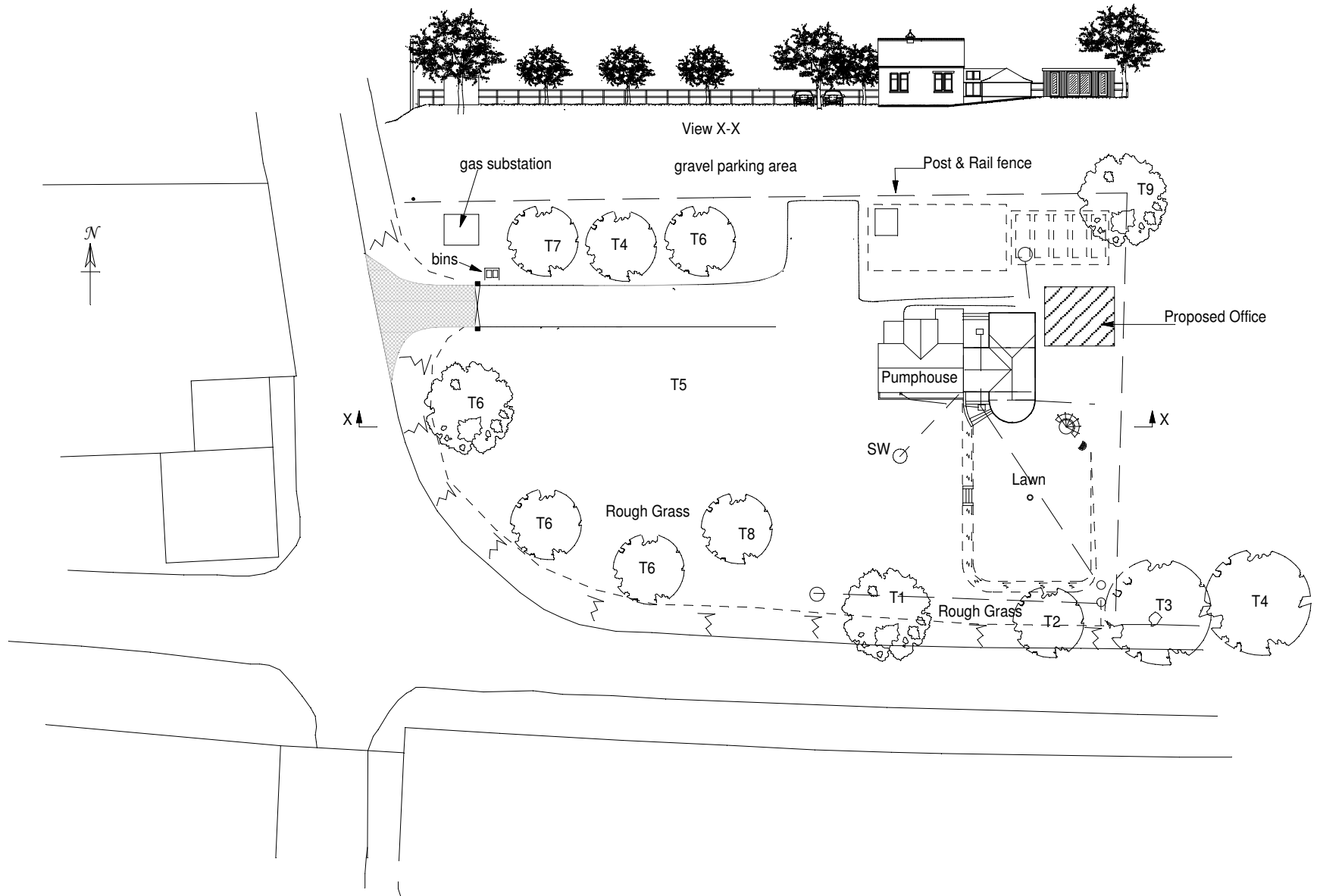



Trees:

- Existing
- T1 Field Maple
- T2 Elm
- T3 Whitebeam
- T4 Prunus
- T5 Field Maple
- T6 Apple
- T7 Cherry
- T8 Pear
- T9 Hazel



Rev	Date	Desc


ADAM POWER
 ASSOCIATES
 Consulting Civil/Structural Engineers
 Church Farmhouse, The Green, Banham, Norfolk NR16 2HW
 tel 01953 887539 fax 01953 887479
 email: mail@adampower.co.uk

The Pumhouse, Skates Hill, Glemsford.
Proposed Garden Office
Block Plan

For.

Job No.	Drg. No.	Scale	Rev.
11/221/GO	BP1	1:500 @ A4	