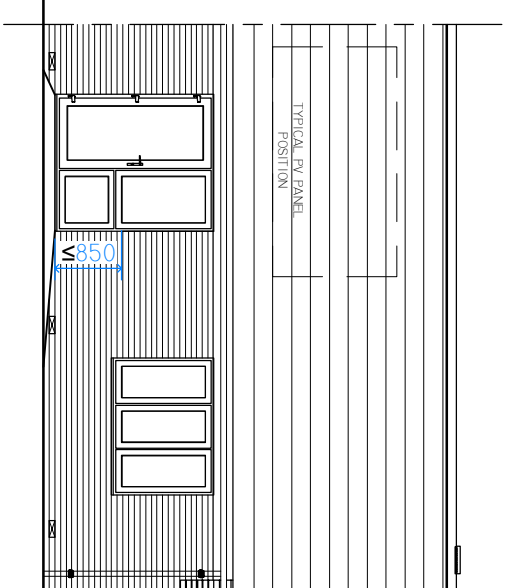
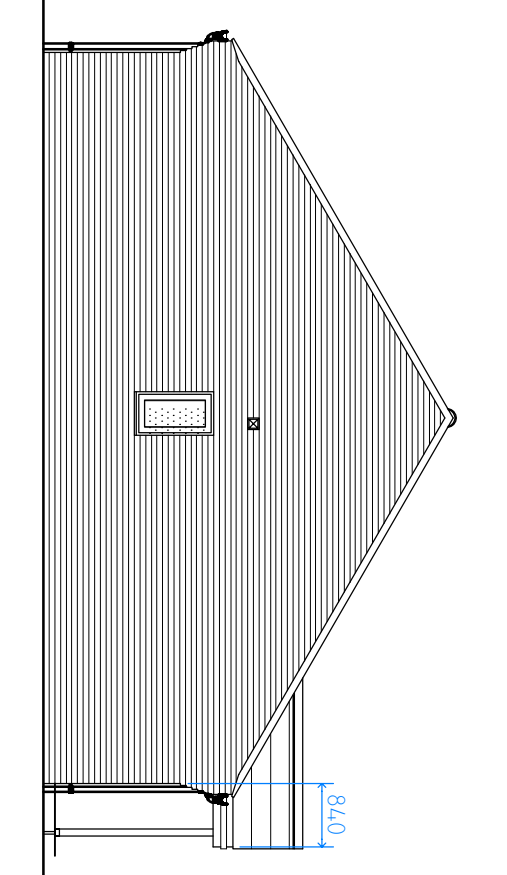


FRONT ELEVATION

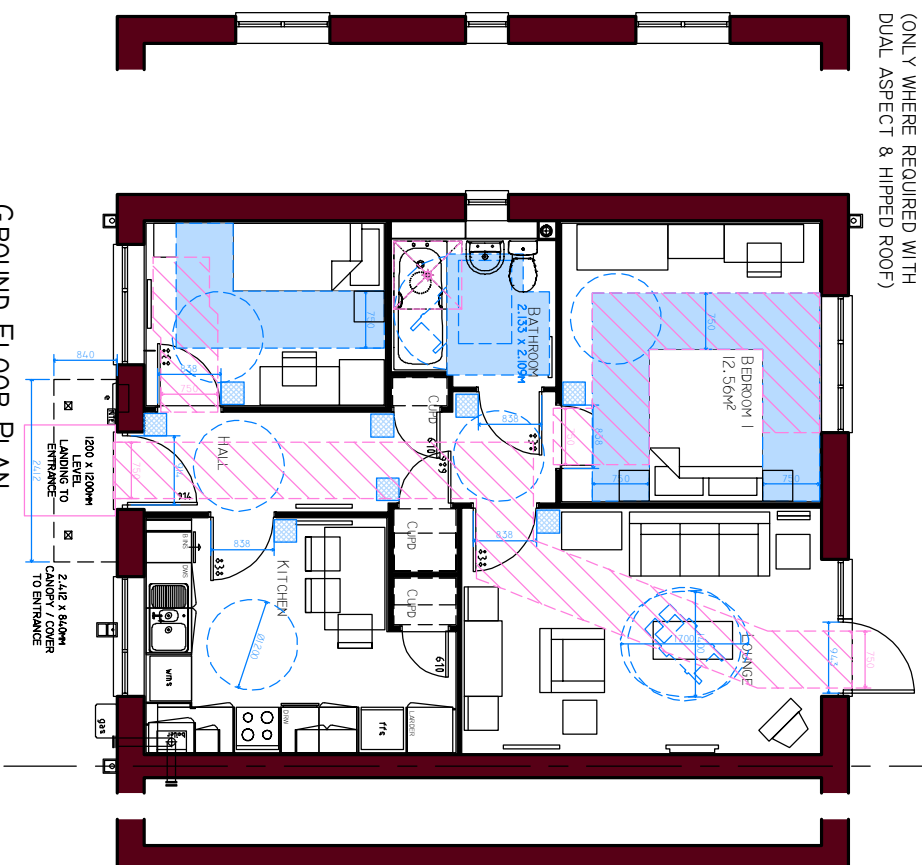


REAR ELEVATION



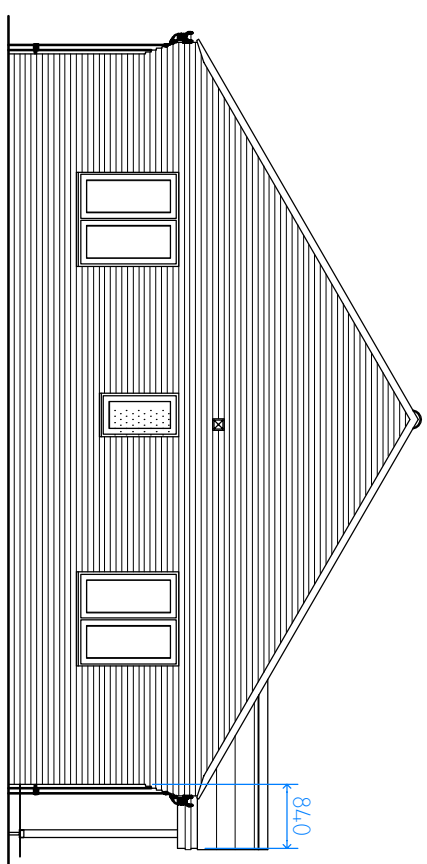
END ELEVATION

ALTERNATIVE END
(ONLY WHERE REQUIRED WITH
DUAL ASPECT & HIPPED ROOF)



ALTERNATIVE END
(DETACHED PLOTS ONLY)

ALT. END ELEVATION (DUAL ASPECT ONLY)



GROUND FLOOR PLAN
GFA 63.26M² (62.30M²)

DIMENSIONS

Please Note: These floor plans only show approximate dimensions for a Typical Partner Home of its type. Within NHBC guidelines, the dimensions for a specific house may vary as each house is built.

GROUND FLOOR		FIRST FLOOR	
Lounge	3.222 x 4.710	Bedroom 1	3.685 x 3.409
Kitchen/Dining	3.102 x 4.097 max 10' 2" x 13' 5"	Bedroom 2	2.415 x 3.160
Bathroom	2.133 x 2.109 max 7' 0" x 6' 11"		

JOB TITLE		49 UNITS @ SEA VIEW WALK, MURTON NDS-36' WORKING DRAWING	
DWG. TITLE		NIFA = 62.30M ² GFA = 63.26M ² (681 SQ.FT.)	
PLANNING DRAWING 'DUO PITCH ROOF' APD PART M : M4(2) COMPLIANCE SKETCH			
DRAWN	LW	CHECKED	-
SCALE	1:100	DATE	25.03.22
DWG. SIZE		DWG. NO.	A3
		M/TON-NDS-36(M4(2))/01	

