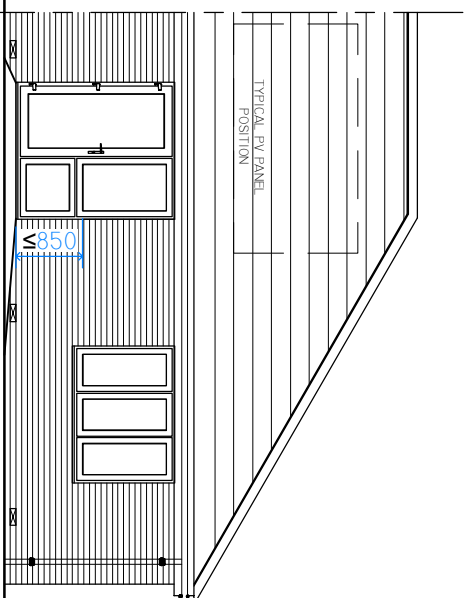
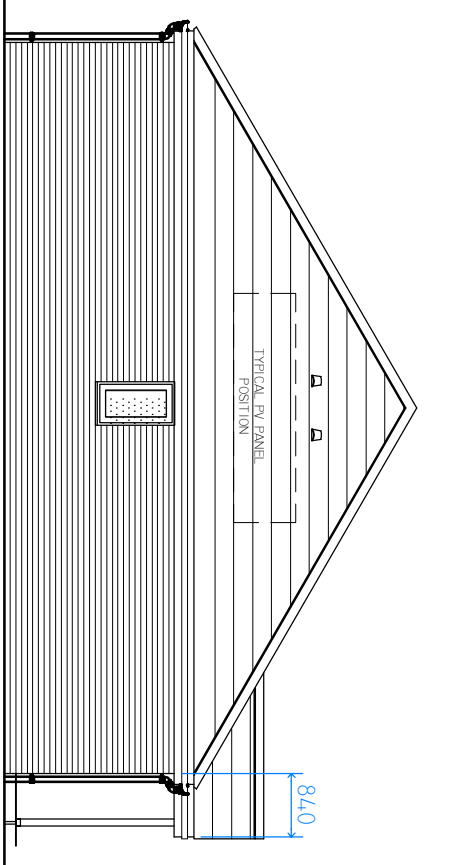


FRONT ELEVATION - HIPPED VARIANT

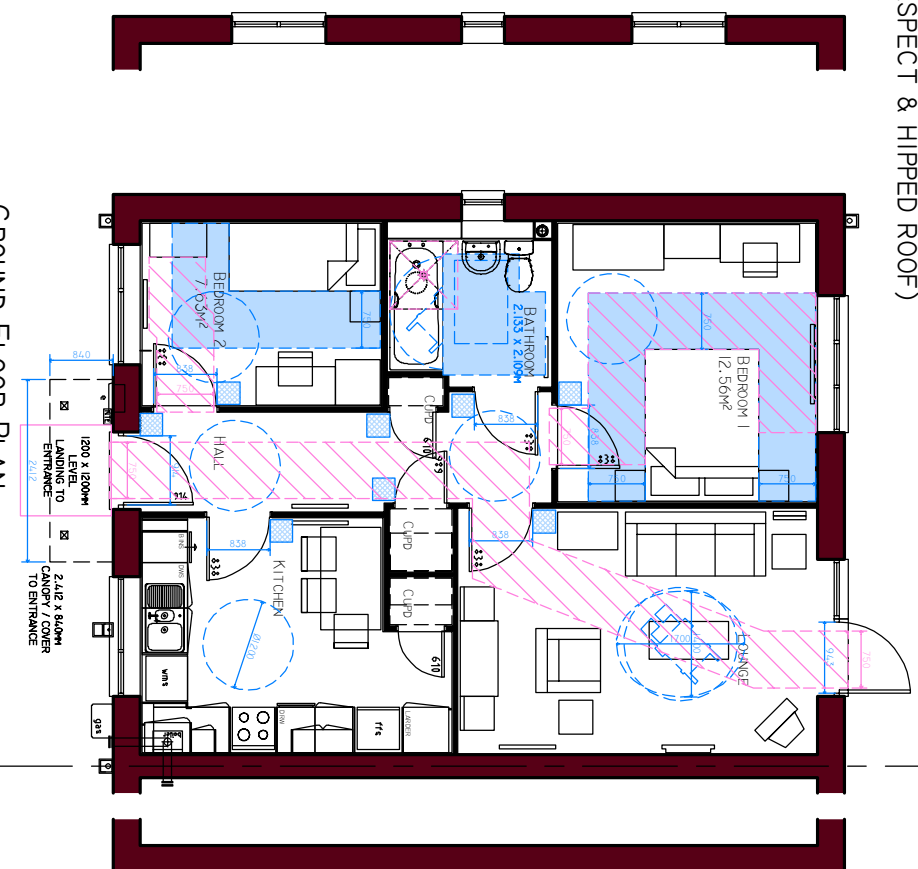


REAR ELEVATION - HIPPED VARIANT



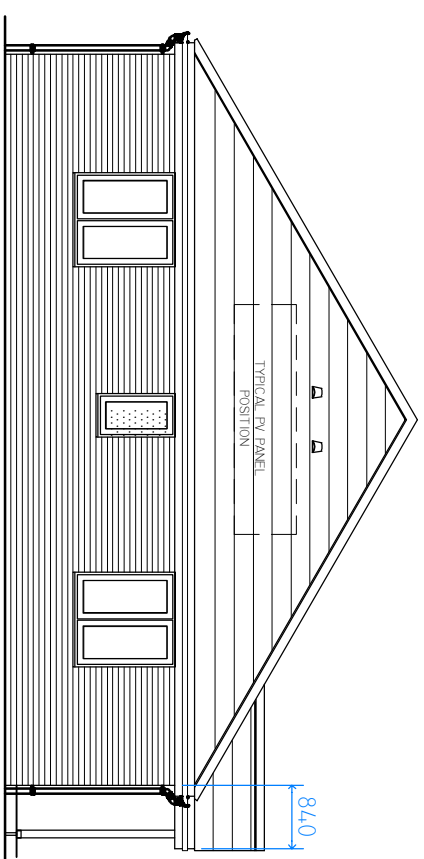
END ELEVATION - HIPPED VARIANT

ALTERNATIVE END
(ONLY WHERE REQUIRED WITH
DUAL ASPECT & HIPPED ROOF)



GROUND FLOOR PLAN
GFA 63.26M² (62.30M²)

ALTERNATIVE END
(DETACHED PLOTS ONLY)




END ELEVATION (DUAL ASPECT ONLY) - HIPPED VARIANT

DIMENSIONS

GROUND FLOOR		FIRST FLOOR	
Lounge	3.222 x 4.710	Bedroom 1	3.685 x 3.409
Kitchen/Dining	3.102 x 4.097 max 10'2" x 13'5"	Bedroom 2	2.415 x 3.160
Bathroom	2.133 x 2.109 max 7'0" x 6'11"		

Please Note: These floor plans only show approximate dimensions for a Typical Partner Home of its type. Within NHBC guidelines, the dimensions for a specific house may vary as each house is built.

REV	DATE	DESCRIPTION	INTL
-	-	-	-



JOB TITLE
4.9 UNITS @ SEA VIEW WALK, MURTON
NDS-36' WORKING DRAWING

NFA = 62.30M²
GFA = 63.26M² (681 SQ.FT.)

DWG. TITLE
PLANNING DRAWING 'HIPPED ROOF'
APD PART M : M4(2) COMPLIANCE SKETCH

DRAWN	CHECKED	DWG. SIZE	DWG. NO.
LW	-	A3	M'TON-NDS-36(M4(2))/02

SCALE 1:100 DATE 25.03.22