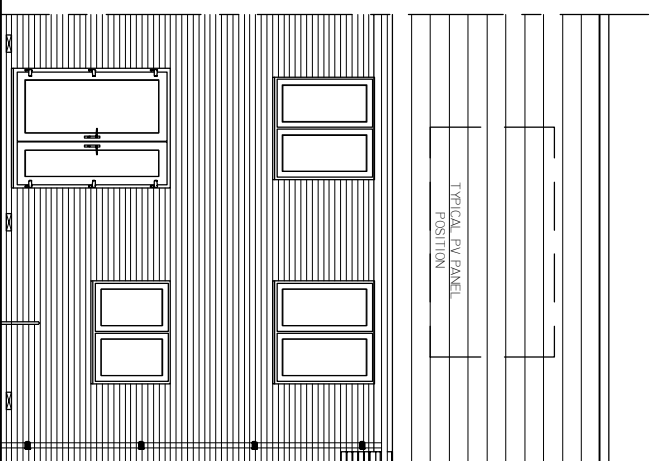
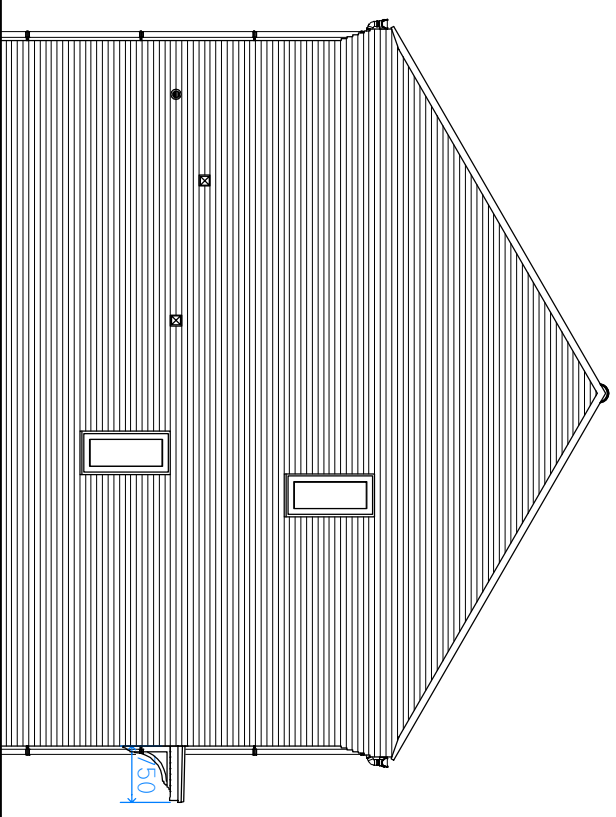


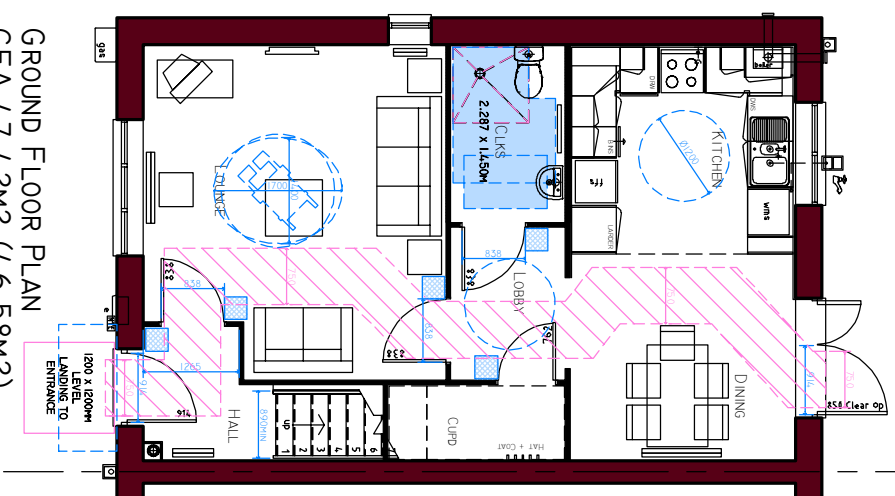
FRONT ELEVATION



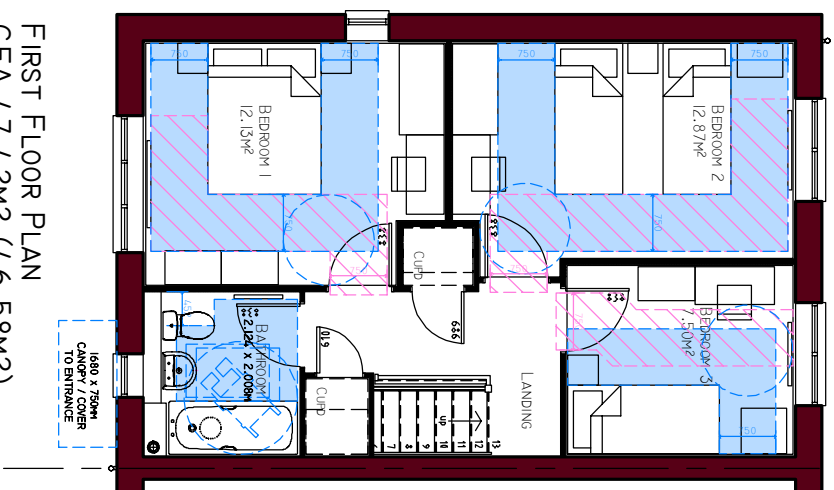
REAR ELEVATION



END ELEVATION



GROUND FLOOR PLAN
GFA 47.42M² (46.58M²)



FIRST FLOOR PLAN
GFA 47.42M² (46.58M²)

DIMENSIONS

GROUND FLOOR		Please Note: These floor plans only show approximate dimensions for a Typical Partner Home of its type. Within NHBC guidelines, the dimensions for a specific house may vary as each house is built.			
Lounge	4.387 x 3.955 max	14' 4" x 12' 11"	Bedroom 1	3.205 x 3.965 max	10' 6" x 13' 0"
Kitchen/Dining	5.440 x 2.936	17' 10" x 9' 7"	Bedroom 2	3.087 x 4.505 max	10' 1" x 14' 9"
Cloaks	2.287 x 1.450	7' 6" x 4' 9"	Bedroom 3	2.505 x 2.995	8' 2" x 9' 9"
			Bathroom	2.124 x 2.008	6' 11" x 6' 7"

REV	DATE	DESCRIPTION	INTL

Partner

JOB TITLE
49 UNITS @ SEA VIEW WALK, MURTON
'NDS-31(M4(2))' WORKING DRAWING

NIFA = 93.16M² NIFA (BAY) = 94.04M²
GFA = 94.84M² (1021 SQ.FT.) GFA (BAY) = 95.72M² (1030 SQ.FT.)
DWG. TITLE

PLANNING DRAWING
APD PART M : M4(2) COMPLIANCE SKETCH

DRAWN	CHECKED	DWG. SHEET DWG. NO.
LW	-	A3

SCALE 1:100 DATE 25.03.22 M/TON-NDS-31(M4(2))/01