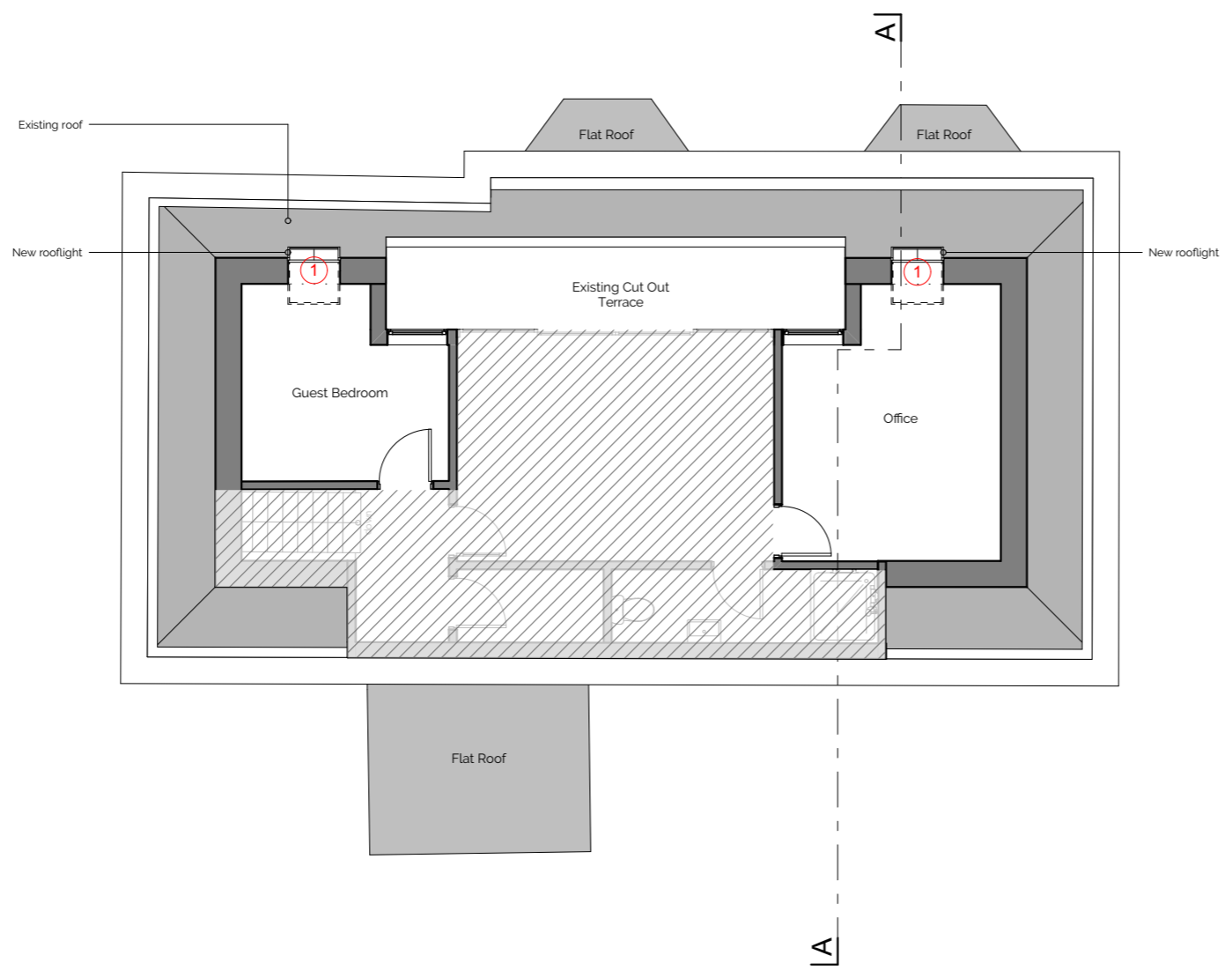


© Copyright: Mattinson Associates Ltd. 2023
 No reproduction, transmission or correspondence to third parties of all or any part of this document or the information it contains is permitted without the prior written consent of Mattinson Associates Ltd. This drawing is not to be scaled for the purpose of setting out. Any discrepancies found in this drawing, or between this drawing and another must be reported to Mattinson Associates Ltd. immediately.

Generic Notes:



Proposed Second Floor Plan 1:100

Rev	Reason	Date	By

PLANNING

**Mattinson
associates.**

+
 The Studio @ The Old Granary
 Ford Farm, Ford Farm Lane
 Whitwell, Ventnor
 Isle of Wight, PO38 2NZ
 Tel +44(0)1983 840953
 Mob +44 (0)7867533776

enquiries@mattinsonassociates.com
 www.mattinsonassociates.com

Client
Mr Tom and Mrs Sophie Howe

Project. Ellacombe	Project No. 3332
Scale. 1:100 @ A3	Date. 03.10.23

Drawing Name
Prp 2nd Floor

Drawing Number
3332(P)110_

Notes

- Materials:**
- Rooflights** - Double glazed Velux Conservation rooflights, openable, colour RAL 9005 matt.
 Guest Bedroom (1no) - 780mm x 1400mm
 Guest Bedroom/Office (1no) - 780mm x 1400mm

Key

