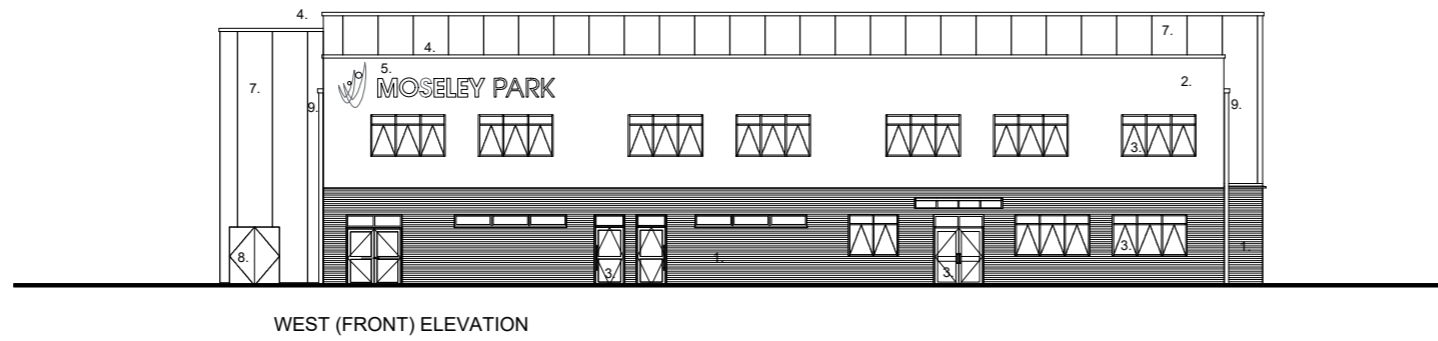
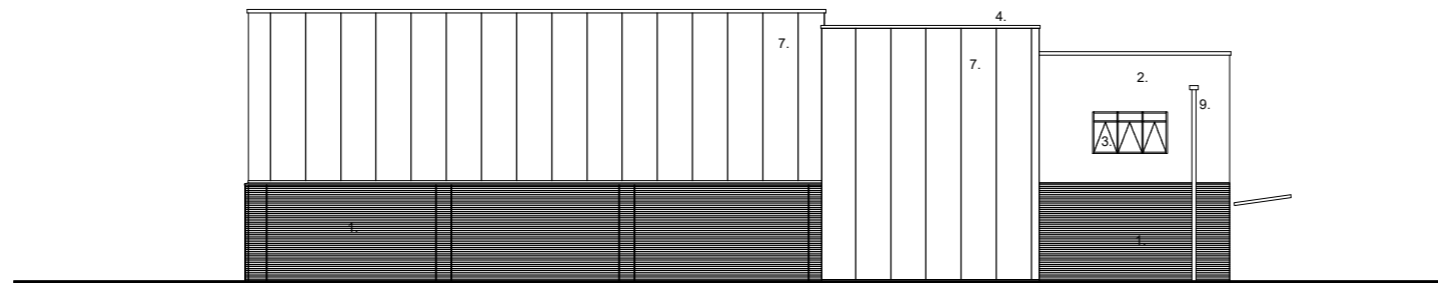


NOTES
 The copyright of this drawing and design is vested in the Architect and must not be copied or reproduced without written consent.
 This drawing to be read in conjunction with the specification and other drawings
 Do not scale to ascertain dimensions
 All dimensions to be checked and verified on site by the responsible contractor prior to commencement of work

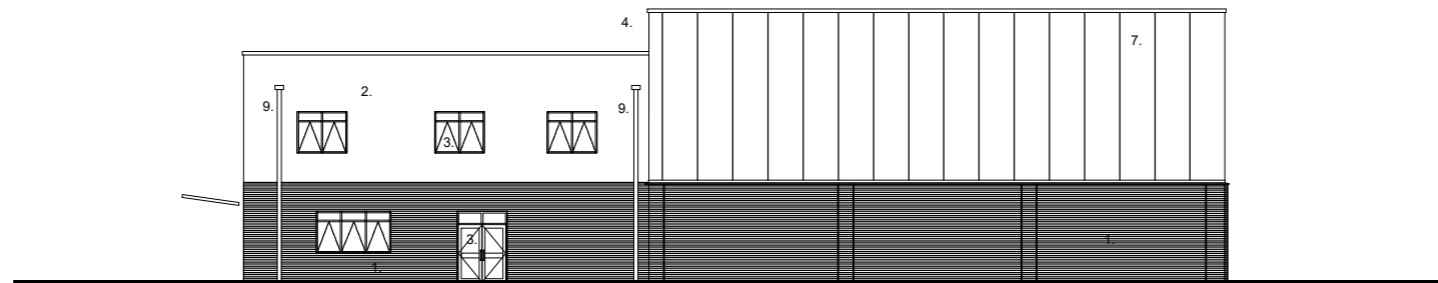


WEST (FRONT) ELEVATION

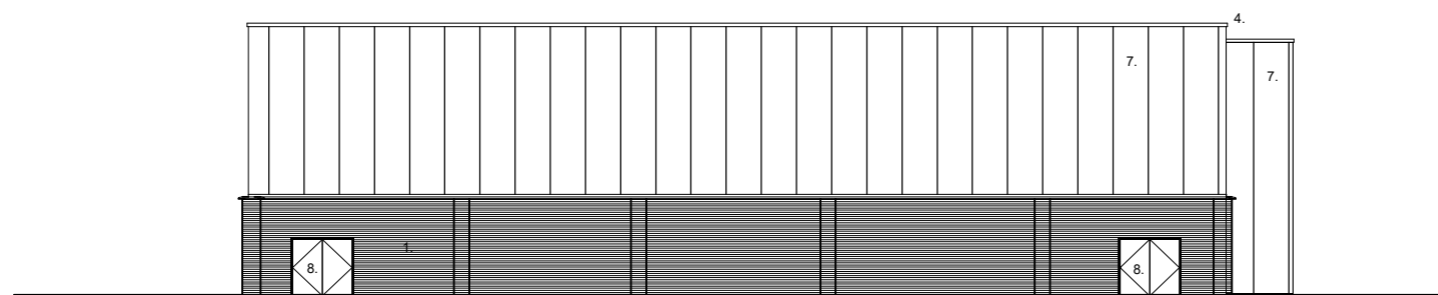
- 1. FACING BRICKWORK – IBSTOCK BEACON SAHARA (BUFF)
- 2. RENDER – WHITE
- 3. PPC ALUMINIUM GLAZING AND DOORS – FRAMES RAL 7012 (GREY)
- 4. PPC ALUMINIUM PARAPET CAPPING – RAL 7012
- 5. STAINLESS STEEL SIGNAGE
- 6. LOUVRES – RAL 7012
- 7. TRANSLUCENT CLADDING - WHITE
- 8. STEEL FIRE ESCAPE DOORS - RAL 7012
- 9. POWDER COATED ALUMINIUM RAINWATER PIPES - RAL 7012
- 10. POLYCARBONATE ENTRANCE CANOPY - RAL 7012



SOUTH (SIDE) ELEVATION




NORTH (SIDE) ELEVATION



EAST (REAR) ELEVATION



B	ELEVATIONS AMENDED TO MATCH NEW SITE PLAN	JA	22/09/23/NA
A	AMENDED FOLLOWING PLAN BEING MIRRORED & CHANGES TO EXTERNAL STAIR ENCLOSURE	JA	21/07/23/NA
Rev	Details	Alt.	Date/Chk
CLIENT	CENTRAL LEARNING PARTNERSHIP TRUST	SCALE	SIZE
		1:200	A2
DRAWN BY	JA	CHECKED BY	NA
PROJECT	MOSELEY PARK SCHOOL REPLACEMENT SPORTS CENTRE	PROJECT NUMBER	DATE
		22-004	Apr23
DRAWING NUMBER	012	DRAWING NUMBER	REVISION
			B
DRAWING	PROPOSED ELEVATIONS	STATUS	PLANNING



Astley Partnership Ltd
 173 Lower High Street
 Stourbridge
 DY8 1TG
 info@astleypartnership.co.uk