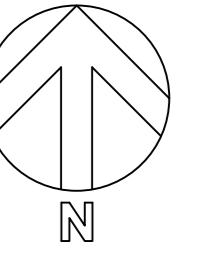


NOTES
1. This drawing is related to Ordnance Survey grid and level datum. There is a local scale factor of 1.0



Abbreviations (Where Applicable)

- AR Assumed Route
- BA Barrier
- BO Box Outlet
- BN Bin (Litter Bin)
- BO Bolted
- BSH Bus Shelter
- CB Cable TV Cover
- CB Control Box
- CCTV CCTV Camera
- CL Cover Level
- COL Column
- CPS Concrete Paving Slabs
- DC Drainage Channel
- DK Kerm (Deep Kerb)
- E Earthing Point
- ECP Electronic Cable Pit / Cover
- EYE Reading Eye
- FG Feeds Into Ground
- FL Floor Level
- FLT Floodlight
- G Gully
- GBN Grit Bin
- GI Gas Valve
- IC Inspection Cover
- I Invert Level
- LP Lamp Post
- MH Manhole
- MKR Marker
- NI No Further Information
- P Pole / Upright, Pylon or Post
- RP Road Gully
- RS Rainwater Pipe
- RS Road Sign
- SL Sump Level
- SV Stop Valve
- TIC Telecom Inspection Cover
- TP Telegraph Pole
- UFL Unable to Lift

SURVEY STATION COORDINATES

EASTINGS	NORTHINGS	LEVEL	STATION
29747.1	29742.2	135.26	1
29747.2	29742.3	135.26	2
29747.3	29742.4	135.25	3
29747.4	29742.5	135.25	4
29747.5	29742.6	135.25	5
29747.6	29742.7	135.25	6
29747.7	29742.8	135.25	7
29747.8	29742.9	135.25	8
29747.9	29743.0	135.25	9
29748.0	29743.1	135.25	10
29748.1	29743.2	135.25	11
29748.2	29743.3	135.25	12
29748.3	29743.4	135.25	13
29748.4	29743.5	135.25	14
29748.5	29743.6	135.25	15
29748.6	29743.7	135.25	16
29748.7	29743.8	135.25	17
29748.8	29743.9	135.25	18
29748.9	29744.0	135.25	19
29749.0	29744.1	135.25	20

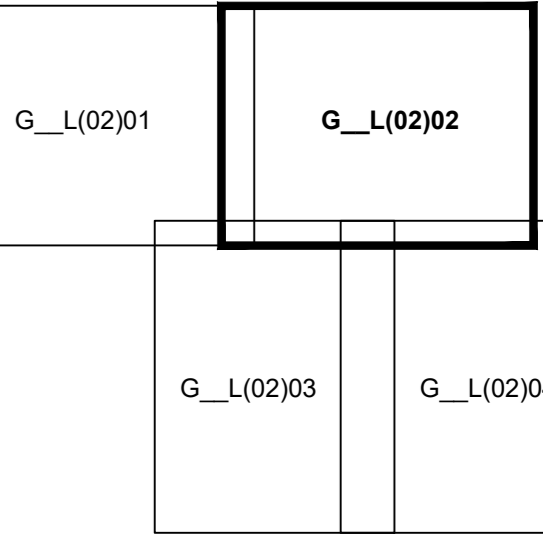
SERVICES LEGEND

- (AR) Assumed Route
- (BA) Barrier
- (BO) Box Outlet
- (BN) Bin (Litter Bin)
- (BO) Bolted
- (BSH) Bus Shelter
- (CB) Cable TV Cover
- (CB) Control Box
- (CCTV) CCTV Camera
- (CL) Cover Level
- (COL) Column
- (CPS) Concrete Paving Slabs
- (DC) Drainage Channel
- (DK) Kerm (Deep Kerb)
- (E) Earthing Point
- (ECP) Electronic Cable Pit / Cover
- (EYE) Reading Eye
- (FG) Feeds Into Ground
- (FL) Floor Level
- (FLT) Floodlight
- (G) Gully
- (GBN) Grit Bin
- (GI) Gas Valve
- (IC) Inspection Cover
- (I) Invert Level
- (LP) Lamp Post
- (MH) Manhole
- (MKR) Marker
- (NI) No Further Information
- (P) Pole / Upright, Pylon or Post
- (RP) Road Gully
- (RS) Rainwater Pipe
- (RS) Road Sign
- (SL) Sump Level
- (SV) Stop Valve
- (TIC) Telecom Inspection Cover
- (TP) Telegraph Pole
- (UFL) Unable to Lift

UNDERGROUND SERVICES

1. INFORMATION OBTAINED FROM RECORDS SHOULD BE TREATED WITH CAUTION AND FURTHER INVESTIGATION IS ADVISED.
2. IN THE ABSENCE OF EVIDENCE TO THE CONTRARY THE ROUTES OF COVERED CONNECTIONS BETWEEN MANHOLES ARE ASSUMED TO BE DIRECT.
3. UNDERGROUND SERVICES PLOTTED FROM EXISTING RECORDS ARE CLEARLY IDENTIFIED ON THE PLAN.
4. SERVICES HAVE BEEN TRACED WHERE POSSIBLE, AND IN SOME INSTANCES ASSUMED ROUTES HAVE BEEN ADDED USING PREVIOUS RECORDS. THERE MAY BE ADDITIONAL SERVICES NOT DISCOVERED DURING THIS SURVEY.
5. ALL DRAINAGE PIPES ARE 150mm dia UNLESS STATED.

SHEET LAYOUT



Amendments for changes around vehicle entrance, plus new car park

Rev	Description	Date	By	Checked By
1	Underground services added to survey	17/2/12	G. Weekes	17/2/12
2	Revised	17/2/12	G. Weekes	17/2/12

WOLVERHAMPTON BSF

MOSELEY PARK SCHOOL
TOPOGRAPHIC SURVEY AND
UNDERGROUND SERVICES

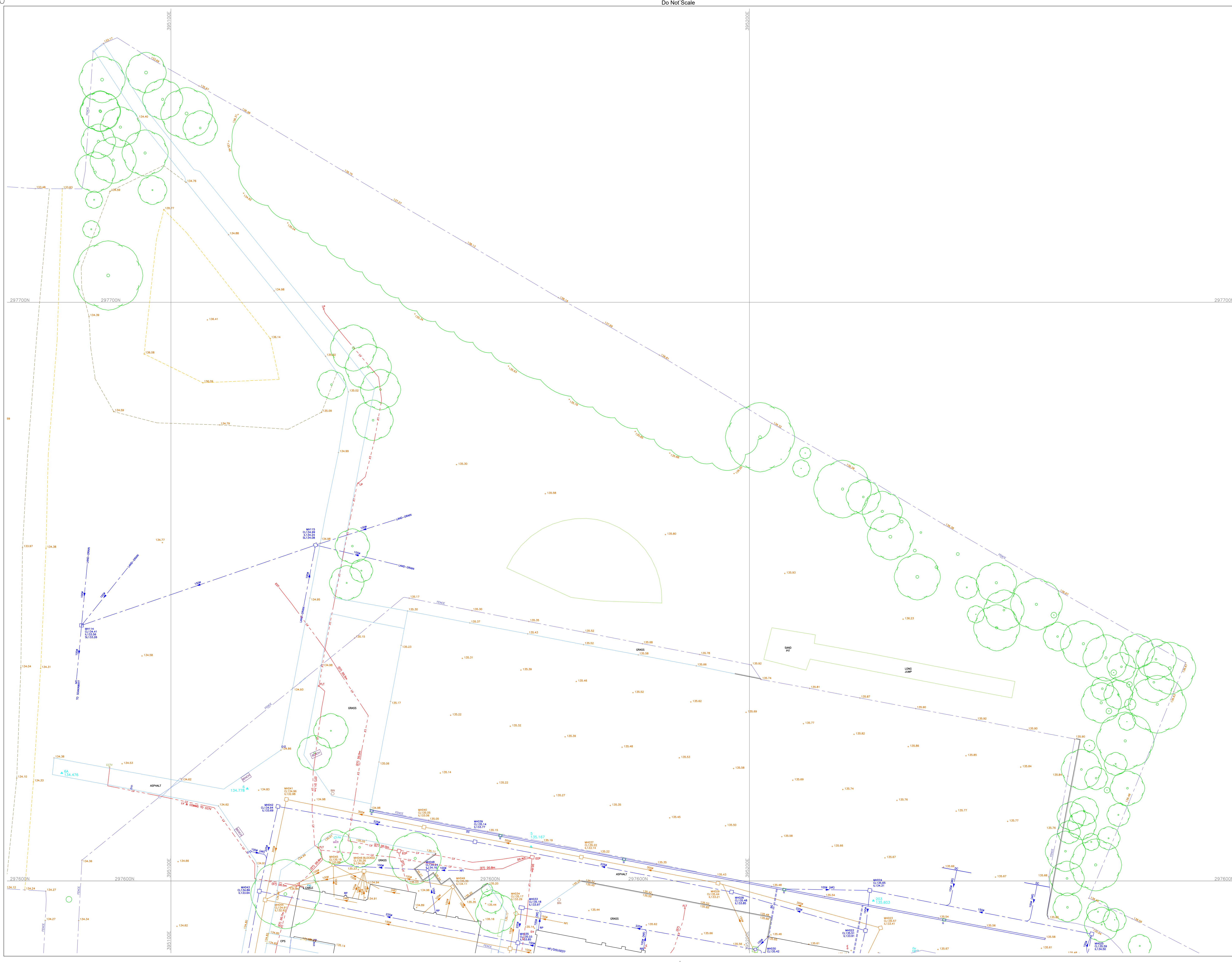
Originating Office: 24 Birch Street
Wolverhampton
WV1 4HY



TPS

Project No: 112049
Drawing No: G_L(02)02 B
Scale: 1:200

Author: J TARRANT
Checked: G WEEKES
Date: 30/11/11



G_L(02)02 B