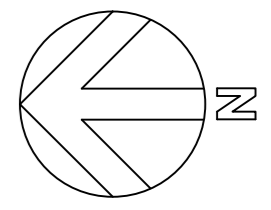


Copyright in all documents and drawings prepared by TPS Consult Ltd and in any works executed from those documents and drawings shall remain the property of TPS Consult Ltd. Unless otherwise agreed at project inception.

**NOTES**  
1. This drawing is related to Ordnance Survey grid and level datum. There is a local scale factor of 1.0



**Abbreviations (Where Applicable)**

- AR Assumed Route
- BA Barrier
- BO Box Outlet
- BN Bin (Litter Bin)
- BS Bus Shelter
- CB Control Box
- CATV Cable TV Cover
- CC Control Cover
- CCTV CCTV Camera
- CL Cover Level
- COL Column
- CPS Concrete Paving Slabs
- DC Drainage Channel
- DK Kerm (Drop Kerb)
- E Earthing Point
- ECP Electrical Cable Pit / Cover
- EYE Reading Eye
- FL Fire Hydrant
- FIG Feeds Into Ground
- FL Floor Level
- FLT Floodlight
- G Gully
- GBN Grit Bin
- GS Gas Valve
- IC Inspection Cover
- I Invert Level
- LP Lamp Post
- MH Manhole
- MKR Marker
- NFI No Further Information
- P Pole / Upright, Pillar or Post
- RC Road Curb
- RP Rainwater Pipe
- RS Road Sign
- SL Sump Level
- SV Stop Valve
- TIC Telecom Inspection Cover
- TP Telegraph Pole
- UFL Unable to Lift

EASTINGS	NORTHINGS	LEVEL	STATION
39527.471	29747.233	132.968	1
39527.886	29748.867	132.950	10
39528.287	29749.243	132.946	11
39528.824	29749.204	132.929	12
39529.287	29750.525	132.927	13
39529.459	29753.408	134.946	3
39529.538	29752.978	134.880	4
39529.621	29749.243	132.947	5
39529.621	29749.243	132.947	6
39529.621	29749.243	132.947	7
39529.621	29749.243	132.947	8
39529.621	29749.243	132.947	9

**SERVICES LEGEND**

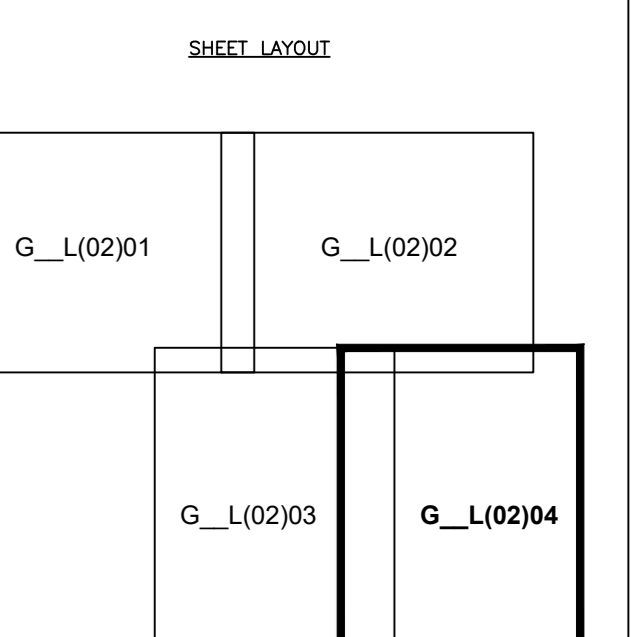
- (AR) Assumed Route
- (BA) Barrier
- (BO) Box Outlet
- (BN) Bin (Litter Bin)
- (BS) Bus Shelter
- (CB) Control Box
- (CATV) Cable TV Cover
- (CC) Control Cover
- (CCTV) CCTV Camera
- (CL) Cover Level
- (COL) Column
- (CPS) Concrete Paving Slabs
- (DC) Drainage Channel
- (DK) Kerm (Drop Kerb)
- (E) Earthing Point
- (ECP) Electrical Cable Pit / Cover
- (EYE) Reading Eye
- (FL) Fire Hydrant
- (FIG) Feeds Into Ground
- (FL) Floor Level
- (FLT) Floodlight
- (G) Gully
- (GBN) Grit Bin
- (GS) Gas Valve
- (IC) Inspection Cover
- (I) Invert Level
- (LP) Lamp Post
- (MH) Manhole
- (MKR) Marker
- (NFI) No Further Information
- (P) Pole / Upright, Pillar or Post
- (RC) Road Curb
- (RP) Rainwater Pipe
- (RS) Road Sign
- (SL) Sump Level
- (SV) Stop Valve
- (TIC) Telecom Inspection Cover
- (TP) Telegraph Pole
- (UFL) Unable to Lift

**SERVICES LEGEND**

- C COMMS CABLE
- CS CABLE TO CABLE
- E EARTHING CABLE
- DC DRAINAGE
- H DISTRICT HEATING
- EW ELECTRIC (HV)
- LV ELECTRIC (LV)
- T TELECOM CABLE
- TE OVERHEAD TELECOM CABLE
- U UNKNOWN (METALLIC)
- M METEOR MINE
- FO FODIL DRAINAGE
- SD STORM DRAINAGE

**UNDERGROUND SERVICES**

- INFORMATION OBTAINED FROM RECORDS SHOULD BE TREATED WITH CAUTION AND FURTHER INVESTIGATION IS ADVISED.
- IN THE ABSENCE OF EVIDENCE TO THE CONTRARY THE ROUTES OF CONDUIT CONNECTIONS BETWEEN MANHOLES ARE ASSUMED TO BE DIRECT.
- UNDERGROUND SERVICES PLOTTED FROM EXISTING RECORDS ARE CLEARLY IDENTIFIED ON THE PLAN.
- SERVICES HAVE BEEN TRACED WHERE POSSIBLE, AND IN SOME INSTANCES ASSUMED ROUTES HAVE BEEN ADDED USING PREVIOUS RECORDS. THERE MAY BE ADDITIONAL SERVICES NOT DISCOVERED DURING THIS SURVEY.
- ALL DRAINAGE PIPES ARE 150mm dia UNLESS STATED.



Amendments for changes around vehicle entrance, plus new car park

Rev	By	Date	Description
B	J Grant	13/9/12	Remodelling
A	J Grant	1/7/12	Remodelling

**WOLVERHAMPTON BSF**

Drawing Title  
**MOSELEY PARK SCHOOL  
TOPOGRAPHIC SURVEY AND  
UNDERGROUND SERVICES**

Originating Office  
24 Birch Street  
Wolverhampton  
WV1 4HY

**TPS**  
Birmingham Croydon Edinburgh Wolverhampton

TPS Consult Ltd Manager: **G. WEEKES**  
 QA System - Checks: Signature Date  
 Drawn By: **A. GRIFFIN** 30/11/11  
 Checked: **J. TARRANT** 30/11/11  
 Authorised: **G. WEEKES** 30/11/11

Project No: 112049 Drawing Status: INFORMATION Scale (at A0): 1:200  
 Drawing No: G\_L(02)04