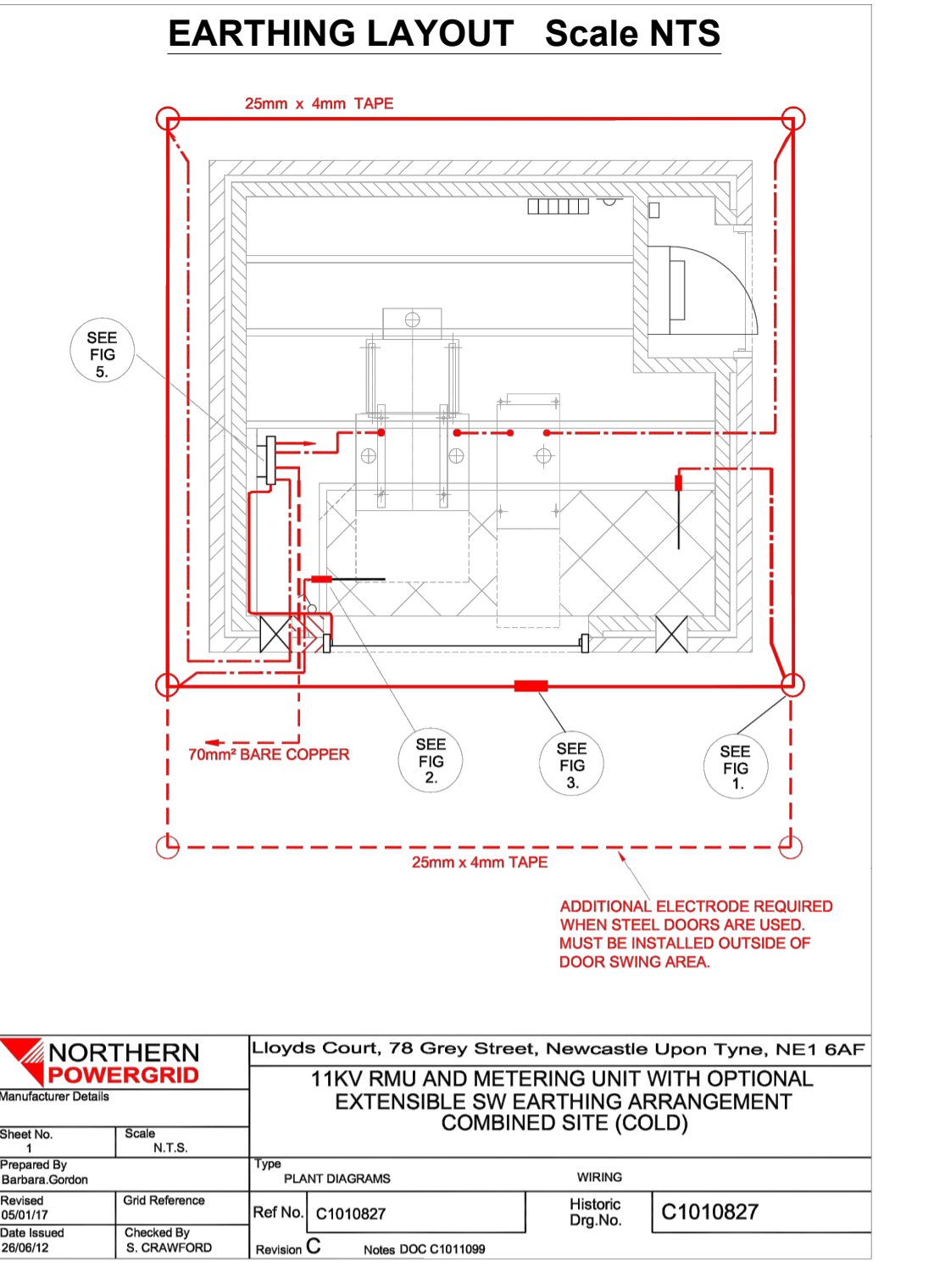
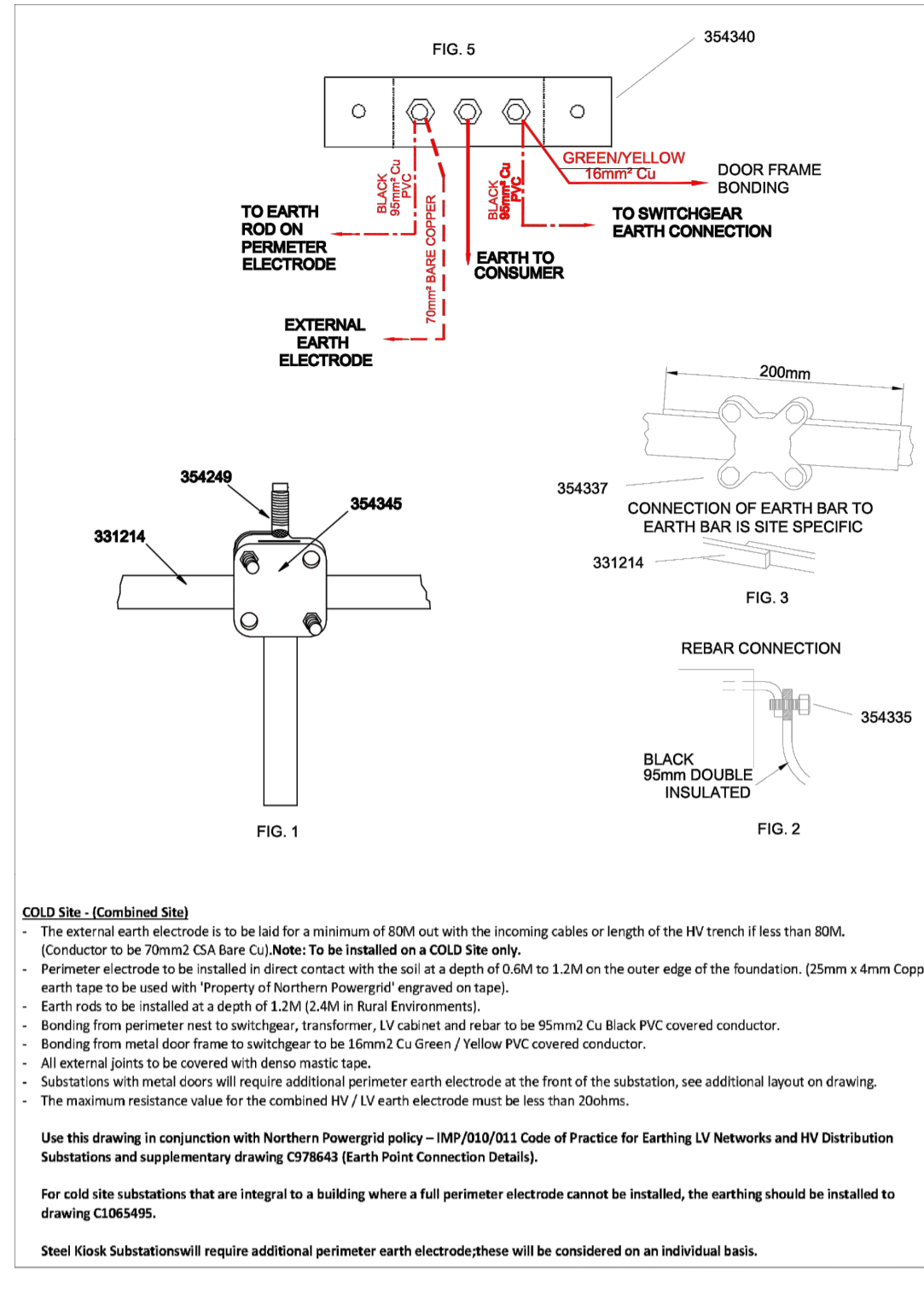


FINISH AND COLOUR			
FINISH	EXTERNAL	INTERNAL	DOOR(S)
SEMI GLOSS	GRIP WHITE	STIPPLED	SEMI GLOSS
REF. CODE	14 C 38	14 C 38	14 C 38

PARTS LIST			
ITEM	DESCRIPTION	SOURCE	QTY
A	FINISH WALL PANELS	LAW	4
B	ROOF PANEL	LAW	1
C	SEMI GLOSS DOOR	LAW	1
D	SEMI GLOSS DOOR	LAW	1
E	SEMI GLOSS DOOR	LAW	1
F	SEMI GLOSS DOOR	LAW	1
G	SEMI GLOSS DOOR	LAW	1
H	SEMI GLOSS DOOR	LAW	1
I	SEMI GLOSS DOOR	LAW	1
J	SEMI GLOSS DOOR	LAW	1
K	SEMI GLOSS DOOR	LAW	1
L	SEMI GLOSS DOOR	LAW	1
M	SEMI GLOSS DOOR	LAW	1
N	SEMI GLOSS DOOR	LAW	1
O	SEMI GLOSS DOOR	LAW	1
P	SEMI GLOSS DOOR	LAW	1
Q	SEMI GLOSS DOOR	LAW	1
R	SEMI GLOSS DOOR	LAW	1
S	SEMI GLOSS DOOR	LAW	1
T	SEMI GLOSS DOOR	LAW	1
U	SEMI GLOSS DOOR	LAW	1
V	SEMI GLOSS DOOR	LAW	1
W	SEMI GLOSS DOOR	LAW	1
X	SEMI GLOSS DOOR	LAW	1
Y	SEMI GLOSS DOOR	LAW	1
Z	SEMI GLOSS DOOR	LAW	1

MANUFACTURING INFORMATION			
WALLS:	GRP11MM PLY/70 X 50MM BATTENS @ 1000	CNT/GRP	
ROOF:	GRP11MM CORE/96 X 50MM BATTENS @ 600	CNT/GRP	
WALL PLATE:	-225 X 50 WALL PLATE		
BUILD TYPE:	READY BUILT		
BASE FLANGE:	125MM STANDARD FLANGE		
TOTAL WEIGHT:	1800 Kg		
TOTAL EQUIPMENT WEIGHT:	1800 Kg		
TOTAL EQUIPMENT WEIGHT FOR SHIPPING:	1800 Kg		
OTHER INFO:			



STANDARD NJUG ARRANGEMENT

DISCLAIMER: For details of all existing apparatus, please consult the Records Department of the local utility. Any existing apparatus shown on this drawing is for planning purposes only. The positions of which are to be taken as approximate only.

Notes:

THIS DRAWING TO BE USED FOR THE INSTALLATION OF ENVEVO ENGINEERING TR7 ENCLOSURES ONLY

1. THIS DRAWING IS CONFIDENTIAL AND MUST NOT BE DISCLOSED TO THIRD PARTIES, REPRODUCED OR USED, OR THE CONTENT THEREOF COPIED OR REPRODUCED WITHOUT THE WRITTEN CONSENT OF ENVEVO LTD.

2. THIS DRAWING IS TO BE READ IN CONJUNCTION WITH ALL RELEVANT ARCHITECT'S, SERVICE ENGINEER'S AND ENVEVO DRAWINGS AND SPECIFICATIONS.

CONCRETE: THE CONCRETE TO BE IN ACCORDANCE WITH THE SPECIFICATION AND ATTAIN THE RELEVANT CUBE CRUSHING STRENGTH AT 28 DAYS.

EARTHWORKS: FORTH TO BE SET ON UNDISTURBED ORGANIC STRATA THAT PROVIDE THE REQUIRED MINIMUM DESIGN SAFE GROUND BEARING CAPACITY.

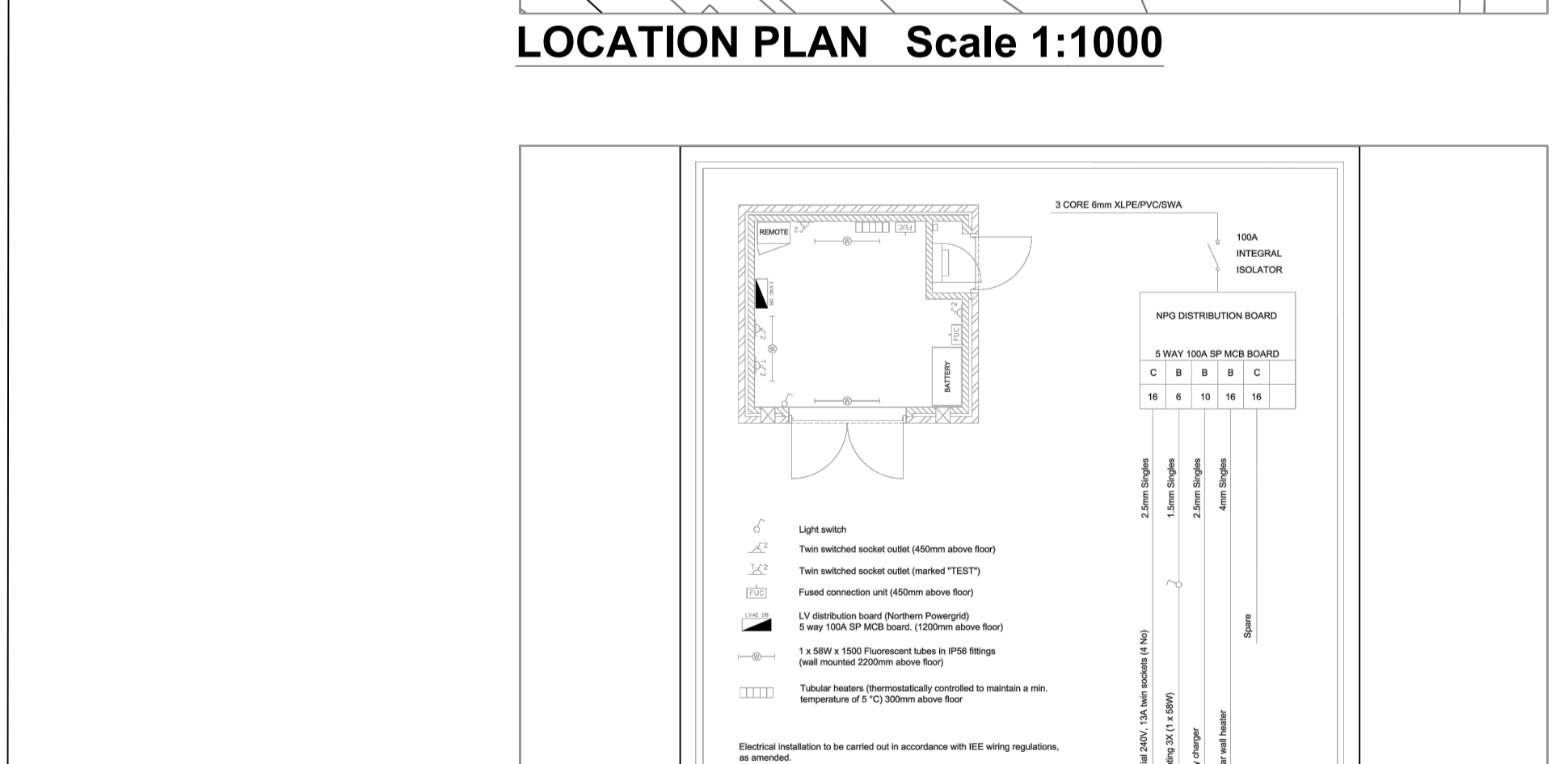
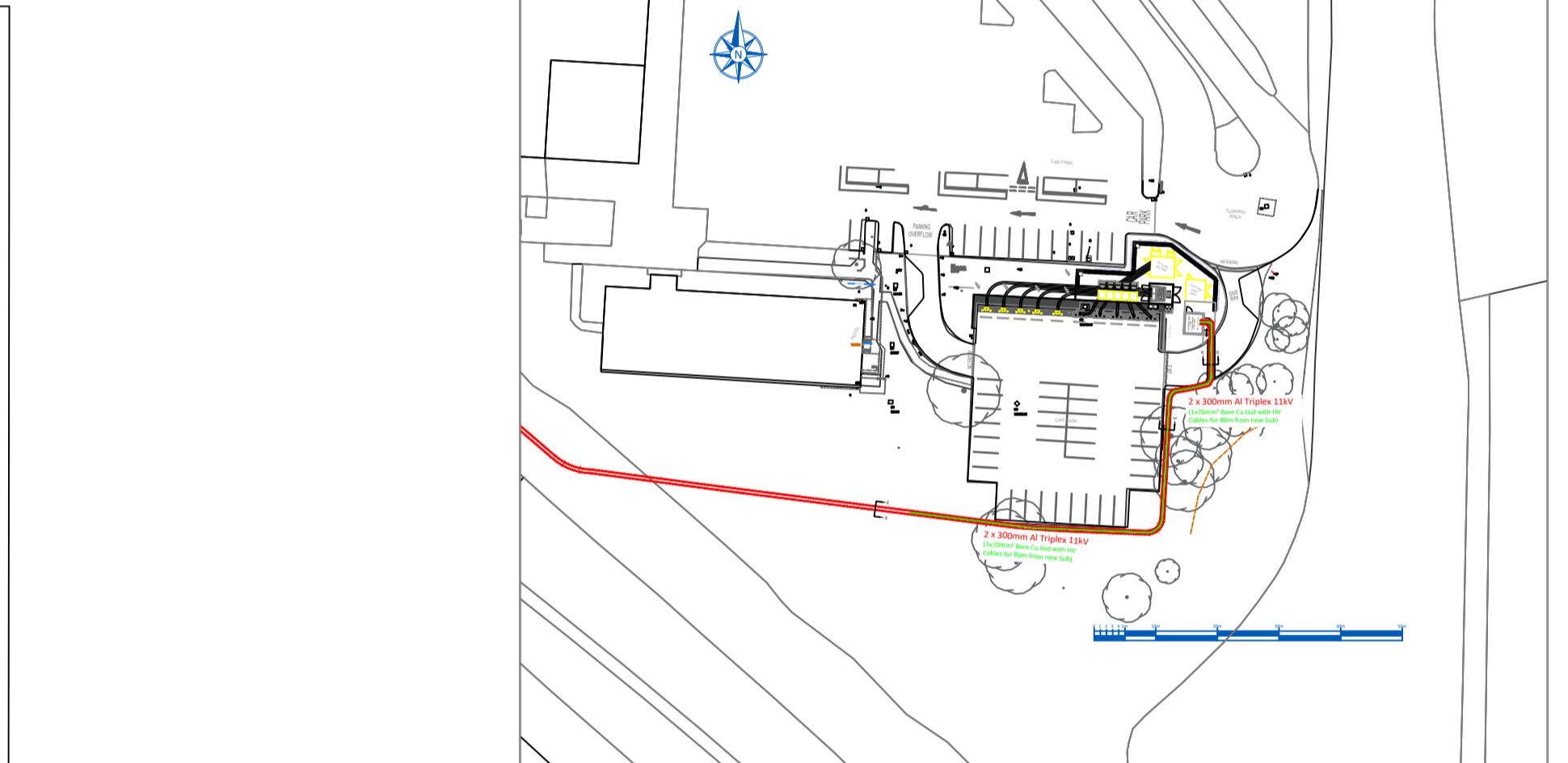
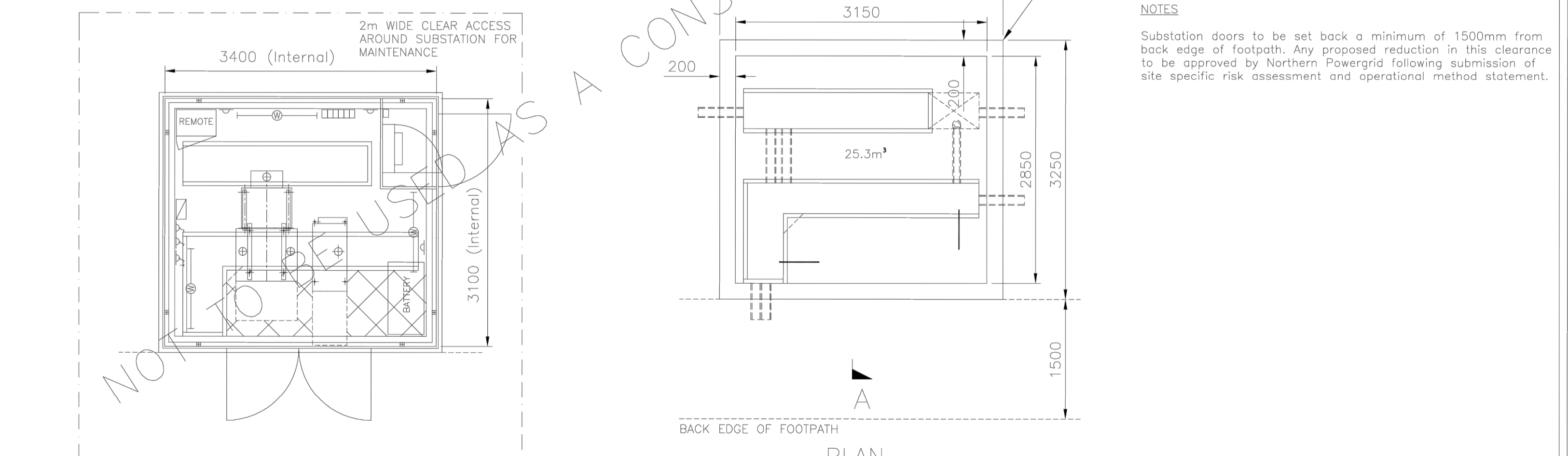
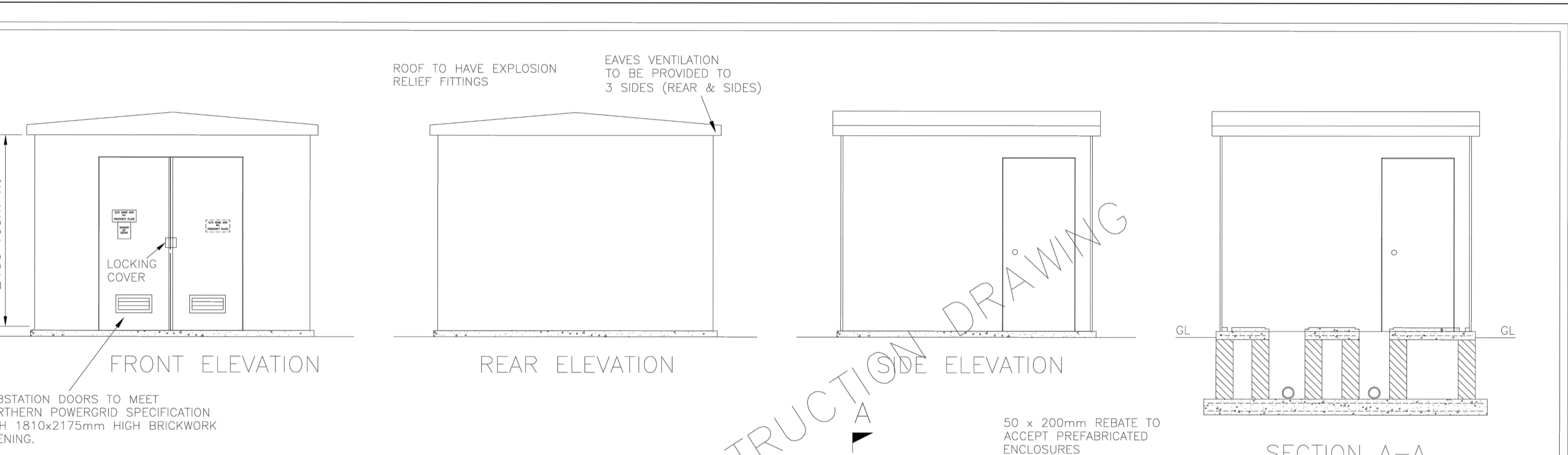
PLINTH (CONCRETE 4000mm² 28 DAY CUBE STRENGTH) A FLAT, LEVEL AND SMOOTH FLOOR SURFACE IS ESSENTIAL FOR INSTALLATION OF PLANT. TOLERANCE TO FINISHED LEVEL EXPRESSED AS A MAXIMUM PERMISSIBLE DEVIATION BENEATH A STRAIGHT EDGE WITH FEET PLACED ANYWHERE ON THE FLOOR SHALL NOT EXCEED 3mm IN 3M OR 5mm IN 6M.

CABLE SLOT ON COMPLETION OF CABLING, CABLE AREA TO BE FILLED WITH DRY SAND AND TOPPED WITH 150mm DEPTH OF 20mm ROUNDED GRAVEL CHIPPINGS

FOUNDATION & FLOOR LAYOUT DETAILS INDICATED ARE TYPICAL FOR UNIT SUBSTATIONS HOUSING OUTDOOR EQUIPMENT AND WOULD NOT THEREFORE BE APPLICABLE TO OTHER SUBSTATION TYPES.

NB: All detailed drawings dimensions in mm.

DNO REF: ENQ5430321
IDNO REF: ----



NORTHERN POWERGRID			
Lloyds Court, 78 Grey Street, Newcastle Upon Tyne, NE1 6AF			
11kV RMU WITH OPTIONAL EXTENSIBLE SWITCH IN PREFABRICATED ENCLOSURE			
Manufacturer Details	Document Details		
Sheet No. 1	Scale AS SHOWN	Document No. GENERAL ARRANGEMENT / PLAN & ELEVATIONS	Historic Drawing No.
Prepared By TM	Grid Reference	Ref No. C993908	
Revised	Checked By JJ	Revision B	Notes
Date Issued 17.05.16			

IN PARTNERSHIP WITH

GRIDSERVE sustainable energy

2 GRP design altered. Small Light & Power included AM 09/02/22

1 Initial proposal BMD

REV DESCRIPTION BY DATE

STATUS: **Approved**

envevo

Unit A Fullerton Court, 3 Drumhead Place
Cambuslang, Glasgow, G12 8BY
Tel: 0141 428 4440
www.envevo.co.uk

CLIENT: **GRIDSERVE**
Thorney Weir House, Thorney Mill Lane
Iver, Buckinghamshire
SL09 9AQ

PROJECT: **MOTO Blyth**
Junction Of A1(M) And A614
Hill Top Roundabout
Blyth, S81 8HG

DRAWING TITLE: **Substation Plinth Detail**

SCALE AT ALL: N.T.S. DATE: 15/01/22 DRAWN: BMD CHECKED: BMD

PROJECT NO: ENV2270 REVISED BY: ENV2270-SP REVISION: 2