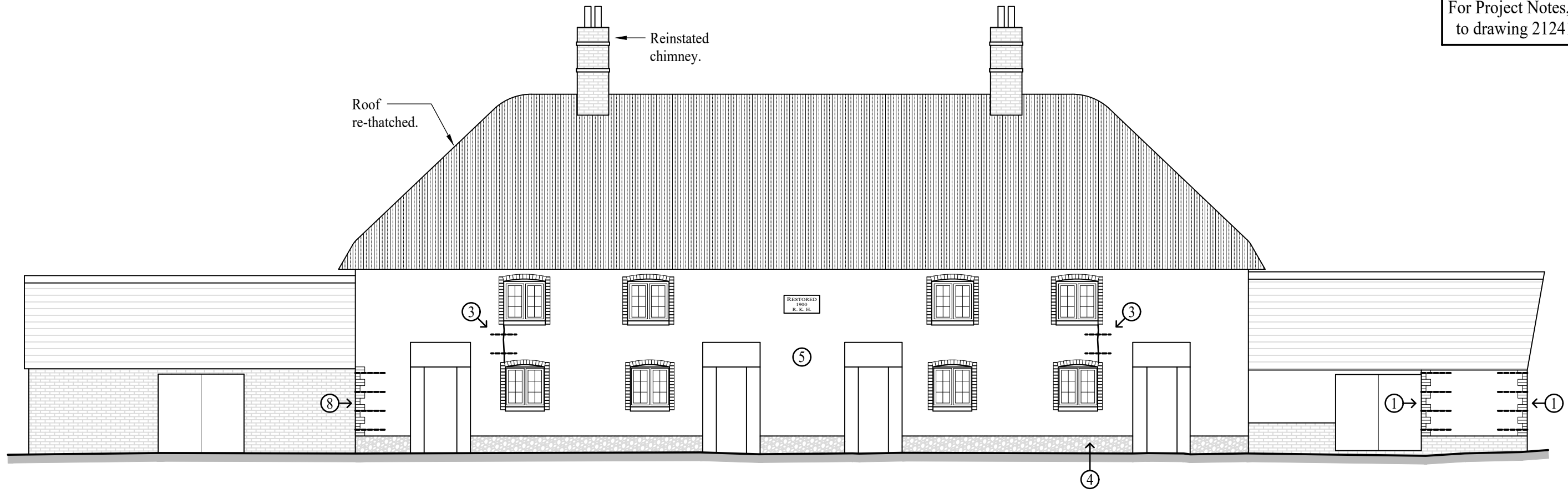


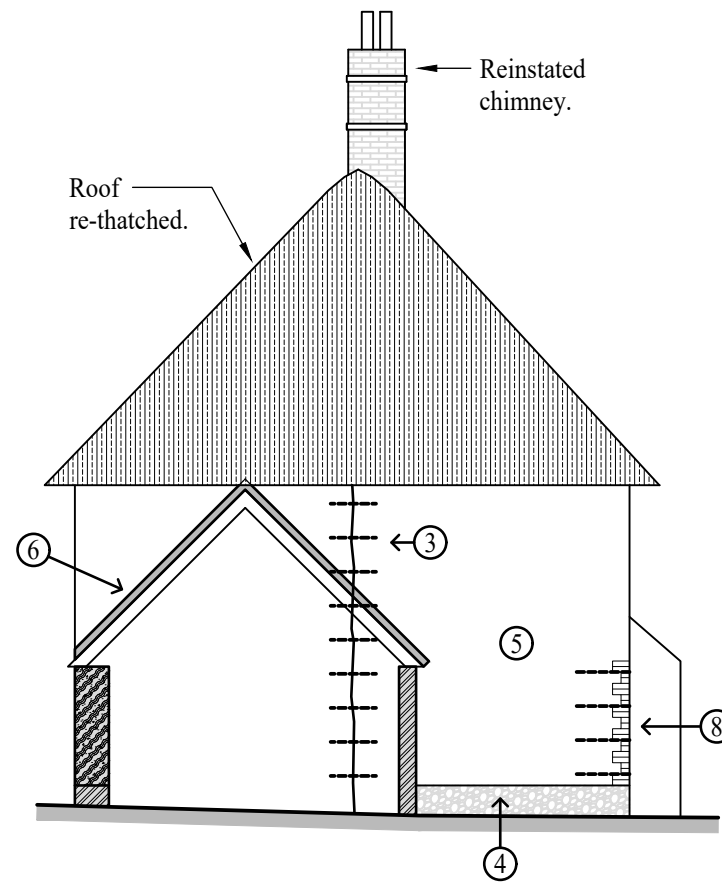
For Project Notes, refer to drawing 21241/01.



South Elevation (front)

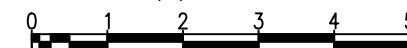
KEY


1. Cut out loose, missing, eroded and moisture damaged cob and remove past infill and replace by dubbing out with render up to 75mm depth and with cob blocks for deeper recesses - refer to detail on drawing 21241/08.
2. Where present, any voids, rat runs, holes etc. in walls are to be filled - refer to detail on drawing 21241/08.
3. Cracks in cob or at junction between cob and stonework to be raked out and cleared of all loose material. They are to be refilled with lime mortar supplemented with broken brick or sharp stones where they are greater than 25mm in width and stitched using 'Helibar' - refer to detail on drawing 21241/08.
4. Existing stonework and brickwork wall base to have black paint/bitumin removed and to have the mortar joints raked out and repointed using a lime putty based mortar. See specification on drawing 21241/01.
5. Surface of cob or stonework walls to be re-rendered throughout. See specification on drawing 21241/01 for lime plaster, renders and mortars.
6. New flashing installed - refer to detail on drawing 21241/11.
7. Area of loose or missing masonry to be relaid.
8. Existing brick jambs of openings and corners to be reformed where damaged and tied to cob using 8mm stainless steel Helibar driven into cob and set into the mortar joints at 300mm c/c - refer to detail on drawing 21241/09.
9. Reinstatate top of cob walls to verge using in-situ cob.



West Elevation (side facing access lane)

1:100 SCALE (m)



Rev	Description	Dwn	Chk'd	Date
Drawing Status				
CONSTRUCTION				
Project				
THE BARRACKS. BARTON STACEY, HAMPSHIRE, SO21 3QJ. for Test Valley Dev. Co.				
Drawing Title				
BUILDING ELEVATIONS SOUTH & WEST				
 BARRY HONEYSETT Consulting Structural & Civil Engineers Bathurst House, Smythen Street, Exeter, Devon, EX1 1BN Telephone: 01392 272 510 Website: www.barryhoneysett.co.uk				
The contents of this drawing are copyright. © Barry Honeysett				
Checked	Drawn	Date	Scale @ A3	
BH	JB	26/07/2022	1:100	
Project Number	Drawing Number	Revision		
21241	06	-		