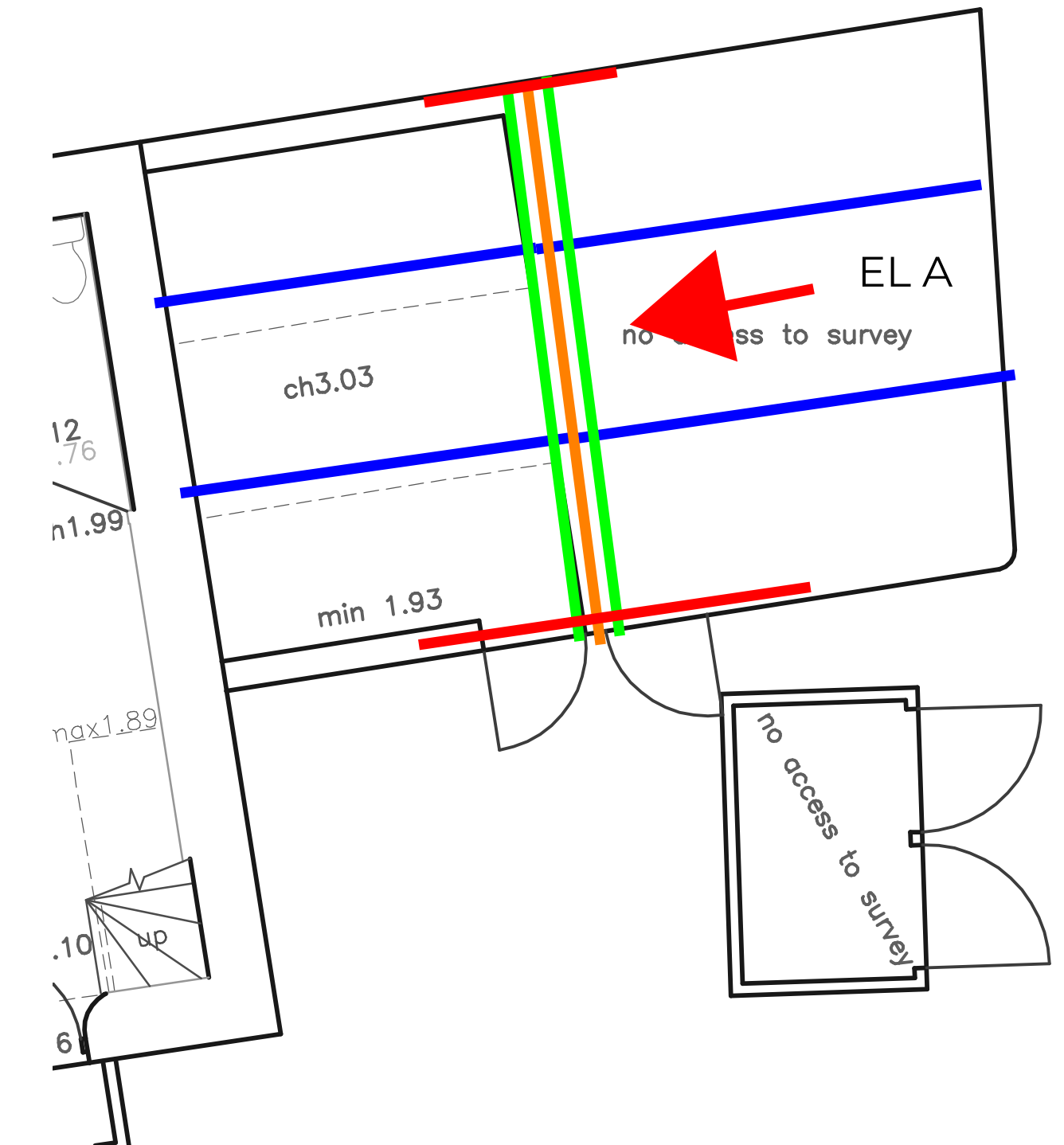
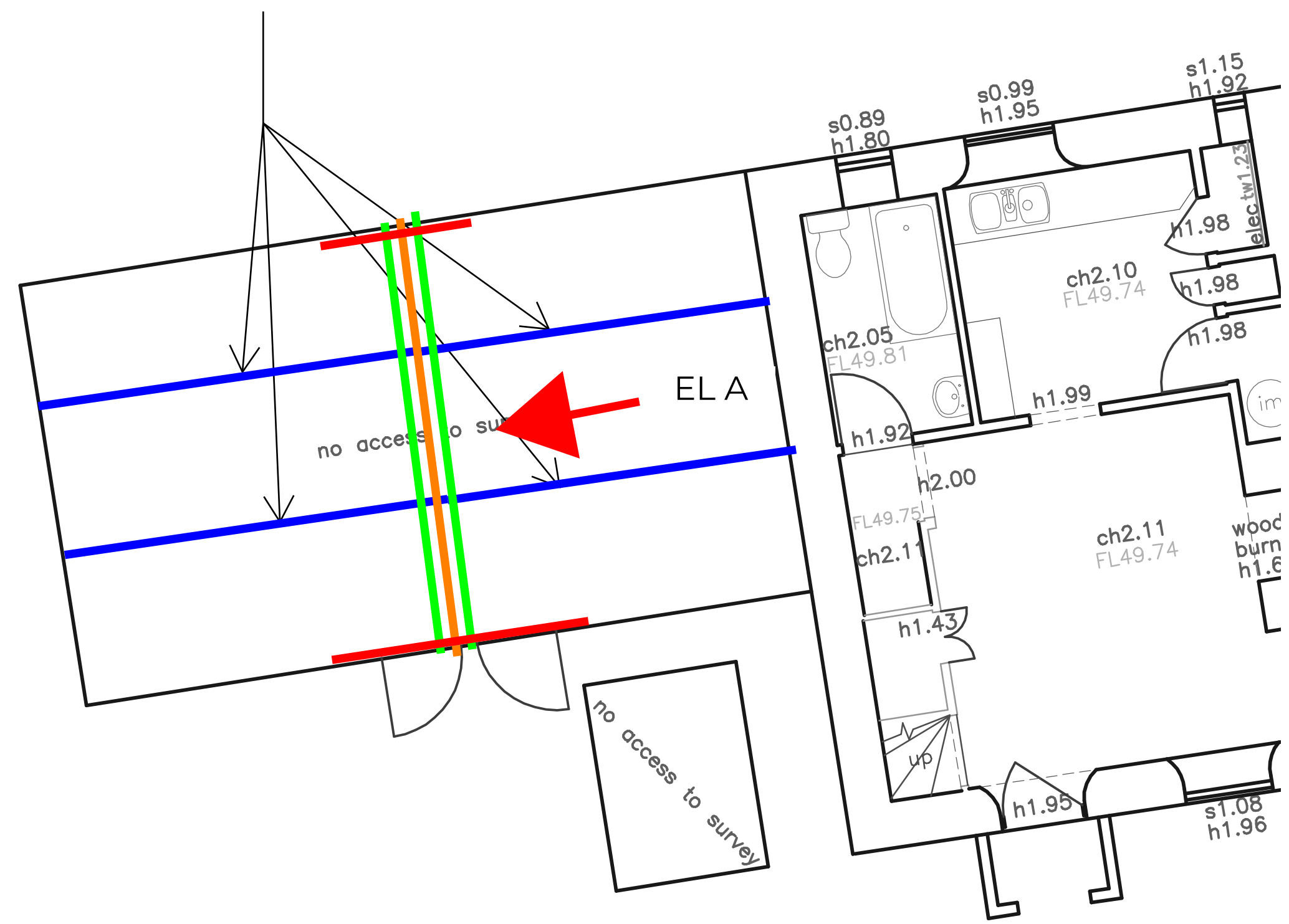
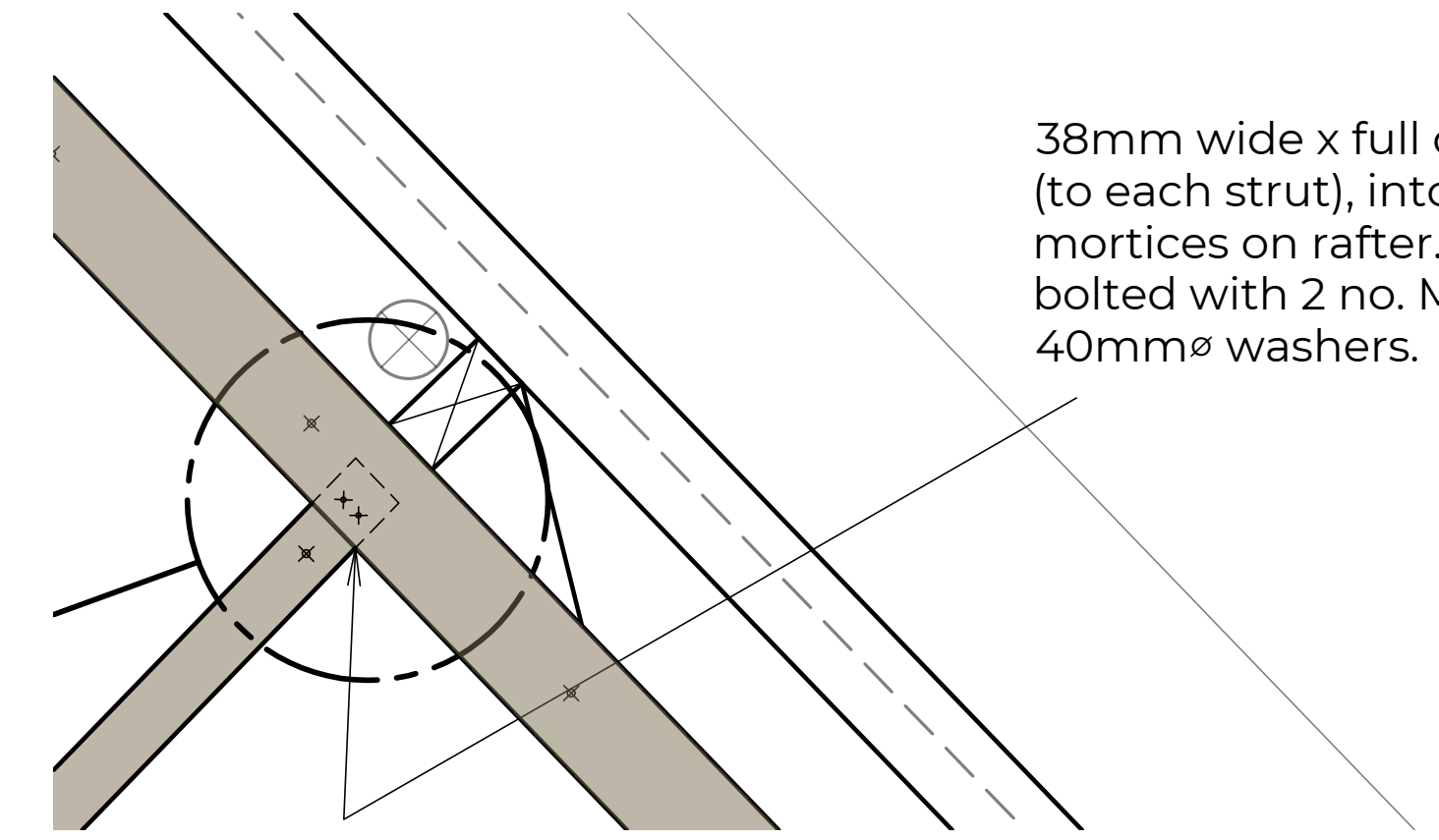


NEW PURLINS FIXED TO EXISTING FORMED FROM 2 No 100 x 175 C24 TIMBER

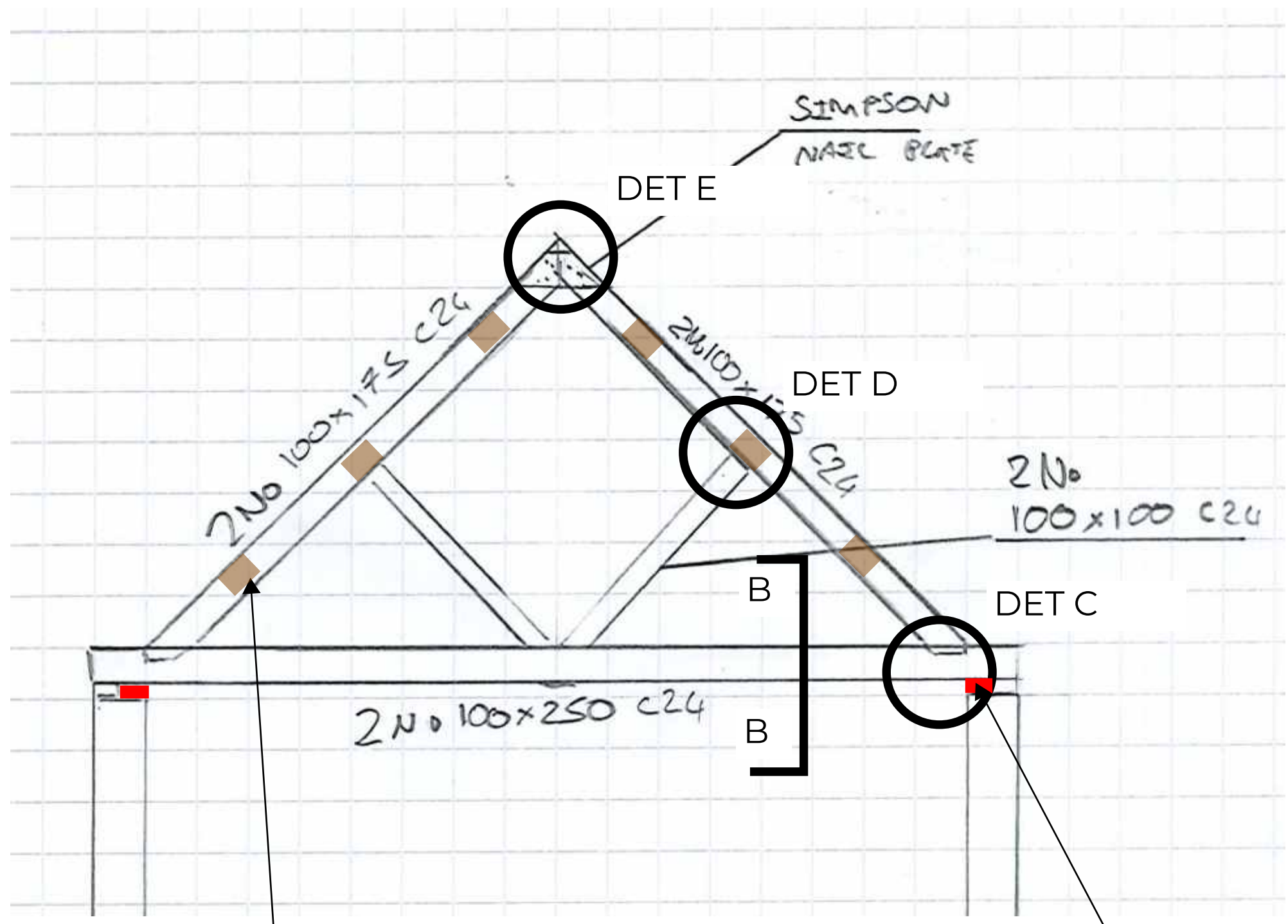


- NEW TIMBER TRUSS
- EXISTING TIMBER TRUSS
- NEW LINTEL



38mm wide x full depth tenon (to each strut), into 38mm wide mortices on rafter. Through bolted with 2 no. M8 bolts c/w 40mmØ washers.

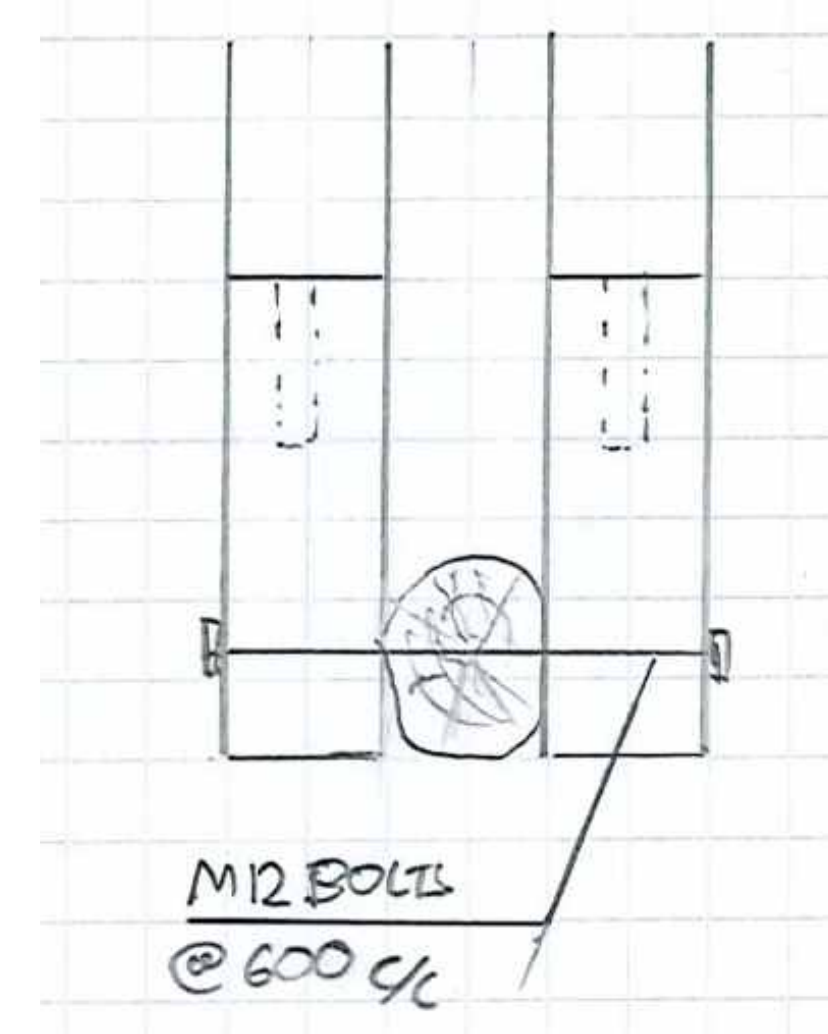
DETAIL D



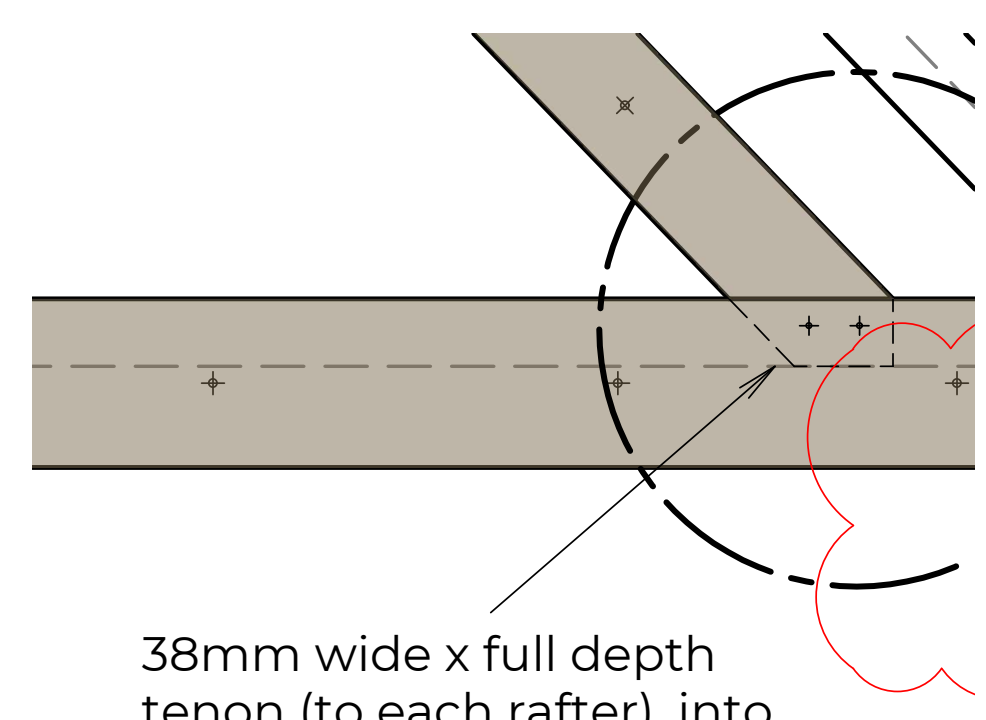
ELEVATION A

NEW FRAMES FIXED TOGETHER WITH M12 BOLTS THROUGH BLOCKING PEICE

NEW LINTEL TBC

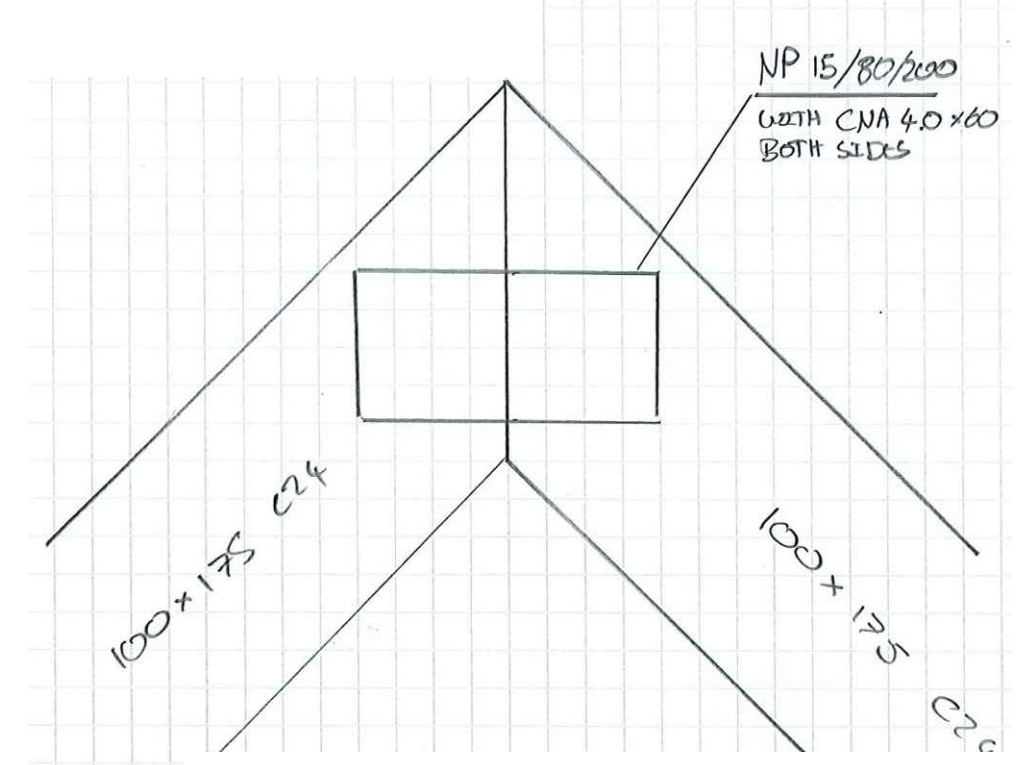


SECTION B - B



38mm wide x full depth tenon (to each rafter), into 38mm wide mortices on btm chord. Through bolted with 2 no. M8 bolts c/w 40mmØ washers.

DETAIL C



DETAIL E

REV	DATE	REVISIONS	REV BY	CHK BY
<small>The drawing is the copyright of Andrew Waring Associates. It may not be copied, altered or reproduced in any way without their written authority. Dimensions must be checked on site and not scaled from this drawing.</small>				
<small>© COPYRIGHT</small>				
		CONSULTING STRUCTURAL AND CIVIL ENGINEERS		01794 524447 mail@awaengineers.com www.awaengineers.com
ARCHITECT BCM				
CLIENT MIDDLETON ESTATE				
JOB TITLE THE BARRACKS BARTON STACEY				
DRG TITLE OUTBUILDING				
STATUS FOR COMMENT				
DRG NO	11442_SK002	DATE	23/06/2023	REV 01
SCALE	NTS	DRAWN BY	JG	CHECKED BY