

PROPOSED ROOF PLAN
1:100

HARLOW COUNCIL HMO AMENITY STANDARDS.

SPACE STANDARDS FOR SLEEPING ACCOMMODATION.

- 6.51m² FOR A SINGLE ROOM.
- 10.22m² FOR A DOUBLE ROOM.

SHARED KITCHEN FACILITIES.

- 6-10 PERSONS UP TO 18m² OR 2 KITCHENS.

KEY

— EXISTING WALLS TO BE DEMOLISHED

BEDROOM 1 - 10.24m²

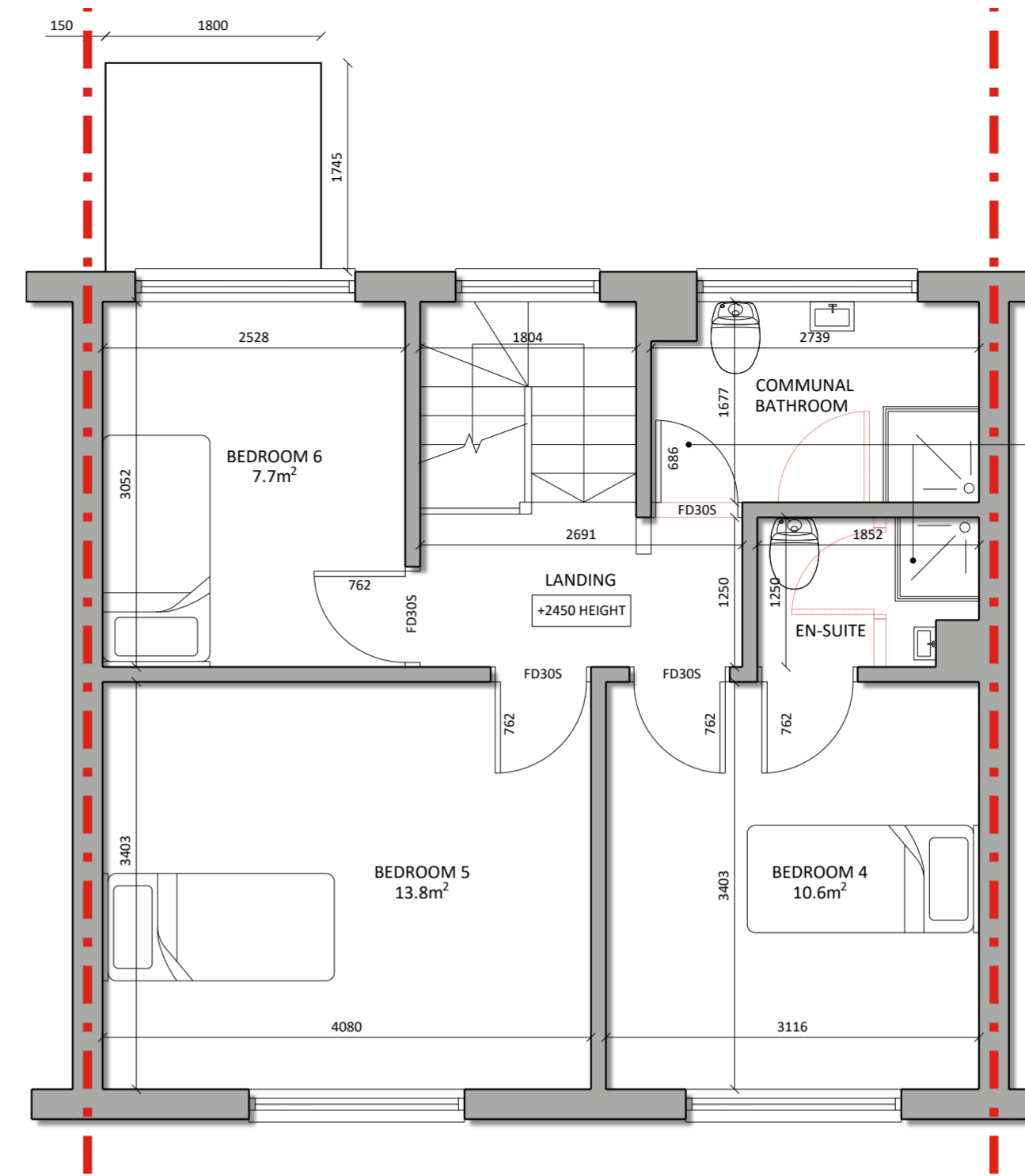
BEDROOM 2 - 15.67m²

BEDROOM 3 - 15.57m²

BEDROOM 4 - 10.6m²

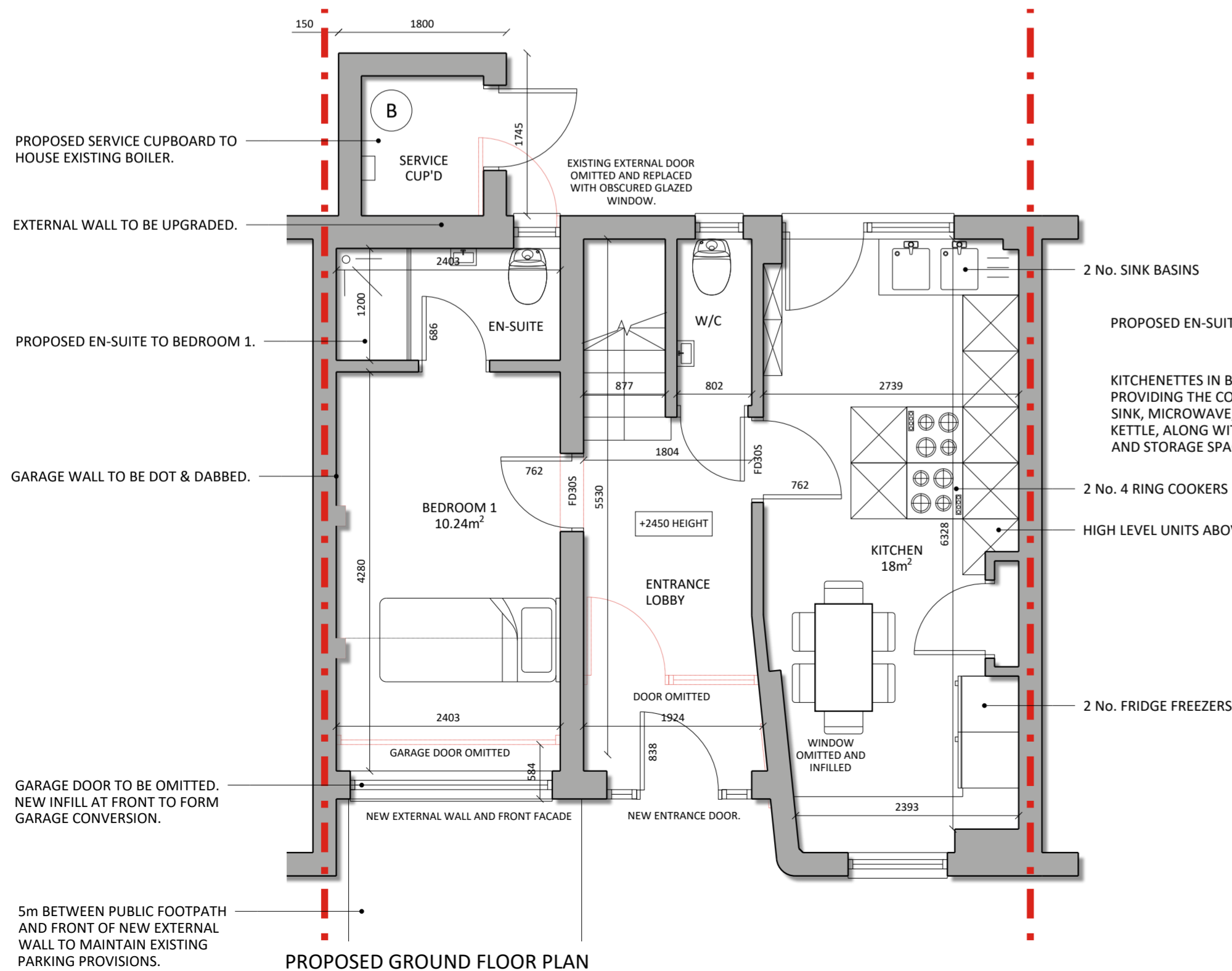
BEDROOM 5 - 13.8m²

BEDROOM 6 - 7.7m²

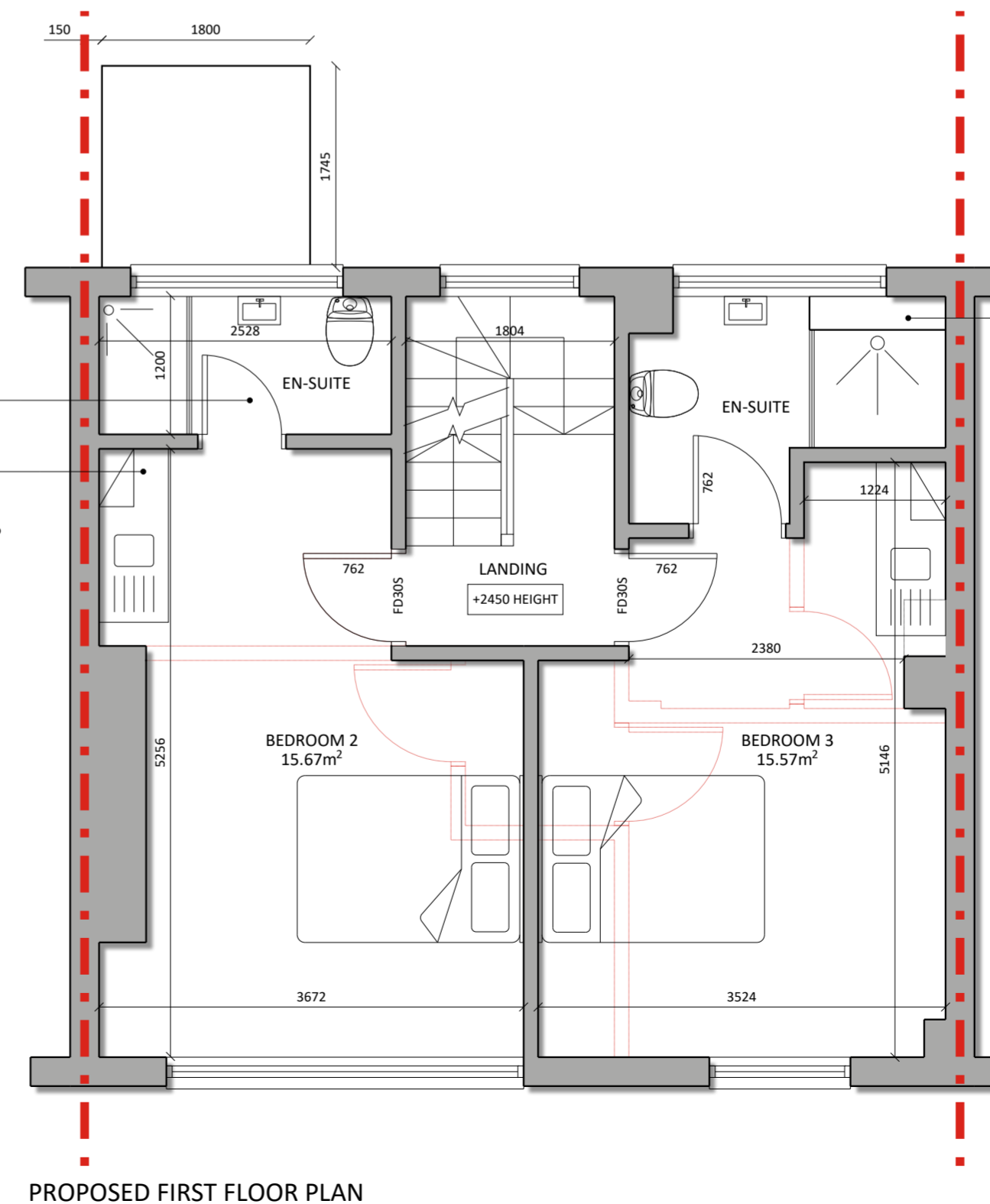


NEW ACCESS INTO EXISTING COMMUNAL BATHROOM ENABLING EXISTING CUPBOARD SPACE TO BECOME AN EN-SUITE FOR BEDROOM 4.

PROPOSED SECOND FLOOR PLAN



PROPOSED GROUND FLOOR PLAN



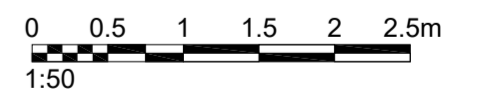
PROPOSED FIRST FLOOR PLAN

EXISTING COMMUNAL BATHROOM TO BECOME AN EN-SUITE TO BEDROOM 3.

FOR PLANNING

Location
335 THE HIDES
HARLOW

Title
PROPOSED PLANS



Scale	Drawn	Checked	Date
SEP 23	GD	GD	1:50 @A2
Drawing Number			Revision
1440_G2_P004			P1

