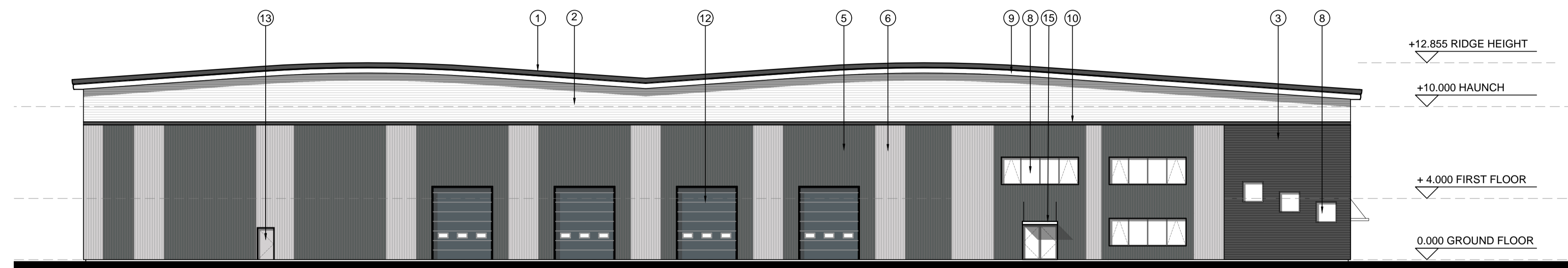
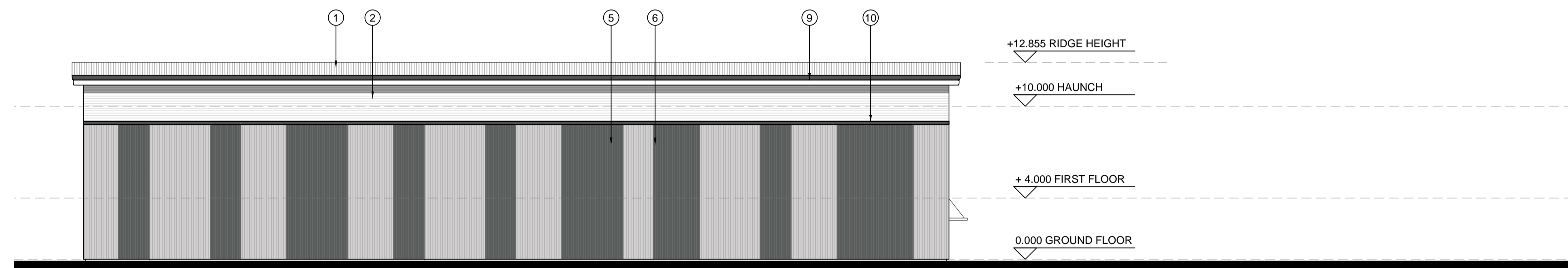


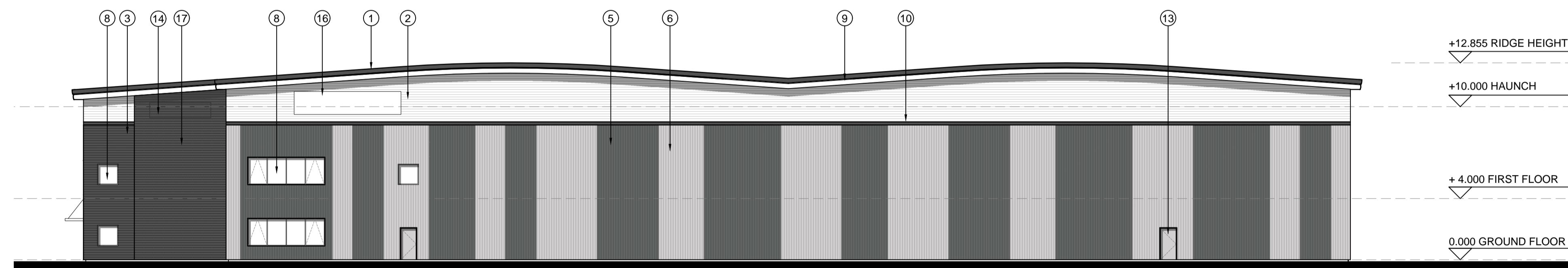
01 NORTH-WEST ELEVATION  
14 1:200



02 NORTH-EAST ELEVATION  
14 1:200

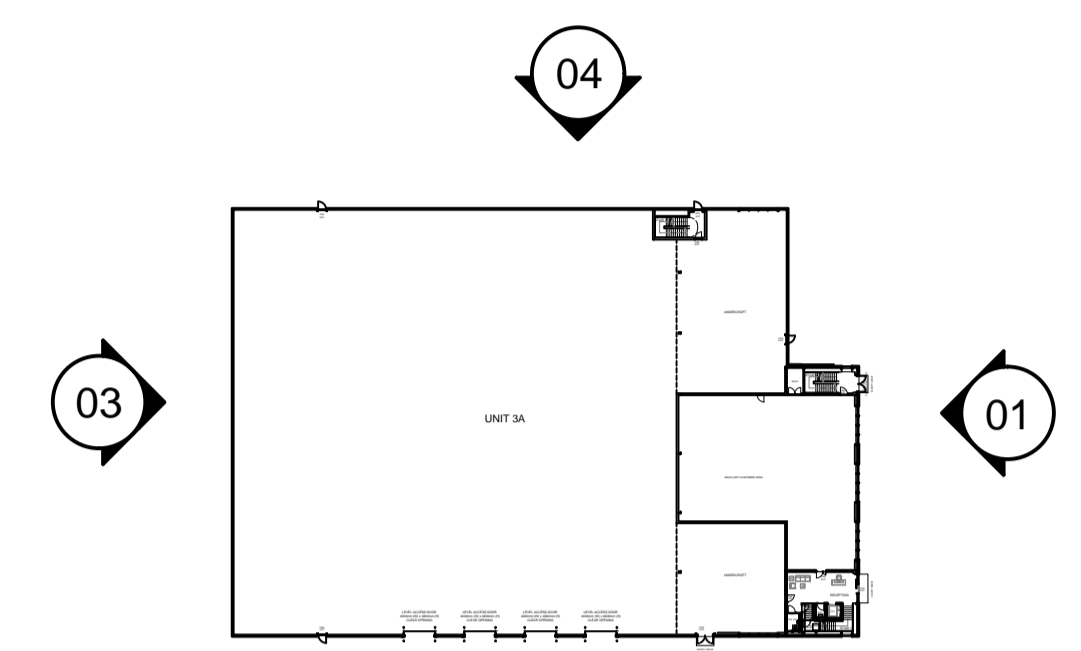
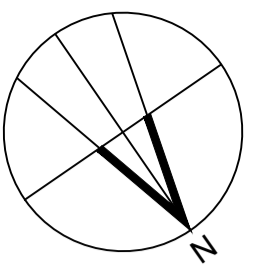


03 SOUTH-EAST ELEVATION  
14 1:200



04 SOUTH-WEST ELEVATION  
14 1:200

NOTES:  
SUBJECT TO STATUTORY CONSENTS  
SUBJECT TO SURVEY  
BASED ON OS MAP REPRODUCED BY PERMISSION OF CONTROLLER OF HER MAJESTY'S STATIONARY OFFICE (G) CROWN COPYRIGHT  
COPYRIGHT RESERVED  
DO NOT USE ELECTRONIC VERSIONS OF THIS DRAWING TO DETERMINE DIMENSIONS UNLESS SPECIFICALLY AUTHORISED BY MICHAEL SPARKS ASSOCIATES  
IF USING AN ELECTRONIC VERSION OF THIS DRAWING FIGURED DIMENSIONS TAKE PRECEDENCE AND NOTIFY MICHAEL SPARKS ASSOCIATES OF ANY DISCREPANCIES



05 KEY PLAN  
14 NTS

REV	DATE	NOTE	DRAW	CHK
C	25/09/2023	Updated floor plan	GZ	AC
B	22/09/2023	Updated as client comments	GZ	AC
A	21/09/2023	Updated as client comments	GZ	AC
-	19/09/2023	First issue	GZ	AC



CHARTERED ARCHITECTS  
11 PLATO PLACE  
ST JAMES ROAD  
LONDON SW6 4TU  
TELEPHONE 020 7736 6162  
FAX 020 7736 3896  
www.mso-architects.co.uk



SCHEDULE OF EXTERNAL FACING MATERIALS		SCHEDULE OF EXTERNAL FACING MATERIALS		SCHEDULE OF EXTERNAL FACING MATERIALS		SCHEDULE OF EXTERNAL FACING MATERIALS											
1	ROOF	CA GROUP 'TWIN THERM CHRONUS ROOF SYSTEM' FINISH: TATA STEEL COLORCOAT HPS 200 ULTRA COLOUR: LIGHT GREY GOOSEWING GREY (RAL 7038)	5	WALL CLADDING 4	VERTICALLY LAID CA 32 1000W TRAPEZOIDAL PROFILED BUILT UP WALL CLADDING FINISH: TATA STEEL COLORCOAT PRISMA COLOUR: MID GREY SLATE GREY (RAL 7012)	8	WINDOW / DOOR	THERMALLY BROKEN POLYESTER POWDER COATED ALUMINIUM WINDOW / DOOR SYSTEM COMPLETED WITH SPANDREL PANEL COLOR TO MATCH FRAME GLAZING: GREY TINTED FRAME COLOUR: ANTHRACITE GREY (RAL 7016)	12	LEVEL ACCESS DOORS	FINISH: POLYESTER POWDER COATED COLOUR: MID GREY SLATE GREY (RAL 7012)	13	PERSONNEL DOORS	DOOR / FRAME TO MATCH ADJACENT CLADDING	14	LOUVRE	COLOUR: TO MATCH ADJACENT CLADDING
2	WALL CLADDING 1	HORIZONTALLY LAID CA 32 1000W TRAPEZOIDAL PROFILED BUILT UP WALL CLADDING FINISH: TATA STEEL COLORCOAT HPS 200 ULTRA COLOUR: WHITE (RAL 9003)	6	WALL CLADDING 5	VERTICALLY LAID CA 32 1000W TRAPEZOIDAL PROFILED BUILT UP WALL CLADDING FINISH: TATA STEEL COLORCOAT PRISMA COLOUR: SILVER METALLIC SIRIUS (RAL 9006)	9	EAVES / VERGE	TWO PIECE EAVES AND VERGE FLASHING FINISH: TATA COLORCOAT PRISMA COLOUR: DARK GREY ANTHRACITE GREY (RAL 7016) TOP PIECE, WHITE (RAL 9003) BOTTOM PIECE	15	CANOPY	GLASS CANOPY	16	SIGNAGE	SIGNAGE ZONE	17	SOLAR WALL	SOLAR WALL SYSTEM COLOUR: DARK GREY ANTHRACITE GREY (RAL 7016)
3	WALL CLADDING 2 OFFICE	HORIZONTALLY LAID CA 300 MR FINISH: TATA STEEL COLORCOAT HPS 200 ULTRA COLOUR: DARK GREY ANTHRACITE GREY (RAL 7016)	7	CURTAIN WALL / ENTRANCE DOOR	THERMALLY BROKEN POLYESTER POWDER COATED ALUMINIUM CURTAIN WALLING SYSTEM - MULLION DRAINED SYSTEM COMPLETED WITH GLASS CANOPY ABOVE ENTRANCE DOOR GLAZING: GREY TINTED FRAME COLOUR: DARK GREY ANTHRACITE GREY (RAL 7016)	10	FEATURE FEATURE FLASHING	FINISH: TATA COLORCOAT PRISMA COLOUR: DARK GREY ANTHRACITE GREY (RAL 7016)									
4	WALL CLADDING 3 OFFICE	HORIZONTALLY LAID CA 300 MR FINISH: TATA STEEL COLORCOAT HPS 200 ULTRA COLOUR: WHITE (RAL 9003)				11	OFFICE FEATURE FLASHING	FINISH: TATA COLORCOAT PRISMA COLOUR: BLUE									

TITLE  
EAST HORNDON BUSINESS PARK  
DRAWING  
ELEVATIONS  
UNIT 3A  
CLIENT  
GOODMAN

DATE	SCALE	DRAWN
SEPTEMBER 2023	1:200 @ A1	GZ

STATUS	CHECKED
TENDER	AC

DRAWING NUMBER  
31795-FE-14C