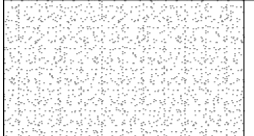
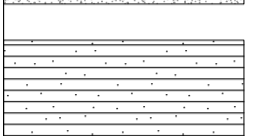
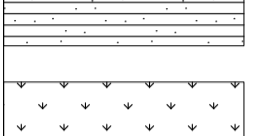
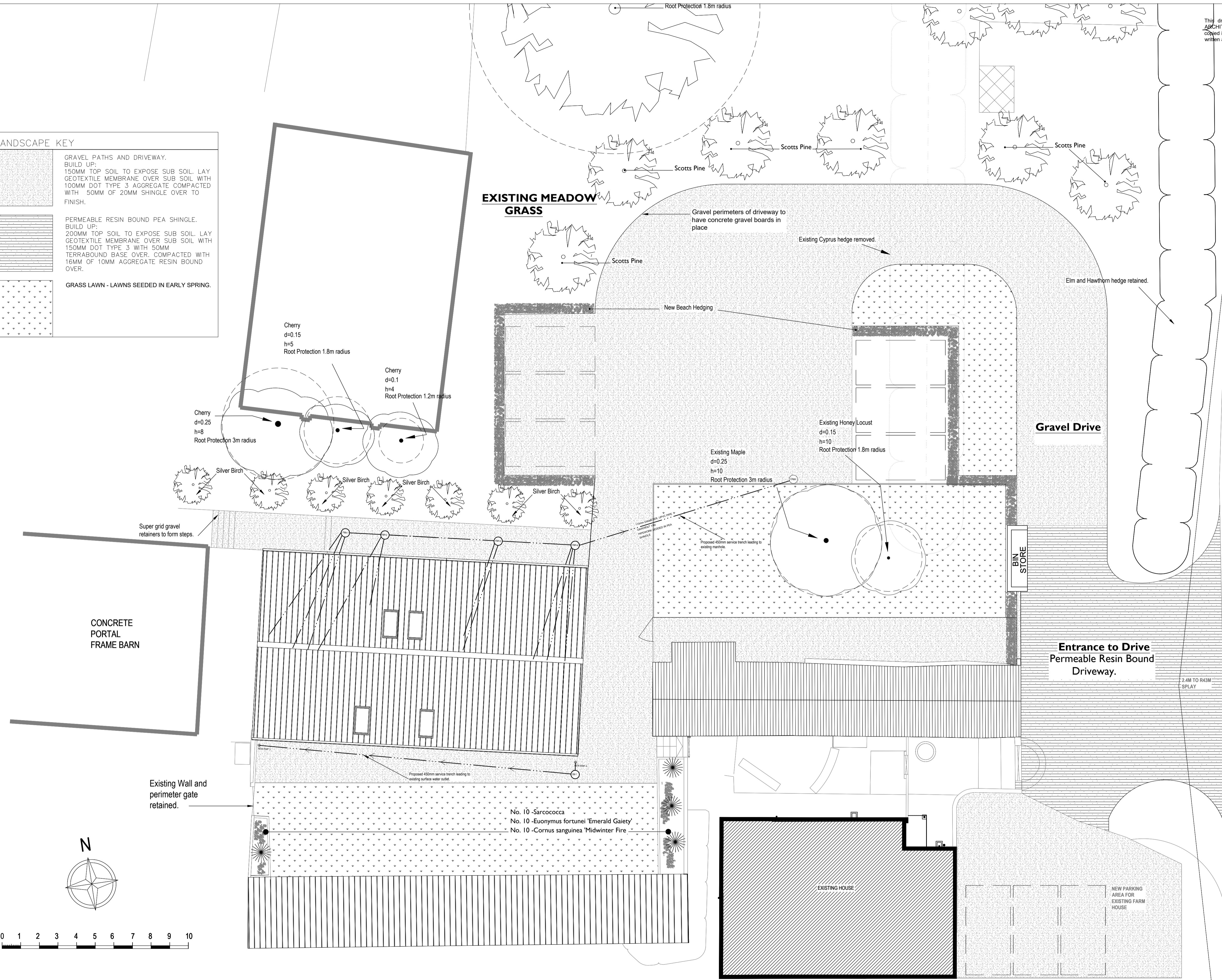


LANDSCAPE KEY	
	GRAVEL PATHS AND DRIVEWAY. BUILD UP: 150MM TOP SOIL TO EXPOSE SUB SOIL. LAY GEOTEXTILE MEMBRANE OVER SUB SOIL WITH 100MM DOT TYPE 3 AGGREGATE COMPACTED WITH 50MM OF 20MM SHINGLE OVER TO FINISH.
	PERMEABLE RESIN BOUND PEA SHINGLE. BUILD UP: 200MM TOP SOIL TO EXPOSE SUB SOIL. LAY GEOTEXTILE MEMBRANE OVER SUB SOIL WITH 150MM DOT TYPE 3 WITH 50MM TERRABOUND BASE OVER. COMPACTED WITH 16MM OF 10MM AGGREGATE RESIN BOUND OVER.
	GRASS LAWN - LAWNS SEEDED IN EARLY SPRING.



ALSTON ARCHITECTS		DRAWING: EXISTING SITE PLAN		DWG. NO.		ISSUE STATUS: PLANNING		CHECKED	
RIBA		PROJECT: LIME KILN FARM, NR10 5HP		DATE: 13/08/2019		REV: 1910		DATE	
WWW.ALSTONARCHITECTS.CO.UK		SCALE: 1/100		PAPER SIZE: A1		REV: DC.01			
Alby Crafts		DO NOT SCALE FROM THIS DRAWING		All information on this drawing is the sole copyright of Andrew Alston Architecture and is not to be reproduced without their permission in writing.					
NORFOLK NR11 7QE		CHECK ALL FIGURED DIMENSIONS ON SITE							
T E L / 07534964120		IF IN DOUBT CONSULT ARCHITECT							
E-mail / andrew.alston@live.co.uk		IF A DIMENSION IS MISSING FROM THIS DWG CONTACT ARCHITECT							